

PROJECT SPECIAL NOTES

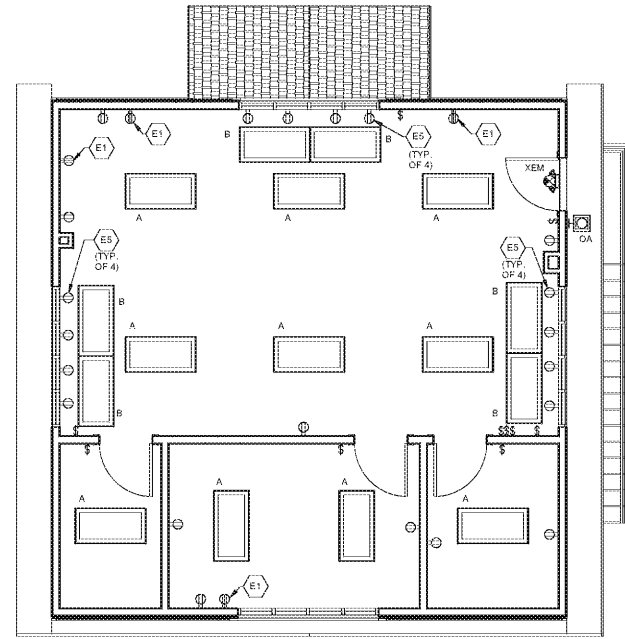
- CONTRACTOR SHALL INCLUDE IN PRICE THE FOLLOWING ADDITIONAL EQUIPMENT AND LABOR FOR ANY LOCATIONS NOT INDICATED ON THE DRAWINGS:
 - RECEPTACLES AND COVERPLATES
 - SWITCHES, SINGLE-POLE AND COVERPLATES.

BUILDING A GENERAL NOTES

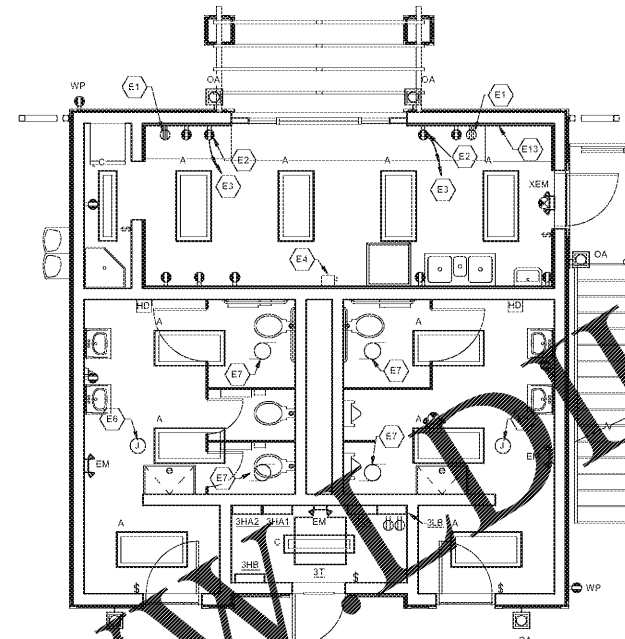
- UNLESS NOTED OTHERWISE, PROVIDE NEW ELECTRICAL LIGHTING FIXTURES, LIGHT SWITCHES, RECEPTACLES, COVERPLATES, HAND DRYERS, ETC. AT EXISTING LOCATIONS.

ELECTRICAL PLAN KEYNOTES

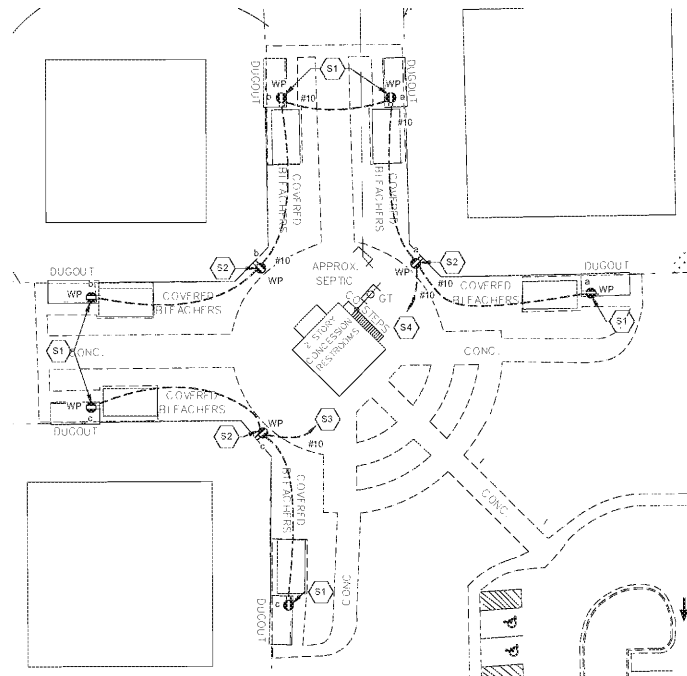
VALUE	NOTE
E1	RECEPTACLE FOR PTAC UNIT (HVAC). VERIFY EXACT CONFIGURATION.
E2	NEW DOUBLE DUPLEX GFI RECEPTACLE. CIRCUIT AS INDICATED EACH DUPLEX RECEPTACLE TO SEPARATE CIRCUIT.
E3	CIRCUIT TO (2) 20A/1P CIRCUIT BREAKER IN PANELBOARD 3LA OR 3LB. PROVIDE NEW CIRCUIT BREAKERS.
E4	CONNECTION FOR WATER HEATER. DISCONNECT EXISTING WATER HEATER AND RECONNECT NEW WATER HEATER.
E5	RECEPTACLE MOUNTED IN WIREWAY.
E6	DISCONNECT EXISTING CEILING HEATER AND RECONNECT NEW CEILING HEATER.
E7	DISCONNECT EXISTING EXHAUST FAN AND RECONNECT NEW EXHAUST FAN. RE-CIRCUIT IF NECESSARY SO FAN IS CONTROLLED WITH LIGHTING FIXTURES IN THE ROOM.
E13	DISCONNECT EXISTING HOOD. DEMO BRANCH CIRCUIT.
S1	MOUNT RECEPTACLE AT TOP OF WALL OF DUCT NEAR CEILING FOR FAN.
S2	CIRCUIT TO 20A/1P CIRCUIT BREAKER IN PANELBOARD 3LA OR 3LB. PROVIDE NEW CIRCUIT BREAKERS.
S3	CIRCUIT TO 20A/1P CIRCUIT BREAKER IN PANELBOARD 3LA OR 3LB. PROVIDE NEW CIRCUIT BREAKERS.
S4	CIRCUIT TO (2) 20A/1P CIRCUIT BREAKER IN PANELBOARD 3LA OR 3LB. PROVIDE NEW CIRCUIT BREAKERS.



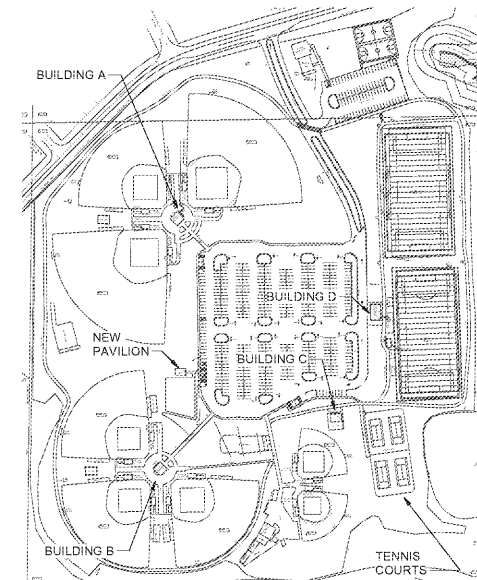
BUILDING A 2ND FLOOR
1/4" = 1'-0"



BUILDING A 1ST FLOOR
1/4" = 1'-0"



ELECTRICAL SITE PLAN
1" = 30'-0"



KEY PLAN

Order Plans @ www.WDOLine.com

ROBERTSON LOIA ROOF
ARCHITECTS & ENGINEERS
4440 Preston Ridge Road - Suite 275 - Alpharetta, GA 30015
770-474-2600 / www.rlrpc.com
GA CO# 96000692 EXP# 96000692



Sawnee Mountain Park Renovations
3995 WATSON ROAD
CUMMING, GA 30028
FOR: Forsyth Co. Parks & Rec. Dept.
P.O. BOX 2417
CUMMING, GA 30028

REVISIONS

NO.	DATE	DESCRIPTION

SHEET TITLE
ELECTRICAL PLANS - BUILDING A

DATE
08/04/2020

PROJECT NUMBER
19323

SHEET NUMBER
E1.1