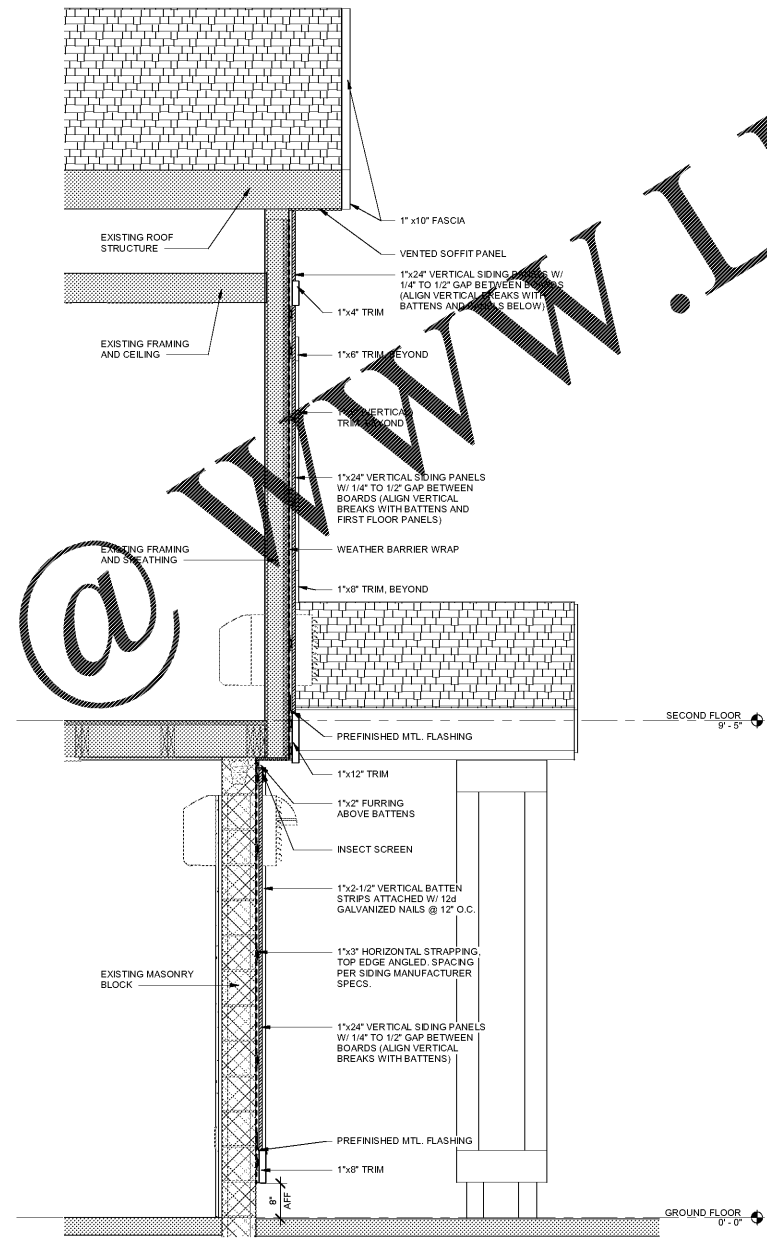
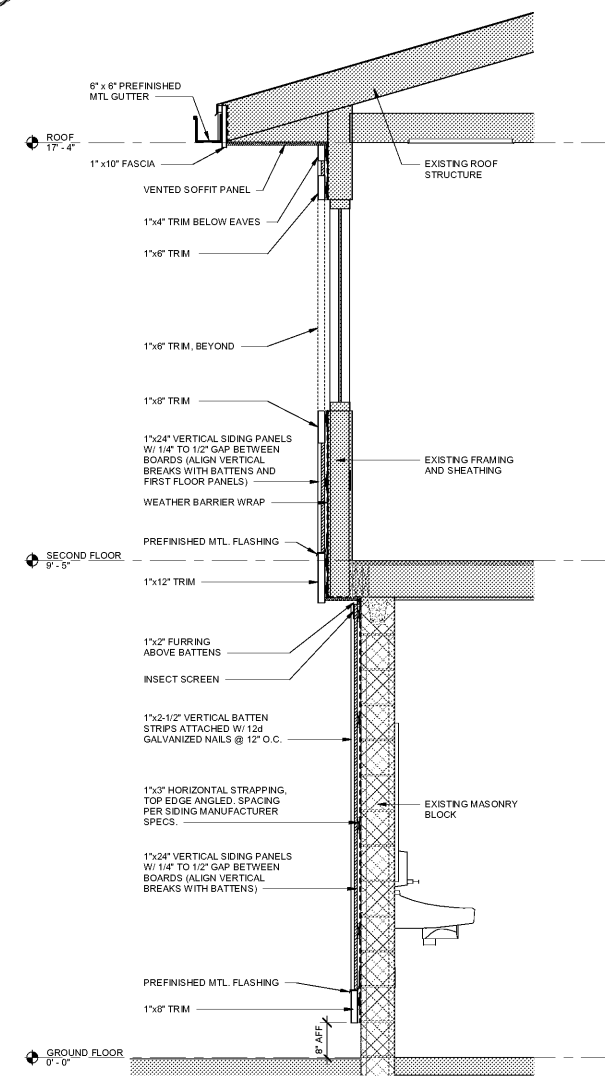


3 KNEE WALL SECTION
 A3.1 3/4" = 1'-0"
 (AT BASEBALL FIELDS)



2 WALL SECTION
 A3.1 3/4" = 1'-0"



1 WALL SECTION
 A3.1 3/4" = 1'-0"

www.LDILine.com

FIELD SIDE

T.O. FENCE
 10'-4" +/- A.F.G.

BACKSTOP POLE,
 BEYOND

NETTING

3/8" CONTINUOUS JOINT
 FILLER BETWEEN BACKSTOP
 POLE AND PVC SLEEVE

8" CMU BOND BEAM W/
 #5 HORIZ.

T.O. WALL
 2'-4" A.F.G.

GROUT CELLS SOLID

3" H. X 8" W.
 SCUPPERS @ 4' O.C.
 FOR FIELD DRAINAGE

FINISH GROUT
 0'-0"

CONCRETE FOUNDATION

#5 @ 14" O.C.

BLACK VINYL COATED CHAIN LINK
 FENCE, (TO WITHSTAND 200 LBS.
 CONCENTRATED LOAD AT ANY
 POINT AND IN ANY DIRECTION,
 ALONG THE TOP AND 50 PLF LO.
 APPLIED HORIZONTALLY). GROUT
 FENCE POSTS SOLID CONCRETE.

3/4" EXPANSION JOINT W/
 COMPRESSIBLE JOINT FILLER AND
 SEALANT AROUND FENCE POSTS

BRICK ROWLOCK

CONTINUOUS CAP FLASHING

PVC SLEEVE FOR BACKSTOP POLE
 3" DIA. FROM TOP OF BRICK CAP TO
 1" DIA. FOOTING

4" POLYURETHANE ON 8" CMU WITH
 MASONRY BRICK TIES AT 16" VERT.
 AND 24" HORIZ.

EXPANSION JOINT MATERIAL

CONCRETE SIDEWALK, SEE CIVIL

#5 DOWEL X3'-10" X0.62" AT CMU
 VERTICAL REINFORCING

(3) #4 CONTINUOUS

BACKSTOP POLE AND
 FOUNDATION, BEYOND

NOTE: COORDINATE WITH CIVIL DRAWINGS
 FOR KNEE WALL LOCATIONS AND EXTENTS

NO.	REVISIONS

SHEET TITLE
WALL SECTIONS AND DETAILS

DATE
 08/04/2020

PROJECT NUMBER
 19323

SHEET NUMBER
A3.1