

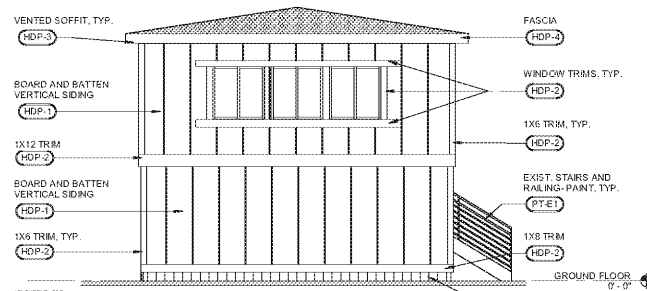
**EXTERIOR FINISH LEGEND**

**GENERAL NOTES**

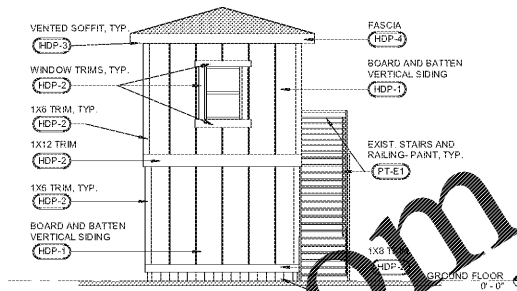
- A. CONTRACTOR TO FIELD COORDINATE ALL SIGNS TO BE REMOVED AND RELOCATED AND CORRESPONDING REINSTALLATION LOCATIONS WITH OWNER.
- B. THESE DRAWINGS ARE FOR BID PURPOSES ONLY AND SERVE TO REPRESENT THE LEVEL OF FINISHING EXTENTS. PRIOR TO THE PURCHASE AND INSTALLATION OF FINISHES, CONTRACTOR TO ACQUIRE A FINAL COLOR SCHEDULE OR APPROVAL FROM ARCHITECT.
- C. IF A FINISH TYPE IS NOT SPECIFIED, CONTRACTOR TO NOTIFY ARCHITECT OF DISCREPANCY, IN WRITING, AS SOON AS POSSIBLE.
- D. FINISH EXTENTS DEFINED ON THIS SHEET TO BE USED IN CONJUNCTION WITH A PROJECT SPECIFIC "COLOR SCHEDULE." IF A SEPARATE "COLOR SCHEDULE" IS NOT PROVIDED OR IF A FINISH COLOR IS NOT DEFINED ON THE SCHEDULE, CONTRACTOR TO SUBMIT CHOSEN MANUFACTURER'S COLOR OPTIONS TO ARCHITECT FOR COLOR SELECTION.
- E. PRIOR TO THE PURCHASE AND INSTALLATION OF FINISHES, CONTRACTOR TO COORDINATE EXTERIOR FINISH COLORS, WITH CHOSEN MANUFACTURER'S COLOR OPTIONS, WHERE DISCREPANCIES OCCUR, CONTRACTOR SHALL SUBMIT MANUFACTURER'S COLOR OPTIONS TO ARCHITECT FOR COLOR SELECTION.

**EXTERIOR FINISH SCHEDULE**

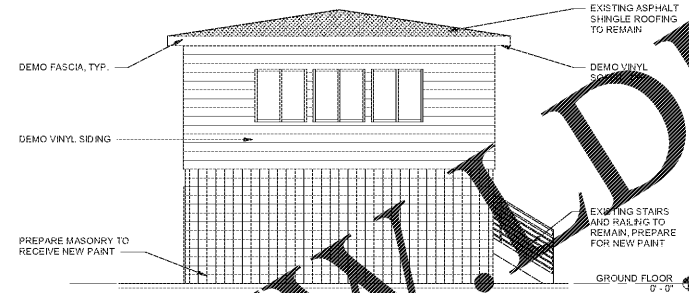
SYMBOL	MATERIAL DESCRIPTION	MATERIAL COLOR	MANUFACTURER
<b>CEMENTITIOUS SIDING AND BOARDS</b>			
(HDP-1)	BOARD AND BATTEN: HARDEPANEL VERTICAL SIDING AND HARDE TRIM BATTEN STRIPS	LIGHT MIST	JAMES HARDIE
(HDP-2)	TRIM (VARIOUS SIZES): HARDE TRIM	IRON GRAY	JAMES HARDIE
(HDP-3)	SOFFIT: HARDESOFFIT VENTED PANEL	LIGHT MIST	JAMES HARDIE
(HDP-4)	FASCIA: HARDE TRIM	IRON GRAY	JAMES HARDIE
<b>PRE-FINISHED METAL</b>			
(MTL-1)	PRE-FINISHED MTL. GUTTERS & DOWNSPOUTS		TBD
<b>PAINT</b>			
(PT-E1)	MISC. METAL PAINT: EXISTING STAIRS, RAILS, EXPOSED STEEL, ETC.	BLACK	PPG
(PT-E2)	H.M. PAINT: EXISTING H.M. DOORS, FRAMES	MATCH 'IRON GRAY' TRIM	PPG
(PT-E3)	WOOD PAINT: EXISTING COLUMNS, BEAMS, EXPOSED WOOD, ETC.	MATCH 'IRON GRAY' TRIM	PPG
(PT-E4)	MASONRY PAINT: EXISTING CMU BLOCK	MATCH 'LIGHT MIST' SIDING	PPG



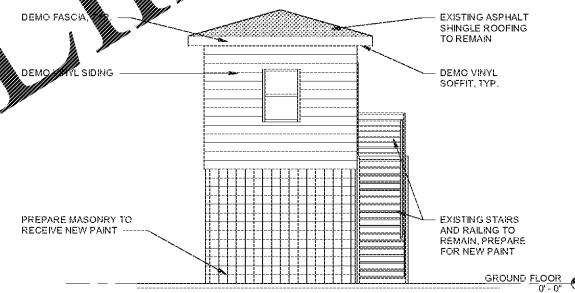
8 TOWER - SIDE ELEVATION  
A2.4 3/16" = 1'-0"



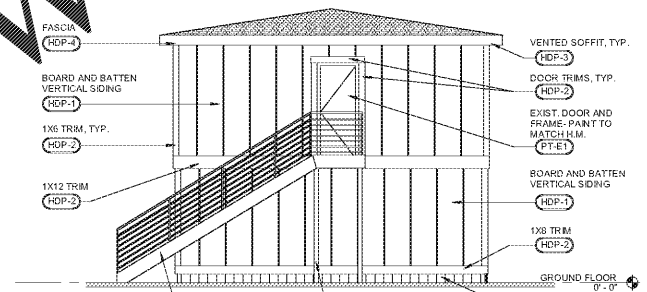
6 TOWER - REAR ELEVATION  
A2.4 3/16" = 1'-0"



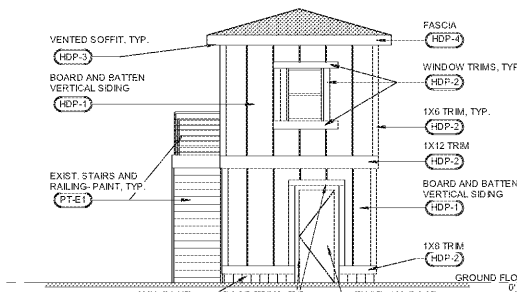
7 TOWER - SIDE ELEV DEMO  
A2.4 3/16" = 1'-0"



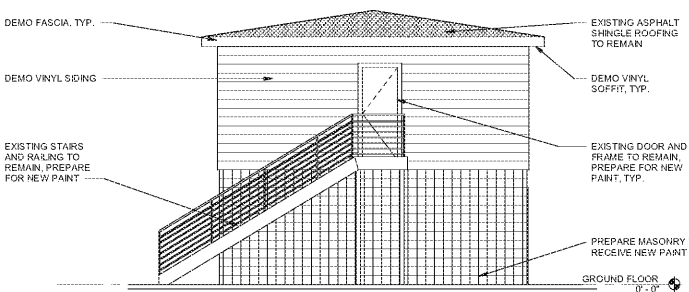
5 TOWER - REAR ELEV DEMO  
A2.4 3/16" = 1'-0"



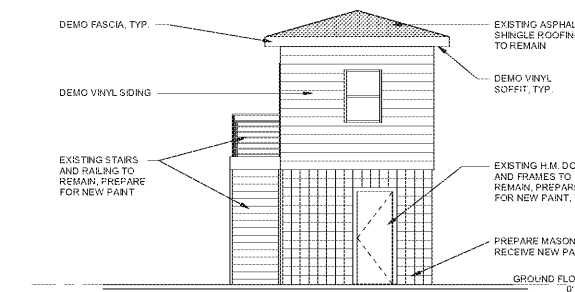
4 TOWER - SIDE ELEVATION  
A2.4 3/16" = 1'-0"



2 TOWER - FRONT ELEVATION  
A2.4 3/16" = 1'-0"



3 TOWER - SIDE ELEV DEMO  
A2.4 3/16" = 1'-0"



1 TOWER - FRONT ELEV DEMO  
A2.4 3/16" = 1'-0"

Order Plans @ [www.dilinc.com](http://www.dilinc.com)

**ROBERTSON LOIA ROOF ARCHITECTS & ENGINEERS**  
3460 Preston Ridge Road - Suite 277, Alpharetta, GA, 30015  
770-674-2600 / www.rlrpa.com  
FIRM LICENSE NUMBER: C0199



**Sawnee Mountain Park Renovations**  
3995 WATSON ROAD  
CUMMING, GA 30028  
FOR: **Forsyth Co. Parks & Rec. Dept.**  
P.O. BOX 2417  
CUMMING, GA 30028

REVISIONS


SHEET TITLE  
**DEMO AND PROPOSED ELEVATIONS - SCOREKEEPER TOWER**

DATE  
08/04/2020

PROJECT NUMBER  
19323

SHEET NUMBER  
**A2.4**