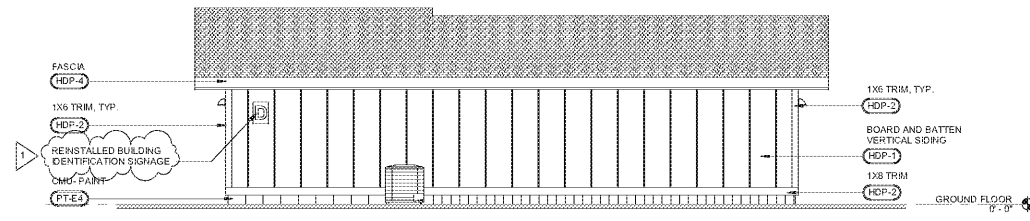


EXTERIOR FINISH LEGEND

GENERAL NOTES

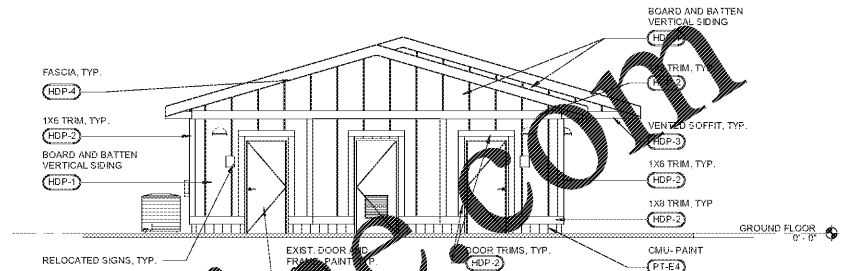
- A. CONTRACTOR TO FIELD COORDINATE ALL SIGNS TO BE REMOVED AND RELOCATED AND CORRESPONDING REINSTALLATION LOCATIONS WITH OWNER.
- B. THESE DRAWINGS ARE FOR BID PURPOSES ONLY AND SERVE TO REPRESENT THE LEVEL OF FINISHING EXTENTS. PRIOR TO THE PURCHASE AND INSTALLATION OF FINISHES, CONTRACTOR TO ACQUIRE A FINAL COLOR SCHEDULE OR APPROVAL FROM ARCHITECT.
- C. IF A FINISH TYPE IS NOT SPECIFIED, CONTRACTOR TO NOTIFY ARCHITECT OF DISCREPANCY, IN WRITING, AS SOON AS POSSIBLE.
- D. FINISH EXTENTS DEFINED ON THIS SHEET TO BE USED IN CONJUNCTION WITH A PROJECT SPECIFIC "COLOR SCHEDULE." IF A SEPARATE "COLOR SCHEDULE" IS NOT PROVIDED OR IF A FINISH COLOR IS NOT DEFINED ON THE SCHEDULE, CONTRACTOR TO SUBMIT CHOSEN MANUFACTURER'S COLOR OPTIONS TO ARCHITECT FOR COLOR SELECTION.
- E. PRIOR TO THE PURCHASE AND INSTALLATION OF FINISHES, CONTRACTOR TO COORDINATE EXTERIOR FINISH COLORS WITH CHOSEN MANUFACTURER'S COLOR OPTIONS. WHERE DISCREPANCIES OCCUR, CONTRACTOR SHALL SUBMIT MANUFACTURER'S COLOR OPTIONS TO ARCHITECT FOR COLOR SELECTION.

EXTERIOR FINISH SCHEDULE			
SYMBOL	MATERIAL DESCRIPTION	MATERIAL COLOR	MANUFACTURER
CEMENTITIOUS SIDING AND BOARDS			
(HDP-1)	BOARD AND BATTEN: HARDEIPANEL VERTICAL SIDING AND HARDEITRIM BATTEN STRIPS	LIGHT MIST	JAMES HARDE
(HDP-2)	TRIM (VARIOUS SIZES): HARDEITRIM	IRON GRAY	JAMES HARDE
(HDP-3)	SOFFIT: HARDESOFFIT VENTED PANEL	LIGHT MIST	JAMES HARDE
(HDP-4)	FASCIA: HARDEITRIM	IRON GRAY	JAMES HARDE
PRE-FINISHED METAL			
(MTL-1)	PRE-FINISHED MTL. GUTTERS & DOWNSPOUTS		TBD
PAINT			
(PTE-1)	MISC. METAL PAINT: EXISTING STAIRS, RAILS, EXPOSED STEEL, ETC.	BLACK	PPG
(PTE-2)	H.M. PAINT: EXISTING H.M. DOORS, FRAMES	MATCH 'IRON GRAY' TRIM	PPG
(PTE-3)	WOOD PAINT: EXISTING COLUMNS, BEAMS, EXPOSED WOOD, ETC.	MATCH 'IRON GRAY' TRIM	PPG
(PTE-4)	MASONRY PAINT: EXISTING CMU BLOCK	MATCH 'LIGHT MIST' SIDING	PPG



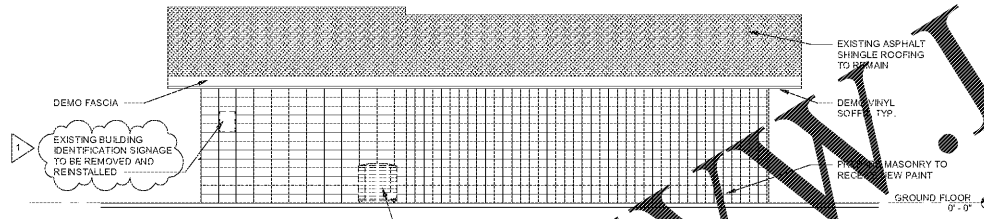
8 BLDG D - SIDE ELEVATION

A2.3 3/16" = 1'-0"



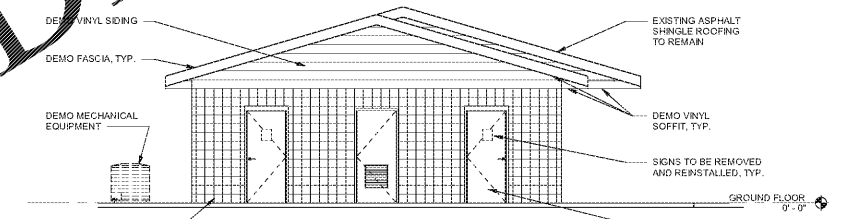
6 BLDG D - REAR ELEVATION

A2.3 3/16" = 1'-0"



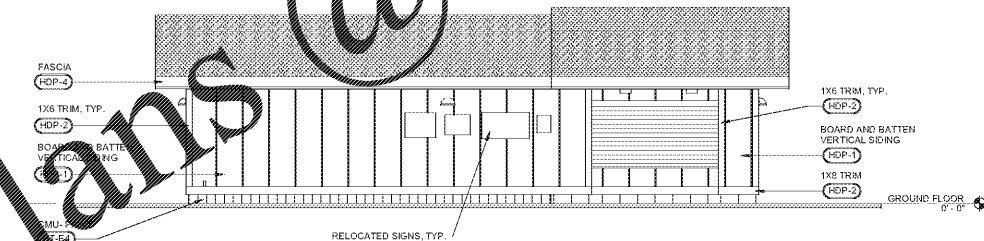
7 BLDG D - SIDE ELEV DEMO

A2.3 3/16" = 1'-0"



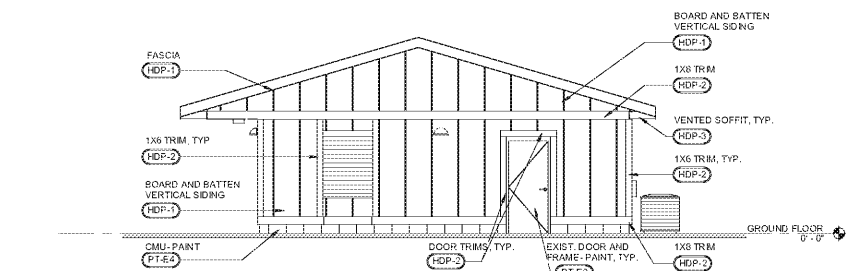
5 BLDG D - REAR ELEV DEMO

A2.3 3/16" = 1'-0"



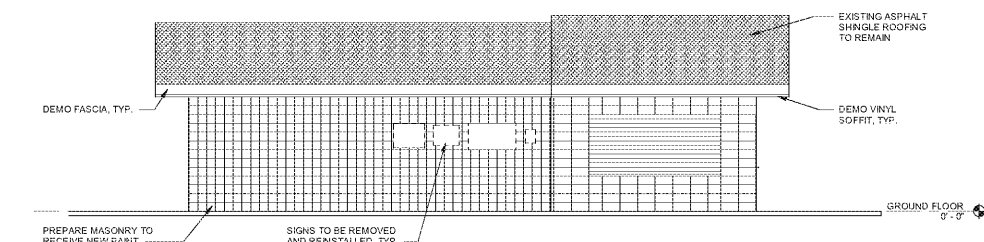
4 BLDG D - SIDE ELEVATION

A2.3 3/16" = 1'-0"



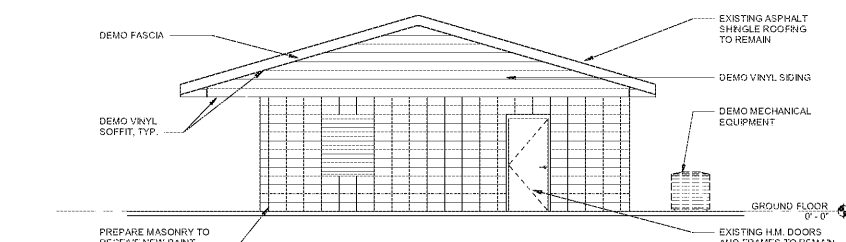
2 BLDG D - FRONT ELEVATION

A2.3 3/16" = 1'-0"



3 BLDG D - SIDE ELEV DEMO

A2.3 3/16" = 1'-0"



1 BLDG D - FRONT ELEV DEMO

A2.3 3/16" = 1'-0"

Order Plans @ WWW.LDILINE.COM