

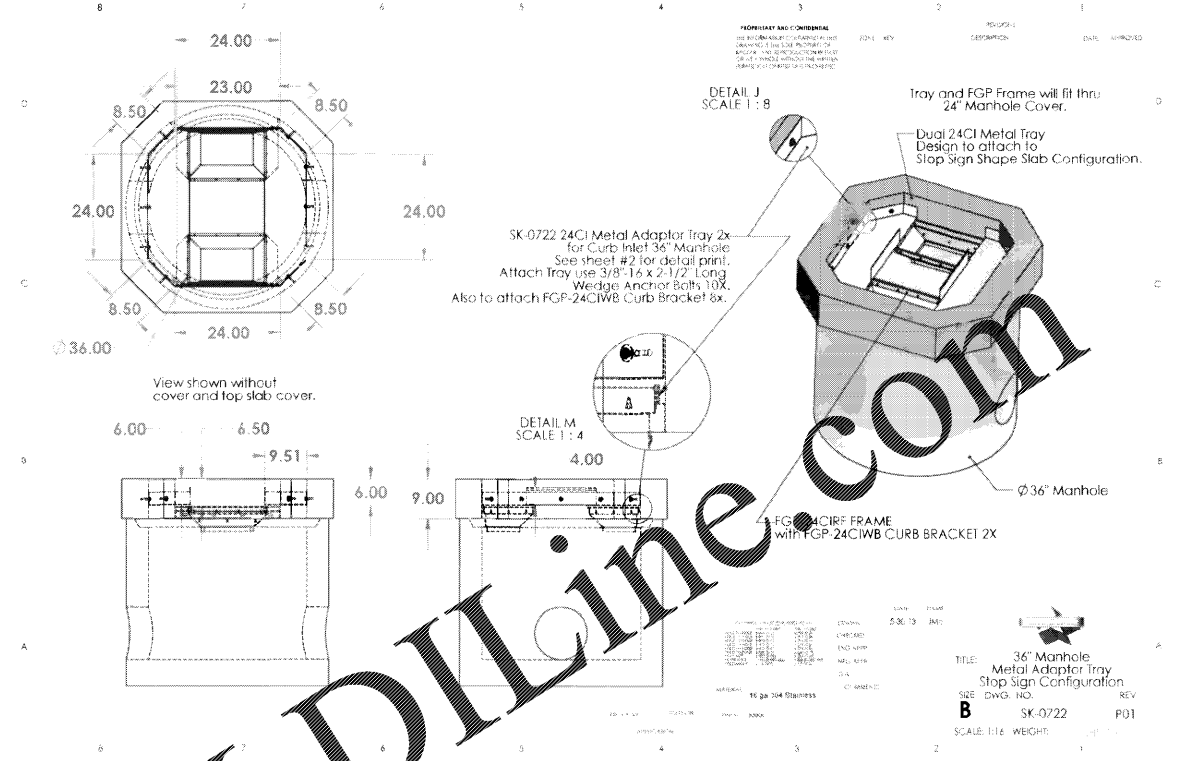
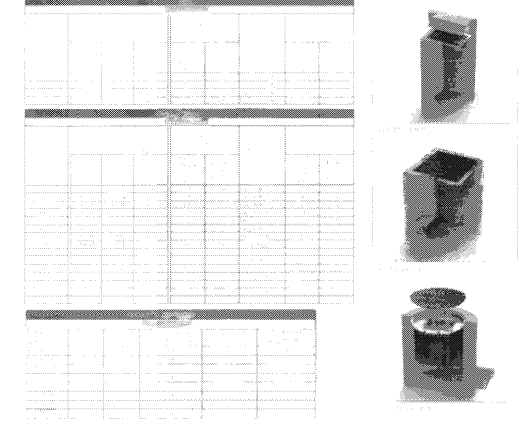
Water Quality Calculations For Existing Double Wing Catch Basin

CN ₂	1000(10+5P+10Qa+10(Qa+2+1.25QaP))	99.48	1.73
P ₂	1.2 per Georgia Storm Manual		
Q _{av}	P*P ₂	1.14	
R _{av}	0.5+0.05Q _{av}	0.95	
I _a	100.00 % impervious area	0.83	Impervious Acres
		0.83	TOTAL Acres
WQ _{av}	(P1Qa+Q1)2 + 4356Q1/2/ac	3435	c f
I _{av}	(200/CN)-2	0.01	
I _{av} P ₂		0.01	
A _{av}	Acres * 1/640 Mile ² per ac	0.001	
Q _{av}	refer to chart from SCS TR-55 2nd Edition, June 1986	1000	
		CALCULATED PROVIDED CAPACITY	
Q _{peak}	Q _{av} * A * Q _{av}	1.48 cfs	3.0 cfs
Q _{peak} (25 yr)	Water Quality Peak Rainfall 25 yr Peak Rainfall	7.53 cfs	12.2 cfs

APPROXIMATELY 0.40 ACRES OF IMPERVIOUS COVER IS BEING ADDED WITH THE IMPROVEMENTS INCLUDED HERE. THE ADDITION OF THE OLDCASTLE WATER QUALITY UNIT WILL INTERCEPT AND PROVIDE 90% TSS REMOVAL FOR A LARGER AREA THAT CURRENTLY BYPASSES THE EXISTING STORMWATER POND (HAS NO EXISTING WATER QUALITY TREATMENT).

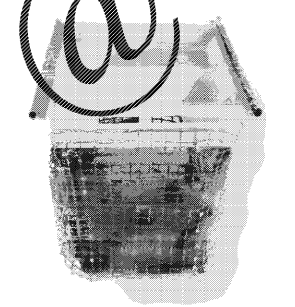
FLOGARD®
Catch Basin Insert Filter

Catch basin insert designed to capture sediment, grass seeds, trash and petroleum hydrocarbons from flow. 18" H x 18" W. Flow mesh design for the most extreme weather conditions.



FLOGARD+PLUS®
CATCH BASIN INSERT FILTER

Inspection and Maintenance Guide



SCOPE:

Federal, State and Local Clean Water Act regulations and most insurance carriers require that stormwater filtration systems be maintained and serviced on a regular basis. The intent of the regulations is to ensure that the systems are able to efficiently remove pollutants from stormwater runoff thereby preventing pollution of the receiving water resources. These specifications apply to the FLOGARD+PLUS® Catch Basin Insert Filter.

RECOMMENDED FREQUENCY OF SERVICE:

Oldcastle Protection Services (DPS) recommends that installed FLOGARD+PLUS Catch Basin Insert Filters be serviced on a regular basis. Ultimately, the frequency depends on the amount of runoff, pollutant loading and interference (e.g., vegetation, cars, pipes, etc.); however, it is recommended that each installation be serviced a minimum of three times per year, with a change of filter medium once per year. DPS technicians are available to do an on site evaluation, upon request.

RECOMMENDED TIMING OF SERVICE:

- DPS guidelines for the timing of service are as follows:
- For areas with a definite rainy season: Prior to, during and following the rainy season.
 - For areas subject to year-round rainfall: On a recurring basis (at least three times per year).
 - For areas with winter snow and summer rain: Prior to and just after the snow season and during the summer rain season.
 - For installed devices not subject to the elements (wash racks, parking garages, etc.): On a recurring basis (no less than three times per year).

SERVICE PROCEDURES:

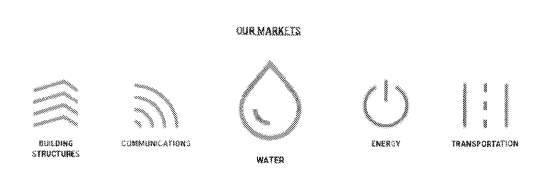
- The catch basin grate shall be removed and set to one side. The catch basin shall be visually inspected for defects and possible illegal dumping. If illegal dumping has occurred, the proper authorities and property owner representative shall be notified as soon as practicable.
- Using an industrial vacuum, the collected materials shall be removed from the liner. (Note: DPS uses a truck-mounted vacuum for servicing FLOGARD+PLUS catch basin inserts).
- When all of the collected materials have been removed, the filter medium pouches shall be removed by unsnapping the tether from the D-ring and set to one side. The filter liner, gaskets, stainless steel frame and mounting brackets, etc. shall be inspected for continued serviceability. Minor damage or defects found shall be corrected on the spot and a notation made on the Maintenance Record. Major excessive deteriorations that affect the efficiency of the filter (form liner, etc.) if approved by the customer representative, will be corrected and an invoice submitted to the representative along with the Maintenance Record.
- The filter medium pouches shall be inspected for defects and continued serviceability and replaced as necessary, and the pouch tethers reattached to the liner's D-ring.
- The grate shall be replaced.

REPLACEMENT AND DISPOSAL OF EXPOSED FILTER MEDIUM AND COLLECTED DEBRIS

The frequency of filter medium exchange will be in accordance with the existing DPS Customer Maintenance Contract. DPS recommends that the medium be changed at least once per year. During the appropriate service, or if as determined by the service technician during a non-scheduled service, the filter medium will be replaced with new material. Once the exposed pouches and debris have been removed, DPS has possession and must dispose of it in accordance with local, state and federal agency requirements.

DPS also has the capability of servicing all manner of storm drain filters, catch basin inserts and catch basins without inserts, underground oil/water separators, stormwater interceptors and other such devices. All DPS personnel are highly qualified technicians and are confined-space trained and certified. Call us at (888) 950-8826 for further information and assistance.

FLOGARD+PLUS®
CATCH BASIN INSERT FILTER



ROBERTSON LOJA ROOF ARCHITECTS & ENGINEERS
3460 Preston Ridge Road - Suite 275 - Alpharetta, GA 30005
770.671.2600 | www.rlrc.com



SAWNEE MOUNTAIN PARK IMPROVEMENTS
3995 WATSON ROAD, CUMMING, GEORGIA 30028

FOR:
FORSYTH COUNTY PARKS & RECREATION
P.O. BOX 2417, CUMMING, GEORGIA 30028

REVISIONS

WATER QUALITY SHEET

09/09/2020

PROJECT NUMBER: 19323

SHEET NUMBER: C - 6.7

Order Plans @ www.wjddline.com

Small vertical text at the bottom left corner containing project details and dates.