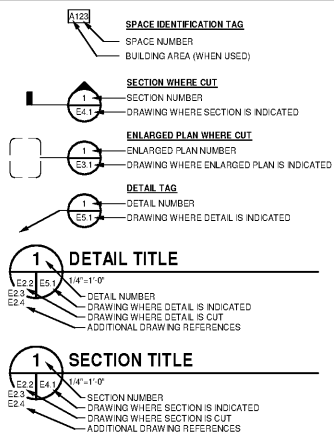
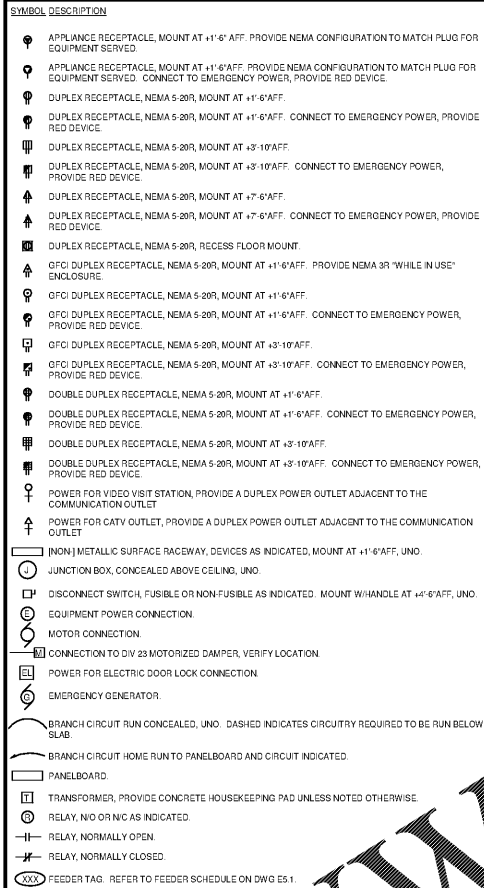


GRAPHICS SYMBOLS LEGEND



POWER LEGEND



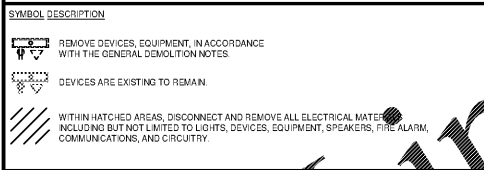
GENERAL DEMOLITION NOTES

- A. PROVIDE ALL ELECTRICAL DEMOLITION WORK REQUIRED TO INSTALL THE WORK INDICATED. REMOVE, REWIRE, AND RECONNECT ALL BRANCH CIRCUITS THAT WILL REMAIN IN USE BUT INTERFERES WITH THE WORK.

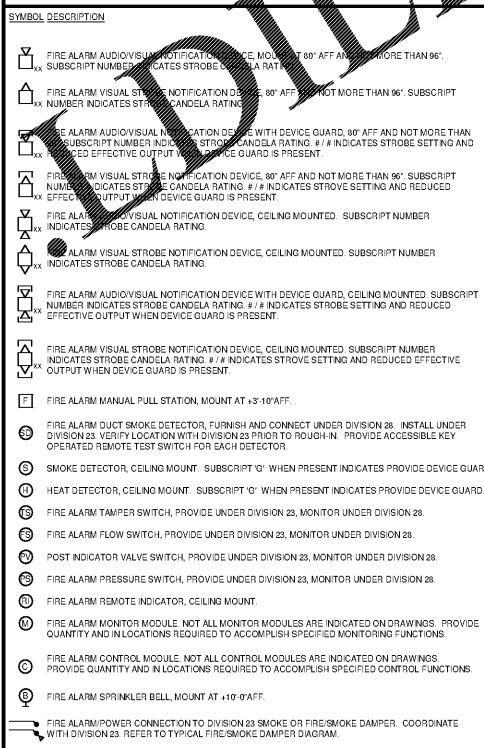
GENERAL NOTES

- A. THE CONTRACT DOCUMENTS ARE COMPLEMENTARY AND WHAT IS REQUIRED BY ONE SHALL BE AS BINDING AS IF REQUIRED BY ALL. IN THE CASE OF A CONFLICT, DISAGREEMENT, OR AMBIGUITY, PROVIDE THE BETTER QUALITY. IN THE CASE OF A CONFLICT, DISAGREEMENT, OR AMBIGUITY, PROVIDE THE GREATER QUANTITY OF WORK.

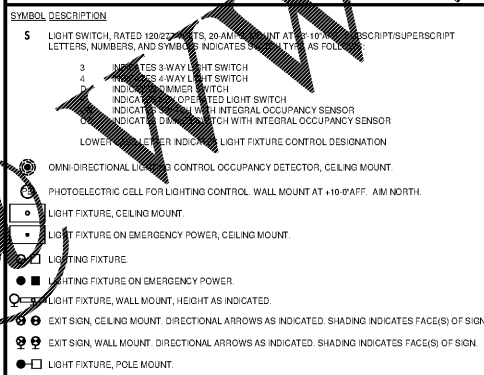
DEMOLITION LEGEND



FIRE ALARM LEGEND



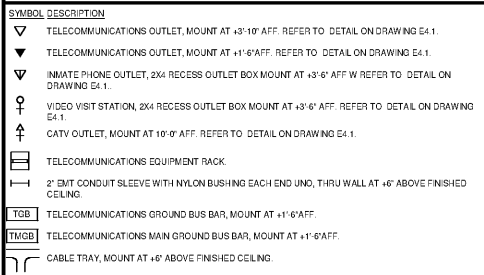
LIGHTING LEGEND



LIGHT FIXTURE SCHEDULE

Table with columns: TYPE, DESCRIPTION, MANUFACTURER, FIXTURE, SERIES NO., VOLTAGE, WATT, LUMENS, LAMP, COLOR TEMP., MOUNTING, OPTIONS, COMMENTS. Lists various lighting fixtures like 2x4 Vandal Resist Lenses, Downlight, and Security lights.

COMMUNICATIONS LEGEND



ABBREVIATIONS

Table of abbreviations for electrical and construction terms, including A (Above), B (Below), CATV (Community Antenna Television), and others.

MOSELEY ARCHITECTS



MARION COUNTY LEC

591492 MARION COUNTY 2715 EAST HWY 76, MULLINS, SC 29574

Table with columns: PROJECT NO., DATE, REVISIONS, DATE, DESCRIPTION. Shows project number 591492 and date October 30, 2020.

LEGENDS, ABBREVIATIONS AND GENERAL NOTES

E0.1