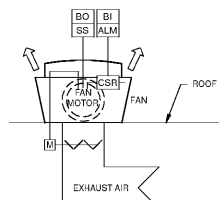
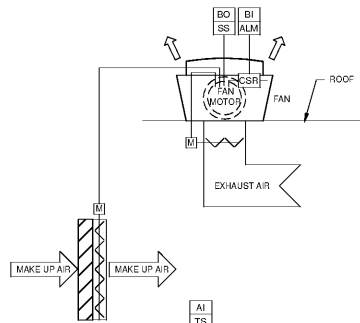


**IN LINE EXHAUST FAN**  
NO SCALE

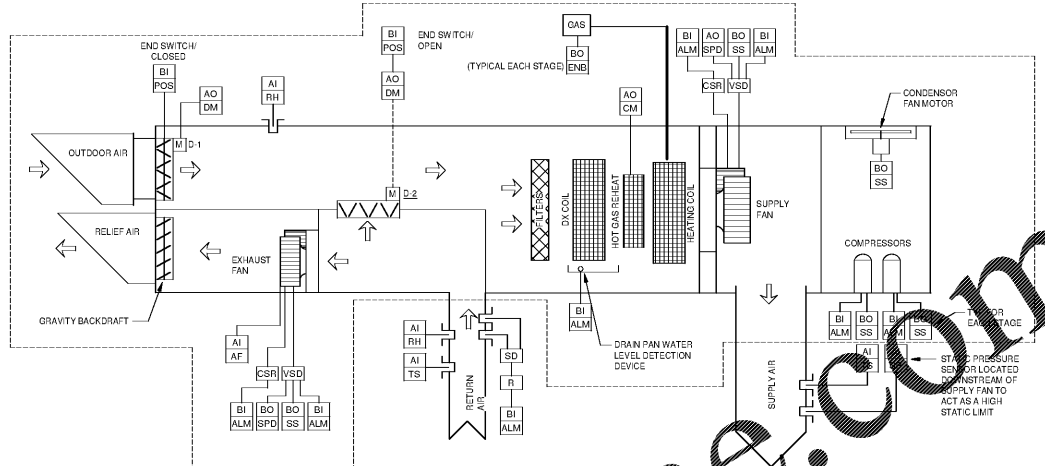


NOTE: ROOFTOP EXHAUST FAN IS SHOWN, SIDEWALL IS SIMILAR.

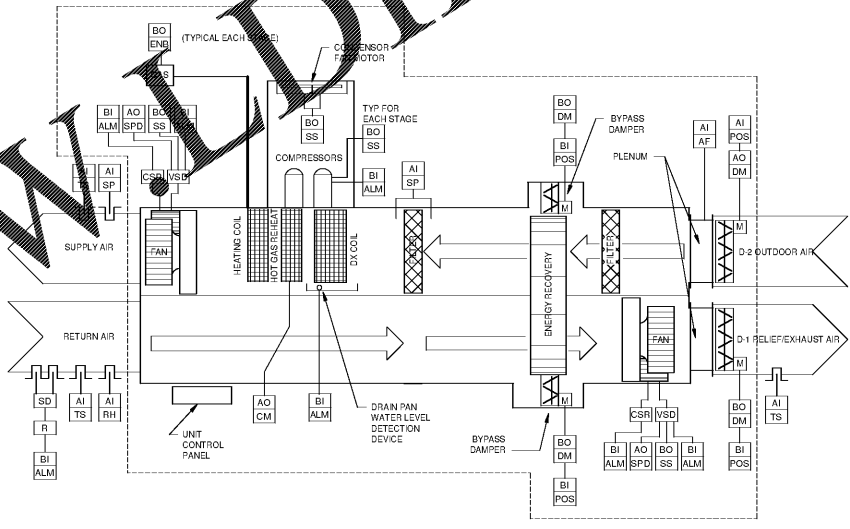
**ROOF TOP EXHAUST FAN**  
NO SCALE



**ROOF TOP EXHAUST FAN FOR EQUIPMENT ROOM**  
NO SCALE



**PACKAGED SINGLE ZONE VAV ROOFTOP UNIT**  
NO SCALE



**AIR HANDLING UNIT WITH ENERGY RECOVERY**  
NO SCALE

NOTES: COORDINATE WITH EQUIPMENT SUPPLIER TO DETERMINE WHICH CONTROLS WILL BE FACTORY INSTALLED AND WHICH WILL BE FIELD INSTALLED. ITEMS WITHIN THE DASHED REGION ARE ANTICIPATED TO BE FACTORY INSTALLED, OUTSIDE DASHED REGION FIELD INSTALLED.

PROVIDE EACH UNIT WITH A MANUAL EMERGENCY CONTROL TO STOP THE SUPPLY AND RETURN AIR IN AN EMERGENCY. CONTROL DEVICE TO BE LOCATED IN AN ENCLOSURE ADJACENT TO THE SMOKE CONTROL PANEL.

NOTES: COORDINATE WITH EQUIPMENT SUPPLIER TO DETERMINE WHICH CONTROLS WILL BE FACTORY INSTALLED AND WHICH WILL BE FIELD INSTALLED. ITEMS WITHIN THE DASHED REGION ARE ANTICIPATED TO BE FACTORY INSTALLED, OUTSIDE DASHED REGION FIELD INSTALLED.

PROVIDE EACH UNIT WITH A MANUAL EMERGENCY CONTROL TO STOP THE SUPPLY AND RETURN AIR IN AN EMERGENCY. CONTROL DEVICE TO BE LOCATED IN AN ENCLOSURE ADJACENT TO THE SMOKE CONTROL PANEL.

Order Plans @ [www.dilling.com](http://www.dilling.com)

MOSELEY ARCHITECTS



MARION COUNTY LEC

591492  
MARION COUNTY  
2715 EAST HWY 76, MULLINS, SC 29574

PROJECT NO:	591492
DATE:	OCTOBER 30, 2020
REVISIONS:	
DATE:	DESCRIPTION:

CONTROLS

M7.1