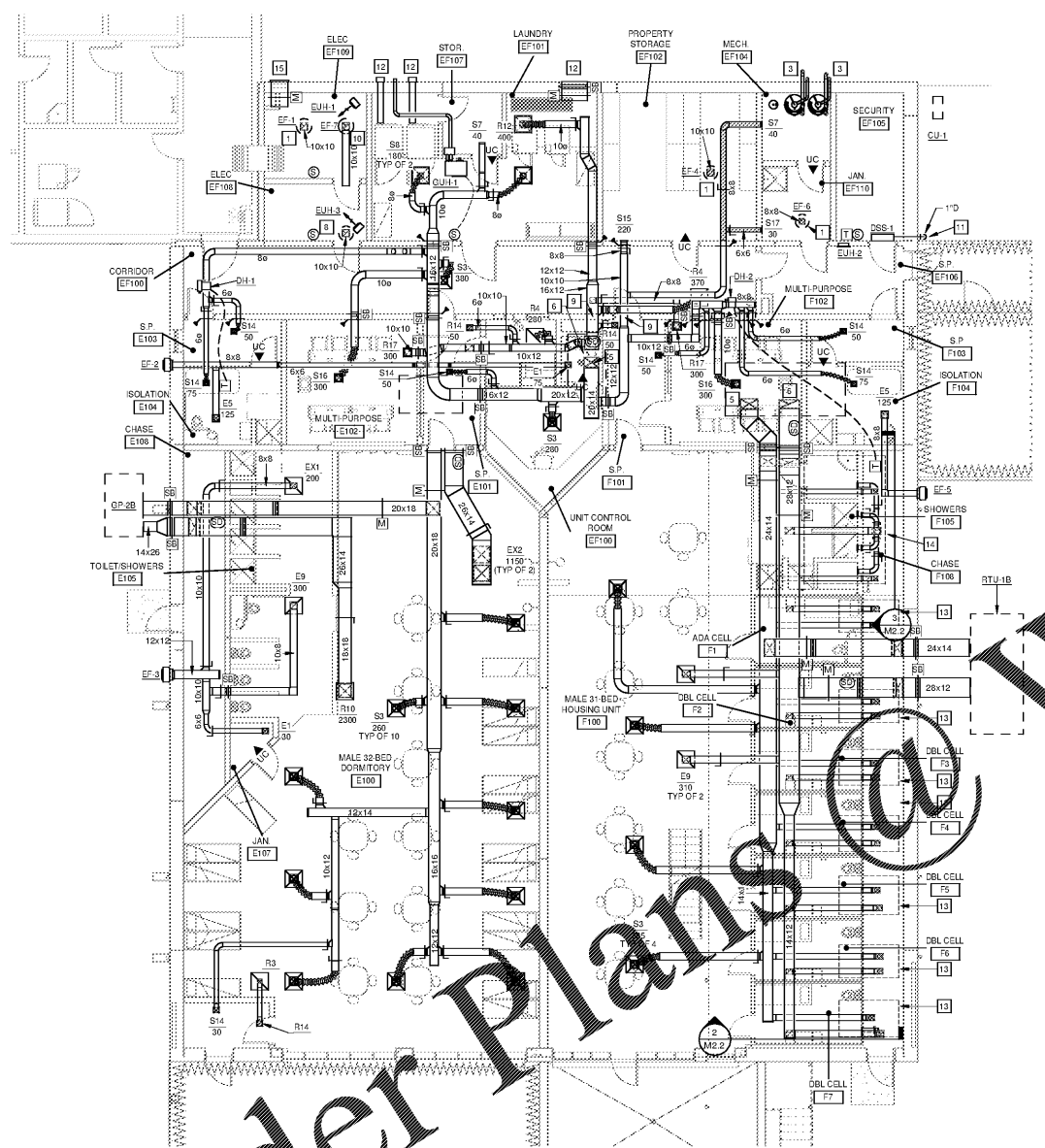
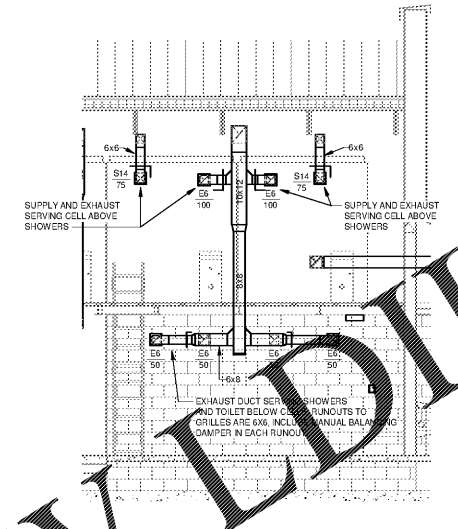


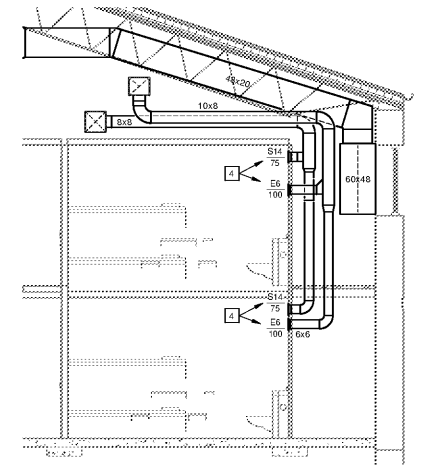
10/29/2020 3:59:40 PM



FIRST FLOOR PLAN - DUCTWORK - NEW CONSTRUCTION
1/8" = 1'-0"

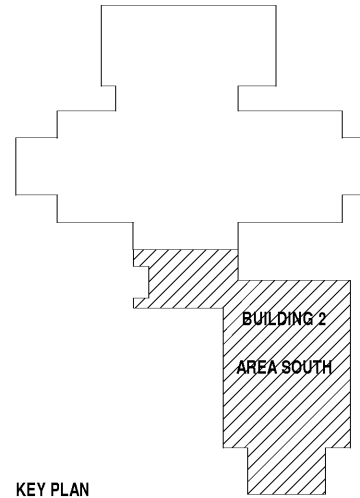


3 DUCT AT SHOWER DETAIL (TOILET & SHOWER)
ME.2/ME.2 1/4"



2 TYPICAL STACKED CELL
ME.2/ME.2 1/4" = 1'-0"

ADDITION KEYNOTES	
APPLIES TO THIS DRAWING REPRESENTED BY [A]	
1.	EXTEND EXHAUST DUCT FROM EXHAUST FAN TO BELOW ROOF DECK. PROVIDE WELDED WIRE MESH FOR EXHAUST DUCT IN ACCORDANCE WITH OPEN END DUCT DETAIL.
2.	EXTEND EXHAUST DUCT FROM GRILLE TO EXHAUST FAN. PROVIDE DUCT TRANSITIONS.
3.	PROVIDE AIR INTAKES AND FLUE VENTS FOR DOMESTIC WATER HEATERS. MAINTAIN SPACING REQUIREMENTS AND VENT SIZES IN ACCORDANCE WITH MANUFACTURERS GUIDELINES.
4.	COORDINATE WITH CELL MANUFACTURER, GRILLES MAY BE PROVIDED AS A STAMPED GRATE INTEGRAL WITH THE CELL BY MANUFACTURER.
5.	SUPPLY DUCT RISER UP TO RTU. PROVIDE TRANSITIONS.
6.	RETURN EXHAUST DUCT RISER UP TO RTU. PROVIDE TRANSITIONS.
7.	NOT USED.
8.	PROVIDE ROOF MOUNTED AIR INTAKE GREENHECK MODEL 120W-2 WITH 120W-2 CURB. EXTEND 6x6 DUCT DOWN TO BELOW ROOF DECK. PROVIDE WELDED WIRE MESH (120W-2 POSITION). PROVIDE WELDED WIRE MESH FOR DUCTWORK WITH OPEN END DUCT DETAIL.
9.	PROVIDE SECURITY BARS AND MOTOR DAMPER AT WALL PENETRATION.
10.	EXTEND EXHAUST DUCT FROM EXHAUST FAN TO ELECTRICAL ROOM. PROVIDE WELDED WIRE MESH FOR EXHAUST DUCT IN ACCORDANCE WITH OPEN END DUCT DETAIL.
11.	EXTEND REFRIGERANT LINE AND SUCION LINES TO THE ASSOCIATED CONDENSING UNIT. EXTEND CONDENSATE LINE TO MOTOR DAMPER SPLIT UNIT TO EXTERIOR & PROVIDE SPLIT UNIT.
12.	PROVIDE 8" CLOTHES DRYER VENT AND WALL CAP. INSTALL VENT APPROXIMATELY 3" AFF. WALL CAP FMCO MODEL DWVP OR EQUIVALENT PER SPECIFICATION.
13.	DRYER LOUVER MUST BE 3.0 SF FREE AREA (36x36) FOR DRYER MAKEUP AIR. PROVIDE 120W-2 MOTORIZED DAMPER WITH DRYER OPERATION. PROVIDE CELL SECURITY BARS IN WALL OPENING.
14.	REFER TO ENLARGED PLAN SECTION OF TYPICAL STACKED CELL DUCT DETAIL. APPLIES TO EACH SHOWER AREA BENEATH CELLS.
15.	MINIMUM LOUVER FREE AREA IS 1.0 SF. PROVIDE MOTORIZED DAMPER (120W-2 POSITION). INCLUDE TRANSFORMERS AS REQUIRED AND SECTION OF DUCTWORK ON THE BACK SIDE OF LOUVER OR A COMBINATION LOUVER DAMPER.



KEY PLAN

MOSELEY ARCHITECTS



6210 ARDREY HELL ROAD - THE HUB AT WAVERLY, SUITE 425 - CHARLOTTE, NC 28277
PHONE (704) 540-3755 FAX (704) 540-3754
MOSELEYARCHITECTS.COM

MARION COUNTY LEC

591492
MARION COUNTY
2715 EAST HWY 76, MULLINS, SC 29574

PROJECT NO:	591492
DATE:	OCTOBER 30, 2020
REVISIONS:	
DATE:	DESCRIPTION:

FIRST FLOOR
PLAN-DUCTWORK-NEW
CONSTRUCTION

M2.2