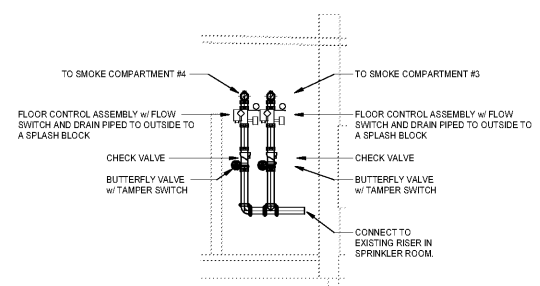


Order Plans @ WWW.LDLINE.COM

1 RISER DETAIL "A"
FP2.1.2 FP0.1 1/4" = 1'-0"



ABBREVIATIONS	
@	AT ABOVE
ABV	ABOVE
AFV	ABOVE FINISHED FLOOR
AFG	ABOVE FINISHED GRADE
AHU	AIR HANDLING UNIT
BLDG	BUILDING
CL	CENTERLINE
CLG	CEILING
COL	COLUMN
CONC	CONCRETE
CONT	CONTINUATION
CORR	CORRIDOR
CR	CLASSROOM
CU	CUBIC
CU FT	CUBIC FEET
DCW	DOMESTIC COLD WATER
DEG	DEGREE(S)
DEMO	DEMOLISH OR DEMOLITION
DIA	DIAMETER
DIP	DUCTILE IRON PIPE
DN	DOWN
DP	DRY PIPE
DS	DOWNSPOUT
DTL	DETAIL
DWG	DRAWING
E	EAST
EGH	ELECTRIC CEILING HEATER
EF	EXHAUST FAN
EH-1	EXTRA HAZARD GROUP 1
EH-2	EXTRA HAZARD GROUP 2
ELEC	ELECTRICAL
EQ	EQUAL
EQUIP	EQUIPMENT
ET	EXPANSION TANK
ETR	EXISTING TO REMAIN
EVH	ELECTRIC WATER HEATER
EX	EXISTING
EXP	EXPANSION
F	FARENHEIT
FD	FIRE DAMPER
FDC	FIRE DEPARTMENT CONNECTION
FG	FINISHED GRADE
FH	FIRE HYDRANT
FHC	FIRE HOSE CABINET
FHS	FIRE HOSE STATION
FHVC	FIRE HOSE VALVE CABINET
FLR	FLOOR
FP	FIRE PROTECTION
FT	FOOT OR FEET
FVC	FIRE VALVE CABINET
GAL	GALLONS
GPM	GALLONS PER MINUTE
GUH	GAS-FIRED UNIT HEATER
HB	HOSE BIB
HD	HEAD
HORIZ	HORIZONTAL
HP	HORSEPOWER
HW	HOT WATER
ID	INSIDE DIAMETER
IN	INCH
INSUL	INSULATE OR INSULATION
JAN	JANITOR
KIT	KITCHEN
LAB	LABORATORY
LEV	ELEVATOR
LF	LINEAR FOOT (FEET)
LH	LIQUID HAZARD
MAT	MATERIAL
MAX	MAXIMUM
MFR	MECHANICAL MANUFACTURER
MH	MANHOLE
MIN	MINIMUM
MISC	MISCELLANEOUS
MTD	MOUNTED
N	NORTH
NA	NOT APPLICABLE/AVAILABLE
NC	NORMALLY CLOSED
NCI	NOT IN CONTRACT
NO	NORMALLY OPEN
NO. OR #	NUMBER
OC	ON CENTER
OD	OUTSIDE DIAMETER
OCFI	OWNER FURNISHED CONTRACTOR INSTALLED OFFICE
OFF	OFFICE
OH-1	ORDINARY HAZARD GROUP 1
OH-2	ORDINARY HAZARD GROUP 2
P	PUMP
PC	PRECAST
PV	POST INDICATOR VALVE
POLY	POLYETHYLENE
PREFAB	PREFABRICATED(D)
PROJ	PROJECT
PSF	POUNDS PER SQUARE FOOT
PSI	POUNDS PER SQUARE INCH
PSIG	POUNDS PER SQUARE INCH GAUGE
PVC	POLYVINYL CHLORIDE
R	RISER
REF	REFERENCE
REQ	REQUIRED
RM	ROOM
RPM	REVOLUTIONS PER MINUTE
RTU	ROOF TOP UNIT
S	SOUTH
SAN	SANITARY
SCH	SCHEDULE
SD	SMOKE DAMPER
SHT	SHEET
SIM	SIMILAR
SP	STATIC PRESSURE
SPEC	SPECIFICATION
SPR	SPRINKLER
SQ	SQUARE
STD	STANDARD
STL	STEEL
STOR	STORAGE
SW	SWITCH
T	TEMPERATURE
THK	THICKNESS
TLT	TILE
TOSL	TOP OF SLAB
TYP	TYPICAL
UG	UNDERGROUND
UH	UNIT HEATER
UI	UNLESS INDICATED
UNO	UNLESS NOTED (INDICATED) OTHERWISE
V	VOLTS
VERT	VERTICAL
W	WEST
W/	WITH
WO	WITHOUT
WH	WATER HEATER

GRAPHICS SYMBOLS LEGEND	
	VALVE
	GATE VALVE
	VALVE IN RISER
	CHECK VALVE
	SOLENOID VALVE
	FLOW SWITCH
	PRESSURE REDUCING VALVE
	DOUBLE CHECK BACKFLOW PREVENTER
	FIRE PROTECTION WET SPRINKLER PIPING
	FIRE PROTECTION DRY SPRINKLER PIPING
	FIRE EXTINGUISHING GAS PIPING
	FIRE PROTECTION DRY SPRINKLER PIPING
	UNION
	PRESSURE GAUGE WITH GAUGE COCK
	PIPE TURNED DOWN
	PIPE TURNED UP
	PIPE TEE UP
	PIPE TEE DOWN
	PIPE CAP
	PIPE DOWN DIRECTION OF ARROW AT INDICATED SLOPE
	PIPE UP DIRECTION OF ARROW AT INDICATED SLOPE
	CONCENTRIC PIPE REDUCTION
	ECCENTRIC PIPE REDUCTION
	PUMP
	FIRE DEPARTMENT CONNECTION
	PENDANT SPRINKLER HEAD
	CONCEALED PENDANT SPRINKLER HEAD
	EXTENDED COVERAGE PENDANT SPRINKLER HEAD
	CONCEALED EXTENDED COVERAGE PENDANT SPRINKLER HEAD
	PENDANT SPRINKLER HEAD WITH GUARD
	UPRIGHT SPRINKLER HEAD
	EXTENDED COVERAGE UPRIGHT SPRINKLER HEAD
	UPRIGHT SPRINKLER HEAD WITH GUARD
	SIDEWALL SPRINKLER HEAD
	EXTENDED COVERAGE SIDEWALL SPRINKLER HEAD
	CONCEALED EXTENDED COVERAGE SIDEWALL SPRINKLER HEAD
	EXTINGUISHING AGENT DISCHARGE NOZZLE
	COMBINATION AUDIBLE AND STROBE ALARM
	MANUAL PULL STATION
	ABORT SWITCH
	IONIZATION SMOKE DETECTOR
	PHOTOELECTRIC SMOKE DETECTOR
	POINT OF CONNECTION TO EXISTING
	LIMIT OF DEMOLITION
	KEYNOTE
	SPACE IDENTIFICATION TAG SPACE NUMBER BUILDING AREA (WHEN USED)
	EQUIPMENT IDENTIFICATION TAG EQUIPMENT NUMBER UNIT DESIGNATION
	STRUCTURAL GRID LINE WITH DESIGNATION
	SECTION WHERE CUT SECTION LETTER DRAWING WHERE SECTION IS INDICATED
	ENLARGED PLAN WHERE CUT ENLARGED PLAN NUMBER DRAWING WHERE ENLARGED PLAN IS INDICATED
	DETAIL TAG DETAIL NUMBER DRAWING WHERE DETAIL IS INDICATED
	DETAIL TITLE DETAIL NUMBER DRAWING WHERE DETAIL IS INDICATED ADDITIONAL DRAWING REFERENCES
	SECTION TITLE SECTION LETTER DRAWING WHERE SECTION IS INDICATED ADDITIONAL DRAWING REFERENCES

GENERAL NOTES

THE CONTRACT DOCUMENTS ARE COMPLEMENTARY AND WHAT IS REQUIRED BY ONE SHALL BE AS BINDING AS IF REQUIRED BY ALL. IN THE CASE OF A CONFLICT, DISAGREEMENT, OR AMBIGUITY, PROVIDE THE BETTER QUALITY. IN THE CASE OF A CONFLICT, DISAGREEMENT, OR AMBIGUITY, PROVIDE THE GREATER QUANTITY OF WORK.

COORDINATE THE LOCATION OF ALL SPRINKLER PIPING WITH THE WORK OF OTHER TRADES. SPRINKLER PIPING SHALL NOT BE INSTALLED WHERE ITS LOCATION INHIBITS ACCESS TO EQUIPMENT ABOVE THE CEILING, FILTER ACCESS OR INFRINGES UPON CLEARANCES DICTATED BY THE NATIONAL ELECTRIC CODE.

VERIFY DIMENSIONS AND ROUTING IN FIELD BEFORE FABRICATION OF PIPING AND FIXTURES.

THE FIRE SPRINKLER SYSTEM ACTIVATES THE SMOKE CONTROL SYSTEM. THEREFORE EACH SMOKE COMPARTMENT MUST BE A SEPERATE ZONE. REFER TO LIFE SAFETY DRAWINGS FOR SMOKE COMPARTMENT LOCATIONS.

THE ENTIRE BUILDING SHALL BE FULLY SPRINKLERED WITH A HYDRAULICALLY DESIGNED SPRINKLER SYSTEM IN ACCORDANCE WITH THE SCBC 2018 EDITION, NFPA 13 2016 EDITION AND THE LOCAL AUTHORITY HAVING JURISDICTION. CALCULATIONS SHALL BE BASED OFF OF A CURRENT FLOW TEST PERFORMED WITHIN 1 YEAR OF SUBMISSION OF THE FIRE PROTECTION DOCUMENTS. PROVIDE COMPLETE FIRE PROTECTION SPRINKLER SYSTEM INSTALLATION DRAWINGS PREPARED BY A NICET LEVEL III OR IV CERTIFIED TECHNICIAN IN WATER BASED SYSTEMS LAYOUT, PLANS AND COVER SHEETS OF HYDRAULIC CALCULATIONS SHALL BE LEGIBLY SIGNED, CERTIFIED AND DATED BY THE PREPARED.

REFER TO STRUCTURAL DRAWINGS FOR DETAILS AND MAXIMUM SPACING REQUIREMENTS REGARDING HANGER ATTACHMENTS TO STEEL BAR JOISTS.

ALL CHASES WITH WALK-IN DOORS SHALL BE SPRINKLERED. PROVIDE SPRINKLERS FOR ANY CHASES WITH AN ACCESS DOOR 6'-0" OR GREATER IN HEIGHT.

SPRINKLER PIPE SHALL NOT TRANSVERSE ELECTRICAL, IT, MDF, IDF, COMMUNICATIONS EQUIPMENT OR SECURITY ELECTRONIC ROOMS OR SIMILAR SPACES.

SPRINKLER PIPING AND HANGERS SHALL NOT BE COVERED OR CONCEALED BY ANY MEANS PRIOR TO BEING INSPECTED AND APPROVED BY THE FIRE CHIEF.

DESIGN FLOW DATA
THE FOLLOWING DATA SHALL BE USED FOR BID PURPOSES ONLY. CONFIRM DATA PRIOR TO CALCULATING PIPE SIZES:
LOCATION OF TEST: HIGHWAY 75 AND AIRPORT
STATIC PRESSURE: 65 PSI
RESIDUAL PRESSURE: 55 PSI
FLOW AT TIME OF TEST: 1190 GPM
DATE OF TEST: 2/26/2020

SPRINKLERS
SPRINKLERS INSTALLED IN ACOUSTIC CEILINGS SHALL BE CENTERED IN THE TILE PANELS. PROVIDE INTERMEDIATE TEMPERATURE SPRINKLERS WHEN INSTALLED 2'-0" OR LESS FROM AN HVAC SUPPLY DIFFUSER IN THE CEILING AS REQUIRED BY NFPA 13 TABLE 8.3.2.5(a) ITEM (1)(c) FOR HORIZONTAL DISCHARGE.
IN ALL SECURE AREAS PROVIDE INSTITUTIONAL TYPE QUICK RESPONSE SPRINKLERS WITH CHROME FINISH. THE TYCO MODEL RAVEN SPRINKLER IS THE PREFERRED BRAND ALTERNATE. REFER TO LIFE SAFETY DRAWINGS FOR EXTENTS OF SECURE AREAS.
IN SUSPENDED ACOUSTICAL OR CVFSUM CEILINGS PROVIDE CONCEALED, QUICK RESPONSE, GLASS BULB TYPE SPRINKLERS WITH COVER PLATE.
FOR HORIZONTAL SIDEWALL APPLICATIONS, PROVIDE RECESSED, QUICK RESPONSE, GLASS BULB TYPE SPRINKLERS WITH CHROME FINISH AND MATCHING ESCUTCHEON PLATES.
IN EQUIPMENT AND STORAGE ROOMS WITHOUT SUSPENDED CEILINGS PROVIDE STANDARD UPRIGHT, QUICK RESPONSE TYPE SPRINKLERS WITH BRASS FINISH.
IN AREAS EXPOSED TO FREEZING TEMPERATURES PROVIDE QUICK RESPONSE, FUSIBLE LINK TYPE DRY SPRINKLERS.

MOSELEY ARCHITECTS
1320 MAIN STREET, SUITE 300, COLUMBIA, SC 29201
PHONE (803) 724-1252
MOSELEYARCHITECTS.COM



MARION COUNTY LEC
591492
MARION COUNTY
2715 EAST HWY 76, MULLINS, SC 29574

PROJECT NO:	591492
DATE:	OCTOBER 30, 2020
REVISIONS:	
DATE:	
DESCRIPTION:	

LEGENDS, ABBREVIATIONS AND GENERAL NOTES

FP0.1