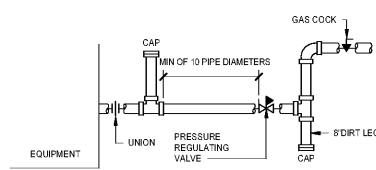
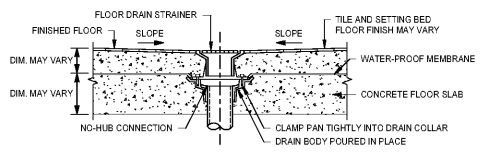


NOTES:
 1. REFER TO GAS CONNECTION AND GAS PIPE CONNECTION DETAILS AND MANUFACTURER'S RECOMMENDATIONS FOR FINAL GAS CONNECTIONS, PRESSURE REQUIREMENTS, AND FLOW REQUIREMENTS.
 2. WHERE WATER HEATERS ARE MANIFOLDED TOGETHER IN PARALLEL, REFER TO MANUFACTURER'S RECOMMENDED INSTALLATION PIPING ARRANGEMENTS AND PROVIDE EQUAL LEG PIPING FOR INLET AND OUTLET MANIFOLD PIPING OR ALTERNATIVE APPROVED METHOD FOR BALANCING FLOW AND PRESSURE TO AND FROM EACH HEATER.

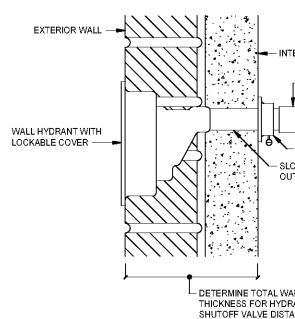
C DOMESTIC WATER HEATER DETAIL
 12" = 1'-0"



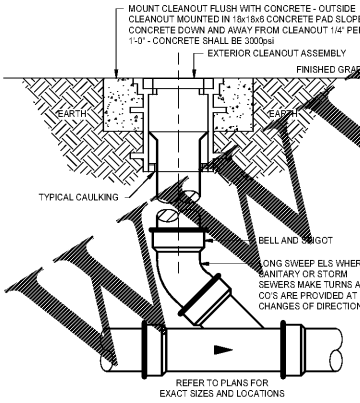
GAS CONNECTION DETAIL
 NO SCALE



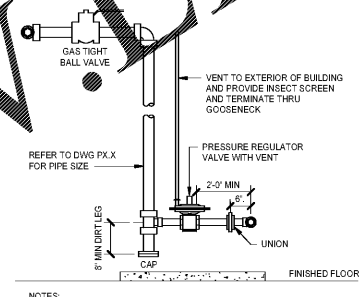
FLOOR DRAIN IN OPEN AREA DETAIL
 NO SCALE



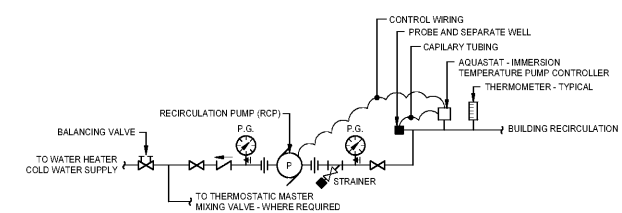
EXTERIOR WALL HYDRANT DETAIL
 NO SCALE



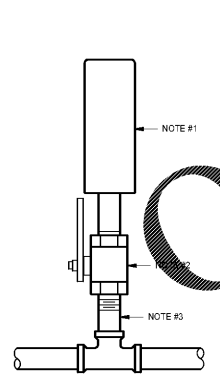
EXTERIOR YARD CLEANOUT DETAIL
 NO SCALE



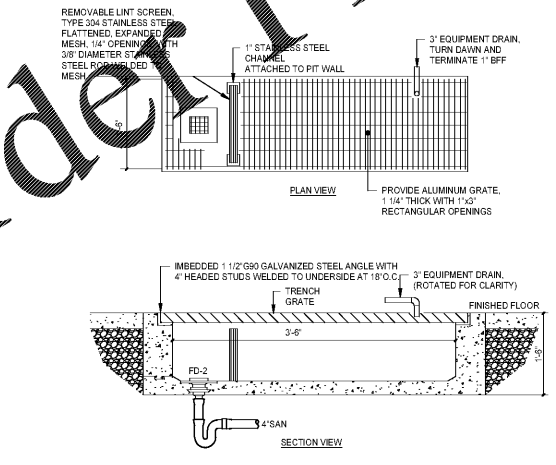
GAS PIPE CONNECTION DETAIL
 NO SCALE



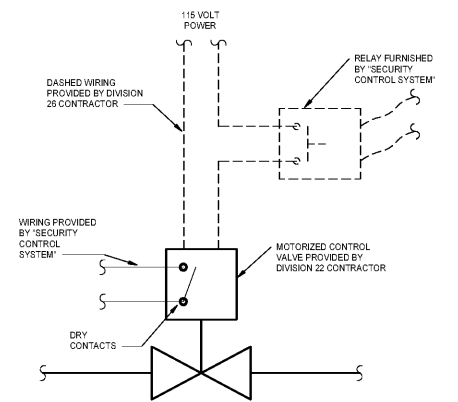
CIRCULATION PUMP DETAIL
 NO SCALE



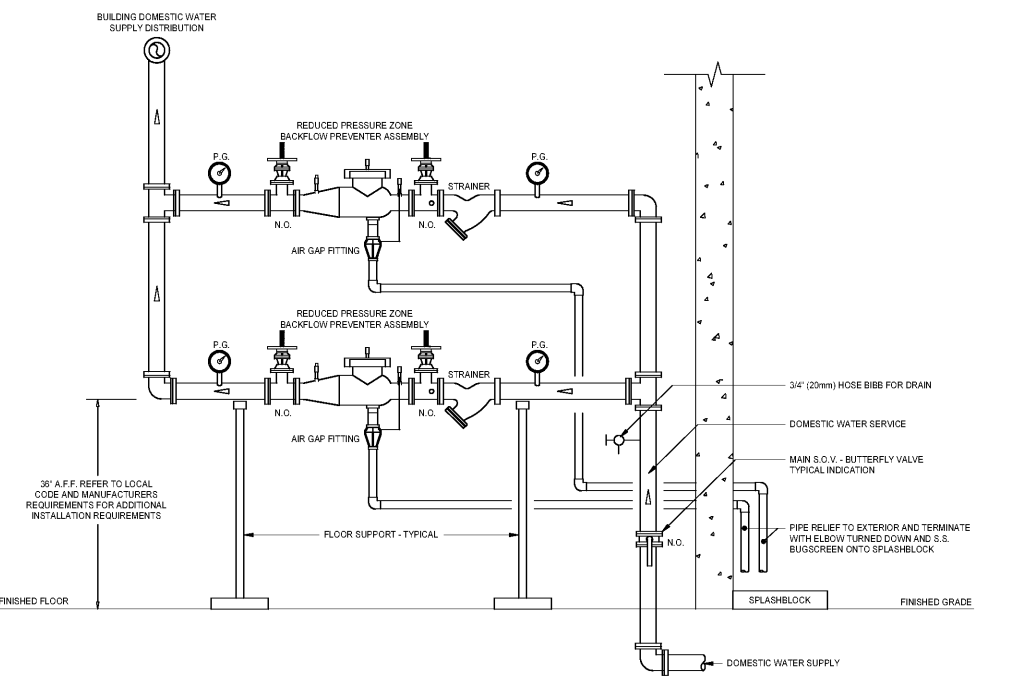
WATER HAMMER ARRESTOR DETAIL
 NO SCALE



B LAUNDRY EXTRACTOR TRENCH DRAIN DETAIL
 12" = 1'-0"

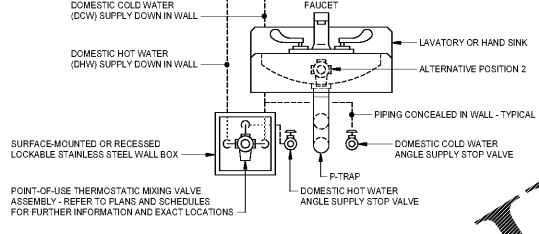


DOMESTIC WATER MOTORIZED ISOLATION VALVE
 NO SCALE

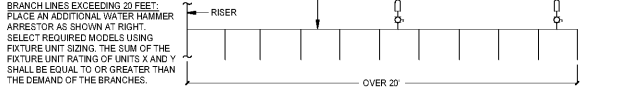


A WATER SERVICE ENTRANCE DETAIL
 12" = 1'-0"

NOTES:
 1. PIPING DOWNSTREAM OF SUPPLY STOPS NOT SHOWN FOR CLARITY. ALL REQUIRED FIXTURE AND EQUIPMENT CLEARANCES AND ACCESS SHALL BE MAINTAINED.
 2. PRIMARY POSITION SHALL BE USED UNLESS OTHERWISE APPROVED. ALTERNATE POSITION 1 MAY BE USED WHERE CEILING HEIGHT DOES NOT EXCEED 10'. ALTERNATE POSITION 2 REQUIRES DETAILED EXAMPLE AND PRIOR APPROVAL.
 3. PRIMARY POSITION (AS INDICATED): LOCATE VALVE IN SURFACE MOUNTED OR RECESSED LOCKABLE STAINLESS STEEL WALL BOX WITH ALL PIPING PRIOR TO SUPPLY STOPS CONCEALED IN WALL. BOX POSITION SHALL BE LOCATED COMPLETELY UNDER FIXTURE WHENEVER POSSIBLE.
 4. ALTERNATIVE POSITION 1 (CONCEALED ABOVE CEILING): LOCATE VALVE ABOVE CEILING AND PROVIDE ACCESS PANEL FOR UNACCESSIBLE CEILING.
 5. ALTERNATIVE POSITION 2 (EXPOSED HIGH UNDER FIXTURE): LOCATE VALVE HIGH BELOW FIXTURE OUT OF SIGHT AND PROVIDE WITH MOUNTING BRACKET TO ENSURE VALVE STAYS IN PLACE.



ASSE-1070 POINT-OF-USE VALVE DETAIL
 NO SCALE



P.D.I. WATER HAMMER ARRESTORS

LENGTH OF PIPE	NOMINAL PIPE DIAMETERS					
	1/2"	3/4"	1"	1-1/4"	1-1/2"	2"
25'	A	A	B	C	D	E
50'	A	B	C	D	E	F
75'	B	C	D	AE	F	FF
100'	C	D	E	F	CF	FF
125'	C	D	F	AF	FF	FF
150'	D	E	F	DF	FF	FFF

SHOCK ABSORBER SELECTION

CODE	PDI SIZE	FIXTURE UNITS
SA-1	A	1-11
SA-2	B	12-32
SA-3	C	33-80
SA-4	D	81-113
SA-5	E	114-154
SA-6	F	155-300

MOSELEY ARCHITECTS

1320 MAIN STREET, SUITE 300, COLUMBIA, SC 29201
 PHONE (803) 724-1252
 MOSELEYARCHITECTS.COM



MARION COUNTY LEC
 591492
 MARION COUNTY
 2715 EAST HWY 76, MULLINS, SC 29574

PROJECT NO: 591492
 DATE: OCTOBER 30, 2020

REVISIONS	DATE	DESCRIPTION

DETAILS

P5.1

10/30/2020 9:46:41 AM