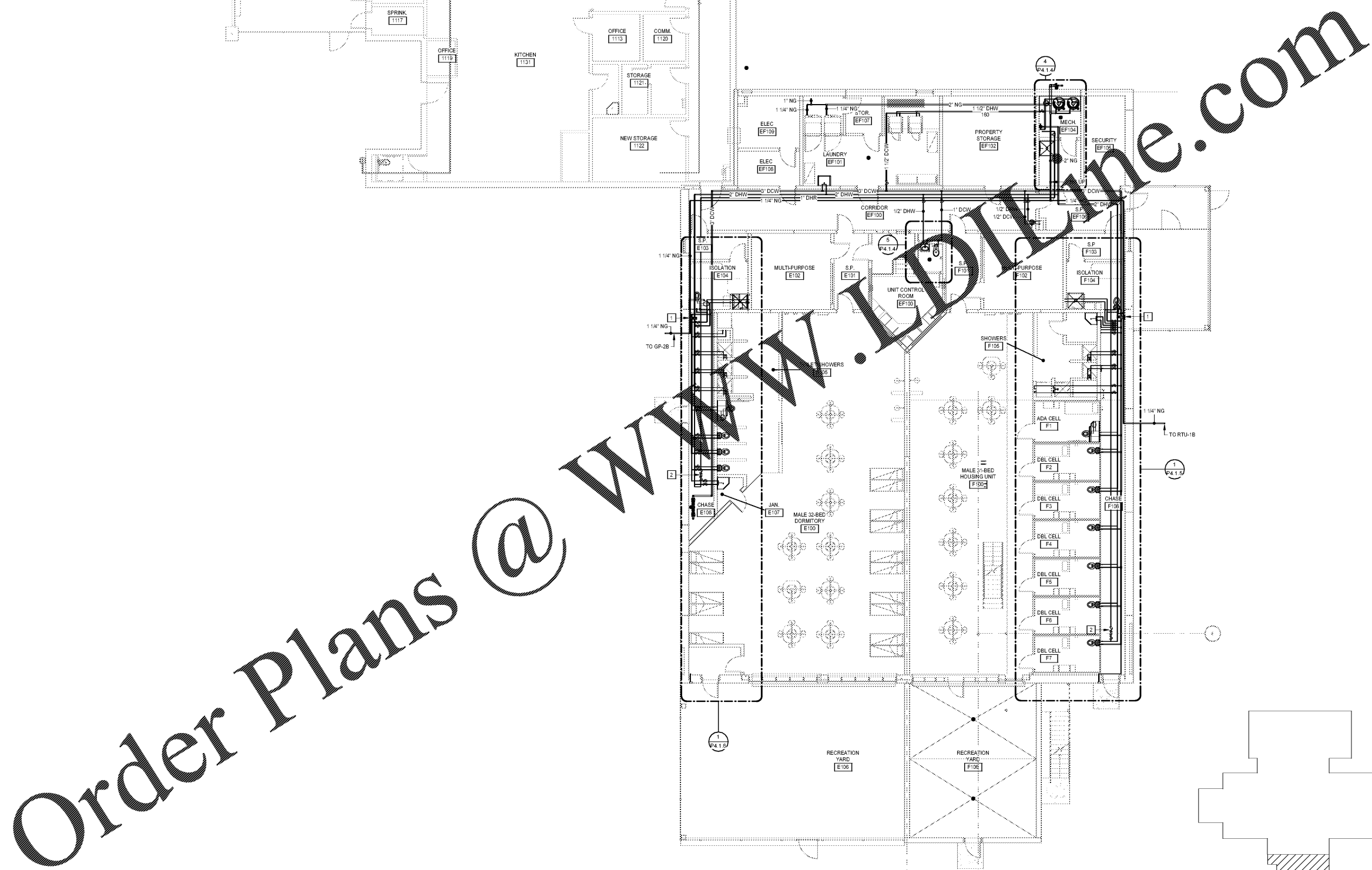


**PLUMBING KEYNOTES**  
 APPLIES TO THIS DRAWING  
 REPRESENTED BY [Symbol]

1. PROVIDE DOMESTIC COLD AND HOT WATER MOTORIZED ISOLATION VALVES. VALVES SHALL BE CONTROLLED BY THE SECURITY ELECTRONICS SYSTEMS IN CENTRAL CONTROL ROOM AB100. RELAY AND VALVE ACTUATOR POWER SHALL BE PROVIDED BY DIVISION 28. COORDINATE WITH SECURITY ELECTRONICS SYSTEM DIVISION 28 FOR SECURITY SYSTEM INTERFACE. REFER TO DOMESTIC WATER MOTORIZED ISOLATION VALVE DETAIL. ALL ZONE CELLBLOCK MANUAL AND SOLENOID ISOLATION VALVES TO BE LOCATED IN CHASE BEHIND CELLS AND ACCESSIBLE FROM LADDER.
2. DOMESTIC HOT WATER RETURN BALANCING STATION. SET BALANCING STATION AT 1GPM FLOW RATE. REFER TO BALANCING STATION DETAIL ON P5.2.

DWG P2.1.3



**MOSELEYARCHITECTS**

1320 MAIN STREET, SUITE 300, COLUMBIA, SC 29201  
 PHONE (803) 724-1252  
 MOSELEYARCHITECTS.COM



**MARION COUNTY LEC**

591492  
 MARION COUNTY  
 2715 EAST HWY 76, MULLINS, SC 29574

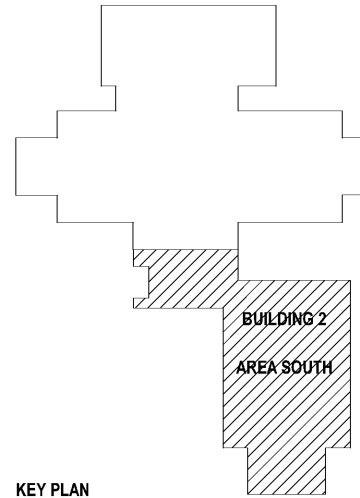
DATE	REVISIONS
PROJECT NO: 591492	
DATE: OCTOBER 30, 2020	
DATE	DESCRIPTION

FIRST FLOOR PLAN - DOMESTIC - AREA SOUTH

**P2.1.4**

**N**  
 FIRST FLOOR PLAN - DOMESTIC - AREA SOUTH  
 1/8" = 1'-0"

KEY PLAN



Order Plans @ [WWW.LDLINE.COM](http://WWW.LDLINE.COM)