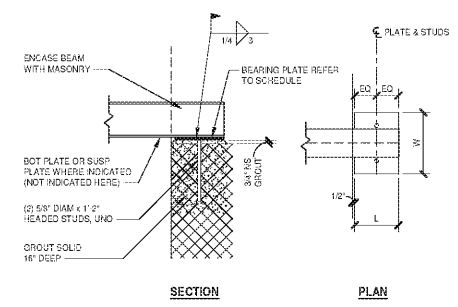


NOTES:

1. REINFORCING BAR SIZE INDICATED ON FOUNDATION PLAN.
2. DETAILS ARE PROVIDED FOR VERTICAL REINFORCING STEEL PLACEMENT ONLY. REFER TO ARCHITECTS DRAWINGS FOR SPECIFIC MASONRY DETAILS.

CMU WALL REINFORCING DETAILS
NO SCALE



BEAM ANCHORAGE DETAILS
NO SCALE

BEARING PLATE SCHEDULE				
MARK	W	L	REMARKS	
BP1	9"	3/4"	7"	
BP2	9"	2 1/4"	9"	
BP3	9"	3/4"	11"	
BP4	12"	1"	11"	3/4" DIAM. WOOD STUDS

LINTEL SCHEDULE					
MARK	DIAGRAM	BOND BEAM (W x H)	REINFORCING	STEEL	NOTES
L1	[Diagram]	8 x 8	(2) #5 CONT.		
L2	[Diagram]	8 x 16	(2) #5 CONT. EA COURSE		
L3	[Diagram]	12 x 8	(2) #5 CONT.		
L4	[Diagram]	12 x 16	(2) #5 CONT. EA COURSE		
L5	[Diagram]	12 x 24	(2) #5 CONT. EA COURSE		
L6	[Diagram]			CONT. 7/8" BENT PLATE	CONN TO CMU W/ 5/8" DIAM. SCREW ANCHORS AT 9" OC, SET ANCHOR 5 1/2" FROM BOT OF VERT LEO, WELD TO STEEL LINTELS TOP & BOT.
L7	[Diagram]			W/ 5/16" x 9'-7" BOTTOM PLATE	
L8	[Diagram]			W/ 6x26 W/ 5/16" x 9'-7" BOTTOM PLATE	

LINTEL NOTES

1. LINTELS FOR STRUCTURAL OPENINGS (WINDOWS, DOORS, LOUVERS) IN BEARING WALLS AND NON-BEARING WALLS ARE IDENTIFIED BY MARK NUMBER ON THE FRAMING PLANS AND INCLUDED IN THE LINTEL SCHEDULE.
2. LINTELS FOR ARCHITECTURAL OPENINGS IN NON-LOAD BEARING WALLS AND OTHER WALLS WHICH ARE NOT INDICATED ON THE FRAMING PLANS SHALL BE CONSTRUCTED PER NOTES A, B OR C BELOW.

A. STEEL ANGLE LINTELS

PROVIDE ONE ANGLE FOR EACH NOMINAL 4" OF WALL THICKNESS PER THE FOLLOWING SCHEDULE:

MASONRY OPENING	ANGLE SIZE
0" TO 5'-0"	L3 12x3 1/2x 3/16
5'-1" TO 5'-0"	L4 3 1/2x 5 1/2 (LLV)
6'-1" TO 7'-0"	L4 3 1/2x 3/8 (LLV)
OVER 7'-0"	AS DETAILED

FOR OPENINGS ON 16" CMU, HORIZONTAL LEADS OF ANGLES SHALL BE A COMBINATION OF 5" AND 4".

FOR OPENINGS IN 6" CMU REQUIRING STEEL LINTELS, USE WITH UP TO 7'-0" OPENING.

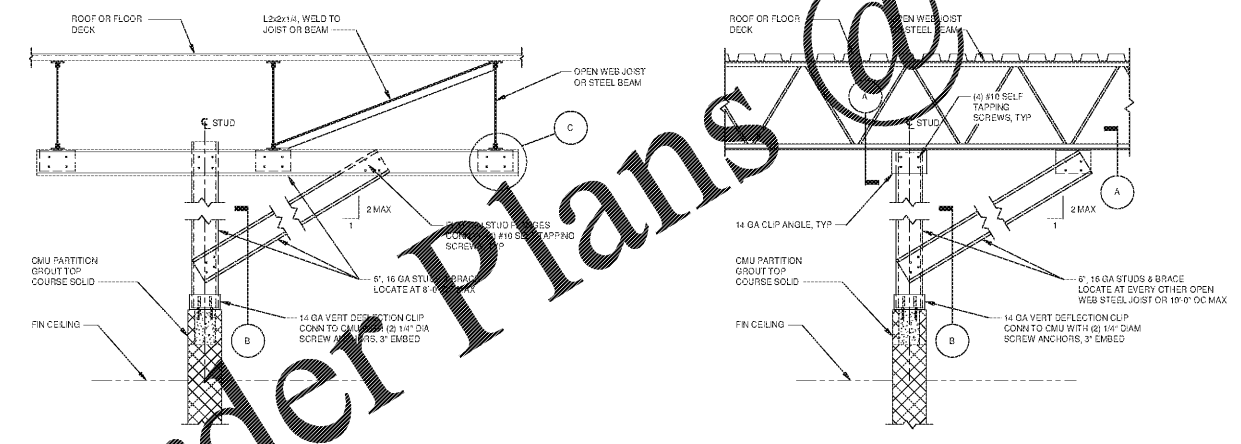
B. REINFORCED BOND BEAM LINTELS

LINTELS SHALL MATCH THICKNESS OF WALL. REINFORCE 6" BOND BEAM WITH (1) #5 BAR AT BOTTOM. BOND BEAM SHALL BE 6" DEEP FOR OPENING UP TO 5'-0", AND SHALL BEAR 6" ON SOLID MASONRY EACH END. BOND BEAM SHALL BE 16" DEEP FOR OPENING WITH UP TO 7'-0" AND SHALL BEAR 16" ON SOLID MASONRY EACH END WITH REINFORCING TOP AND BOTTOM. PLACE GROUT MONOLITHICALLY IN BOTH COURSES OF 16" DEEP BOND BEAM.

C. PRECAST CONCRETE LINTELS

PRECAST CONCRETE LINTELS SHALL BE 3'-0" x 7'-0" FOR EACH NOMINAL 4" THICKNESS OF WALL. REINFORCING SHALL BE (1) #4 AT TOP AND BOTTOM WITH 1'-0" COVER FOR OPENINGS IN 4" WALL. LINTEL SHALL BE 3'-0" x 7'-0" REINFORCED WITH (1) #5 TOP AND BOTTOM. MASONRY OPENING WIDTH SHALL BE 6'-0" OR LESS. DO NOT USE PRECAST CONCRETE LINTELS IN EXPOSED LOCATIONS.

3. LINTELS FOR MECHANICAL DUCTWORK PENETRATIONS NOT OTHERWISE DETAILED SHALL BE ONE OF THE ABOVE (NOTE 2A, 2B OR 2C).
4. LINTELS SHALL BEAR 6" ONTO SOLID OR GROUT FILLED MASONRY, UNLESS OTHERWISE INDICATED.
5. LINTELS ARE REQUIRED OVER ALL MASONRY OPENINGS GREATER THAN 6" IN WIDTH.
6. LINTELS ARE NOT REQUIRED ABOVE HOLLOW METAL FRAMES IN OPENINGS 3'-4" OR LESS IN NON-BEARING MASONRY PARTITIONS. GROUT HEAD OF FRAMES SOLID BEFORE PLACING MASONRY.
7. ALL LINTELS IN EXTERIOR WALLS SHALL BE GALVANIZED.



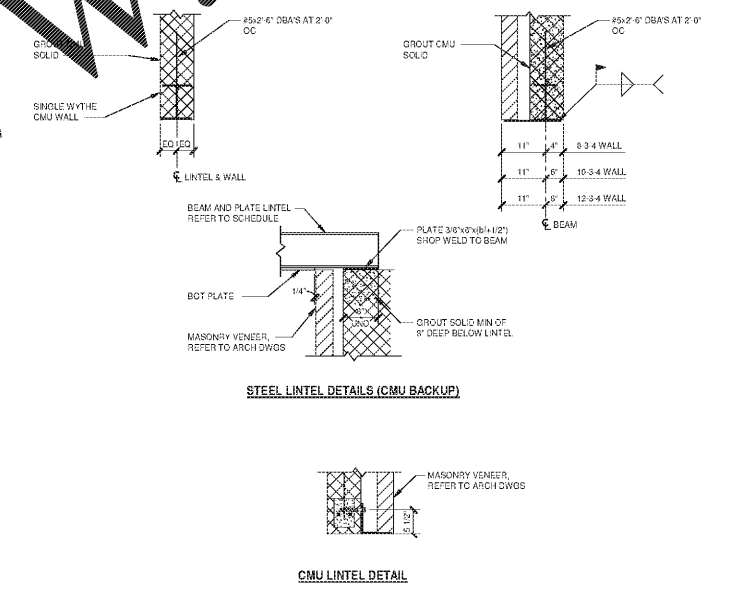
BRACING DETAILS FOR NON-LOAD BEARING INTERIOR MASONRY PARTITIONS
NO SCALE

NOTES:

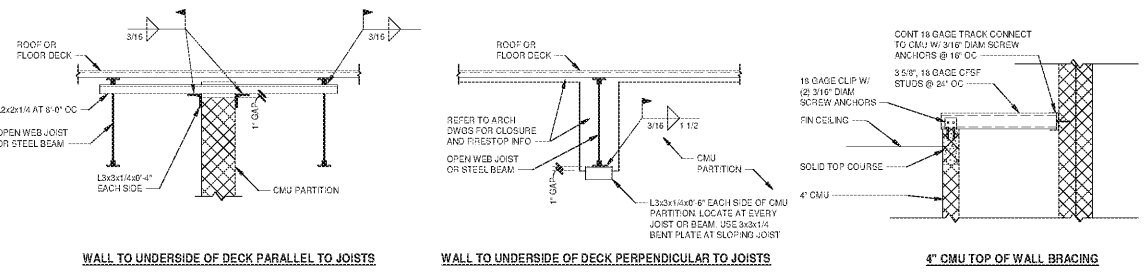
1. BRACE INTERIOR NON-LOAD BEARING MASONRY WALLS IN ACCORDANCE WITH THESE DETAILS UNLESS OTHERWISE INDICATED.
2. IN LIEU OF BRACING AT TOPS OF WALLS, BRACING MAY BE PROVIDED BY INTERSECTING MASONRY WALLS WHEN THE DISTANCE BETWEEN THE INTERSECTING WALLS DOES NOT EXCEED THE FOLLOWING:

NOMINAL THICKNESS OF BRACED WALLS	MAXIMUM SPACING BETWEEN INTERSECTING WALLS
2"	12'-0"
4"	18'-0"
6"	22'-0"
8"	26'-0"
10"	30'-0"
12"	33'-0"

3. BRACING IS REQUIRED IN ACCORDANCE WITH THESE DETAILS IF A VERTICAL CONTROL JOINT OCCURS BETWEEN INTERSECTING WALLS.
4. REFER TO ARCHITECTURAL DRAWINGS FOR INTERIOR PARTITION TYPES AND LOCATIONS.
5. INSTALL BRACING AFTER ALL ROOF DEAD LOAD IS IN PLACE.



STEEL LINTEL DETAILS (CMU BACKUP)
CMU LINTEL DETAIL



WALL TO UNDERSIDE OF DECK PARALLEL TO JOISTS
WALL TO UNDERSIDE OF DECK PERPENDICULAR TO JOISTS
4" CMU TOP OF WALL BRACING

MOSELEY ARCHITECTS

6210 ARDREY HILL ROAD - THE HUB AT WAVERLY, SUITE 405 - CHARLOTTE, NC 28277
PHONE (704) 540-3755 FAX (704) 540-3754
MOSELEYARCHITECTS.COM



MARION COUNTY LEC
591492
MARION COUNTY
2715 EAST HWY 76, MULLINS, SC 29574

PROJECT NO.	DATE	REVISIONS
591492	OCTOBER 30, 2020	
		DATE DESCRIPTION

TYPICAL MASONRY WALL AND LINTEL DETAILS

S4.0.1

Order Plans @ WWW.LDILine.com

10/30/2020 4:10:46 PM