

SECURITY TYPICAL ONE LINE DIAGRAM

**KEYNOTES**  
 APPLIES TO SINGLE LINE DIAGRAM REPRESENTED BY n

- UPGRADE TS-1 AND TS-2 AS PER 285020. PROVIDE VMS RECORDER LARGE ENOUGH TO HANDLE ALL THE EXISTING AND ADDED CAMERAS PLUS 25% EXPANSION. TURN OVER EXISTING VMS RECORDER TO THE OWNER.
- PROVIDE FIBER CONNECTION BETWEEN BUILDING 1 AND BUILDING 2 AND INTEGRATE ALL THE SECURITY AS ONE SYSTEM.
- INTEGRATE WITH SECURITY ELECTRONICS HEAD END.
- ALL POWER TO SECURITY HEADEND EQUIPMENT AND ASSOCIATED FIELD COMPONENTS SHALL BE CONNECTED TO EMERGENCY / GENERATOR POWER THROUGH AN (SCSC) PROVIDED UPS.
- PROVIDE CAPABILITY TO CUT OFF WATER AND LIGHTING VIA TOUCHSCREEN.

**ONE-LINE DIAGRAM GENERAL NOTES**

A. SECURITY CONTROL SYSTEM CABLING AND WIRING INDICATED IS DIAGRAMMATIC ONLY. IT IS INTENDED TO SHOW PROPOSED LOCATIONS OF MAJOR COMPONENTS OF THE SECURITY CONTROL SYSTEM AND THEIR INTERCONNECTION.

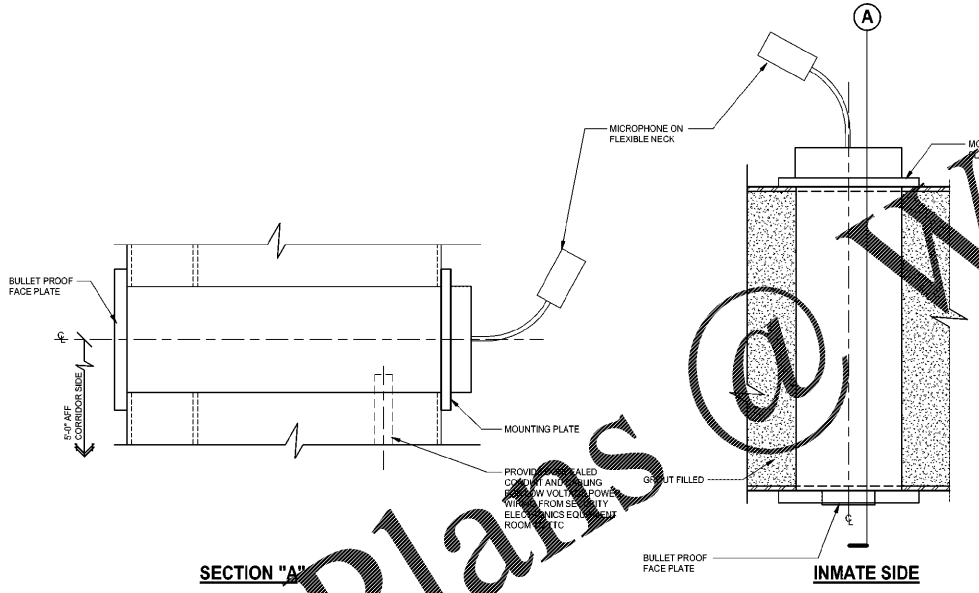
B. NO CONDUIT SIZES OR QUANTITIES NOR CONDUCTOR TYPES OR QUANTITIES ARE INDICATED. THE SECURITY CONTROL SYSTEM CONTRACTORS (SCSC) INDIVIDUAL CONTROL SOLUTION WILL DETERMINE THE EXACT CONDUIT AND CONDUCTOR REQUIREMENTS. REFER TO DRAWINGS FOR QUANTITIES AND LOCATIONS OF INDIVIDUAL SECURITY CONTROL SYSTEM EQUIPMENT AND DEVICES. REFER TO DIVISION 26 ELECTRICAL FOR POWER.

**SECURITY - CAMERA SCHEDULE EXISTING**

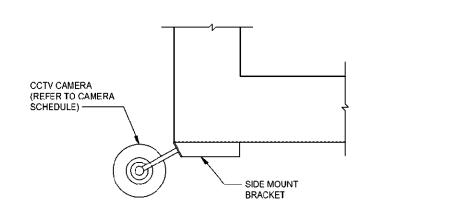
CAMERA NO.	TYPE	HEIGHT	DETAIL	NOTES
E01	EXISTING	EXISTING	-	
E02	EXISTING	EXISTING	-	
E03	EXISTING	EXISTING	-	
E04	EXISTING	EXISTING	-	
E05	EXISTING	EXISTING	-	REPLACE - 05
E06	EXISTING	EXISTING	-	RELOCATE - 06
E07	EXISTING	EXISTING	-	RELOCATE - 07
E08	EXISTING	EXISTING	-	
E09	EXISTING	EXISTING	-	
E10	EXISTING	EXISTING	-	
E11	EXISTING	EXISTING	-	
E12	EXISTING	EXISTING	-	
E13	EXISTING	EXISTING	-	
E14	EXISTING	EXISTING	-	
E15	EXISTING	EXISTING	-	
E16	EXISTING	EXISTING	-	
E17	EXISTING	EXISTING	-	
E18	EXISTING	EXISTING	-	
E19	EXISTING	EXISTING	-	
E20	EXISTING	EXISTING	-	
E21	EXISTING	EXISTING	-	
E22	EXISTING	EXISTING	-	
E23	EXISTING	EXISTING	-	
E24	EXISTING	EXISTING	-	
E25	EXISTING	EXISTING	-	
E26	EXISTING	EXISTING	-	RELOCATE - 26
E27	EXISTING	EXISTING	-	
E28	EXISTING	EXISTING	-	
E29	EXISTING	EXISTING	-	
E30	EXISTING	EXISTING	-	
E31	EXISTING	EXISTING	-	
E32	EXISTING	EXISTING	-	
E33	EXISTING	EXISTING	-	
E34	EXISTING	EXISTING	-	
E35	EXISTING	EXISTING	-	
E36	EXISTING	EXISTING	-	
E37	EXISTING	EXISTING	-	
E38	EXISTING	EXISTING	-	

**SECURITY - CAMERA SCHEDULE**

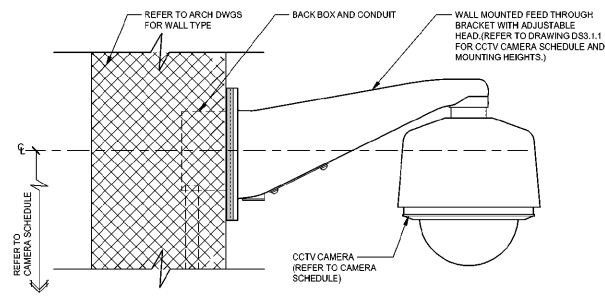
CAMERA NO.	TYPE	HEIGHT	DETAIL	NOTES
05	FIXED	SURFACE	CEILING	2/8S3.1 REPLACES E05
06	EXISTING	TBD	TBD	E06 RELOCATED
07	EXISTING	TBD	TBD	E07 RELOCATED
08	EXISTING	TBD	TBD	E08 RELOCATED
51	MULTI-LENS (270°)	WALL	14' AFF	7/8S3.1
52	MULTI-LENS (270°)	WALL	14' AFF	7/8S3.1
53	MULTI-LENS (270°)	WALL	14' AFF	7/8S3.1
54	FIXED	SURFACE	10' 4" AFF	4/8S3.1
55	FIXED	SURFACE	10' 4" AFF	4/8S3.1
56	FIXED	SURFACE	11' 8" AFF	4/8S3.1
57	FIXED	SURFACE	CEILING	2/8S3.1
58	FIXED	SURFACE	CEILING	2/8S3.1 WIDE ANGLE
59	FIXED	SURFACE	CEILING	2/8S3.1 WIDE ANGLE
60	MULTI-LENS (270°)	SURFACE	13' 8" AFF	6/8S3.1
61	FIXED	SURFACE	9' 8" AFF	4/8S3.1 WIDE ANGLE
62	FIXED	SURFACE	9' 8" AFF	4/8S3.1 WIDE ANGLE
63	FIXED	SURFACE	9' 8" AFF	4/8S3.1 WIDE ANGLE
64	FIXED	SURFACE	9' 8" AFF	4/8S3.1 WIDE ANGLE
65	MULTI-LENS (270°)	SURFACE	13' 8" AFF	6/8S3.1
66	FIXED	SURFACE	11' 8" AFF	4/8S3.1 WIDE ANGLE
67	FIXED	CORNER	CEILING	3/8S3.1
68	FIXED	CORNER	CEILING	3/8S3.1
69	FIXED	SURFACE	CEILING	3/8S3.1
70	FIXED	SURFACE	CEILING	2/8S3.1 WIDE ANGLE
71	FIXED	SURFACE	CEILING	2/8S3.1 WIDE ANGLE
101	FIXED	SURFACE	CEILING	2/8S3.1
102	FIXED	SURFACE	CEILING	2/8S3.1
103	FIXED	SURFACE	CEILING	2/8S3.1 WIDE ANGLE
104	FIXED	SURFACE	CEILING	2/8S3.1 WIDE ANGLE
105	FIXED	SURFACE	CEILING	2/8S3.1 WIDE ANGLE
106	FIXED	SURFACE	CEILING	2/8S3.1 WIDE ANGLE
107	FIXED	CORNER	CEILING	3/8S3.1
108	FIXED	CORNER	CEILING	3/8S3.1
109	FIXED	SURFACE	CEILING	2/8S3.1 WIDE ANGLE
110	FIXED	SURFACE	CEILING	2/8S3.1 WIDE ANGLE
111	FIXED	SURFACE	CEILING	2/8S3.1
112	FIXED	SURFACE	CEILING	2/8S3.1
113	FIXED	SURFACE	CEILING	2/8S3.1 WIDE ANGLE
114	FIXED	CORNER	CEILING	3/8S3.1
115	FIXED	CORNER	CEILING	3/8S3.1
116	FIXED	SURFACE	CEILING	2/8S3.1
117	FIXED	SURFACE	10' 4" AFF	4/8S3.1
118	FIXED	SURFACE	CEILING	2/8S3.1 WIDE ANGLE
119	FIXED	SURFACE	13' 8" AFF	4/8S3.1
120	FIXED	SURFACE	10' 4" AFF	4/8S3.1
121	FIXED	SURFACE	10' 4" AFF	4/8S3.1
122	FIXED	SURFACE	10' 4" AFF	4/8S3.1 WIDE ANGLE
123	FIXED	CORNER	CEILING	3/8S3.1
124	FIXED	CORNER	CEILING	3/8S3.1
201	MULTI-LENS (270°)	WALL	10' 4" AFF	7/8S3.1
202	FIXED	SURFACE	12' 2" AFF	4/8S3.1 WIDE ANGLE
203	FIXED	SURFACE	12' 2" AFF	4/8S3.1 WIDE ANGLE
204	MULTI-LENS (180°)	SURFACE	10' 4" AFF	5/8S3.1
205	MULTI-LENS (270°)	WALL	10' 4" AFF	7/8S3.1
206	MULTI-LENS (270°)	WALL	10' 4" AFF	7/8S3.1



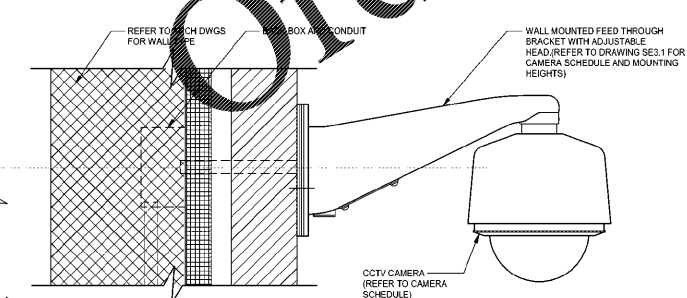
SECTION 'A'



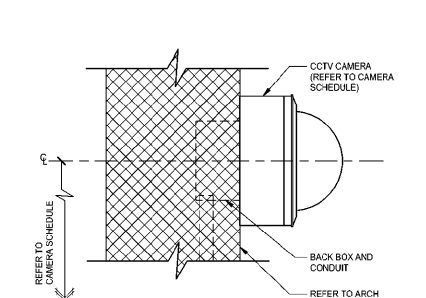
7 EXT CORNER WALL MOUNTED DOME CAMERA  
 TYP SE3.1 3/4" = 1'-0"



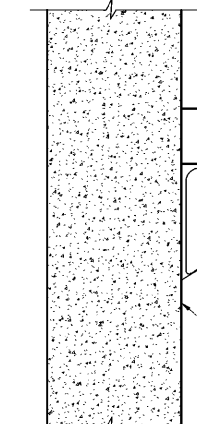
6 INT WALL MOUNTED DOME CAMERA  
 TYP SE3.1 3" = 1'-0"



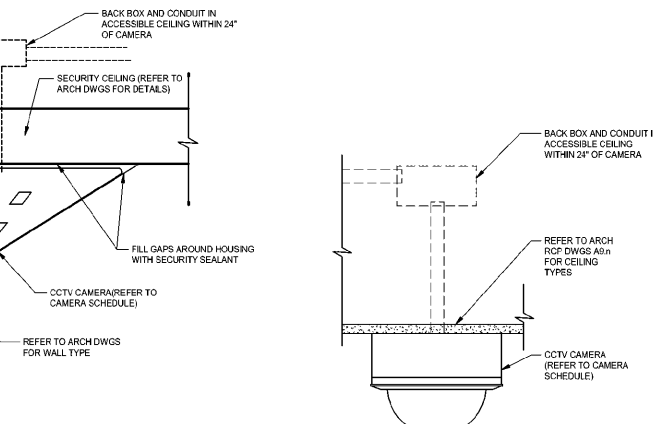
5 EXT WALL MOUNTED DOME CAMERA  
 TYP SE3.1 3" = 1'-0"



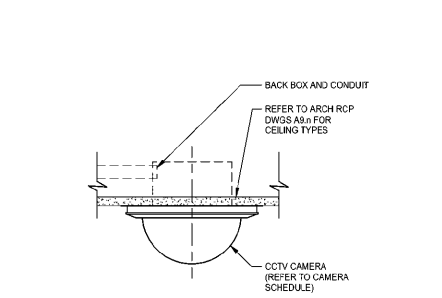
4 WALL SURFACE MOUNTED CAMERA  
 TYP SE3.1 3" = 1'-0"



3 CEILING CORNER MOUNT CAMERA  
 TYP SE3.1 3" = 1'-0"



2 CEILING SURFACE MOUNTED CAMERA  
 TYP SE3.1 3" = 1'-0"



1 CEILING RECESSED MOUNTED CAMERA  
 TYP SE3.1 3" = 1'-0"

**MOSELEY ARCHITECTS**

6210 ARDREY HILL ROAD • THE HUB AT WAVERLY, SUITE 425 • CHARLOTTE, NC 28277  
 PHONE (704) 540-3755 FAX (704) 540-3754  
 MOSELEYARCHITECTS.COM



**MARION COUNTY LEC**  
 591492  
 MARION COUNTY  
 2715 EAST HWY 76, MULLINS, SC 29574

PROJECT NO.	DATE	REVISIONS
591492	OCTOBER 30, 2020	

CAMERA SCHEDULE, DETAILS AND ONE LINE DIAGRAM

SE3.1

11/22/2020 8:06:29 AM