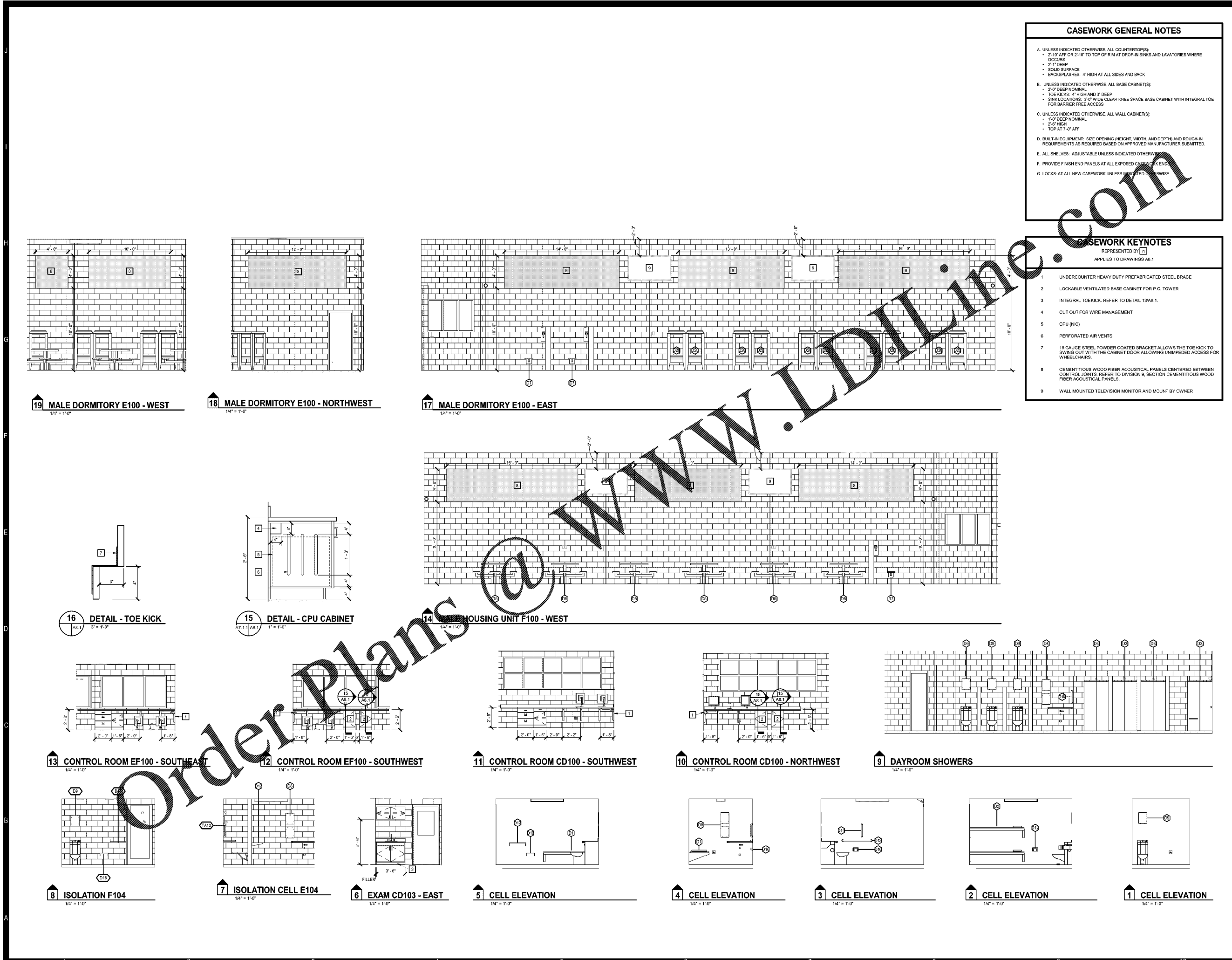


1/22/2020, 8:11:15 AM



CASEWORK GENERAL NOTES

A. UNLESS INDICATED OTHERWISE, ALL COUNTERTOP(S):
 • 2'-10" AFF OR 2'-10" TO TOP OF RIM AT DROP-IN SINKS AND LAVATORIES WHERE OCCURS
 • 2'-1" DEEP
 • SOLID SURFACE
 • BACKSPASHES: 4" HIGH AT ALL SIDES AND BACK

B. UNLESS INDICATED OTHERWISE, ALL BASE CABINET(S):
 • 2'-0" DEEP NOMINAL
 • TOE KICKS: 4" HIGH AND 3" DEEP
 • SINK LOCATIONS: 3" WIDE CLEAR KNEE SPACE BASE CABINET WITH INTEGRAL TOE FOR BARRIER FREE ACCESS

C. UNLESS INDICATED OTHERWISE, ALL WALL CABINET(S):
 • 1'-0" DEEP NOMINAL
 • 2'-0" HIGH
 • TOP AT 7'-0" AFF

D. BUILT-IN EQUIPMENT: SIZE OPENING (HEIGHT, WIDTH AND DEPTH) AND ROUGH-IN REQUIREMENTS AS REQUIRED BASED ON APPROVED MANUFACTURER SUBMITTED.

E. ALL SHELVES: ADJUSTABLE UNLESS INDICATED OTHERWISE

F. PROVIDE FINISH END PANELS AT ALL EXPOSED CASEWORK ENDS

G. LOCKS: AT ALL NEW CASEWORK UNLESS INDICATED OTHERWISE

CASEWORK KEYNOTES
 REPRESENTED BY [n]
 APPLIES TO DRAWINGS AB.1

- 1 UNDERCOUNTER HEAVY DUTY PREFABRICATED STEEL BRACE
- 2 LOCKABLE VENTILATED BASE CABINET FOR P.C. TOWER
- 3 INTEGRAL TOEKICK, REFER TO DETAIL 13AB.1
- 4 CUT OUT FOR WIRE MANAGEMENT
- 5 CPU (NIC)
- 6 PERFORATED AIR VENTS
- 7 18 GAUGE STEEL POWDER COATED BRACKET ALLOWS THE TOE KICK TO SWING OUT WITH THE CABINET DOOR ALLOWING UNIMPEDED ACCESS FOR WHEELCHAIRS.
- 8 CEMENTITIOUS WOOD FIBER ACOUSTICAL PANELS CENTERED BETWEEN CONTROL JOINTS, REFER TO DIVISION 9, SECTION CEMENTITIOUS WOOD FIBER ACOUSTICAL PANELS.
- 9 WALL MOUNTED TELEVISION MONITOR AND MOUNT BY OWNER

MOSELEYARCHITECTS



6210 ARDREY HELL ROAD • THE HUB AT WAVERLY, SUITE 425 • CHARLOTTE, NC 28277
 PHONE (704) 540-3750 FAX (704) 540-3754
 MOSELEYARCHITECTS.COM

MARION COUNTY LEC

591492
 MARION COUNTY
 2715 EAST HWY 76, MULLINS, SC 29574

PROJECT NO: 591492
 DATE: OCTOBER 30, 2020

DATE	REVISIONS	DESCRIPTION

CASEWORK AND ELEVATIONS

A8.1