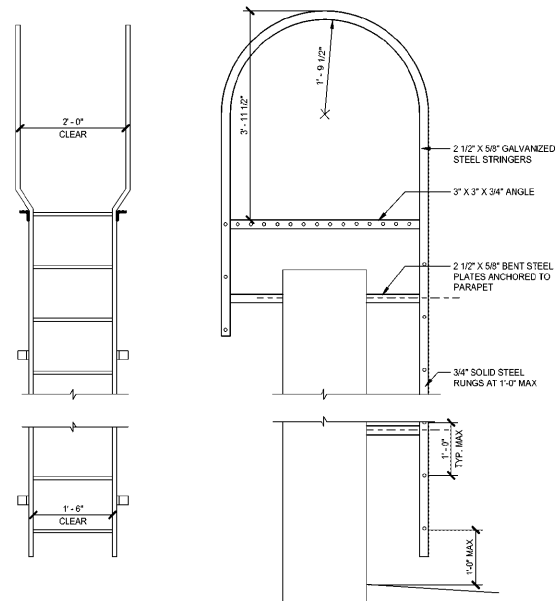
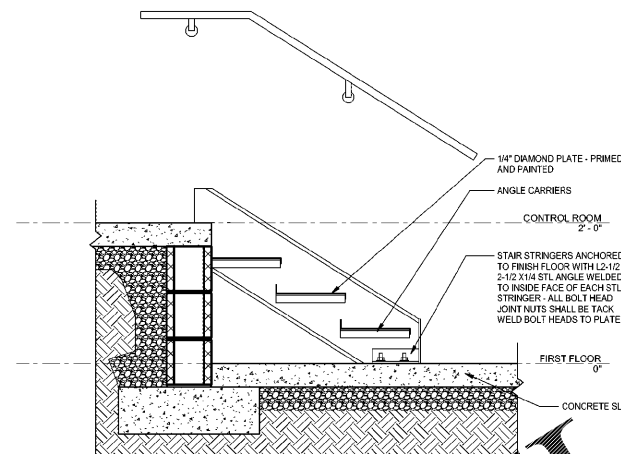


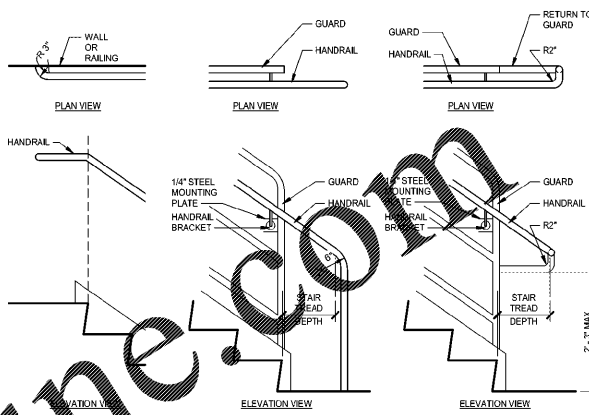
11 ENLARGED PLAN AT EXTERIOR EGRESS STAIR
A2.1.1/A6.1.1 1/4" = 1'-0"



2 ROOF TO ROOF LADDER DETAIL
A6.1.1 3/4" = 1'-0"



13 STAIR DETAIL
A2.1.1/A6.1.1 1" = 1'-0"

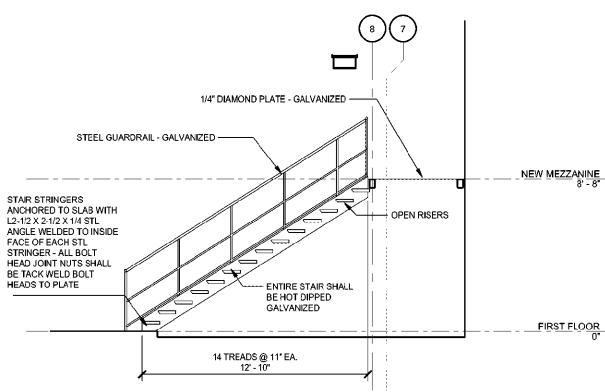


STAIR AND RAMP GENERAL NOTES
 A. ALL RAILING INFILL PANELS: 3/4" X 3/4" STL BARS, UNO
 B. TOP OF HANDRAIL: 3'-0" ABOVE EDGE OF RISERS AND FINISH FLOOR
 C. TOP OF GUARDS: 3'-7" ABOVE EDGE OF RISERS AND FINISH FLOOR
 D. ALL RAILING: 1 1/4" STL PIPE, UNO

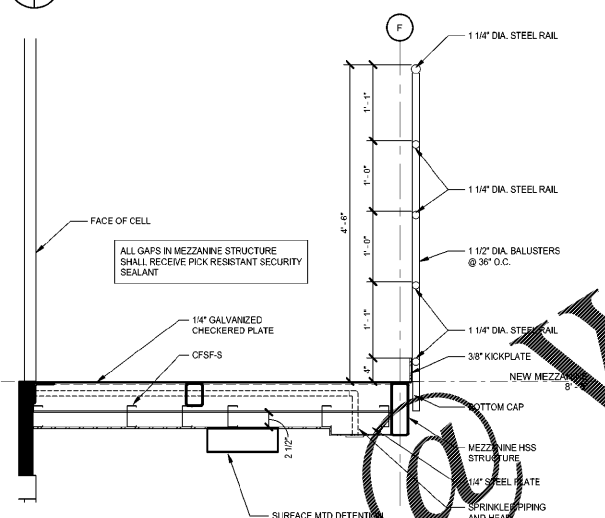


MOSELEYARCHITECTS

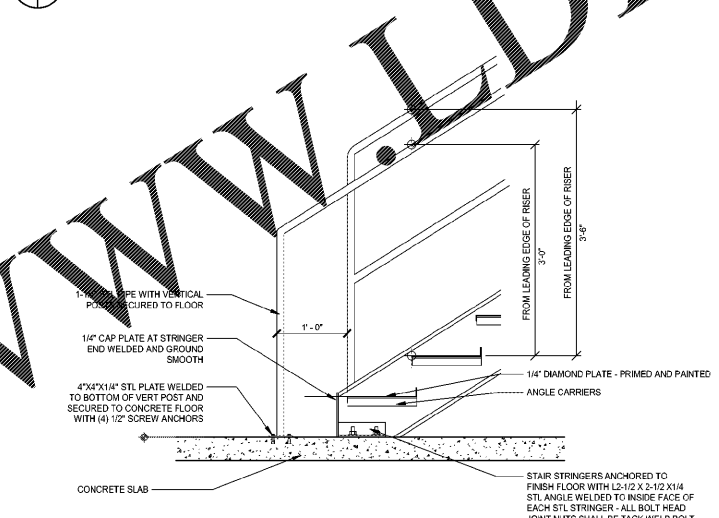
6210 ARDREY HILL ROAD • THE HUB AT WAVERLY, SUITE 425 • CHARLOTTE, NC 28277
 PHONE (704) 540-3750 FAX (704) 540-3754
 MOSELEYARCHITECTS.COM



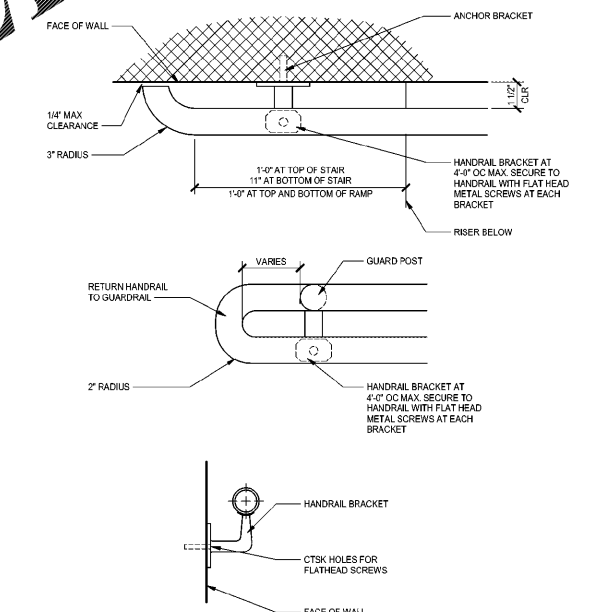
12 STAIR SECTION AT EXTERIOR EGRESS STAIR
A6.1.1/A6.1.1 1/4" = 1'-0"



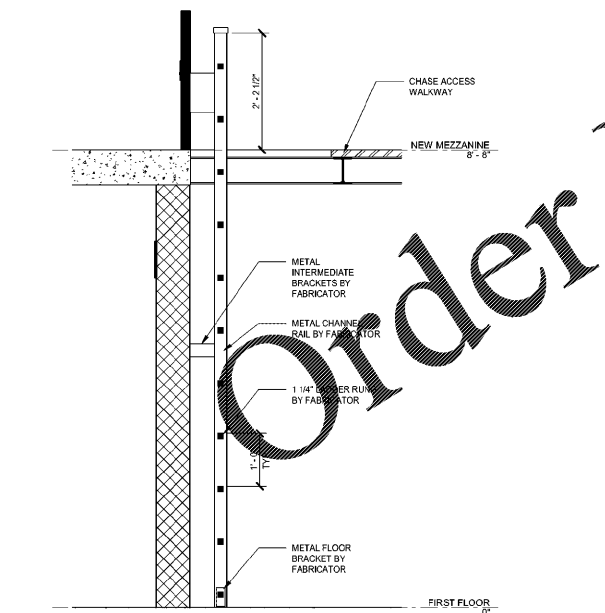
8 MEZZANINE SECTION
A6.1.1/A6.1.1 1" = 1'-0"



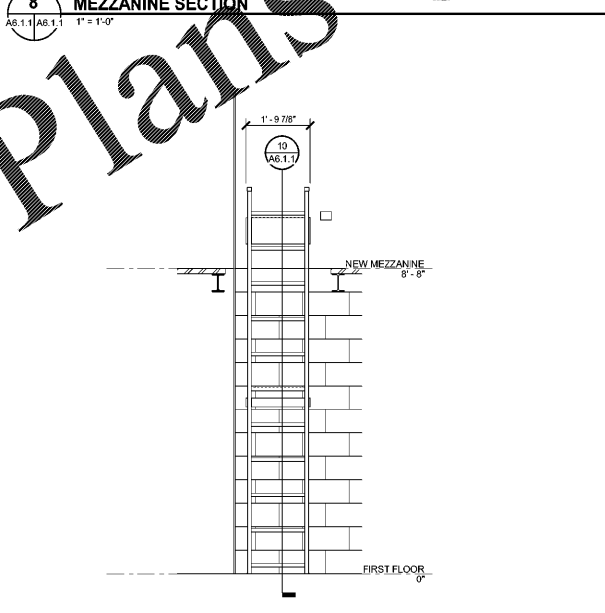
5 STAIR DETAIL
A6.1.1/A6.1.1 1" = 1'-0"



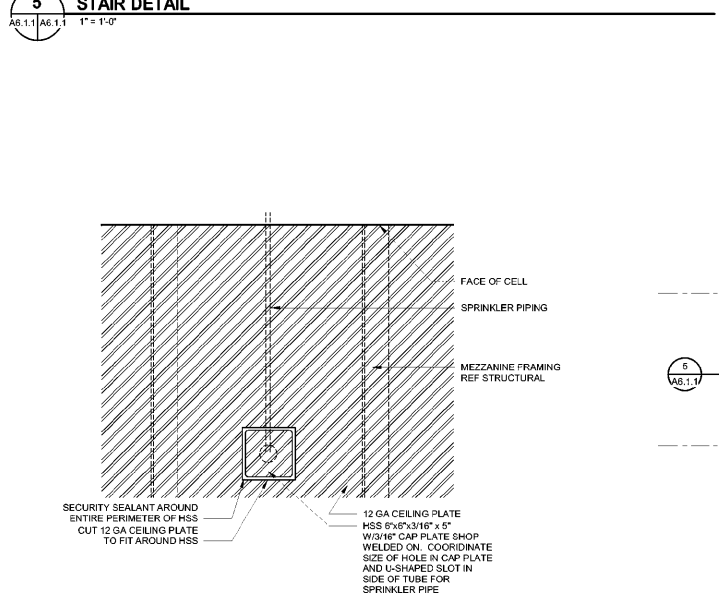
HANDRAIL DETAILS
NO SCALE



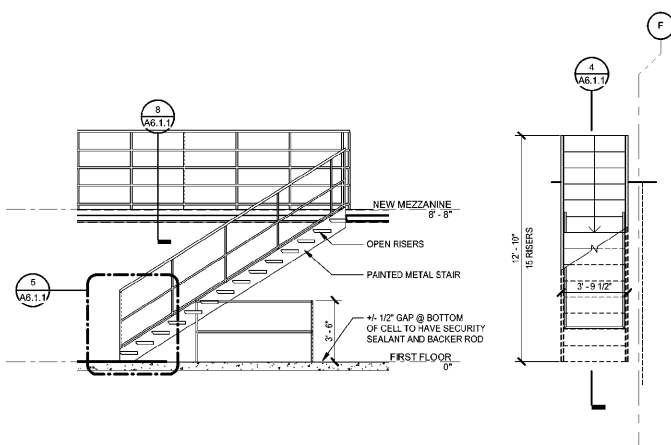
10 SECTION AT ACCESS LADDER
A6.1.1/A6.1.1 3/4" = 1'-0"



9 LADDER ELEVATION
A7.1.1/A6.1.1 1/2" = 1'-0"



7 SPRINKLER SURROUND RCP
A6.1.1 1 1/2" = 1'-0"



4 STAIR PLAN/ SECTION
A6.1.1/A6.1.1 1/4" = 1'-0"

MARION COUNTY LEC

591492
 MARION COUNTY
 2715 EAST HWY 76, MULLINS, SC 29574

DATE	REVISIONS	DESCRIPTION

ENLARGED STAIR & RAMP DETAILS

A6.1.1

11/22/2020 8:10:59 AM