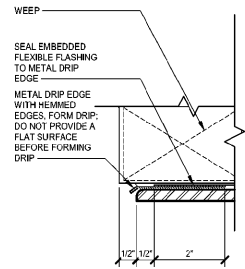
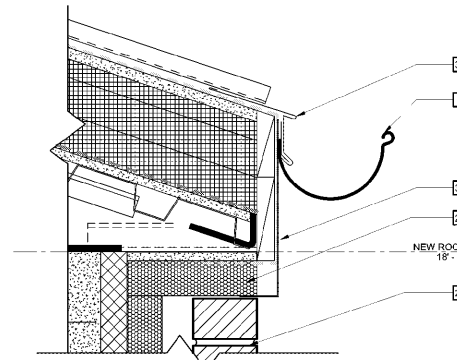


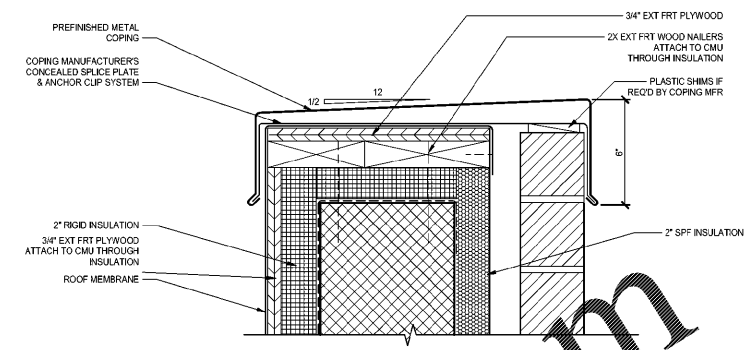
12 SECTION DETAIL
AS.1.3/AS.2.2 1 1/2" = 1'-0"



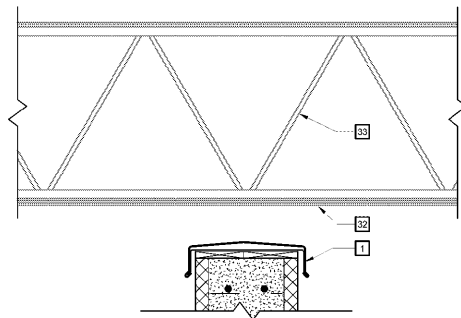
9 TYPICAL TWO-PIECE THROUGH WALL FLASHING
AS.2.1/AS.2.2 6" = 1'-0"



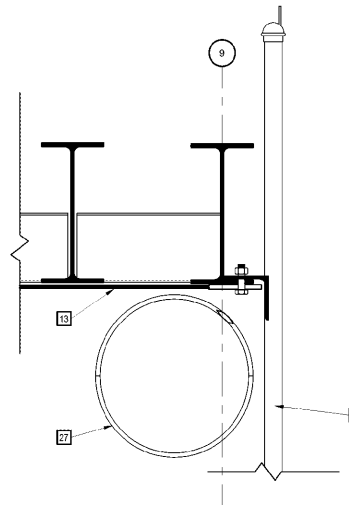
6 ENLARGED SECTION DETAIL
AS.2.1/AS.2.2 3" = 1'-0"



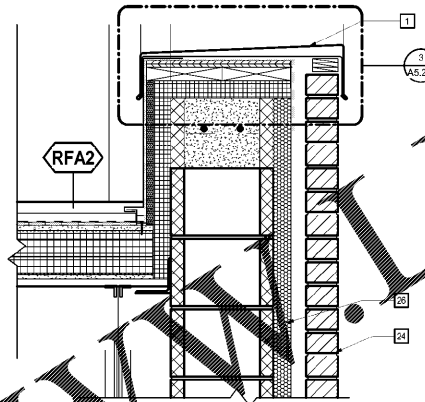
3 ENLARGED DETAIL
AS.2.1/AS.2.2 3" = 1'-0"



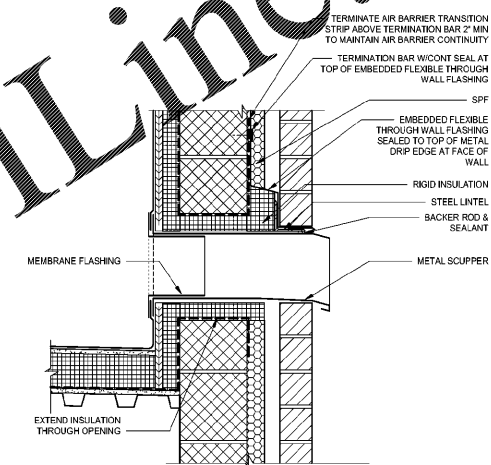
11 SECTION DETAIL
AS.1.3/AS.2.2 1 1/2" = 1'-0"



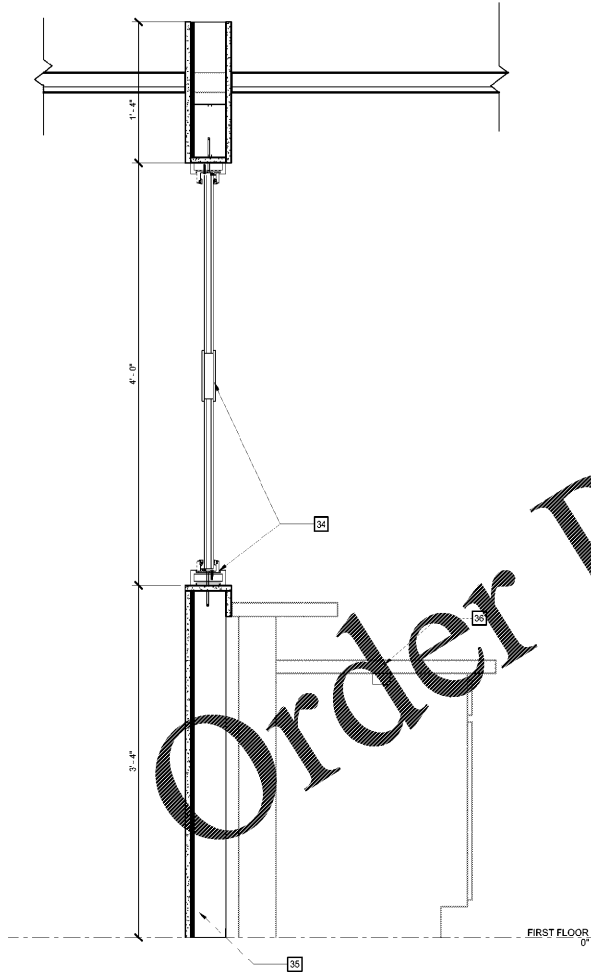
8 SECTION DETAIL
AS.1.3/AS.2.2 1 1/2" = 1'-0"



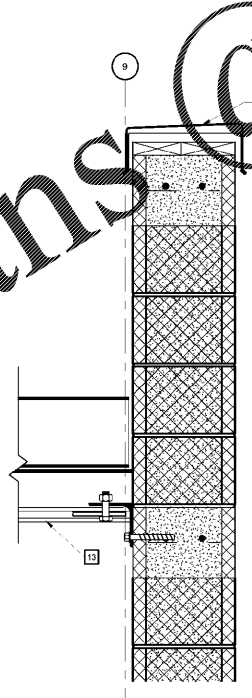
5 SECTION DETAIL
AS.1.2/AS.2.2 1 1/2" = 1'-0"



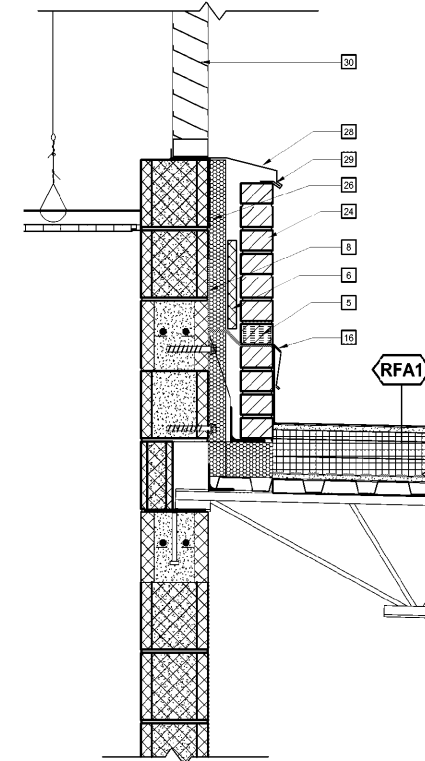
2 OVERFLOW WALL SCUPPER DETAIL
AS.2.1/AS.2.2 1 1/2" = 1'-0"



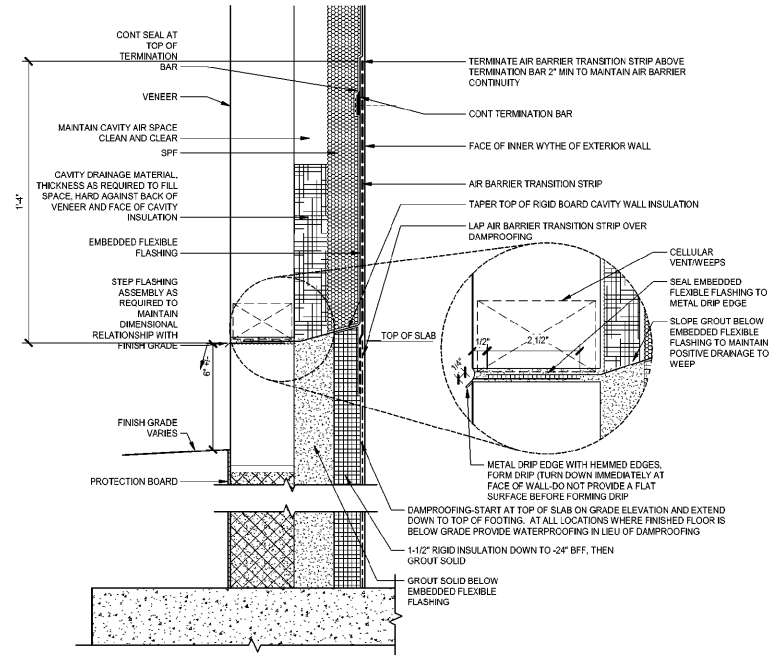
10 DETAIL AT FRONT LOBBY WALL
AS.1.1/AS.2.2 1 1/2" = 1'-0"



7 SECTION DETAIL
AS.1.2/AS.2.2 1 1/2" = 1'-0"



4 SECTION DETAIL
AS.1.2/AS.2.2 1 1/2" = 1'-0"



1 BASE-OF-EXTERIOR CAVITY WALL
AS.2.1/AS.2.2 3" = 1'-0"

MOSELEYARCHITECTS



6210 ARDREY HILL ROAD • THE HUB AT WAVERLY, SUITE 425 • CHARLOTTE, NC 28277
PHONE (704) 540-3750 FAX (704) 540-3754
MOSELEYARCHITECTS.COM

MARION COUNTY LEC

591492
MARION COUNTY
2715 EAST HWY 76, MULLINS, SC 29574

PROJECT NO:	591492
DATE:	OCTOBER 30 2020
REVISIONS:	
DATE:	DESCRIPTION:

SECTION DETAILS

A5.2.2

1/12/2020 8:10:56 AM