

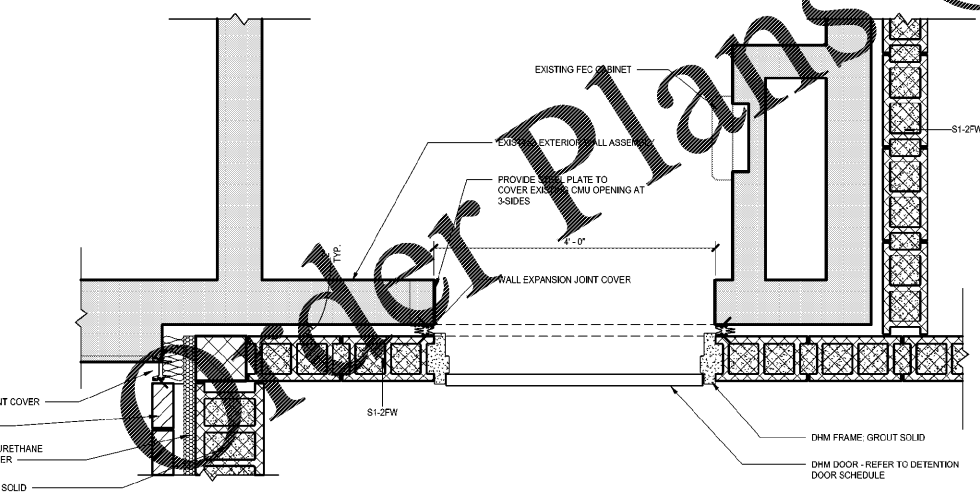
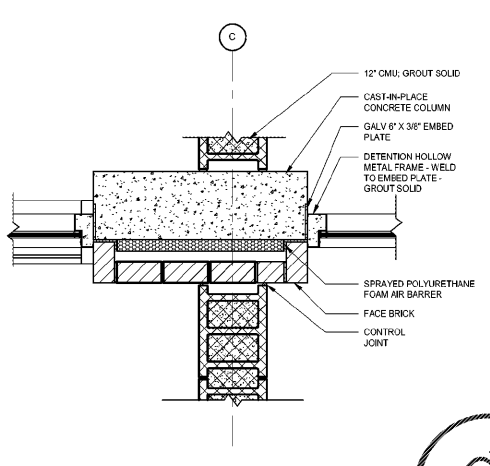
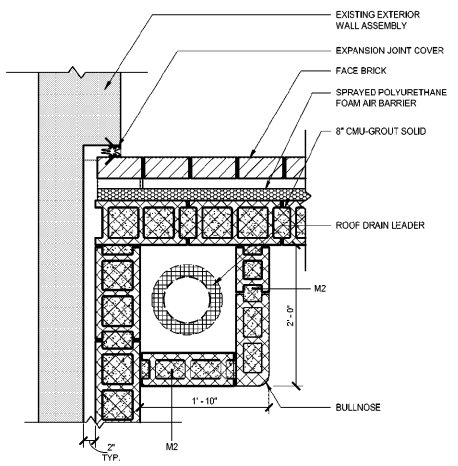
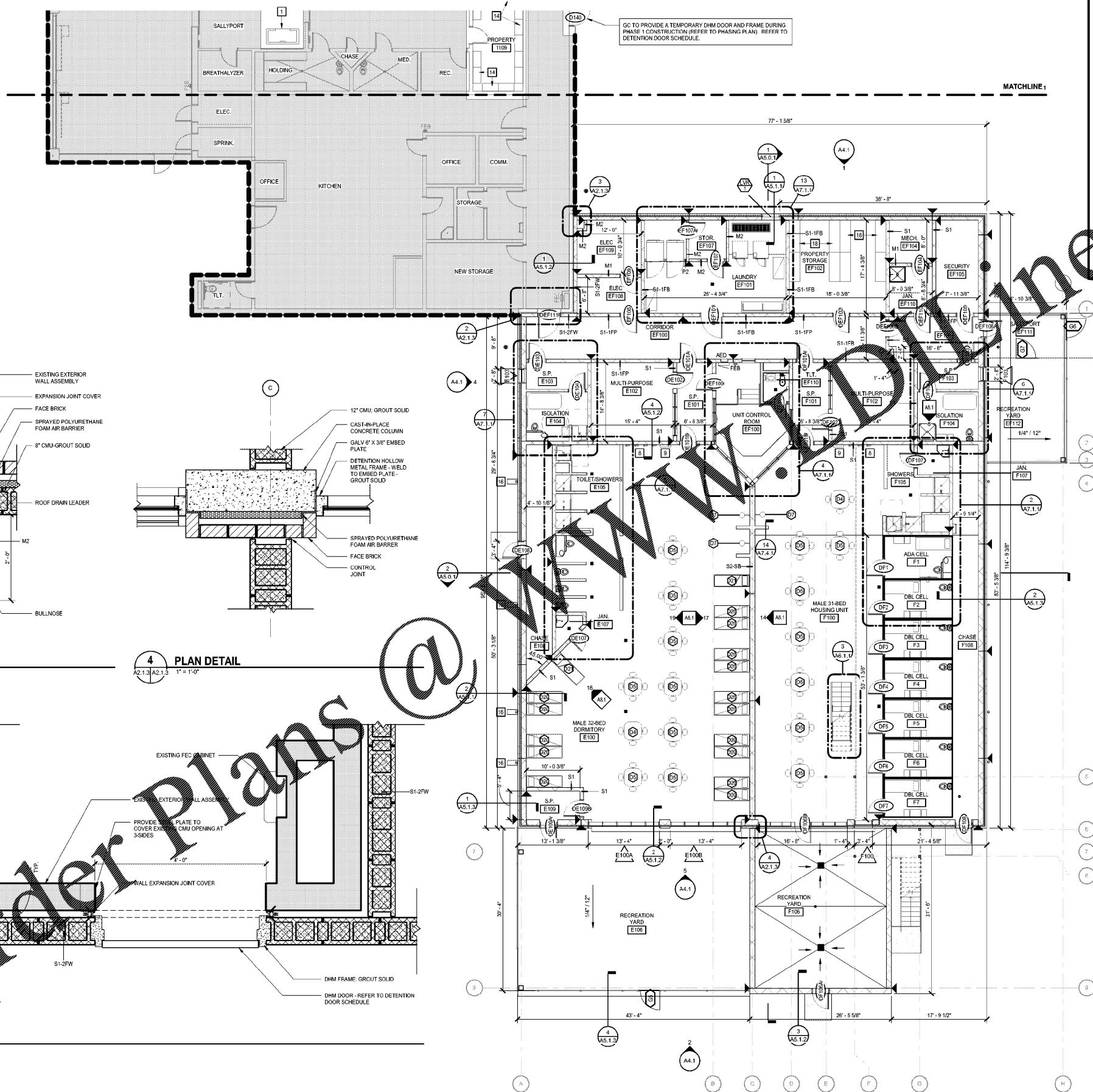
**FLOOR PLAN KEYNOTES**

REPRESENTED BY [ ]  
 APPLIES TO DRAWINGS A2.1.1 - A2.1.4

- 1 BODY SCANNER - N.I.C.
- 2 NEW STAINLESS STEEL COMBINATION TOILET/AVATORY UNITS
- 3 NEW STAINLESS STEEL PENAL PLUMBING FIXTURES
- 4 NEW SHOWER FIXTURES
- 5 RELOCATED TELEVISION MONITORS - COORDINATE WITH OWNER FOR FINAL MOUNTING HEIGHT AND LOCATION
- 6 GC TO PROVIDE WINDOW FILM
- 7 INMATE PHONE VENDOR TO COORDINATE WITH GC FOR FINAL MOUNTING HEIGHT, LOCATION
- 8 COMMISSARY KIOSK VENDOR TO COORDINATE WITH GC FOR MOUNTING HEIGHT, LOCATION
- 9 METAL ACCESS LADDER
- 10 PORTABLE EYEWASH STATION
- 11 RELOCATED VENDING MACHINE - OWNER
- 12 RELOCATED FIXED SEAT - GC
- 13 METAL SHELVING ANCHORED TO WALL - REFER TO DIVISION 10 SECTION METAL STORAGE SHELVING (POST AND BEAM), ALTERNATE #2.
- 14 SUBLE-TIER METAL SHELVING
- 15 CEILING TOILET ROOM BELOW
- 16 METAL PROPERTY STORAGE SHELVING WITH HANGER BAR FOR PROPERTY STORAGE BAGS. REFER TO DIVISION 10 SECTION METAL STORAGE SHELVING.

**MOSELEYARCHITECTS**

6210 ARDREY HILL ROAD • THE HUB AT WAVERLY, SUITE 425 • CHARLOTTE, NC 28277  
 PHONE (704) 540-3755 FAX (704) 540-3754  
 MOSELEYARCHITECTS.COM



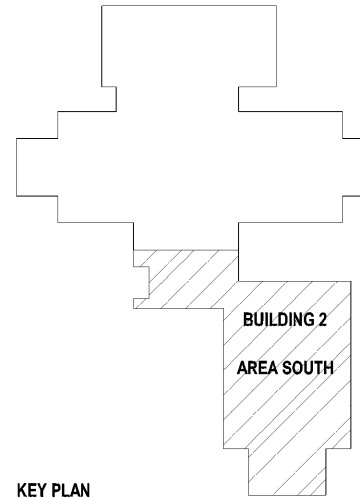
**3 PLAN DETAIL**  
 A2.1.3 A2.1.3 1" = 1'-0"

**4 PLAN DETAIL**  
 A2.1.3 A2.1.3 1" = 1'-0"

**2 PLAN DETAIL**  
 A2.1.3 A2.1.3 1" = 1'-0"



**FIRST FLOOR PLAN - AREA SOUTH**  
 1/8" = 1'-0"



**KEY PLAN**

**MARION COUNTY LEC**

591492  
 MARION COUNTY  
 2715 EAST HWY 76, MULLINS, SC 29574

PROJECT NO.	DATE	REVISIONS	DESCRIPTION
591492	OCTOBER 30, 2020		

FIRST FLOOR PLAN - SOUTH

**A2.1.3**

1/12/2020 8:10:18 AM