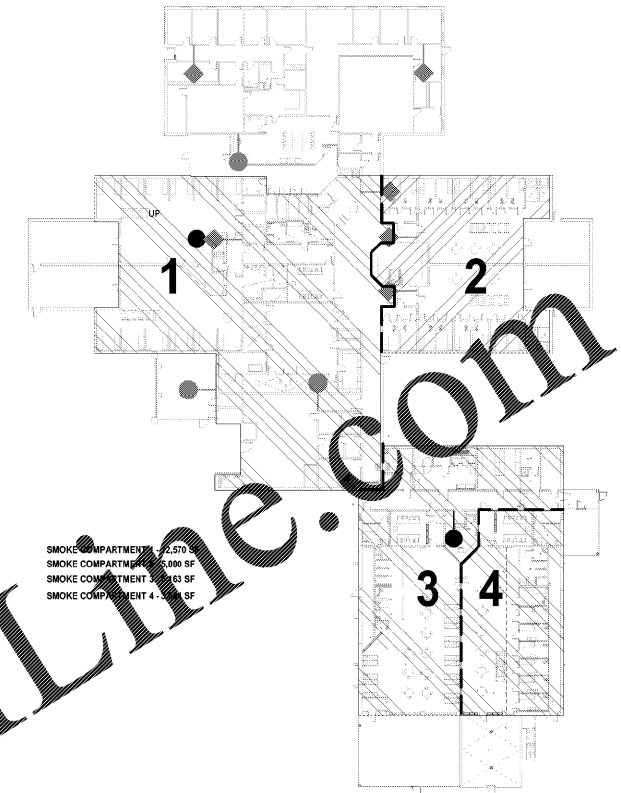
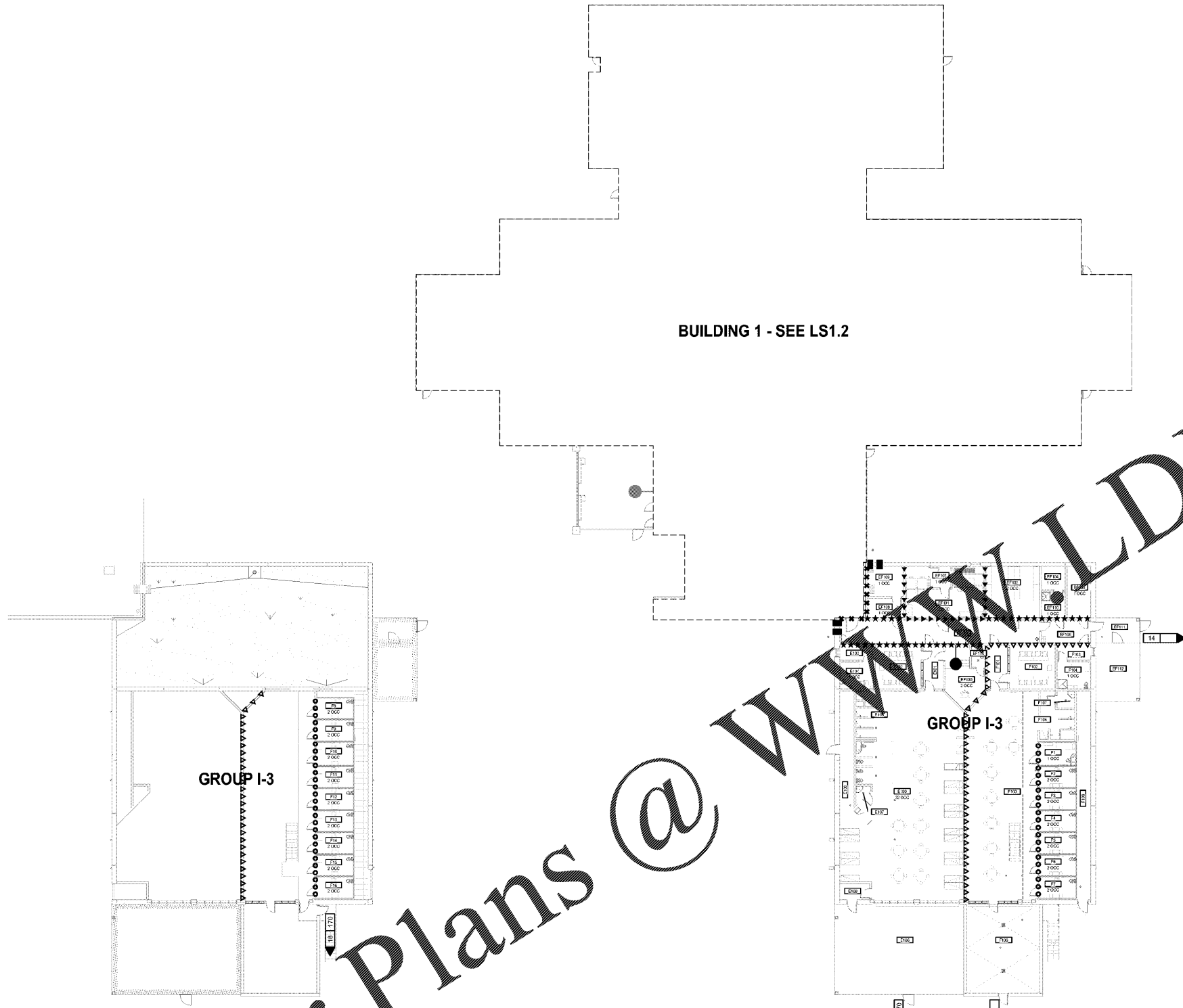


1/12/2020 8:02:47 AM



SMOKE COMPARTMENT PLAN

FIRE RATED ASSEMBLIES				
REPRESENTED BY $\frac{3}{16}$				
THE ASSEMBLIES REFERENCED ARE BASIS OF DESIGN. EQUIVALENT COMPATIBLE TESTED ASSEMBLIES WILL BE ACCEPTABLE IF APPROVED BY THE LAUJ				
MARK	FIRE RATING	APPLIES TO	REFERENCE	REMARKS
X1	1 HR	CMU WALLS, FIRE PARTITION	U905	-
X2	1HR	CMU WALLS, FIRE BARRIER	U905	-
X3	1HR	CMU WALLS, SMOKE BARRIER	U905	-
X4	2HR	CMU WALLS, FIRE WALL	U905	-

MEZZANINE LIFE SAFETY PLAN - BUILDING 1
1/16" = 1'-0"

LIFE SAFETY PLAN - BUILDING 2
1/16" = 1'-0"

OCCUPANCY SCHEDULE - BUILDING 2										
SPACE NUMBER	SPACE NAME	USE CLASSIFICATION	USED TO DETERMINE OCCUPANCY FACTOR ONLY	FLOOR AREA PER OCCUPANT	AREA	NET	TABULAR	OCCUPANCY LOAD	DESIGN	
				SF	GROSS			ACTUAL		
E100	MALE 32-BED DORMITORY	I3	INSTITUTIONAL SLEEPING AREA	120 SF	2169	*	19	32	32	
E104	ISOLATION	I3	INSTITUTIONAL SLEEPING AREA	120 SF	134	*	1	1	1	
EF100	UNIT CONTROL ROOM	I3	BUSINESS AREAS	100 SF	145	*	2	2	2	
EF101	LAUNDRY	I3	KITCHEN, COMMERCIAL	200 SF	337	*	2	2	2	
EF102	PROPERTY STORAGE	I3	ACCESSORY STORAGE & MECHANICAL EQUIPMENT ROOM	300 SF	313	*	2	2	2	
EF104	MECH	I3	ACCESSORY STORAGE & MECHANICAL EQUIPMENT ROOM	300 SF	64	*	1	1	1	
EF105	SECURITY	I3	ACCESSORY STORAGE & MECHANICAL EQUIPMENT ROOM	300 SF	138	*	1	1	1	
EF107	STOR.	I3	ACCESSORY STORAGE & MECHANICAL EQUIPMENT ROOM	300 SF	51	*	1	1	1	
EF108	ELEC	I3	ACCESSORY STORAGE & MECHANICAL EQUIPMENT ROOM	300 SF	80	*	1	1	1	
EF109	ELEC	I3	ACCESSORY STORAGE & MECHANICAL EQUIPMENT ROOM	300 SF	117	*	1	1	1	
F1	ADA CELL	I3	INSTITUTIONAL SLEEPING AREA	120 SF	96	*	1	1	1	
F2	DBL CELL	I3	INSTITUTIONAL SLEEPING AREA	120 SF	88	*	1	2	2	
F3	DBL CELL	I3	INSTITUTIONAL SLEEPING AREA	120 SF	88	*	1	2	2	
F4	DBL CELL	I3	INSTITUTIONAL SLEEPING AREA	120 SF	88	*	1	2	2	
F5	DBL CELL	I3	INSTITUTIONAL SLEEPING AREA	120 SF	88	*	1	2	2	
F6	DBL CELL	I3	INSTITUTIONAL SLEEPING AREA	120 SF	88	*	1	2	2	
F7	DBL CELL	I3	INSTITUTIONAL SLEEPING AREA	120 SF	88	*	1	2	2	
F8	DBL CELL	I3	INSTITUTIONAL SLEEPING AREA	120 SF	88	*	1	2	2	
F9	DBL CELL	I3	INSTITUTIONAL SLEEPING AREA	120 SF	88	*	1	2	2	
F10	DBL CELL	I3	INSTITUTIONAL SLEEPING AREA	120 SF	96	*	1	2	2	
F11	DBL CELL	I3	INSTITUTIONAL SLEEPING AREA	120 SF	88	*	1	2	2	
F12	DBL CELL	I3	INSTITUTIONAL SLEEPING AREA	120 SF	88	*	1	2	2	
F13	DBL CELL	I3	INSTITUTIONAL SLEEPING AREA	120 SF	88	*	1	2	2	
F14	DBL CELL	I3	INSTITUTIONAL SLEEPING AREA	120 SF	88	*	1	2	2	
F15	DBL CELL	I3	INSTITUTIONAL SLEEPING AREA	120 SF	88	*	1	2	2	
F16	DBL CELL	I3	INSTITUTIONAL SLEEPING AREA	120 SF	88	*	1	2	2	
F164	ISOLATION	I3	INSTITUTIONAL SLEEPING AREA	120 SF	103	*	1	1	1	
										76

LIFE SAFETY SYMBOL LEGEND				
APPLIES TO LS SERIES OF DRAWINGS ONLY				
DESIGNATOR MATRIX			SYMBOLS	
	WALL	BARRIER	PARTITION	RATED EXT WALL
4 HR FIRE	XXXXXX	XXXXXX	XXXXXX	XXXXXX
3 HR FIRE	XXXXXX	XXXXXX	XXXXXX	XXXXXX
2 HR FIRE	XXXXXX	XXXXXX	XXXXXX	XXXXXX
1 HR FIRE	XXXXXX	XXXXXX	XXXXXX	XXXXXX
1/2 HR FIRE	XXXXXX	XXXXXX	XXXXXX	XXXXXX
SMOKE	XXXXXX	XXXXXX	XXXXXX	XXXXXX
SMOKE-TIGHT	XXXXXX	XXXXXX	XXXXXX	XXXXXX
INCIDENTAL	XXXXXX	XXXXXX	XXXXXX	XXXXXX

1295 ROOM NUMBER
 788 1280 DIRECTION OF EGRESS EGRESS LOAD CAPACITY NUMBER OF OCCUPANTS
 DIRECTION OF EGRESS NUMBER OF OCCUPANTS EGRESS LOAD CAPACITY
 XXX'X" MAXIMUM TRAVEL DISTANCE
 XXX'X" COMMON PATH OF TRAVEL
 CPOT
 FIRE EXTINGUISHER CABINET
 FIRE EXTINGUISHER BRACKET

NOTES:
 1. WALL DESIGNATIONS ON THE LS SERIES OF DRAWINGS ARE FOR GRAPHICAL PURPOSES ONLY AND MAY NOT REPRESENT THE ACTUAL WALL/PARTITION CONSTRUCTION.
 2. REFER TO THE CONTRACT DOCUMENTS, INCLUDING THE LIFE SAFETY SYMBOLS LEGEND AND A1 AND A2 SERIES OF DRAWINGS, FOR ACTUAL WALL/PARTITION TYPES AND CONSTRUCTION REQUIREMENTS.
 3. RATING OF BEARING OR NON-BEARING WALLS ARE PER TABLE 601 AND SECTION 602.1 AND DO NOT REQUIRE PROTECTED OPENINGS.

1/2" RATING IN HOURS - (DFW) - DFW = DOUBLE FIRE WALL
 XXX'X"

Order Plans @ WWW.LDILINE.COM

MOSELEYARCHITECTS
 6210 ARDREY HELL ROAD • THE HUB AT WAVERLY, SUITE 425 • CHARLOTTE, NC 28277
 PHONE (704) 540-3755 FAX (704) 540-3754
 MOSELEYARCHITECTS.COM



MARION COUNTY LEC
 591492
 MARION COUNTY
 2715 EAST HWY 76, MULLINS, SC 29574

PROJECT NO.	DATE	REVISIONS
591492	OCTOBER 30, 2020	

LIFE SAFETY
 INFORMATION -
 BUILDING 2

LS1.3