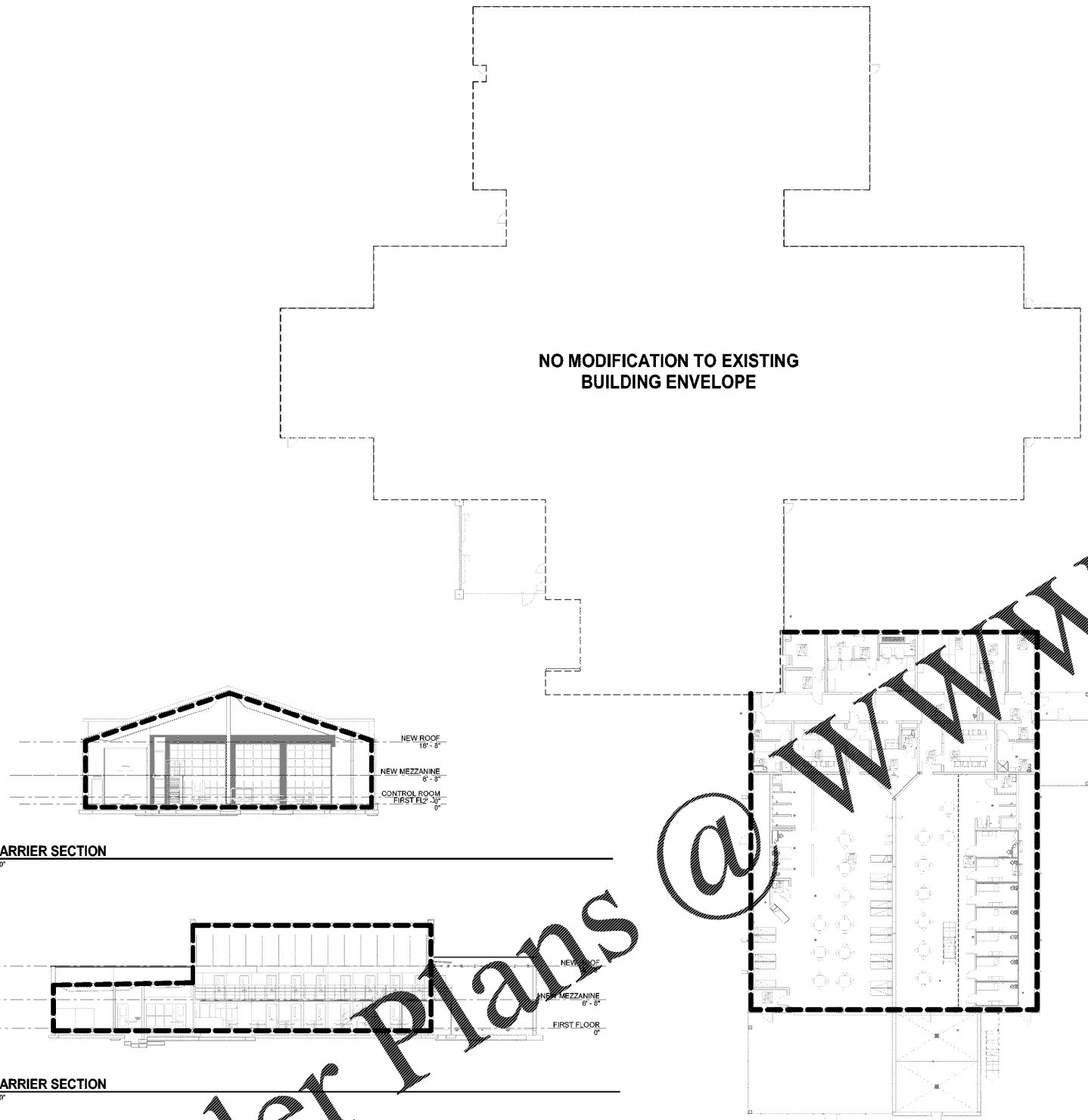


1/12/2020 8:00:44 AM



NO MODIFICATION TO EXISTING BUILDING ENVELOPE

AIR BARRIER SECTION
1/16" = 1'-0"

AIR BARRIER SECTION
1/16" = 1'-0"

AIR BARRIER PLAN - FIRST FLOOR
1/16" = 1'-0"

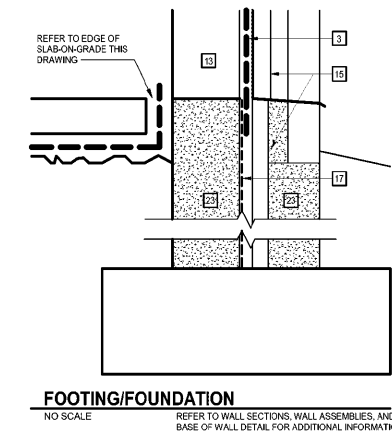
FLOOR PLAN/BUILDING SECTION LEGEND

---	PERIMETER OF AIR BARRIER SYSTEM AND EXTERIOR BUILDING ENVELOPE ENCLOSURE
-----	--

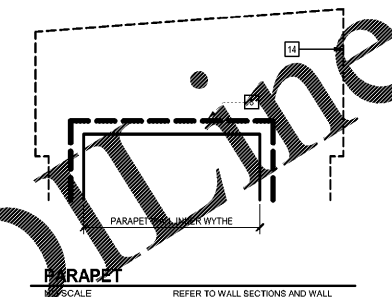
THIS DRAWING DEPICTS THE EXTENT OF THE AIR BARRIER MEMBRANE / MATERIAL / SYSTEM AND EXTERIOR BUILDING ENVELOPE ENCLOSURE. THE DRAWING IS CONCEPTUAL IN NATURE AND IS COMPLEMENTARY TO OTHER AIR BARRIER AND BUILDING ENVELOPE ENCLOSURE DETAILS, SECTIONS, ASSEMBLIES, AND SPECIFICATIONS.

THE UNDERSLAB VAPOR / AIR BARRIER MATERIAL IN ASSOCIATION WITH THE AIR BARRIER MEMBRANE / MATERIAL ON THE WALLS AND ROOF COMPOSE THE EXTERIOR BUILDING ENVELOPE ENCLOSURE TO PREVENT AIR INFILTRATION AND EXFILTRATION.

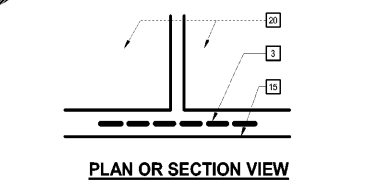
THE EXTERIOR BUILDING ENVELOPE ENCLOSURE MAY EXTEND WITHIN EXTERIOR WALLS WHERE THE INTERIOR AND EXTERIOR ENVIRONMENTS ARE NOT SEPARATED (E.G., MECHANICAL AND ELECTRICAL ROOMS, STAIRS, ELEVATORS, AND SIMILAR UNCONDITIONED SPACES). IN SUCH AREAS, MAINTAIN AIR BARRIER CONTINUITY AT THE PARTITIONS SEPARATING THEM FROM CONDITIONED SPACES, SEALING ALL PENETRATIONS, VOIDS, AND GAPS FROM FLOOR TO DECK ABOVE. WHERE SUCH AREAS HAVE PAINTED MASONRY PARTITIONS WITH ADJACENT, SUSPENDED CEILINGS, CONTINUE PAINT FINISH ABOVE CEILINGS FULL HEIGHT TO DECK.



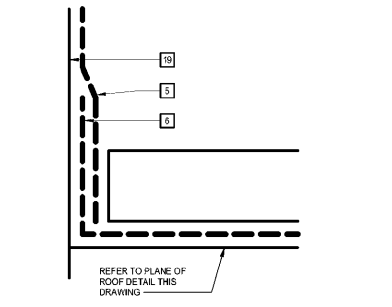
FOOTING/FOUNDATION
NO SCALE
REFER TO WALL SECTIONS, WALL ASSEMBLIES, AND BASE OF WALL DETAIL FOR ADDITIONAL INFORMATION



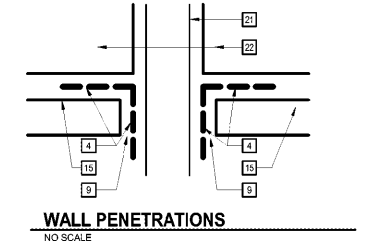
PARAPET
NO SCALE
REFER TO WALL SECTIONS AND WALL ASSEMBLIES FOR ADDITIONAL INFORMATION



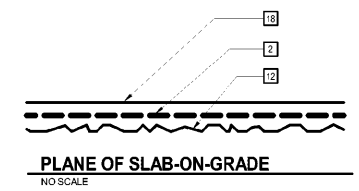
DISSIMILAR MATERIALS
NO SCALE
REFER TO PLANE OF ROOF DETAIL THIS DRAWING



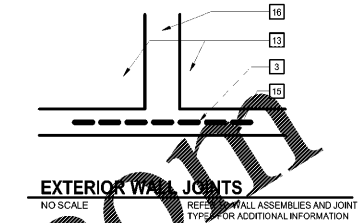
ROOF TO WALL
NO SCALE
REFER TO ROOF AND WALL ASSEMBLIES FOR ADDITIONAL INFORMATION



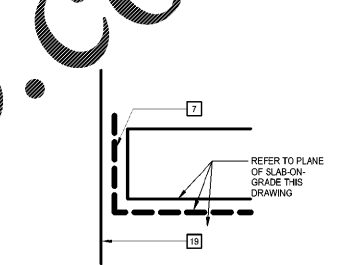
WALL PENETRATIONS
NO SCALE



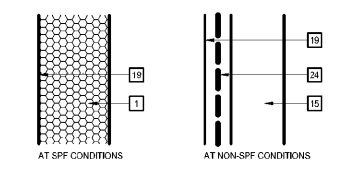
PLANE OF SLAB-ON-GRADE
NO SCALE



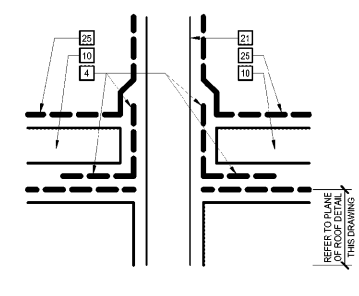
EXTERIOR WALL JOINTS
NO SCALE
REFER TO WALL ASSEMBLIES AND JOINT TYPES FOR ADDITIONAL INFORMATION



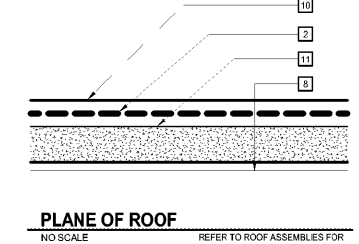
EDGE OF SLAB-ON-GRADE
NO SCALE
REFER TO SLAB-ON-GRADE BOUNDARY CONDITIONS FOR ADDITIONAL INFORMATION



PLANE OF EXTERIOR WALL
NO SCALE
REFER TO WALL ASSEMBLIES FOR ADDITIONAL INFORMATION



ROOF PENETRATIONS
NO SCALE
REFER TO ROOF ASSEMBLIES FOR ADDITIONAL INFORMATION



PLANE OF ROOF
NO SCALE
REFER TO ROOF ASSEMBLIES FOR ADDITIONAL INFORMATION

KEYNOTES
APPLIES TO THIS DRAWING REPRESENTED BY [Symbol]

1. SPF AIR BARRIER	8. ROOF DECK	17. DAMPROOFING
2. VAPOR/AIR BARRIER MEMBRANE	9. FULLY SEAL BETWEEN INSULATION AND PENETRATION ITEM	18. SLAB-ON-GRADE
3. AIR BARRIER TRANSITION STRIP	10. ROOF INSULATION	19. FACE OF WALL SHEATHING OR VERTICAL ELEMENT
4. AIR BARRIER TRANSITION STRIP AROUND ENTIRE PENETRATION	11. SUBSTRATE BOARD	20. DISSIMILAR MATERIALS
5. AIR BARRIER MEMBRANE - LAP AND CONTINUE UP AND OVER PARAPET	12. POROUS FILL	21. PENETRATING ITEM
6. VAPOR/AIR BARRIER MEMBRANE - TURN UP, PROVIDE CONTINUOUS AIR TIGHT SEAL AND ADHERE TO WALL AND TERMINATE PER MFR INSTRUCTIONS	13. EXTERIOR WALL INNER WYTHE	22. MATERIAL OR WALL BEING PENETRATED
7. VAPOR/AIR BARRIER MEMBRANE - EXTEND UP FACE OF WALL, PROVIDES CONTINUOUS AIR-TIGHT SEAL AND ADHERE TO WALL, THEN CUT OFF FLUSH WITH TOP OF SLAB	14. COPING - OUTLINE MAY VARY	23. GROUTED SOLID MASONRY - SERVES AS AIR BARRIER
	15. CAVITY INSULATION	24. AIR BARRIER SYSTEM
	16. JOINT WIDTH VARIES	25. ROOF MEMBRANE

MOSELEYARCHITECTS
6210 ARDREY HILL ROAD - THE HUB AT WAVERLY, SUITE 425 - CHARLOTTE, NC 28277
PHONE (704) 540-3750 FAX (704) 540-3754
MOSELEYARCHITECTS.COM



MARION COUNTY LEC
591492
MARION COUNTY
2715 EAST HWY 76, MULLINS, SC 29574

PROJECT NO: 591492
DATE: OCTOBER 30, 2020

DATE	REVISIONS	DESCRIPTION

GENERAL INFORMATION - AIR BARRIER

G2.1