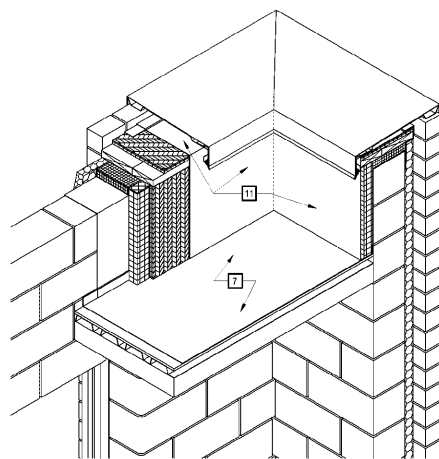
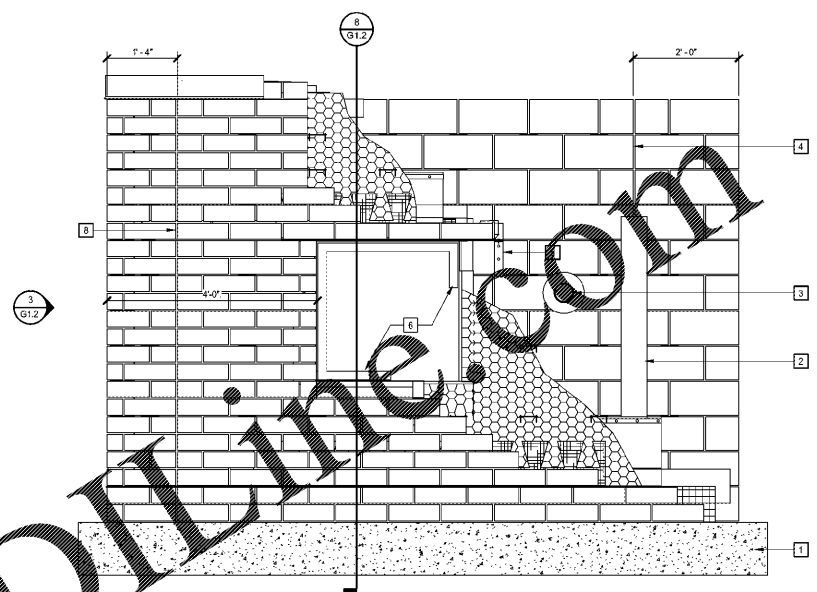


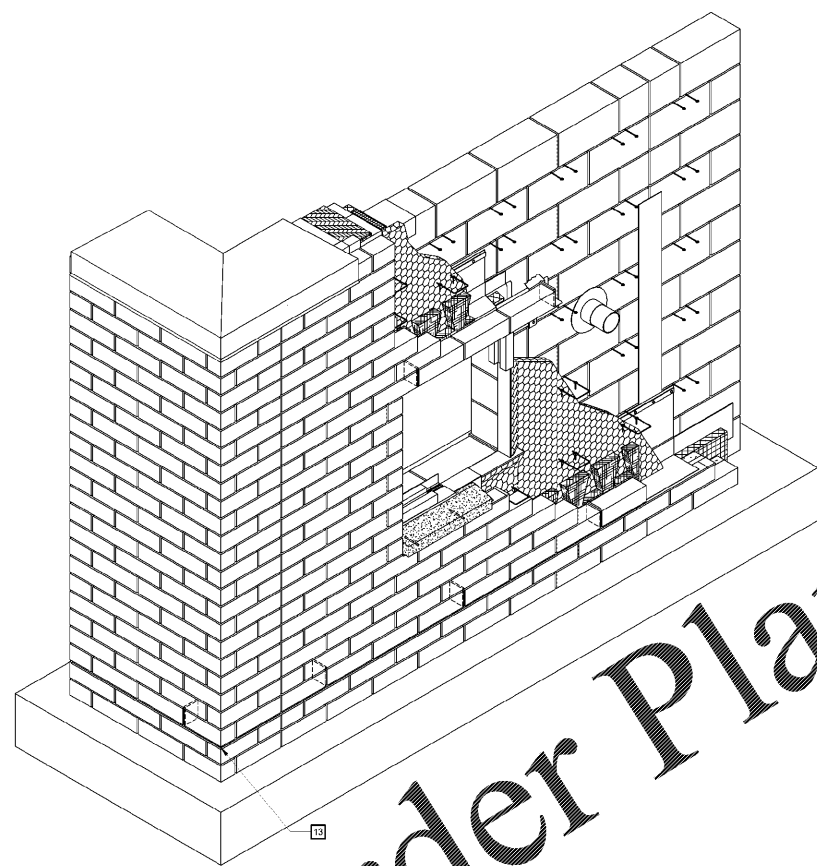
1/12/2020 8:00:39 AM



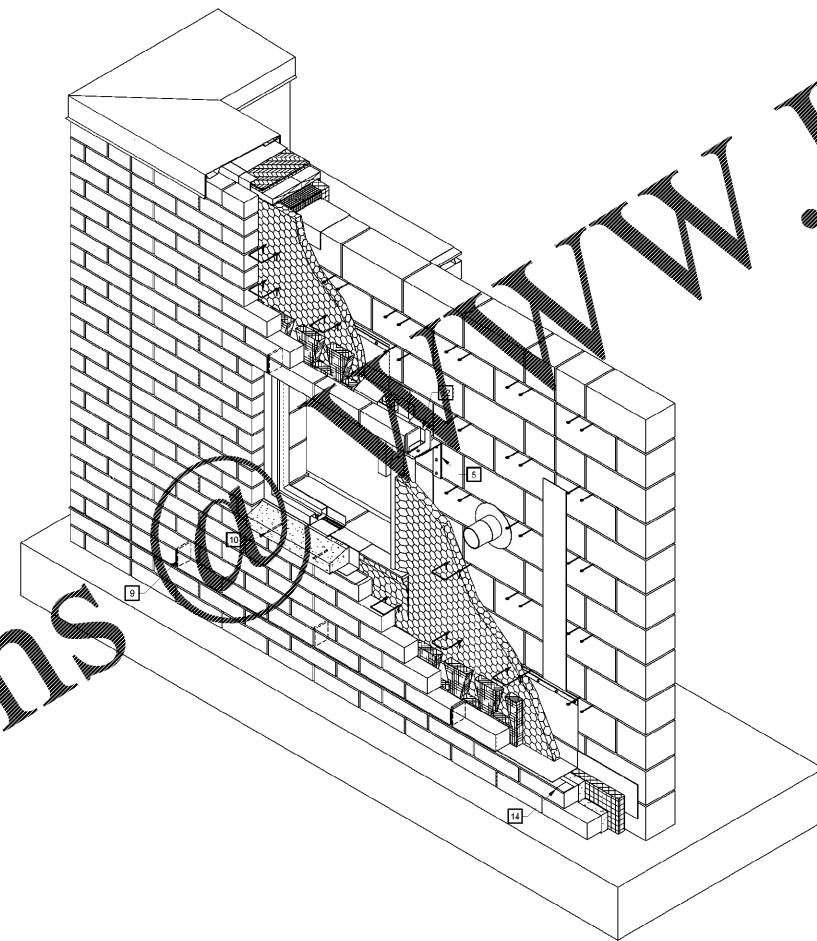
INTEGRATED MOCKUP ISOMETRIC
NO SCALE



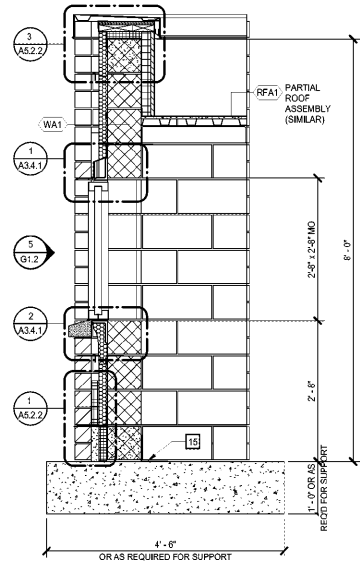
INTEGRATED MOCKUP FRONT ELEVATION
3/4" = 1'-0"



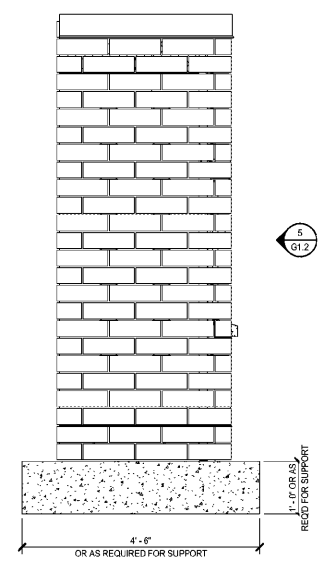
INTEGRATED MOCKUP ISOMETRIC
NO SCALE



INTEGRATED MOCKUP ISOMETRIC
NO SCALE



INTEGRATED MOCKUP SECTION
3/4" = 1'-0"



INTEGRATED MOCKUP SIDE ELEVATION
3/4" = 1'-0"

Order Plans

KEYNOTES

APPLIES TO DRAWING G1.2 ONLY
REPRESENTED BY [X]

- | | |
|--|---|
| 1. CONCRETE PAD - SIZE AS REQUIRED TO PROVIDE SUPPORT FOR ENTIRE INTEGRATED MOCKUP PANEL. PROVIDE SUPPLEMENTAL DIAGONAL BRACING IF REQUIRED TO SUPPORT ENTIRE PANEL. | 8. JOINT IN VENER ONLY W/ SEALANT SELECTED BY ARCHITECT |
| 2. TRANSITION MEMBRANE OVER JOINT | 9. CELL VENT WEEPS |
| 3. 4" DIA PIPE PENETRATION W/ TRANSITION MEMBRANE SURROUND | 10. TUBE WEEPS UNDER SILL |
| 4. JOINT IN CMU ONLY. PREP FOR TRANSITION MEMBRANE ON EXTERIOR SIDE W/ SEALANT SELECTED BY ARCHITECT ON INTERIOR SIDE. | 11. PROVIDE LAP |
| 5. PROVIDE GALVANIZED OR STAINLESS STEEL BRACKET AND SECUREMENT AS REQUIRED TO SUPPORT END OF LOOSE STEEL ANGLE LINTEL | 12. FORM END DAM AT HEAD/JAMB |
| 6. CUT FRAME AS INDICATED - GLAZING NOT REQUIRED | 13. CLIP/CUT DRIP EDGE TO FORM RADIUS AROUND CORNER - AVOID POINTED/SHARP EDGES |
| 7. 2'-0" W x 4'-0" L STEEL DECK ON STEEL AND BEARING ANGLES BOLTED TO SOLID CMU (SIMILAR TO PROJECT REQUIREMENTS) WITH ROOF SUBSTRATE BOARD AND STEPPED BACK SHEET OF AIR BARRIER MEMBRANE | 14. 1'-0" H x 4'-0" L VAPOR/AIR BARRIER UNDERSLAB MEMBRANE. SPAN JOINT IN CMU. DEMONSTRATE ADHERENCE TO CMU AND CUT-OFF METHOD. |

EXTERIOR INTEGRATED MOCKUP PANEL DRAWINGS ARE CONCEPTUAL IN NATURE AND COMPLEMENT OTHER RELATED DRAWINGS AND DETAILS. USE EXTERIOR INTEGRATED MOCKUP PANEL TO DEMONSTRATE AN UNDERSTANDING OF THE MATERIAL INTEGRATION, SEQUENCING, AND PROCESSES REQUIRED TO COORDINATE THESE COMPONENTS AND BUILDING EXTERIOR WALL ASSEMBLY.

REFER TO RELATED AND REFERENCED DETAILS, SECTIONS, WALL ASSEMBLIES, AND SPECIFICATIONS FOR ADDITIONAL INFORMATION.

CONSTRUCT IN "STEPPED BACK" METHOD AS SHOWN. LEAVE AND PROTECT INDICATED MATERIALS EXPOSED UNTIL PANEL IS DEMOLISHED.

MOSELEYARCHITECTS



6210 ARDREY HELL ROAD • THE HUB AT WAVERLY, SUITE 425 • CHARLOTTE, NC 28277
PHONE (704) 540-3755 FAX (704) 540-3754
MOSELEYARCHITECTS.COM

MARION COUNTY LEC

591492
MARION COUNTY
2715 EAST HWY 76, MULLINS, SC 29574

PROJECT NO:	591492
DATE:	OCTOBER 30, 2020
REVISIONS	
DATE	DESCRIPTION

INTEGRATED MOCKUP PANEL

G1.2