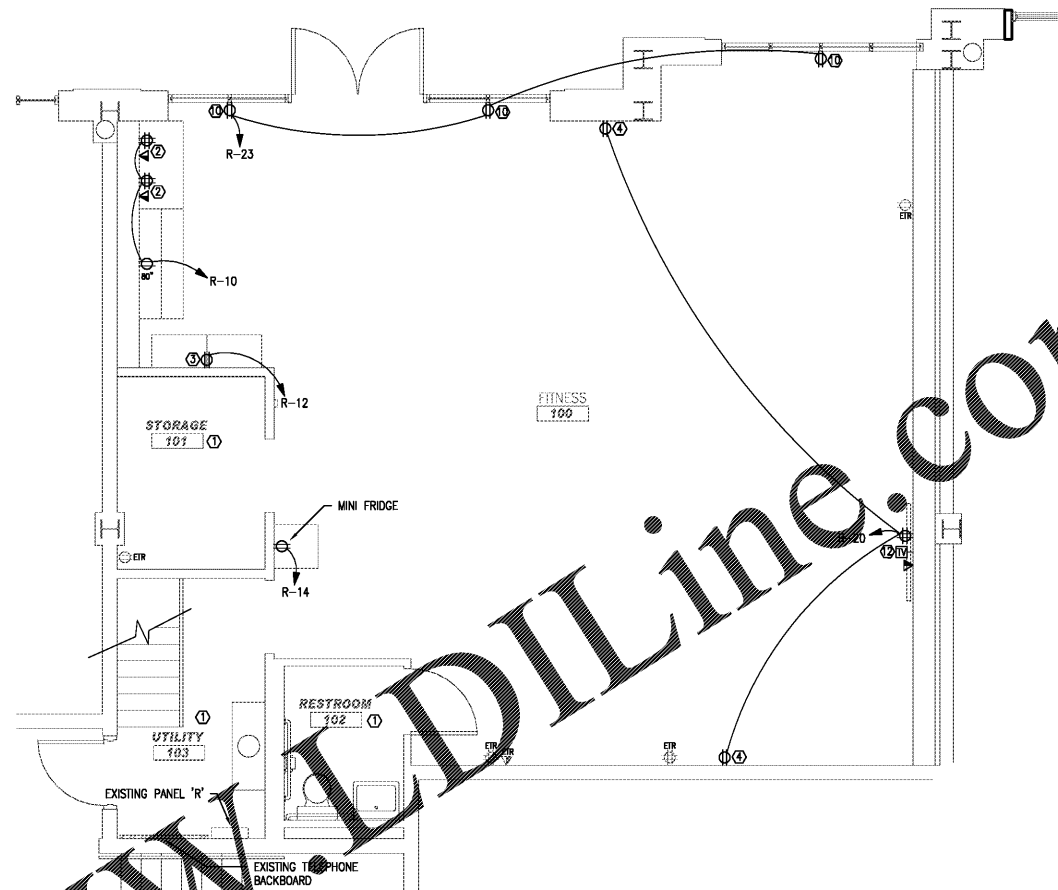
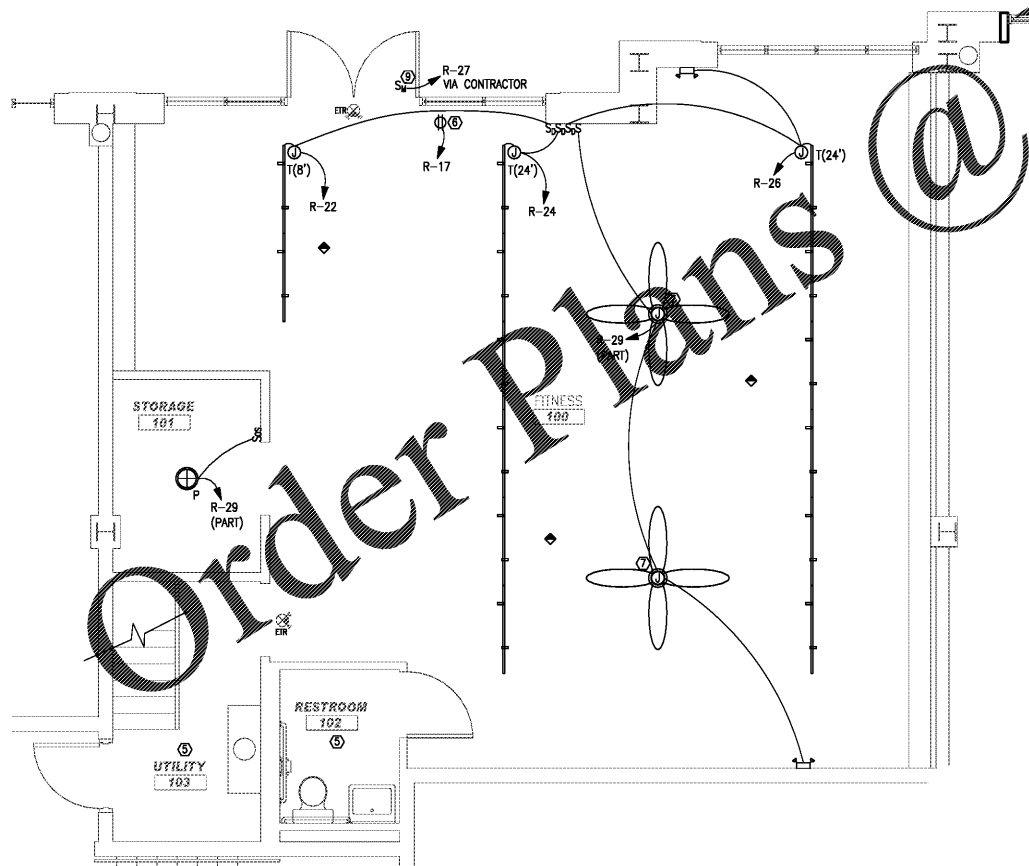


KEYNOTES:

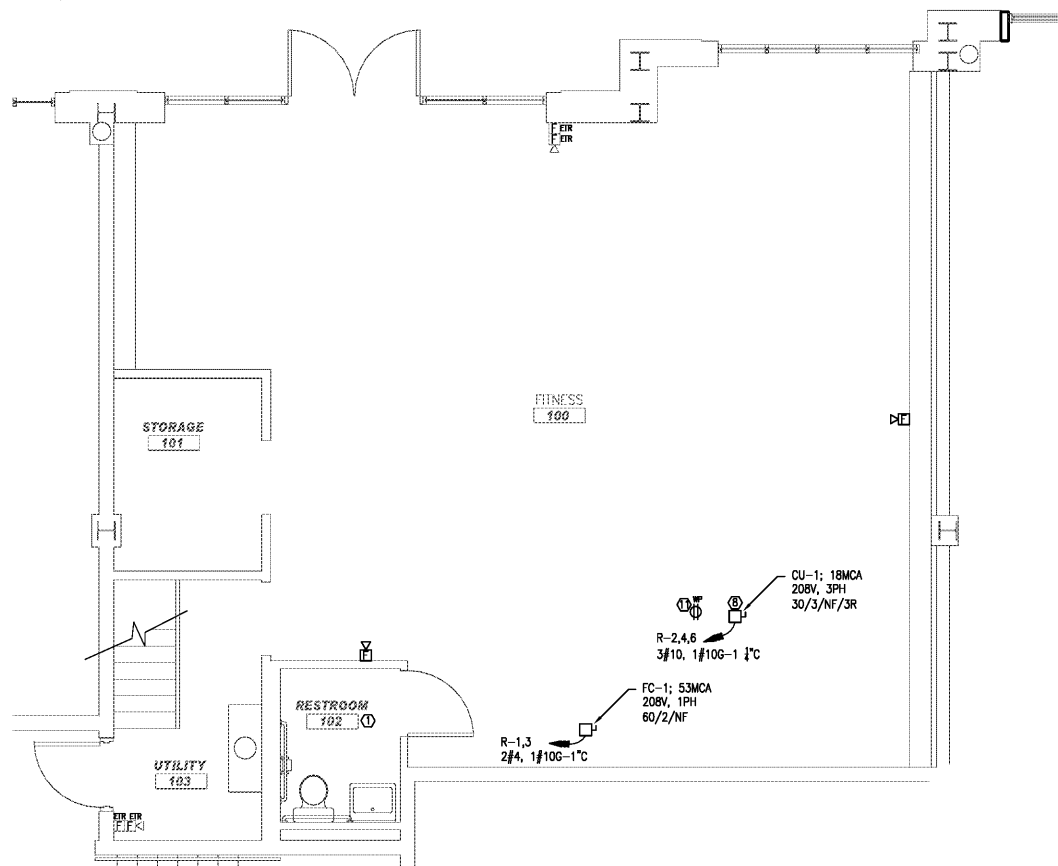
- ① EXISTING ELECTRICAL DEVICES TO REMAIN, THIS ROOM.
- ② COMPUTER STATION PROVIDED BY OWNER AND INSTALLED BY CONTRACTOR.
- ③ RETAIL DISPLAY PROVIDED BY OWNER AND INSTALLED BY CONTRACTOR.
- ④ OUTLET DEDICATED FOR TV PULSE ANTENNA.
- ⑤ EXISTING LIGHTING DEVICES AND CIRCUITING TO REMAIN, THIS ROOM.
- ⑥ CEILING OUTLET DEDICATED FOR "OPEN SIGN" LIGHT. VERIFY LOCATION WITH CONTRACTOR.
- ⑦ JUNCTION BOX DEDICATED TO CEILING FAN DEVICE. CEILING FAN TO BE DETERMINED BY OWNER.
- ⑧ CONDENSING UNIT LOCATED ON ROOF. COORDINATE LOCATION WITH MECHANICAL.
- ⑨ BUILDING SIGN, 120V, 1PH. COORDINATE MOUNTING HEIGHT WITH SIGN PROVIDER.
- ⑩ MOUNT RECEPTACLE 6" ABOVE WINDOW.
- ⑪ PROVIDE WEATHER PROOF RECEPTACLE ON ROOF IF ONE IS NOT PRESENT WITHIN 25' PER NED. CONNECT TO NEAREST AVAILABLE 120V CIRCUIT.
- ⑫ COORDINATE MOUNTING HEIGHT OF CATV DEVICE AND RECEPTABLES WITH ARCHITECT.



1 POWER PLAN
E1.00 SCALE: 1/4" = 1'-0"



2 LIGHTING PLAN
E1.00 SCALE: 1/4" = 1'-0"



3 SYSTEMS PLAN
E1.00 SCALE: 1/4" = 1'-0"

E1.00
ELECTRICAL PLANS
1/4" = 1'-0"

ISSUES	
NO.	DESCRIPTION

11.25.20
PERMIT SET

9Round - Atlanta
1745 Peachtree Road NW, Suite L
Atlanta, GA 30309
Project Number: 739.00

ISSUED FOR CONSTRUCTION

STRUCTURAL

M.E.P. & F.P.
WestSide Engineering
5525 Interstate North Parkway
Suite 200
Atlanta, GA 30328
Phone: 404-242-6240
WE# 20238

CIVIL

