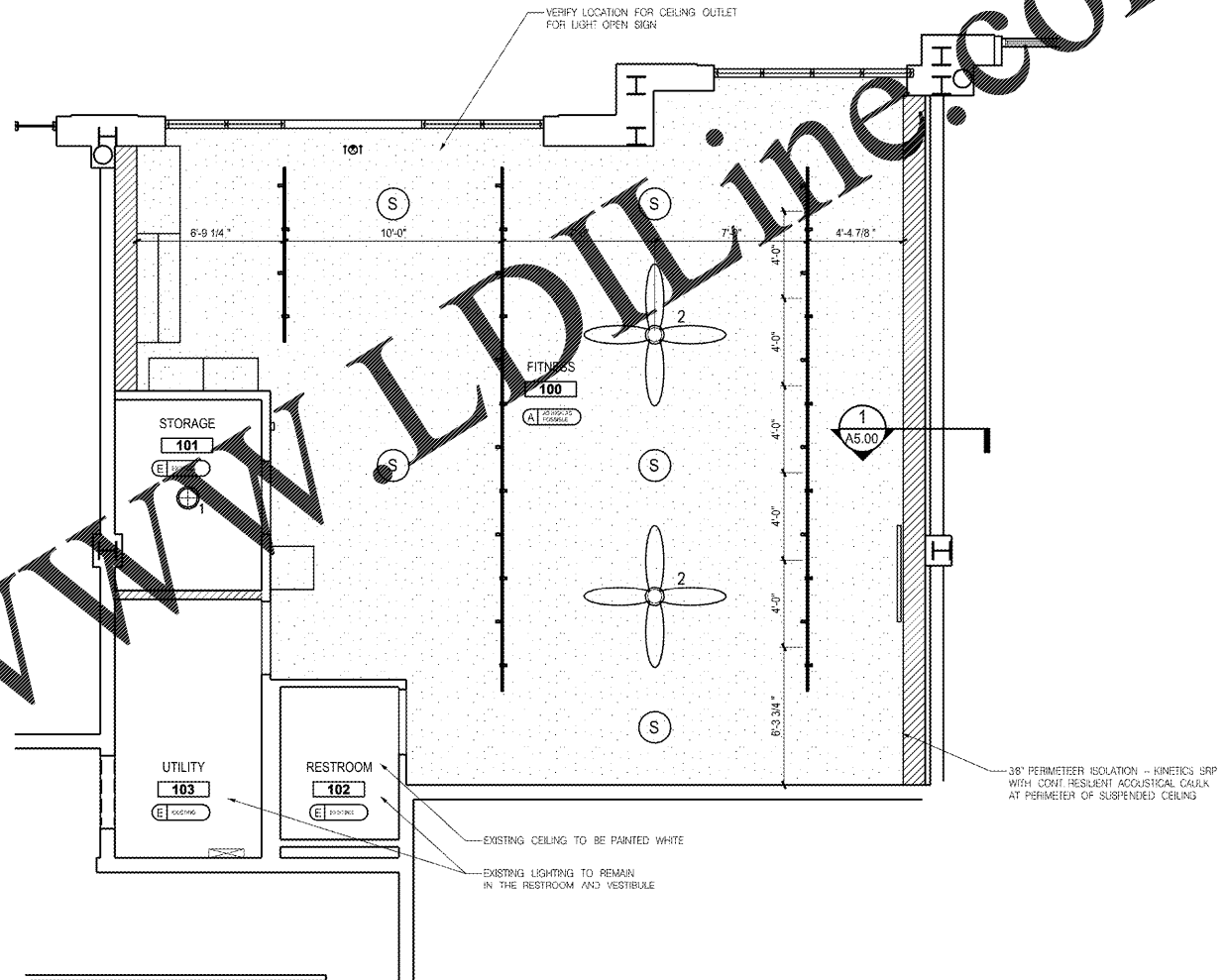


Order Plans @

GENERAL NOTES		
ALL DIMENSIONS ARE FROM FACE OF FINISHED WALL AND CEILING HEIGHTS SHOWN ARE FROM GROUND FLOOR OF EXIST. BUILDING, UNLESS NOTED OTHERWISE		
WHERE MULTIPLE SWITCHES OCCUR (SWITCHES, DIMMERS, OR BOTH), GANG GROUPS OF SWITCHES IN SAME BOX WITH A SINGLE COVERPLATE.		
ALL SWITCHES, DIMMERS, FAN CONTROLS AND THERMOSTATS TO BE LOCATED 48" AFF TO CENTER LINE OF DEVICE AND INSTALLED LEVEL AND ALIGNED, UNLESS NOTED OTHERWISE.		
CONTRACTOR TO MAINTAIN PLASTIC COVERS OVER FIXTURES DURING CONSTRUCTION TO AVOID ACCUMULATION OF DIRT AND FINGERPRINTS ON LENS SURFACE.		
ALL THERMOSTAT LOCATIONS TO BE APPROVED BY ARCHITECT PRIOR TO INSTALLATION.		
CEILING TYPES		
TYPE	SYMBOL	DESCRIPTION
A		5/8" PTD. GYP. CEILING ON ACOUSTICAL SUSPENSION SYSTEM THERMAL RECOVERY SYSTEMS CONTACT BEN CHAPMAN
E		EXISTING CEILING TO REMAIN - TO BE PAINTED WHITE
LIGHTING LEGEND		
SYMBOL	DESCRIPTION	
	MFR: - WAC LIGHTING TYPE: SURFACE MOUNT MODEL: FM-4615-30-TT NOTES: -	
	MFR: - TYPE: BLACK CEILING FAN MODEL: - NOTES: TO BE SELECTED BY OWNER	
	MFR: - TYPE: TRACK LIGHTING USING 65 WATT LED AND BLACK FINISH MODEL: - NOTES: TO BE SELECTED BY OWNER	
	MFR: - TYPE: PTG AUDIO SYSTEM MODEL: - NOTES: TO BE SELECTED BY OWNER	
	MFR: - TYPE: EXIT SIGN - SEE ELECTRICAL MODEL: - NOTES: -	



1 RCP  
A1.01 SCALE: 1/4" = 1'-0"

ISSUES	
11.25.20	PERMIT SET

**9Round - Atlanta**  
1745 Peachtree Road NW, Suite L  
Atlanta, GA 30309

Project Number: 739.00  
ISSUED FOR CONSTRUCTION

**STRUCTURAL**

**M.E.P. & F.P.**  
WestSide Engineering  
5525 Interstate North Parkway  
Suite 200  
Atlanta, GA 30328  
Phone: 404-242-6240

**CIVIL**



A1.01  
REFLECTED CEILING PLAN  
1/4" = 1'-0"