

**LEGEND**

- LIGHTING AND POWER**
- CONDUIT RUN CONCEALED ABOVE CEILING OR IN WALL CONTAINING 3 NUMBER 12 CONDUCTORS UNLESS SHOWN OTHERWISE. HASH MARKS, IF SHOWN, INDICATE QUANTITY OF NUMBER 12 CONDUCTORS. WHERE DRAWING SPACE PROHIBITS HASH MARKS BEING SHOWN REFER TO CIRCUIT NUMBERS AND PROVIDE REQUIRED NUMBER OF CONDUCTORS PER CIRCUIT TYPE.
  - CONDUIT RUN CONCEALED IN OR BELOW FLOOR SLAB, OR UNDERGROUND.
  - HOMERUN TO PANELBOARD, LETTER OR LETTERS INDICATE PANELBOARDS, NUMBERS INDICATE CIRCUIT NUMBERS.
  - A-Z, A-B
  - EXPOSED CONDUIT RUN.
  - JUNCTION BOX, FLUSH WALL MOUNTED.
  - JUNCTION BOX LOCATED ABOVE CEILING OR BELOW GRADE.
  - DUPLEX CONVENIENCE OUTLET, GFI TYPE, 15' TO CENTER LINE UNLESS OTHERWISE NOTED. "WP" WHERE SHOWN INDICATES WEATHER-RESISTANT DEVICE WITH METAL IN-USE WEATHERPROOF COVER.
  - DUPLEX CONVENIENCE OUTLET, TAMPER RESISTANT (TR) GFI TYPE, MOUNTED ABOVE COUNTER AT +48" TO CENTERLINE OF RECEPTACLE UNLESS NOTED OTHERWISE.
  - TAMPER RESISTANT RECEPTACLE, +18" ABOVE FINISHED FLOOR TO CENTERLINE UNLESS NOTED OTHERWISE.
  - PANELBOARD, SEE SCHEDULE.
  - DISCONNECT SWITCH, SIZE AS NOTED ON DRAWINGS, FUSED PER MANUFACTURER'S NAME PLATE DATA OF EQUIPMENT SERVED.
  - SINGLE OR DOUBLE POLE, MINIMUM 30 AMP MOTOR RATED ENCLOSED SWITCH WITH "LOCK-OUT" OPTION, MOUNTED NEAR EQUIPMENT BEING SERVED.
  - FIRE ALARM SYSTEM**
  - REPLACE EXISTING DUCT SMOKE DETECTOR WITH NEW. LOCATE AT IN/AC UNIT OR UP STREAM OF SMOKE DAMPER. COORDINATE EXACT LOCATION WITH MECHANICAL CONTRACTOR. VERIFY THAT THE NEW DUCT DETECTOR IS PROGRAMMED BACK INTO THE EXISTING FIRE ALARM SYSTEM.



**2.K.M.**  
ARCHITECTS, INC.  
529 GREENE ST. AUGUSTA, GA 30901  
(706) 736 3333 - FAX (706) 736 7100

REGISTERED PROFESSIONAL ENGINEER  
MICHAEL C. MONROE  
12-07-20

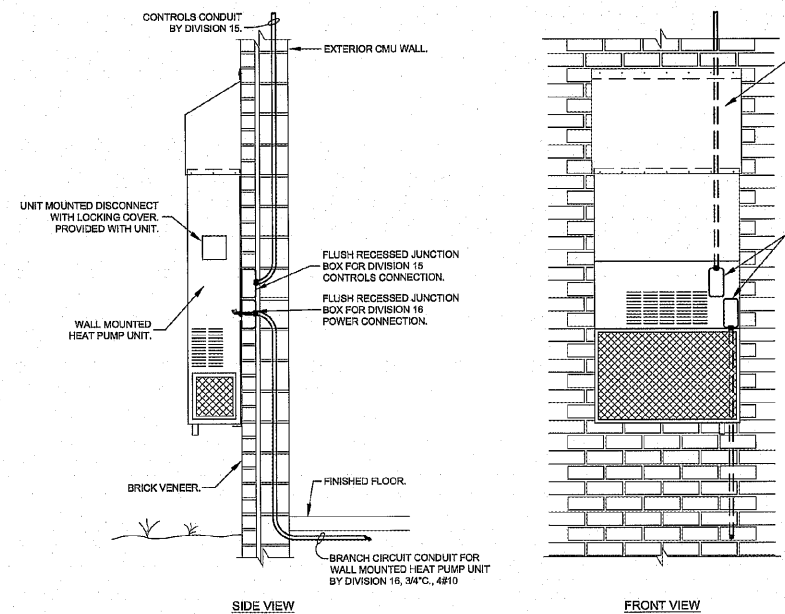
This document is the property of 2KM Architects, Inc. The unauthorized reproduction, copying, or alteration of this document is strictly prohibited and any infringement thereon may be subject to legal action. Copyright © 2020, 2KM Architects, Inc.

**DEMOLITION NOTES:**

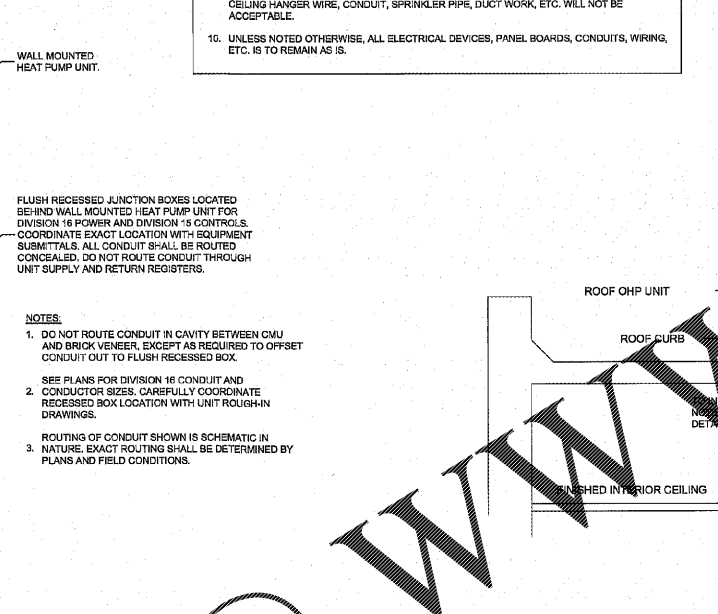
- THE CONTRACTOR SHALL FIELD VERIFY EXACT ROUTINGS OF EXISTING RACEWAYS BEFORE STARTING ANY WORK AND NOTIFY THE ARCHITECT OF ANY KNOWN DISCREPANCIES.
- THE CONTRACTOR SHALL UTILIZE AS MUCH OF THE EXISTING OUTLETS AND RACEWAYS AS POSSIBLE TO RECONNECT EXISTING AND NEW CIRCUITS.
- THE CONTRACTOR SHALL REMOVE EXISTING CONDUCTORS AND INSTALL NEW CONDUCTORS AS SHOWN OR AS REQUIRED TO COMPLETE REVISED CIRCUITS AND TO CONFORM TO N.E.C.
- ALL EXISTING EQUIPMENT REMOVED FROM SERVICE AND NOT INTENDED FOR REUSE SHALL REMAIN THE PROPERTY OF OWNER AND SHALL BE STORED OR DISPOSED OF AS DIRECTED BY THE OWNER.
- MAINTAIN SERVICE TO ALL EXISTING CIRCUITS THAT ARE NOT SCHEDULED FOR REMOVAL.
- PROVIDE BLANK COVERS ON ALL JUNCTION BOXES AND OUTLET BOXES NOT INTENDED FOR REUSE.
- EXISTING CEILINGS DISTURBED OR DISFIGURED BY THE ELECTRICAL RENOVATIONS SHALL BE PATCHED, MENDED OR REPLACED BY TRADES ACTIVELY PARTICIPATING IN THIS TYPE OF WORK. RESPONSIBILITY FOR REPAIRS SHALL BE COORDINATED BETWEEN GENERAL CONTRACTOR AND ELECTRICAL SUBCONTRACTOR.
- EXISTING EQUIPMENT SHOWN ON ARCHITECTURAL, MECHANICAL AND ELECTRICAL DRAWINGS THAT WILL REMAIN SHALL HAVE SERVICE MAINTAINED.
- CONTRACTOR SHALL SURVEY EXISTING SPACES WHERE CEILINGS ARE BEING REMOVED FOR ABANDONED SYSTEMS CABLING CURRENTLY LOCATED ABOVE CEILING. CONTRACTOR TO VERIFY IF CABLING IS OPERABLE AND IN USE. ANY CABLE NOT IN USE SHALL BE REMOVED IN ITS ENTIRETY. ANY CABLE IN USE SHALL REMAIN AND SHALL BE SUPPORTED ACCORDINGLY TO MEET NEC. CONTRACTOR TO PROVIDE HANGERS AND LHOOKS TO SUPPORT EXPOSED CABLING. ALL CABLING SHALL BE BUNDLED TOGETHER WITH PLENUM RATED THE WRAPS AND SUPPORTED FROM STRUCTURE ABOVE. SUPPORT OF CABLING FROM CEILING HANGER WIRE, CONDUIT, SPRINKLER PIPE, DUCT WORK, ETC. WILL NOT BE ACCEPTABLE.
- UNLESS NOTED OTHERWISE, ALL ELECTRICAL DEVICES, PANEL BOARDS, CONDUITS, WIRING, ETC. IS TO REMAIN AS IS.

**GENERAL NOTES:**

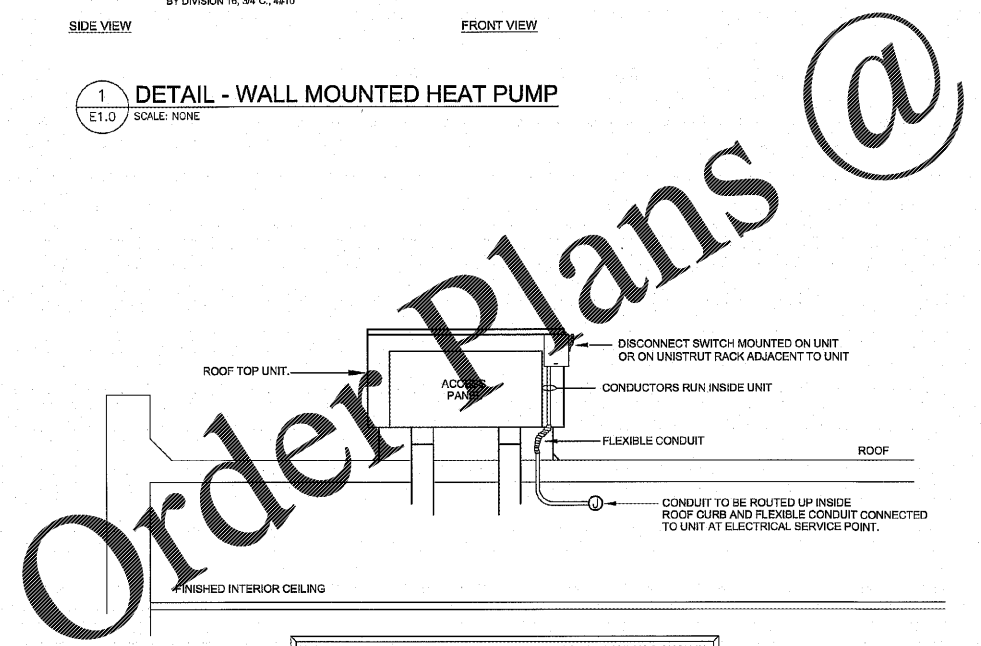
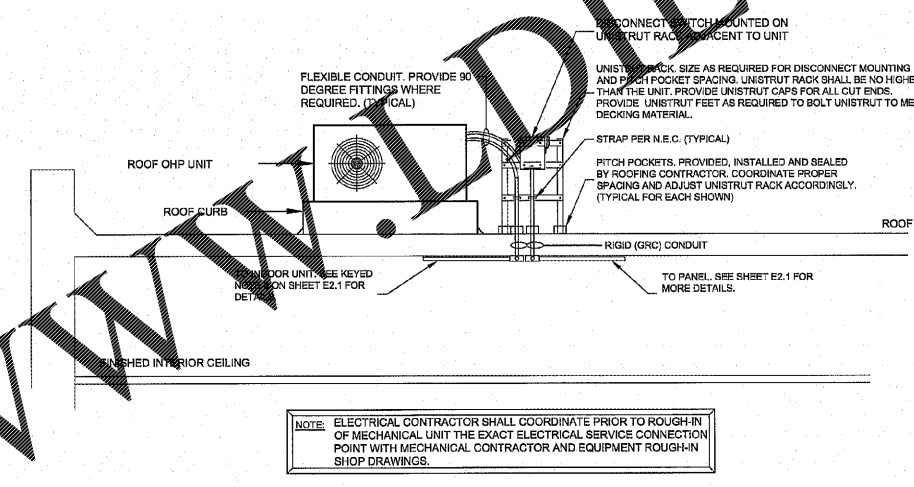
- DO NOT SCALE DRAWINGS TO LOCATE EQUIPMENT OR DEVICES SHOWN.
- MOUNTING HEIGHTS AS INDICATED ON THE DRAWINGS SHALL BE FROM THE FINISHED FLOOR TO THE CENTER LINE OF THE OUTLET BOX.
- THE ELECTRICAL DRAWINGS ARE ONLY A PART OF THE CONTRACT DOCUMENTS, ALL OF THE DRAWINGS AND SPECIFICATIONS MUST BE REVIEWED FOR THEIR INTERRELATIONSHIP AND REQUIRED COORDINATION BETWEEN DISCIPLINES.
- 112 SYMBOL INDICATING ROOM OR SPACE NUMBER.
- ALL CONDUIT, OUTLET BOXES, AND LOW VOLTAGE CABLING SHALL BE APPROPRIATELY SUPPORTED THROUGHOUT THE PROJECT. SUPPORT OF THESE ITEMS BY CEILING GRID OR GRID SUPPORT WIRES IS NOT ACCEPTABLE.
- PRIOR TO PROJECT COMPLETION, ELECTRICAL CONTRACTOR SHALL OBTAIN SPACE NUMBERS FROM OWNER AND/OR ARCHITECT AND PROVIDE TYPE WRITTEN PANEL SCHEDULES WHERE CIRCUITS ARE ADDED OR DELETED IN EXISTING PANELS. WHERE CIRCUITS ARE REMOVED, LABEL BREAKERS AS SPARE ON PANEL SCHEDULE. TYPEWRITTEN PANELBOARD DIRECTORIES SHALL REFLECT SPACE DESIGNATION OF EACH CIRCUIT. NO EXCEPTIONS.
- DIVISION 26 CONTRACTOR SHALL WARRANTY ALL EQUIPMENT AND INSTALLATION OF SUCH FOR TWO (2) YEARS FROM DATE OF PROJECT ACCEPTANCE. WARRANTY APPLIES TO ENTIRE DIVISION 26 SCOPE.
- REFER TO SPECIFICATIONS FOR LABELING OF ALL JUNCTION BOX COVERS.
- PROVIDE I.D. TAGS FOR EXISTING NEW DISCONNECTS. SEE DETAIL 2E1.0 OF THIS SHEET.
- CONTRACTOR IS TO NOTE LOCATIONS OF ALL FIRE WALLS. FIRESTOP ALL CONDUIT PENETRATIONS ACCORDINGLY.
- THE CONTRACTOR SHALL REFER TO ARCHITECTURAL AND MECHANICAL DRAWINGS FOR COMPLETE SCOPE.
- COORDINATE ELECTRICAL WITH ARCHITECTURAL, STRUCTURAL AND MECHANICAL DRAWINGS. PROVIDE FITTINGS, JUNCTION BOXES AND ACCESSORIES TO MEET CONDITIONS.



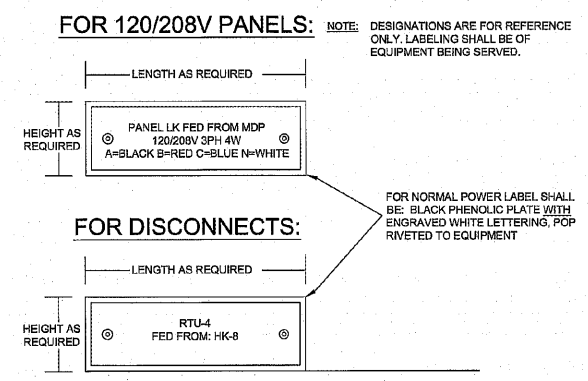
**1** DETAIL - WALL MOUNTED HEAT PUMP  
E1.0 SCALE: NONE



**2** DETAIL - OHP ROOF TOP UNIT DISCONNECT MOUNTING  
E1.0 SCALE: TYPICAL FOR ALL OHP ROOF TOP UNITS



**3** DETAIL - ROOF TOP UNIT MOUNTED DISCONNECT  
E1.0 SCALE: NONE



**3** EQUIPMENT IDENTIFICATION TAG DETAIL  
E1.0 SCALE: NOT TO SCALE

**KEY PLAN:**

Date	Description

**TERRACE MANOR ELEMENTARY SCHOOL ROOF AND HVAC**

FOR  
RICHMOND COUNTY BOARD OF EDUCATION  
RCBOE # B-18-012-4330  
3110 TATE ROAD AUGUSTA, GA

**DRAWING TITLE**

**LEGEND, NOTES AND DETAILS**

PROJECT NO.	20-14	DRAWING NO.	E1.0
DATE	12/07/2020		
DRAWN BY	KH		
PAPER	24"x36"		
ISSUE	BID SET		

**EDC** ELECTRICAL DESIGN CONSULTANTS, INC.  
ELECTRICAL ENGINEERS  
1231 BROAD ST., SUITE 1-A  
AUGUSTA, GA 30901  
PH: (706) 724-3851  
FAX: (706) 724-8907  
EDC PROJECT #: 20065