

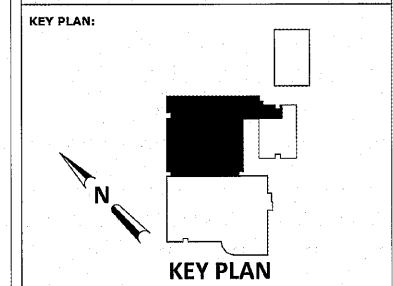
This document is property of 2KM Architects, Inc. The unauthorized reproduction, copying, or alteration of this document is strictly prohibited and any infringement thereupon may be subject to legal action.

KEYNOTES: (THIS SHEET ONLY)

- 1 EXISTING FIXTURE TO REMAIN.
- 2 REMOVE AND REPLACE EXISTING FIXTURE. RE-ROUGH AS NECESSARY FOR INSTALLATION OF NEW FIXTURE. PROVIDE NEW P-TRAPS, SUPPLY STOPS AND SUPPLIES AT LAVATORIES.

ALTERNATES:
SEE CONTRACT DOCUMENTS FOR INFORMATION ON ALTERNATES PERTAINING TO THE PLUMBING SCOPE OF WORK.

PFA
ENGINEERING
FRUETT, FORD & ASSOCIATES, INC.
LIC. NO. PE000760 EXP. 06/30/2022
1201 BROAD STREET, SUITE 3A
AUGUSTA, GEORGIA 30901
706.722.5959 FAX 706.724.5127



REVISIONS:

| Date | Description |
|------|-------------|
| | |
| | |
| | |
| | |

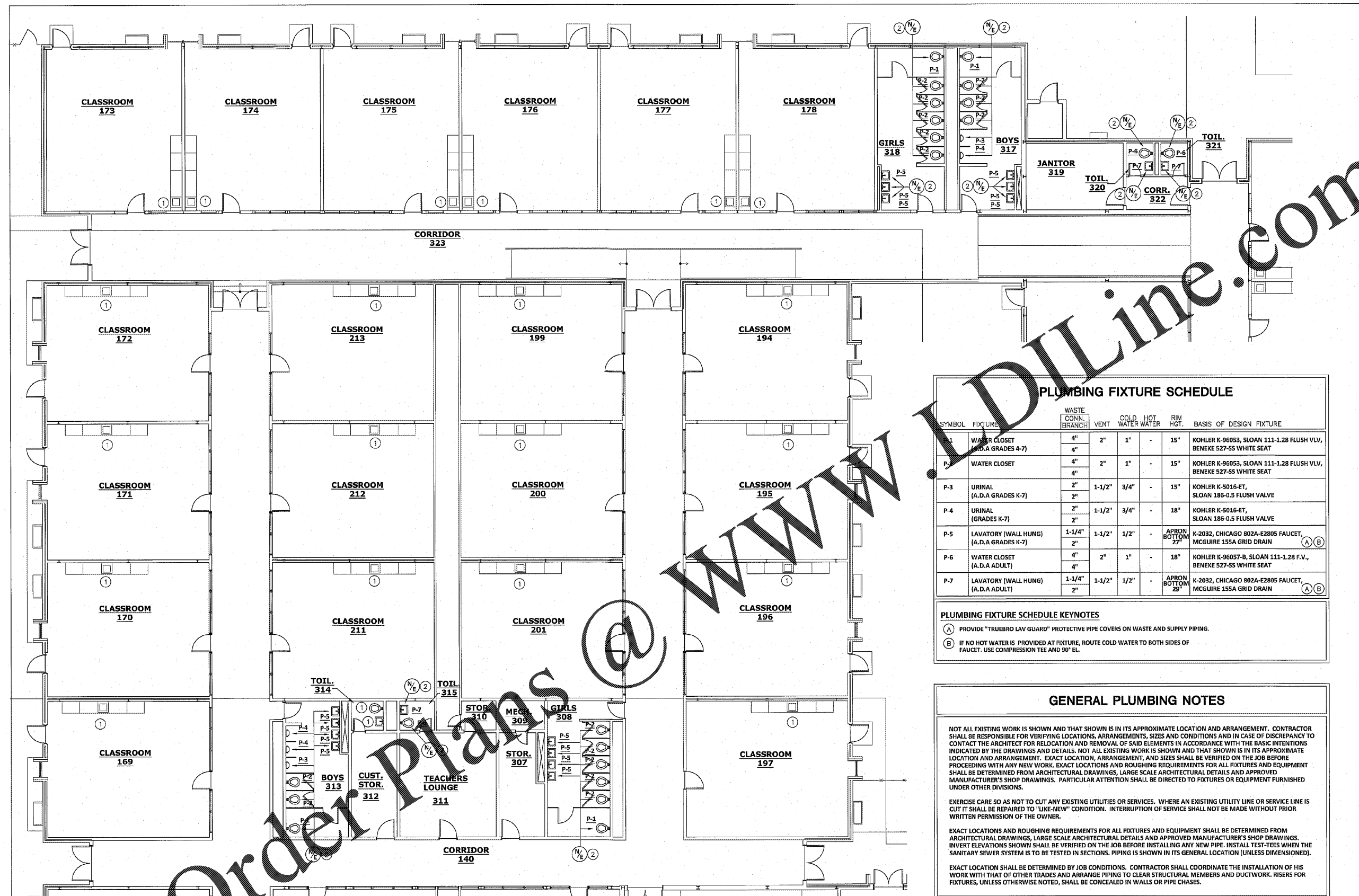
**TERRACE MANOR
ELEMENTARY
SCHOOL ROOF AND
HVAC**

FOR
RICHMOND COUNTY BOARD OF EDUCATION
RCBOE # B-18-012-4330
3110 TATE ROAD AUGUSTA, GA

DRAWING TITLE

**ALTERNATE
PLUMBING PLAN**

| | | | |
|-------------|----------------|-------------|--|
| PROJECT NO. | 20-14 | DRAWING NO. | |
| DATE | 12/07/2020 | | |
| DRAWN BY | MFJ | | |
| PAPER | 24"x36" | | |
| ISSUE | ISSUED FOR BID | | |



1 PLUMBING PLAN
SCALE: 1/8" = 1'-0"

PLUMBING FIXTURE SCHEDULE

| SYMBOL | FIXTURE | WASTE CONN. BRANCH | VENT | COLD WATER | HOT WATER | RIM HGT. | BASIS OF DESIGN FIXTURE |
|--------|--------------------------------------------|--------------------------|--------|---------------|--------------|------------------------|-----------------------------------------------------------------------|
| P-1 | WATER CLOSET (A.D.A GRADES 4-7) | 4" | 2" | 1" | - | 15" | KOHLER K-96053, SLOAN 111-1.28 FLUSH VLV, BENEKE 527-SS WHITE SEAT |
| P-2 | WATER CLOSET | 4" | 2" | 1" | - | 15" | KOHLER K-96053, SLOAN 111-1.28 FLUSH VLV, BENEKE 527-SS WHITE SEAT |
| P-3 | URINAL (A.D.A GRADES K-7) | 2" | 1-1/2" | 3/4" | - | 15" | KOHLER K-5016-ET, SLOAN 186-0.5 FLUSH VALVE |
| P-4 | URINAL (GRADES K-7) | 2" | 1-1/2" | 3/4" | - | 18" | KOHLER K-5016-ET, SLOAN 186-0.5 FLUSH VALVE |
| P-5 | LAVATORY (WALL HUNG) (A.D.A GRADES K-7) | 1-1/4" | 1-1/2" | 1/2" | - | APRON BOTTOM 27" | K-2032, CHICAGO 802A-E2805 FAUCET, MCGUIRE 155A GRID DRAIN (A)(B) |
| P-6 | WATER CLOSET (A.D.A ADULT) | 4" | 2" | 1" | - | 18" | KOHLER K-96057-B, SLOAN 111-1.28 F.V., BENEKE 527-SS WHITE SEAT |
| P-7 | LAVATORY (WALL HUNG) (A.D.A ADULT) | 1-1/4" | 1-1/2" | 1/2" | - | APRON BOTTOM 27" | K-2032, CHICAGO 802A-E2805 FAUCET, MCGUIRE 155A GRID DRAIN (A)(B) |

PLUMBING FIXTURE SCHEDULE KEYNOTES

- (A) PROVIDE "TRUEBRO LAV GUARD" PROTECTIVE PIPE COVERS ON WASTE AND SUPPLY PIPING.
- (B) IF NO HOT WATER IS PROVIDED AT FIXTURE, ROUTE COLD WATER TO BOTH SIDES OF FAUCET. USE COMPRESSION TEE AND 90° EL.

GENERAL PLUMBING NOTES

NOT ALL EXISTING WORK IS SHOWN AND THAT SHOWN IS IN ITS APPROXIMATE LOCATION AND ARRANGEMENT. CONTRACTOR SHALL BE RESPONSIBLE FOR VERIFYING LOCATIONS, ARRANGEMENTS, SIZES AND CONDITIONS AND IN CASE OF DISCREPANCY TO CONTACT THE ARCHITECT FOR RELOCATION AND REMOVAL OF SAID ELEMENTS IN ACCORDANCE WITH THE BASIC INTENTIONS INDICATED BY THE DRAWINGS AND DETAILS. NOT ALL EXISTING WORK IS SHOWN AND THAT SHOWN IS IN ITS APPROXIMATE LOCATION AND ARRANGEMENT. EXACT LOCATION, ARRANGEMENT, AND SIZES SHALL BE VERIFIED ON THE JOB BEFORE PROCEEDING WITH ANY NEW WORK. EXACT LOCATIONS AND ROUGHING REQUIREMENTS FOR ALL FIXTURES AND EQUIPMENT SHALL BE DETERMINED FROM ARCHITECTURAL DRAWINGS, LARGE SCALE ARCHITECTURAL DETAILS AND APPROVED MANUFACTURER'S SHOP DRAWINGS. PARTICULAR ATTENTION SHALL BE DIRECTED TO FIXTURES OR EQUIPMENT FURNISHED UNDER OTHER DIVISIONS.

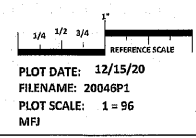
EXERCISE CARE SO AS NOT TO CUT ANY EXISTING UTILITIES OR SERVICES. WHERE AN EXISTING UTILITY LINE OR SERVICE LINE IS CUT IT SHALL BE REPAIRED TO "LIKE-NEW" CONDITION. INTERRUPTION OF SERVICE SHALL NOT BE MADE WITHOUT PRIOR WRITTEN PERMISSION OF THE OWNER.

EXACT LOCATIONS AND ROUGHING REQUIREMENTS FOR ALL FIXTURES AND EQUIPMENT SHALL BE DETERMINED FROM ARCHITECTURAL DRAWINGS, LARGE SCALE ARCHITECTURAL DETAILS AND APPROVED MANUFACTURER'S SHOP DRAWINGS. INVERT ELEVATIONS SHOWN SHALL BE VERIFIED ON THE JOB BEFORE INSTALLING ANY NEW PIPE. INSTALL TEST-TEES WHEN THE SANITARY SEWER SYSTEM IS TO BE TESTED IN SECTIONS. PIPING IS SHOWN IN ITS GENERAL LOCATION (UNLESS DIMENSIONED).

EXACT LOCATION SHALL BE DETERMINED BY JOB CONDITIONS. CONTRACTOR SHALL COORDINATE THE INSTALLATION OF HIS WORK WITH THAT OF OTHER TRADES AND ARRANGE PIPING TO CLEAR STRUCTURAL MEMBERS AND DUCTWORK. RISERS FOR FIXTURES, UNLESS OTHERWISE NOTED, SHALL BE CONCEALED IN WALLS OR PIPE CHASES.

PLUMBING LEGEND

| SYMBOL | DESCRIPTION | SYMBOL | DESCRIPTION |
|--------|--------------------------------------|--------|-------------|
| (N/E) | NEW WORK CONNECTION TO EXISTING WORK | | |



Order Plans @ WWW.DIline.com

COPYRIGHT © 2020 2KM ARCHITECTS, INC. AUGUSTA, GA 30901 (706) 726-3929