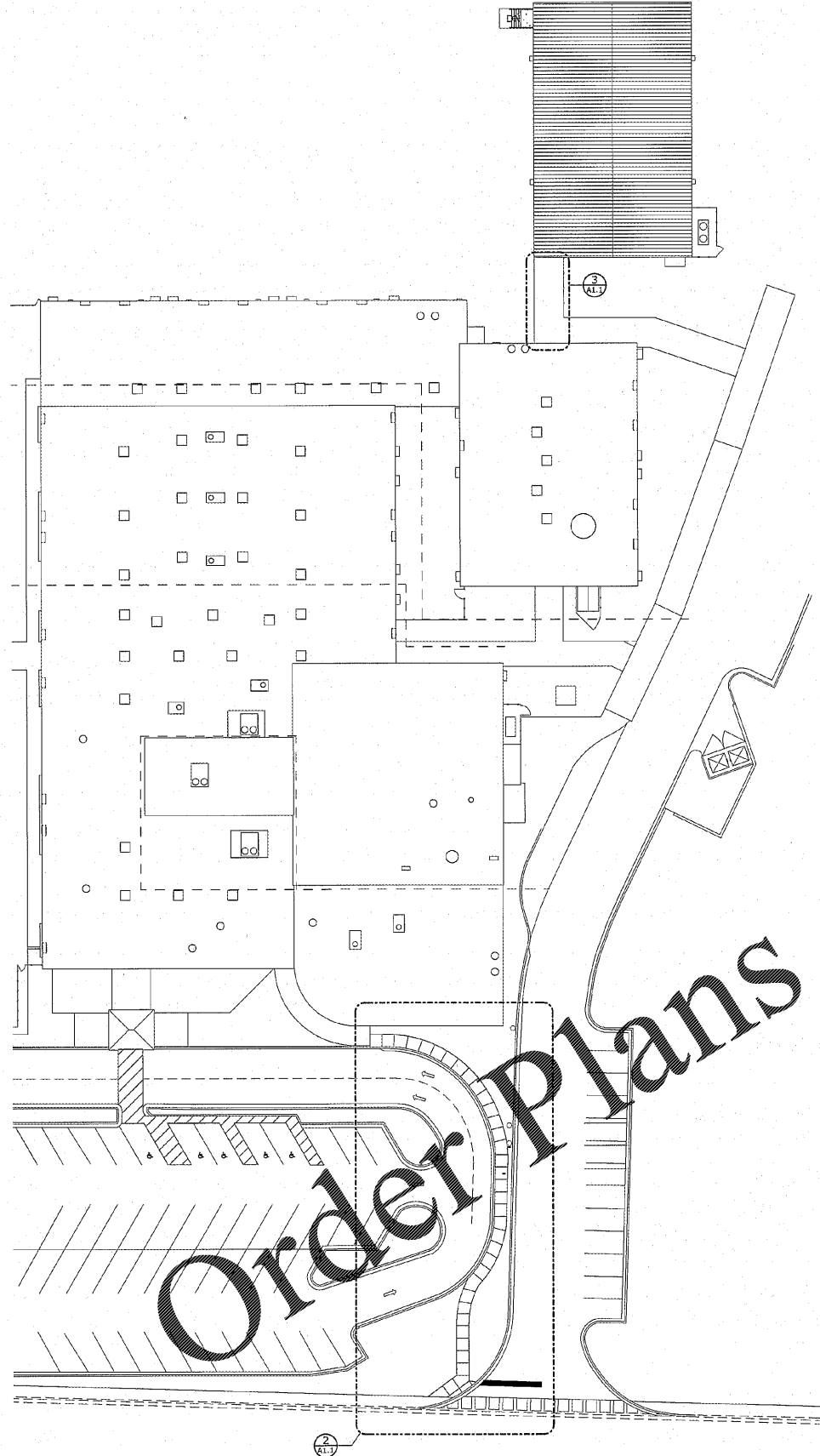


Z:\Mch\_e\_Projects\2020 Projects\20-14 Terrace Manor ES\DWG\MS (CD) Construction Documents\W\_L\KID SET.rvt  
 PRINTED: 12/16/2020 8:35:44 AM

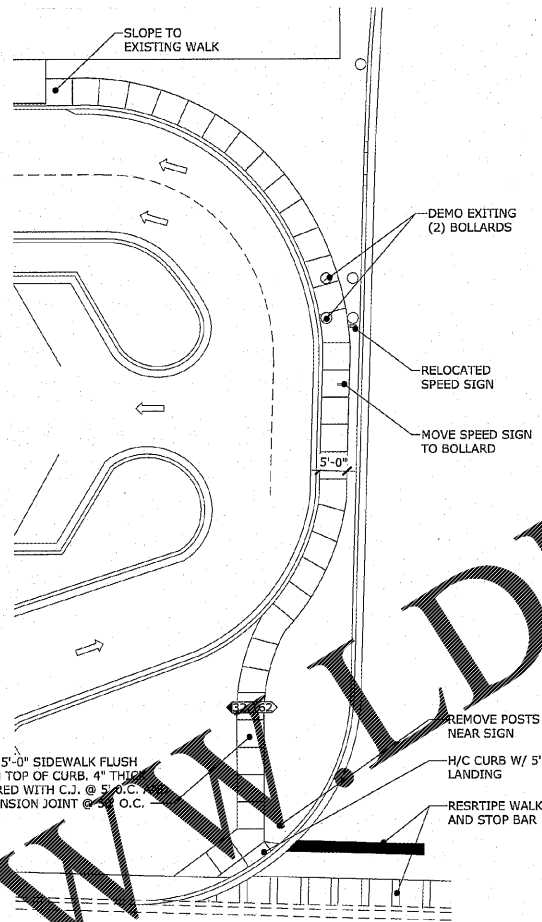


**1 SITE PLAN**  
 SCALE: 1" = 30'-0"



PLAN NORTH

**ADD ALT #1**

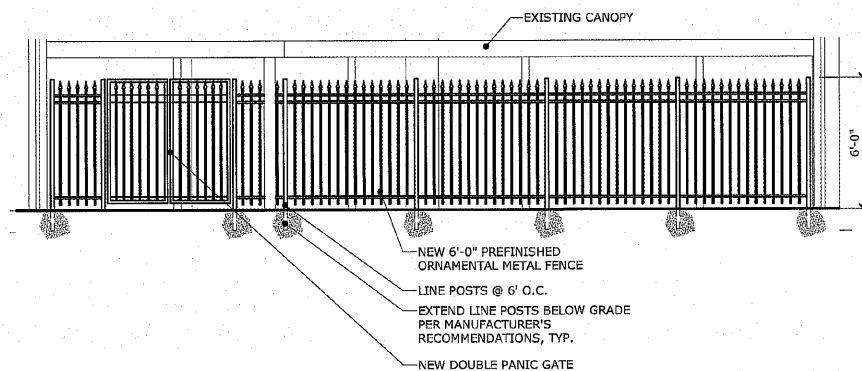


**2 ENLARGED SITE PLAN**  
 SCALE: 1/16" = 1'-0"



PLAN NORTH

**ADD ALT #1**



**4 ELEVATION**  
 SCALE: 1/4" = 1'-0"

**ADD ALTERNATE #1 - CIVIL/SITE WORK:**

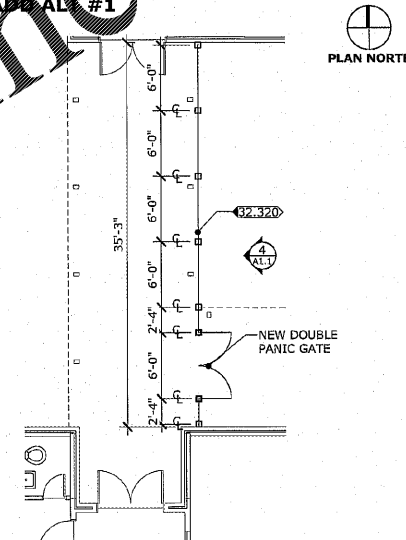
- A. ADD SIDEWALK FROM S-W BUS DRIVE TO CONNECT TO FRONT ENTRY FOR "WALKERS". ADD SIDEWALK FROM S-W BUS DRIVE TO CONNECT TO FRONT ENTRY FOR "WALKERS". RESTORE GRASSING: HYDRO SEED, NURSE CROP, PERMANENT GRASSING, JUSTE MAT W/ SEED ON SLOPES, AND SCARIFY BARE SOILS.
- E. INSTALL NEW 6'-0" H PREFINISHED ORNAMENTAL METAL FENCING TO PROTECT CANOPY COVERED PATHWAY BETWEEN S-E EXIT TO P.E. BUILDING. REQUIRES DOUBLE PANIC GATES. (ACCESS N-W PLAY AREAS & BUS LOADING CANOPY) ADD HOLD-OPEN BUMPER STOPS.

**CONSTRUCTION NOTES**

**DIVISION 32 - EXTERIOR IMPROVEMENTS: ADD ALTERNATE #1**

- 32.162 ADD SIDEWALK FROM S-W BUS DRIVE TO CONNECT TO FRONT ENTRY FOR "WALKERS".
- 32.320 INSTALL NEW 6'-0" H PREFINISHED ORNAMENTAL METAL FENCING TO PROTECT CANOPY COVERED PATHWAY BETWEEN S-E EXIT TO P.E. BUILDING. REQUIRES DOUBLE PANIC GATES. (ACCESS N-W PLAY AREAS & BUS LOADING CANOPY) ADD HOLD-OPEN BUMPER STOPS.

**ADD ALT #1**



**3 ENLARGED PLAN**  
 SCALE: 1/8" = 1'-0"



This document is property of 2KM Architects, Inc. This unapproved reproduction, copying, or otherwise use of this document is strictly prohibited and any infringement thereupon may be subject to legal action. Copyright © 2020, 2KM Architects, Inc.

**KEY PLAN:**

**REVISIONS:**

Date	Description

**TERRACE MANOR  
 ELEMENTARY  
 SCHOOL ROOF AND  
 HVAC**

FOR  
 RICHMOND COUNTY BOARD OF EDUCATION  
 RCBOE # B-18-012-4330  
 3110 TATE ROAD AUGUSTA, GA

**DRAWING TITLE**

**SITE PLAN AND  
 DETAILS - ADD  
 ALTERNATES**

PROJECT NO.	20-14	DRAWING NO.	
DATE	12/07/2020		
DRAWN BY	JF		
PAPER	24"x36"		
ISSUE	ISSUE FOR BID		

**A1.1**