

1 PARITAL P.E. PLAN
 A0.1 SCALE: 1/8" = 1'-0"
 SCALE: 1/8" = 1'-0"

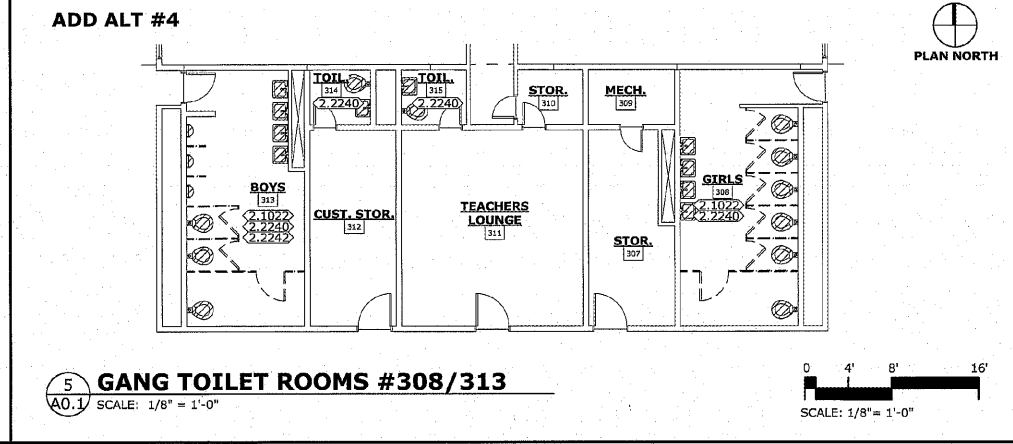
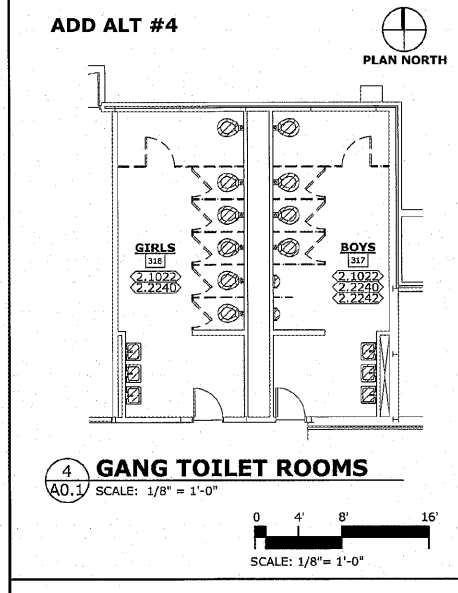
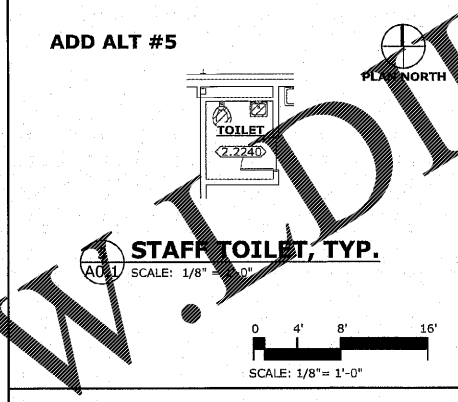
2 DEMOLITION PLAN
 A0.1 SCALE: 1" = 20'-0"

ADD ALTERNATES DEMOLITION NOTES

DIVISION 9 - FINISHES DEMO
 2.9581 ADD ALTERNATE #2: DEMO EXISTING CARPET TILE AND DISPOSE. PREP FOR NEW FLOORING.

DIVISION 10 - SPECIALTIES DEMO
 2.1022 ADD ALTERNATE #4: DEMO EXISTING TOILET PARTITIONS AND DISPOSE.

DIVISION 22 - PLUMBING DEMO
 2.2240 ADD ALTERNATE #4: REMOVE EXISTING TOILETS, SINKS AND DISPOSE.
 2.2242 ADD ALTERNATE #4: REMOVE EXISTING URINALS AND DISPOSE.



ADD ALTERNATE #1 - CIVIL/SITE WORK:
 A. ADD SIDEWALK FROM S-W BUS DRIVE TO CONNECT TO FRONT ENTRY FOR "WALKWAY" RESTORE GRASSING: HYDRO SEED, NURSE CROP, PERMANENT GESSING, JUSTE MAT W/ SEED ON SLOPES, AND SCARIFY BARE SOILS.
 B. EROSION ON N-W BANK TOWARD PLAYGROUND & UNDER DRIP-LINE OF ROOF EAVE. ADD GUTTER & DOWNSPOUTS, INFILL MUD-HOLES ALONG WALL, EXTEND RDL'S TO RIP-RAP.
 C. EROSION ON N-E SIDE. DEALING WITH DOWNSPOUTS WITH NEW SPLASH PADS/GRAVEL SUB-BASE.
 D. GATES PADLOCKED AT EGRESS PATH S-E COURTYARD. ADD PANIC-OUT HARDWARE W/ MODIFIED GATE ASSEMBLY
 E. INSTALL NEW 6'-0" H PREFINISHED ORNAMENTAL METAL FENCING TO PROTECT CANOPY COVERED PATHWAY BETWEEN S-E EXIT TO P.E. BUILDING. REQUIRES DOUBLE PANIC GATES. (ACCESS N-W PLAY AREAS & BUS LOADING CANOPY) ADD HOLD-OPEN BUMPER STOPS.

ADD ALTERNATE #2 - FLOORING IN P.E. OFFICE:
 A. REMOVE EXISTING CARPET AND INSTALL SOLID VINYL TILE IN COACHES OFFICE IN P.E. BLDG.

ADD ALTERNATE #3 - PRIME AND PAINT CORRIDORS:
 A. INSTALL STAIN-BLOCK PRIMER & 2-FINISH COATS PAINT ON CORRIDOR CEILINGS.
 B. INSTALL 2-PART EPOXY PAINT WAINSCOT IN CORRIDORS.
 C. REPLACEMENT LED LIGHTING FOR CORRIDORS

ADD ALTERNATE #4 - REFRESH STUDENT TOILET ROOMS:
 A. PRIME AND PAINT GANG TOILET ROOMS.
 B. REPLACE TOILET COMPARTMENTS IN GANG TOILET ROOMS.
 C. REPLACE WALL HUNG SINKS/LAVATORIES W/ FAUCETS/TRAPS IN GANG TOILET ROOMS.
 D. REPLACE TOILET FIXTURES W/ FLUSH VALVES GANG TOILET ROOMS

ADD ALTERNATE #5 - REFRESH STAFF TOILET ROOMS:
 A. PRIME AND PAINT STAFF TOILET ROOMS.
 B. REPLACE STAFF TOILET FIXTURES.

ADD ALTERNATE #6 - REFRESH KITCHEN, CAFETERIA AND STAGE AREA:
 A. ADD FIBERGLASS REINFORCED PLASTIC WAINSCOT PROTECTION ON KITCHEN GPDW WALLS.
 B. PRIME AND PAINT CAFETERIA & STAGE AREA.
 C. REPLACEMENT LED LIGHTING FOR STAGE, SEE ELECTRICAL DRAWINGS.

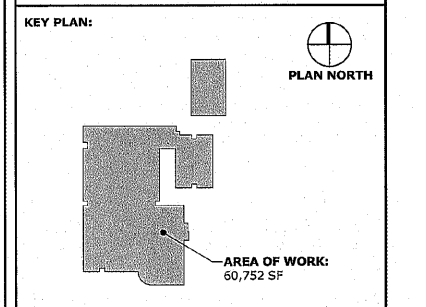
ADD ALTERNATE #7 - REPLACEMENT LED LIGHTING IN TEACHER WORKROOM

ADD ALTERNATE #8 - MINI-SPLIT IN PRINCIPALS OFFICE, SEE MECHANICAL DRAWINGS

2.K.M. ARCHITECTS, INC.
 ARCHITECTS, INC.
 539 GREENE ST., AUGUSTA, GA. 30901
 (706) 736-3333 - FAX (706) 736-7100

STATE OF GEORGIA
 ROBERT L. MAULDIN
 12/07/2020
 REGISTERED ARCHITECT
 LICENSE NO. 9899

This document is property of 2KM Architects, Inc. The unauthorized reproduction, copying, or otherwise use of this document is strictly prohibited and any infringement thereupon may be subject to legal action.
 Copyright © 2020, 2KM Architects, Inc.



REVISIONS:

Date	Description

TERRACE MANOR ELEMENTARY SCHOOL ROOF AND HVAC

FOR
 RICHMOND COUNTY BOARD OF EDUCATION
 RCBOE # B-18-012-4330
 3110 TATE ROAD AUGUSTA, GA

DEMOLITION PLAN - ADD ALTERNATES

PROJECT NO. 20-14 DRAWING NO. A0.1
 DATE 12/07/2020
 DRAWN BY JF
 PAPER 24"x36"
 ISSUE ISSUE FOR BID

Z:\Active_Projects\2020\Projects\20-14 Terrace Manor ES\DRAWINGS\CD\Construction Documents\W\FD01.SET.rvt
 PRINTED: 12/16/2020 6:56:41 AM