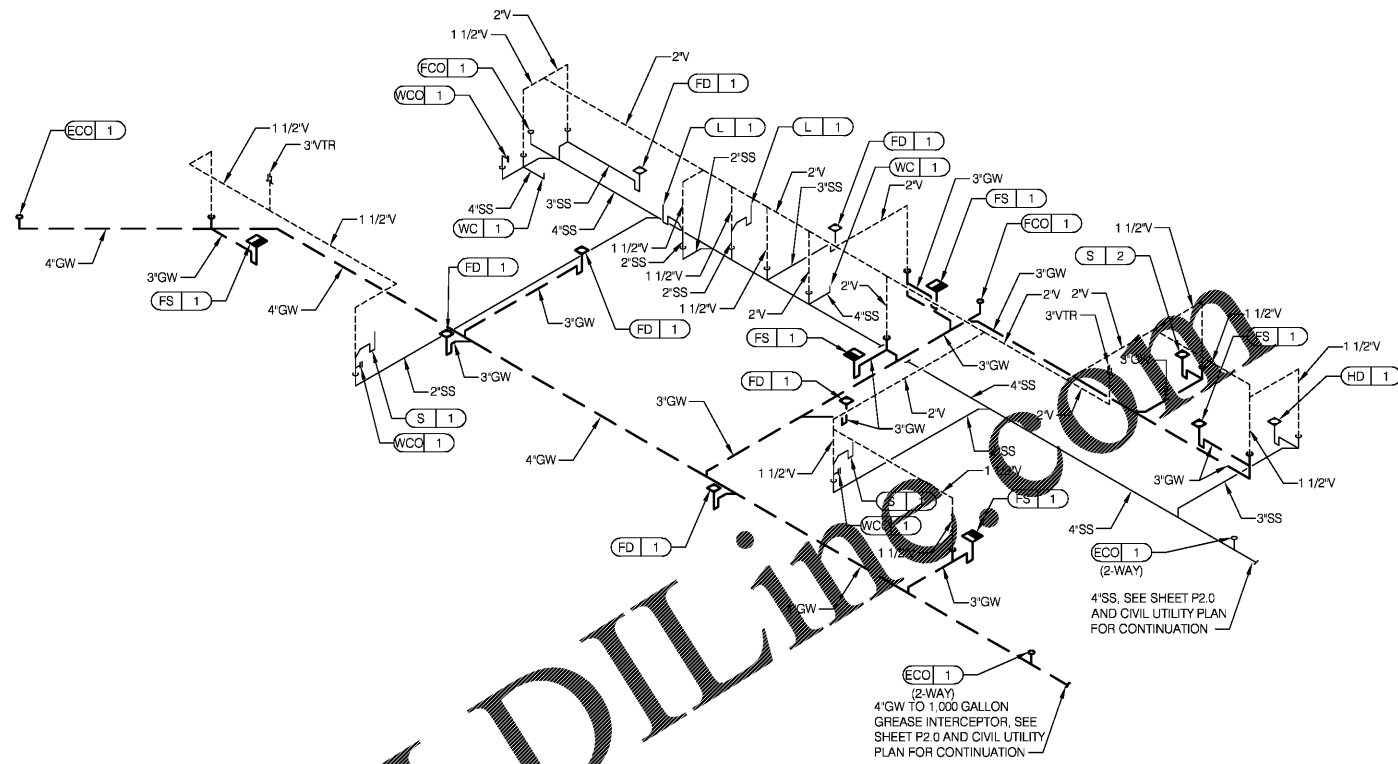
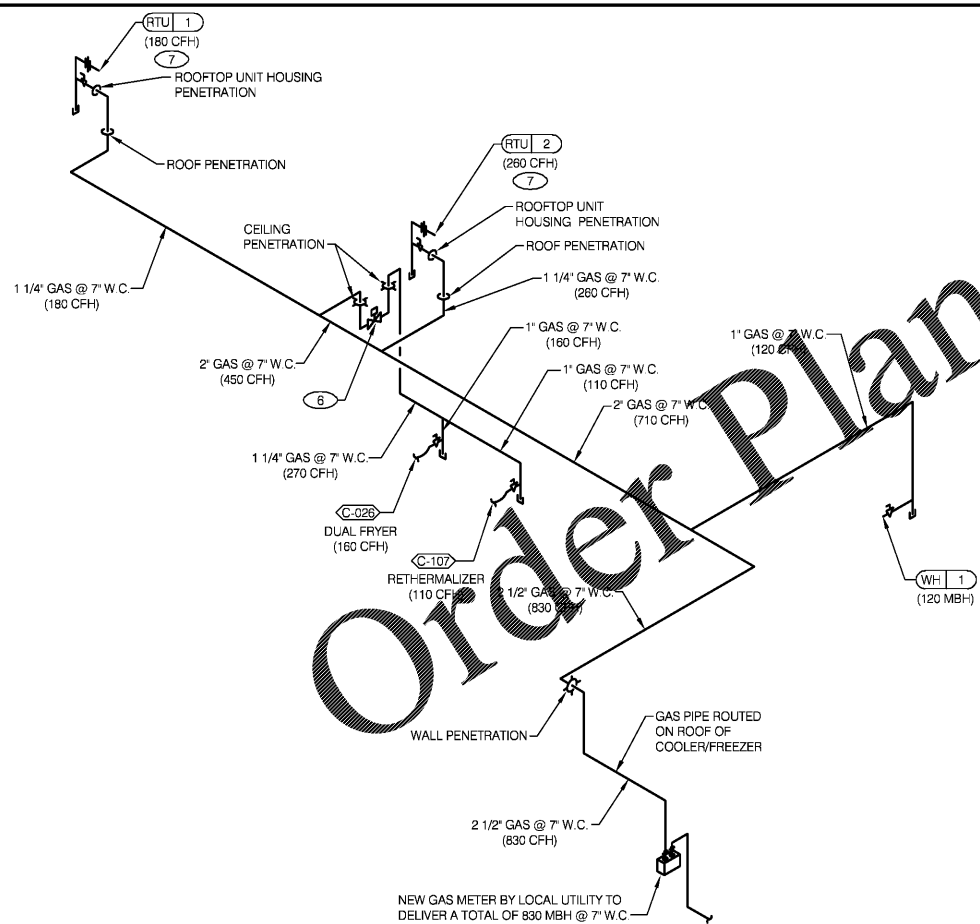


WATER ISOMETRIC N.T.S. **4**



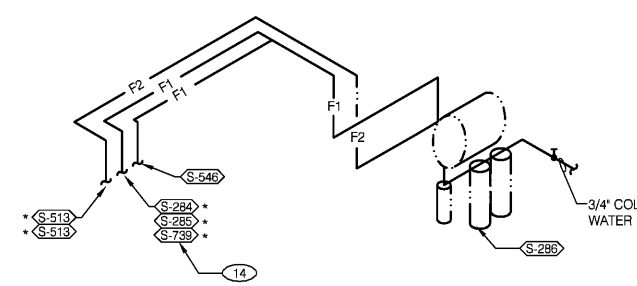
WASTE AND VENT ISOMETRIC N.T.S. **1**



| GAS DEMAND SCHEDULE | |
|---------------------|-------------------------------|
| RTU-1 | 180 CFH |
| RTU-2 | 260 CFH |
| WH-1 | 120 CFH |
| DOUBLE FRYER | 160 CFH |
| REHEATER | 110 CFH |
| TOTAL DEMAND | 830 CFH = 830,000 BTUH |

PIPE SIZE BASED ON 125' DEVELOPMENTAL LENGTH TO MOST REMOTE OUTLET WITH 7" W.C. AND 0.3" W.C. PRESSURE DROP PER IFGC TABLE 402.4(1)

NOTE: COORDINATE GAS DEMAND REQUIREMENTS AND PIPE SIZING WITH SITE-SPECIFIC RTU DESIGN.



- FILTERED EQUIPMENT AND LINES:**
- S-286 - WATER FILTER
- FILTERED LINE (COLD WATER)**
- S-513 - ICE MAKER - ABOVE SELF-SERVE BEVERAGE DISPENSER *
 - S-513 - ICE MAKER - ABOVE DRIVE-THRU BEVERAGE DISPENSER *
 - S-285 - DRIVE-THRU BEVERAGE DISPENSER *
 - S-284 - SELF-SERVE BEVERAGE DISPENSER *
 - S-546 - ICED TEA BREWER
 - S-739 - FROZEN BEVERAGE DISPENSER
- * FILTERED WATER SUPPLIED VIA SYRUP BUNDLE. REFER TO 11/P6.0 SEE SCOPE OF WORK FOR RESPONSIBILITIES.

FILTERED WATER ISOMETRIC N.T.S. **2**

GAS ISOMETRIC N.T.S. **5**

- EXTEND AND CONNECT NEW 4"SS TO EXISTING 4"SS CAPPED AT APPROXIMATE LOCATION INDICATED. FIELD VERIFY EXACT LOCATION. INVERT ELEVATION AND SIZE.
- 1/2" TEMPERED WATER DOWN IN WALL TO LAVATORY.
- 1/2" HOT AND COLD WATER LINES DOWN IN WALL TO PREP SINK
- THERMOSTATIC MIXING VALVE.
- EXTEND AND CONNECT NEW 4"GW TO EXISTING 4"GW CAPPED AT APPROXIMATE LOCATION INDICATED. FIELD VERIFY EXACT LOCATION. INVERT ELEVATION AND SIZE.
- EMERGENCY GAS SHUT-OFF VALVE SHALL BE A MECHANICALLY OPERATED VALVE ACTIVATED BY THE EXHAUST HOOD FIRE SUPPRESSION SYSTEM IN ACCORDANCE WITH IBC AND NFPA.
- FACTORY GAS PIPING AT ROOF TOP UNIT FOR THROUGH THE BASE PIPE CONNECTION. SHUT-OFF VALVE SHALL BE LOCATED OUTSIDE OF THE UNIT.
- 1/2" HOT AND COLD WATER LINES DOWN IN WALL TO 3 COMP SINK
- NOT USED.
- GAS SHUT-OFF VALVE IN CEILING SPACE BY G.C.
- PROVIDE SHUT-OFF VALVE OUTSIDE OF WALL FOR CONNECTION TO TB REHEATER.
- 1/2" COLD WATER CONNECT TO REVERSE OSMOSIS FILTER AND 1/2" FILTERED WATER FROM REVERSE OSMOSIS FILTER. PROVIDE SHUT-OFF ON CW PIPE PRIOR TO CONNECTION TO FILTER.
- 1/2" FILTERED WATER FROM REVERSE OSMOSIS FILTER DOWN IN UTILITY CHASE OF DRY PRODUCTION LINE. PROVIDE SHUT-OFF VALVE ON FW PIPE IN CEILING NEAR UTILITY CHASE.
- TEE OFF 3/8" LINE FROM DRIVE THRU BEVERAGE DISPENSER FILTERED WATER SUPPLY. SEE DETAIL 16/P6.0.
- FLOW CONTROL FITTING WITH VENT.
- 1/2"FW VALVE AND CAPPED IN CEILING SPACE FOR FUTURE CONNECTION.
- EXTEND AND CONNECT NEW 1 1/2" COLD WATER PIPE TO EXISTING 1 1/2" COLD WATER PIPE. FIELD VERIFY EXACT LOCATION.

KEYNOTES **3**

ROBERT L. QUEATHEN
ENGINEER
1850 CRAIG ROAD, SUITE 300
ST. LOUIS, MO 63146
PH. (314) 455-2400 FAX (314) 455-2300
www.rlcra.com

CONTRACT DATE: XX/XX/20
BUILDING TYPE: ENDEAVOR MED 40
PLAN VERSION: SEPT 2020
BRAND DESIGNER: 200109
SITE NUMBER: 297222
STORE NUMBER: 003717



RISER DIAGRAMS
P5.0