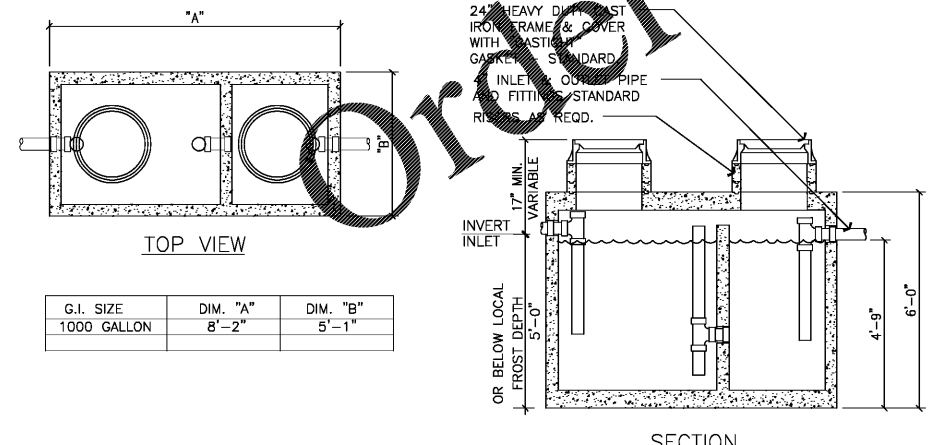


WASTE & VENT PLAN 1/4"=1'-0" A



GREASE INTERCEPTOR DETAIL N.T.S. D

- WASTE & VENT PLAN NOTES** C
- A. NO ROOF PENETRATIONS PERMITTED WITHIN ROOF WATER PLY. REFER TO ROOF PLAN FOR LOCATIONS.
- B. REFER TO RISER DIAGRAM ON SHEET P5.0 FOR ALL WASTE AND VENT SIZES.

- KEY NOTES** B
- UNDERGROUND SANITARY PIPE SHALL BE HUB CAST IRON PIPE FOR THE FIRST 10 FEET FROM CONNECTION TO FLOOR SINK FS-2, OUTWARD.
 - PROVIDE CONDENSATE LINE AND DRAIN LINE FROM ICE MACHINE TO FS. PROVIDE AIR GAP PER LOCAL CODE.
 - PROVIDE WASTE LINES FROM BEVERAGE UNIT TO FS. PROVIDE AIR GAP PER LOCAL CODE.
 - PROVIDE 3/4" COPPER CONDENSATE FROM COOLER/FREEZER EVAPORATOR DRAIN PROVIDED BY VENDOR TO OUTFALL AT FLOOR DRAIN (HEAT ROPE IS SUPPLIED WITH FREEZER CONDENSATE).
 - PVC OR COPPER CONDENSATE DRAIN FROM H-VAC UNITS ON ROOF. RUN ABOVE CEILING TO MOP SINK PIPING SHALL SLOPE 1/4" PER FOOT AND SHALL BE INSULATED WITH 1" CLOSED CELLULAR INSULATION.
 - ENTIRE RUN OF DRAIN LINES TO INLET OF EXTERIOR GREASE INTERCEPTOR AND OUTLET OF INTERCEPTOR TO CONNECTION AT SANITARY MAIN SHALL BE SCHEDULE 40 PVC DWV OR AS REQUIRED BY THE AUTHORITY HAVING JURISDICTION.
 - 3" VENT UP THROUGH ROOF.
 - PIPE WASTE FROM 3-COMPARTMENT SINK TO FLOOR SINK WITH AIR GAP PER CODE.
 - NEW 1" CONDENSATE PIPE FROM RTU-1 ROUTED IN CEILING SPACE. SEE DETAIL 13 ON DRAWING P6.0. FIELD VERIFY EXACT LOCATION.
 - NEW 1" CONDENSATE FROM RTU-2 ROUTED IN CEILING SPACE. SEE DETAIL 13 ON DRAWING P6.0. FIELD VERIFY EXACT LOCATION.
 - 1-1/2" CONDENSATE DRAIN PIPE DOWN TO MOP SINK. PROVIDE AIR GAP AS REQUIRED BY CODE. IF REQUIRED RUN CONDENSATE PIPING TO EXTERIOR DRYWELL, RETENTION AREA OR STORM SEWER AS DIRECTED BY THE AUTHORITY HAVING JURISDICTION.
 - RUN DRAIN LINE FROM S/S DRINK MACHINE THRU WALL OPENING. TO OUTFALL AT FS BENEATH D/T DRINK MACHINE.
 - NEW 1,000 GALLON GREASE INTERCEPTOR.
 - DRAIN FOR REVERSE OSMOSIS TO NEARBY FLOOR SINK. ENSURE PROPER AIR GAP.
 - 3" GREASE INTERCEPTOR VENT UP THRU ROOF.
 - 3" GREASE INTERCEPTOR VENT BELOW GRADE.
 - ROUTE GREASE INTERCEPTOR VENT UP EXTERIOR WALL AND ACROSS FREEZER/COOLER ROOF.

CONTRACT DATE:	XXXX/20
BUILDING TYPE:	ENDEAVOR MED 40
PLAN VERSION:	SEPT 2020
BRAND DESIGNER:	200109
SITE NUMBER:	297222
STORE NUMBER:	003717

TACO BELL
 8151 HWY 278 NW
 COWINGTON, GA 30014

ENDEAVOR
 "GO MOBILE"

WASTE AND VENT PLAN

P2.0