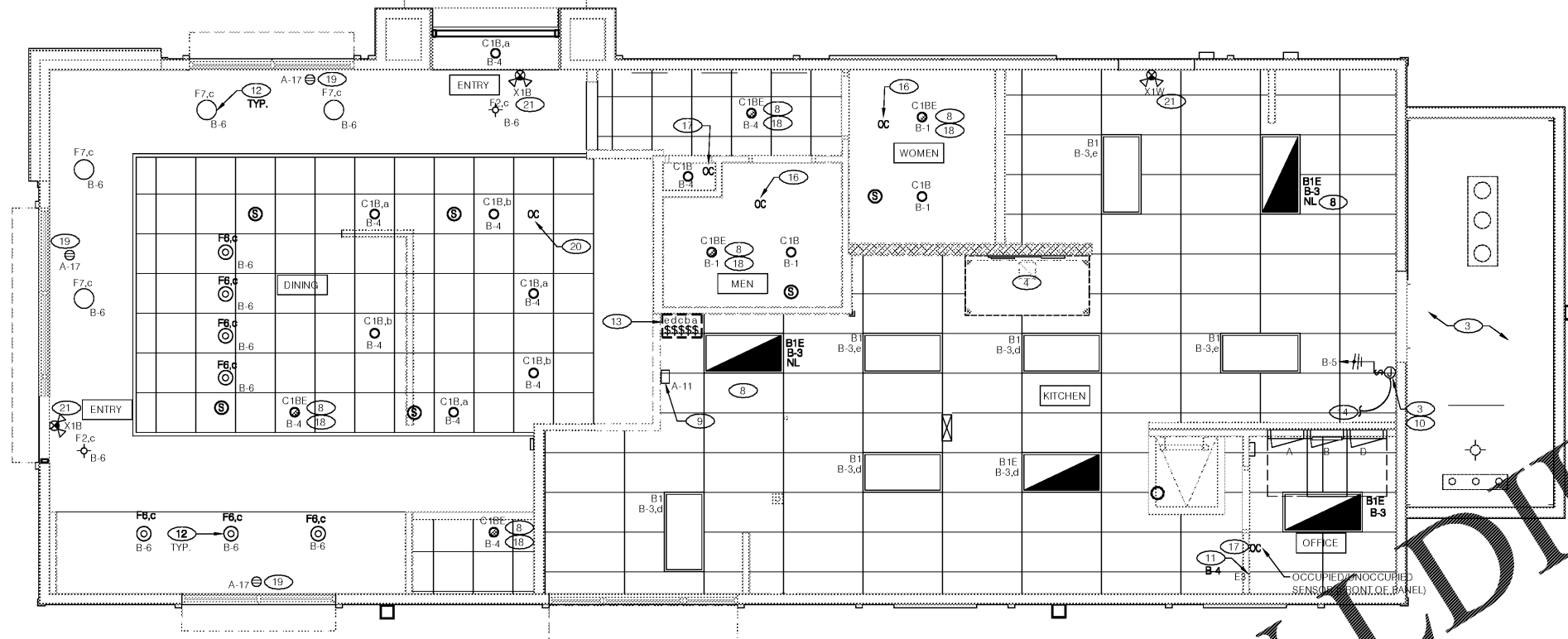


GENERAL NOTES

- A. CONFIRM LIGHTING FIXTURE QUANTITIES WITH SUPPLIER. ALL FIXTURES SUPPLIED WITH LAMPS.
- B. EMERGENCY AND NORMAL LIGHTING MARKED WITH "NL" SUBSCRIPT SHALL OPERATE CONTINUOUSLY. EMERGENCY LIGHTING NOT MARKED WITH "NL" SUBSCRIPT SHALL OPERATE UNDER CONTROL OF LIGHTING SWITCH AS INDICATED. PROVIDE UN-SWITCHED CONSTANT HOT TO EMERGENCY CONTROL IN FIXTURE AND EMERGENCY LIGHTING NOT MARKED WITH "NL" SUBSCRIPT SHALL OPERATE UNDER CONTROL OF LIGHTING SWITCH AS INDICATED. PROVIDE UN-SWITCHED CONSTANT HOT TO EMERGENCY BALLAST AND SWITCHED HOT TO NORMAL BALLAST.
- C. ALL CONDUITS ENTERING OR LEAVING COOLER/FREEZER SHALL BE PROVIDED WITH SEAL-OFF FITTING. COMPOUND PER N.E.C. 300-(7a).
- D. ALL INTERIOR LIGHTING CIRCUITS TO BE WIRED THRU THE LIGHTING CONTROL RELAYS. SEE ELECTRICAL SHEETS.
- E. CONTRACTOR TO FIELD VERIFY CEILING TYPE AND PROVIDE PROPER MOUNTING HARDWARE.
- G. CONTRACTOR TO CONSULT WITH LIGHTING MANUFACTURERS TO PROVIDE USE LABELING TO REFLECT ACTUAL LAMP WATTAGE USED. UNNECESSARY FIXTURES INSTALLED IN AN INSULATED CEILING SHALL BE RATED FOR THE INSULATION.

LIGHTING VENDOR NOTE

THE LISTED LIGHT FIXTURE PACKAGE CAN BE BID DIRECTLY OR ORDERED FROM ACCUSERV LIGHTING (DISTRIBUTOR). CONTACT ASHLEY GARNER - 502-961-0096.



1 LIGHTING PLAN 1/4" = 1'-0" **A**

1. UTILIZE TIMECLOCK CONTROLS FOR LIGHTING CIRCUITS. REFER TO E8.0 FOR ADDITIONAL INFORMATION.
2. WALK-IN FIXTURE & SWITCH FACTORY INSTALLED WITH UNIT. CONTRACTOR TO COMPLETE CIRCUITING. PROVIDE LIQUID-TIGHT FLEXIBLE CONDUIT FOR CONDUCTORS. REFER TO GENERAL NOTE "D".
3. FOR LIGHTING FIXTURES, CONDUIT, CONDUCTORS AND INSTALLATION RESPONSIBILITIES, REFER TO SCOPE OF WORK.
4. EXHAUST HOOD LIGHT FIXTURES SUPPLIED WITH HOOD AND MOUNTED IN PRE-WIRED J-BOX. COMPLETE CIRCUITING PER E8.X SERIES SHEETS.
5. NOT USED.
6. NOT USED.
7. NOT USED.
8. NIGHT LIGHT.
9. ALERT LIGHT: ONLY APPLIES WHEN A GEN IV POWER SOAK IS USED. DISREGARD IF GEN III POWER SOAK IS USED. SEE SHEET E3.0 FOR POWER REQUIREMENTS.
10. FIXTURE AND SWITCH FACTORY INSTALLED WITH UNIT. G.C. TO COMPLETE CIRCUITING.
11. PROVIDE NEW INVERTER. SEE LIGHTING FIXTURE SCHEDULE FOR INFORMATION. OPTIONAL MOUNTING CONFIGURATIONS THROUGH MANUFACTURER. INSTALL INVERTER AT A LOCATION TO MINIMIZE EXCESSIVE VOLTAGE DROP ON CONDUCTORS. COORDINATE LOCATION WITH GENERAL CONTRACTOR. MAKE ALL FINAL CONNECTIONS.
12. NOT USED.
13. PROPOSED SWITCH BANK LOCATION FOR LOCAL LIGHTING CONTROL. (COORDINATE EXACT SWITCH BANK LOCATION WITH OWNER IN FIELD). CONTRACTOR TO PROVIDE SWITCH INDICATION AND LABEL FOR THEIR INTENDED USE. (NOTE: CONTRACTOR TO FIELD-VERIFY LIGHTING AREA(S) BEING CONTROLLED ARE WITHIN SIGHT OF SWITCH BANK. ANY CONTROLLED LIGHTING AREAS, NOT WITHIN LINE OF SIGHT FROM THE SWITCH BANK, SHALL BE PROVIDED WITH A SWITCH WITH AN ANNUNCIATOR DEVICE (I.E. SWITCH WITH PILOT LIGHT), SO WHEN THE AREA BEING CONTROLLED IS SWITCHED-ON, THE CONTROLLING DEVICE IS ANNUNCIATED.
14. SEAL ALL ELECTRICAL CONDUITS INTO THE WALK-IN COOLER PER U.L. LISTING RECOMMENDATIONS.
15. NOT USED.
16. REFER TO DETAIL "B", SHEET E7.0. CIRCUIT RESTROOMS AHEAD OF ANY LOCAL LIGHTING CONTROL OR RELAY.
17. LIGHTING CONTROL PANEL "TBCCB". REFER TO DETAIL #B, SHEET E8.1.
18. "C1B" FIXTURES WIRED THROUGH INVERTER "E3". REFER TO KEYED NOTE #11.
19. FLUSH MOUNTED JUNCTION BOX WITH NEMA TYPE RECEPTACLE & COVER TO MATCH DECOR. MOUNT WITHIN 6" ABOVE OR 18" PROJECTION FROM WINDOW PER N.E.C. ARTICLE 210.62.
20. FLUSH MOUNTED REMOTE MOTION SENSOR (OPTIONAL WITH TBCCB CONTROLLER) FOR OVERRIDE CONTROL OF LIGHTING CONTROL SYSTEM. CONTRACTOR TO VERIFY IN-FIELD THE FINAL LOCATION FOR COVERAGE OF ENTRYWAY(S). TERMINATE WIRING IN CONTROL PANEL. REFERENCE E8.0 FOR DIRECTION.
21. EMERGENCY LIGHT FIXTURE WITH A 90 MINUTE (MINIMUM) EMERGENCY BATTERY BACK-UP. PROVIDE A SEPARATE HOT LEAD FROM LOCAL AREA LIGHTING CIRCUIT, TO EM CONTROL IN FIXTURE, BY-PASSING ALL SWITCHING AND LIGHTING CONTROL. (NOTE: CONTRACTOR TO VERIFY/PROVIDE RED HANDLE LOCK ON CLIP AND IDENTIFICATION OF CIRCUIT BREAKERS SERVICING EMERGENCY FIXTURES). SEE LIGHTING FIXTURE SCHEDULE AND GENERAL NOTES, THIS SHEET. (NOTE: CONTRACTOR TO PROVIDE ADDITIONAL CODE COMPLIANT EMERGENCY EGRESS LIGHTING FIXTURES IF REQUIRED BY THE A.H.J.)

NO.	QTY	LOCATION	MFR / CATALOG NUMBER	DESCRIPTION	LAMP #	BALLAST TYPE	MOUNTING TYPE	HT.	VOLT	WATT	REMARKS
B1	6	KITCHEN & OFFICE	MAXILITE MLFP-24DE-45-41	2x4 LED FLAT PANEL	LED	NA	RECESSED	12	120	14	
B1E	4	RESTROOMS & KITCHEN	MAXILITE MLFP-24DE-45-41-EM	2x4 LED FLAT PANEL	LED	NA	RECESSED	12	120	14	PROVIDED WITH INTEGRAL BATTERY PACK
B3	0	RESTROOM	MAXILITE MFLP14DE3535	1x4 LED FLAT PANEL	LED	NA	RECESSED	12	120	35	
E1B	0	RESTROOM	ELITE ELM-809-B	EMERGENCY LIGHT DUAL HEAD - BLACK	MR16 5W	NA	WALL	TOP @ 9'-4" U.O.N.	120	12	PROVIDE A MIN. OF 90 MINUTES ILLUMINATION.
E2	0	EXTERIOR	LIGHTALARMS CAM-SD-DB-CW	EXTERIOR EMERGENCY EGRESS FIXTURE	2	NA	WALL	SEE KEY NOTES	120	18	UNSWITCHED "HOT"
X1W	1	KITCHEN	LIGHTALARMS QLXN500R-N	EXIT SIGN, LED UNIVERSAL MOUNT LED	1	NA	WALL		120	3	
X1B	2	DINING	LIGHTALARMS QLXN500R-N, PW-08118-L	EXIT SIGN, LED UNIVERSAL MOUNT LED	2	NA	CEILING		120	3	PENDANT MOUNT FIXTURE +9" A.F.F. TO BOTTOM
A,B	2	SITE LIGHT	LSI INDUSTRIES MRM-LED-24L-SIL-FT-40-70CRI	LED AREA LIGHTS FORWARD THROW, BRONZE FINISH	1	NA	EXISTING POLE	FIELD VERIFY	208	187	FIELD VERIFY MOUNTING OPTIONS SEE CIVIL PLANS FOR POLE DETAILS
A6	-	SITE POLE	LSI INDUSTRIES 4SQB3-S07G-25-D180-BRZ	4" SQ 7' GPOLE FT D180 VERIFY HEIGHT W/ BASE	-	NA	POLE		-	-	SEE CIVIL PLANS FOR POLE DETAILS
C,D	-	SITE LIGHT	LSI INDUSTRIES MRM-LED-24L-SIL-F-40-70CRI	LED AREA LIGHTS FORWARD THROW, BRONZE FINISH	1	NA	POLE	SEE CAPITOL LIGHTING DETAILS	208	374	SEE "A6" POLE. FIELD-VERIFY SEE CIVIL FOR DETAILS
E3	1	OFFICE	EVENLITE PW12-LC-V1-TB	BATTERY BACK-UP/INVERTER	-	NA	-	-	120	-	CONVERTS STANDARD FIXTURES TO EMER.

NO.	QUANTITY	LOCATION	MFR / CATALOG NUMBER	DESCRIPTION	LAMP #	BALLAST TYPE	MOUNTING TYPE	HT.	VOLT	WATT	REMARKS	
C1B	9	DINING/ RESTROOM	TCP: LED14DR5630KB95 ELITE HOUSING: B6IC-AT-P-CL-BK	RECESSED LED DOWNLIGHT	1	LED	RECESSED	DROP CLG	120	14		
C1BE	5	DINING/ RESTROOM	TCP: LED14DR5630KB95 ELITE HOUSING: B6IC-AT-P-CL-BK	RECESSED LED DOWNLIGHT	1	LED	RECESSED	DROP CLG	120	14	FIXTURE TO BE WIRED THRU INVERTER "E3"	
C1W	0	DINING	TCP: LED14DR5630KB95 ELITE HOUSING: E45180172	RECESSED LED DOWNLIGHT	1	LED	RECESSED	HARD CLG	120	14		
F2	2	DINING	SPECTRUM LIGHTING - SPCO310LEDXT10L27KWDE1 GL CP13 PM38" MB 3	DINING PENDANT	1	9W LED	NA	PENDANT	BOT. @ 6'-0" A.F.F.	120	9	
F6	7	DINING	KICHLER - 438520Z, GLASS PENDANT W/OLDE BRONZE FINISH	DINING ROOM PENDANT	1	6W LED	NA	PENDANT	BOT. @ 6'-0" A.F.F.	120	100	LAMP (100W MAX) EQ LED
F7	4	DINING	HI-LITE HI-15114-96/CB8-96/INC	DINING ROOM PENDANT	1	11W LED A19 LAMP	NA	PENDANT	6'-8" A.F.F.	120	60	LAMP (60W) EQ WARM WHITE (2700K), LED
D5	0	EXTERIOR WALL (LED OPTION)	PROGRESS LTG - P5642-20 LENS P8798-31	BRONZE 6" UP/DOWN CYL.	2	(2) TCP L14PAR38 D30KFLW	NA	CENTER OF BRACKET AT 14'-0" A.F.F.	120	36	BY SIGN VENDOR	
G1	0	EXTERIOR SLAT WALL	CONTECH # TLTO-12V-2-WW-16CR	OUTDOOR LED STRIP LIGHT	-	LED	NA		120	1.8/FT		
G3	0	COLOR CHANGING LIGHT WALL	LED POWER #HB-6W/ACCESSORIES	DINING ROOM LED STRIP	-	LED	NA		120	96		
WP1	0	EXTERIOR WALL	LUMARK (EATON) LDWP-GL-3B-120V	LED WALL PACK	1	LED	WALL	8'-6"	120	27		

LIGHTING FIXTURE SCHEDULE **C**

KEY NOTES **B**