

THE DEDICATED POS POWER CIRCUIT REQUIRES AN ISOLATED GROUND IN ADDITION TO THE NORMAL COMMON BUILDING GROUND. THE ISOLATED GROUND WIRE SERVES TWO PURPOSES:

- * AS A SAFETY PATH TO GROUND.
- * AS A ZERO REFERENCE POINT FOR ALL POS DIGITAL LOGIC.

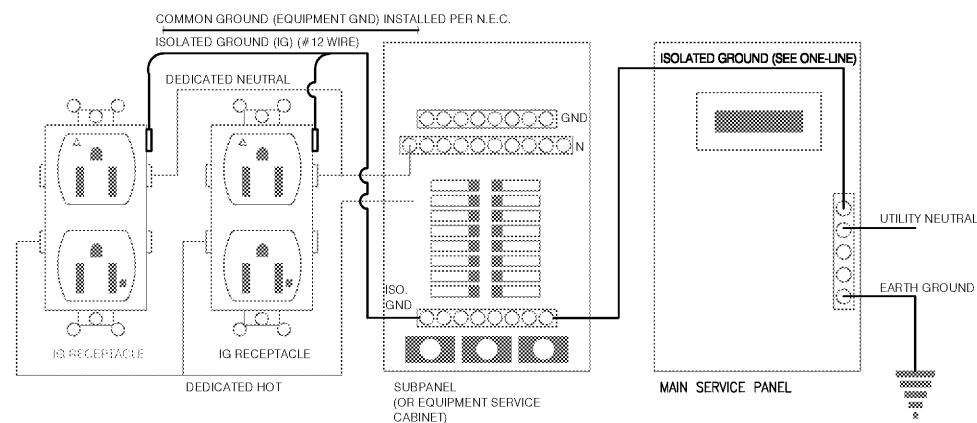
THE GROUND MUST EXHIBIT THE LOWEST POSSIBLE IMPEDANCE TO MINIMIZE VOLTAGE TRANSIENTS AND NOISE.

BE SURE TO:

- * USE AN INSULATED CONDUCTOR FOR THE ISOLATED GROUND WIRE.
- * RUN THE ISOLATED GROUND WIRE THROUGH THE SAME CONDUIT AS THE HOT AND NEUTRAL WIRES.
- * INSTALL ONLY ISOLATED GROUND (IG) TYPE RECEPTACLES.
- * CONNECT THE ISOLATED GROUND WIRE TO BUILDING GROUND ONLY AT THE MAIN SERVICE PANEL.
- * VERIFY THAT IG RECEPTACLES PRE-WIRED IN OWNER SUPPLIED EQUIPMENT HAVE A TRUE ISOLATED GROUND THAT CAN BE TRACED BACK TO THE BUILDING GROUND AT THE MAIN SERVICE PANEL/SWITCH.

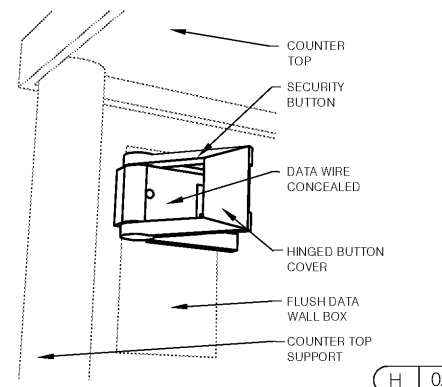
DO NOT CONNECT THE ISOLATED GROUND WIRE TO THE CONDUIT, JUNCTION BOXES, THE FRAME ON A SUBPANEL, OR ANY OTHER METAL SURFACE.

DEDICATED CIRCUITS: DEDICATED CIRCUITS REQUIRE A DEDICATED HOT AND A DEDICATED NEUTRAL THAT ARE NOT SHARED WITH ANY OTHER CIRCUITS. IG RECEPTACLES MUST BE "PHASE ALIGNED" WITH THE "B" PHASE OF SUBPANEL IN WHICH IT IS INSTALLED.

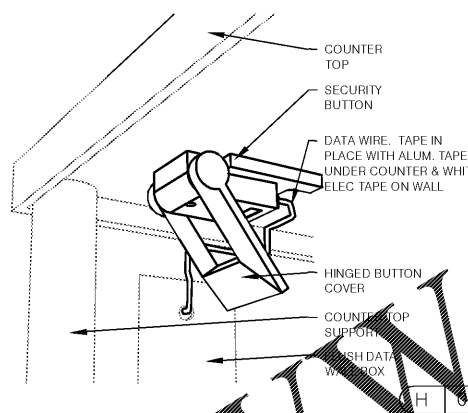


NOTE: USE GFCI BRANCH CIRCUIT BREAKERS FOR ISOLATED GROUND OUTLET CIRCUITS.

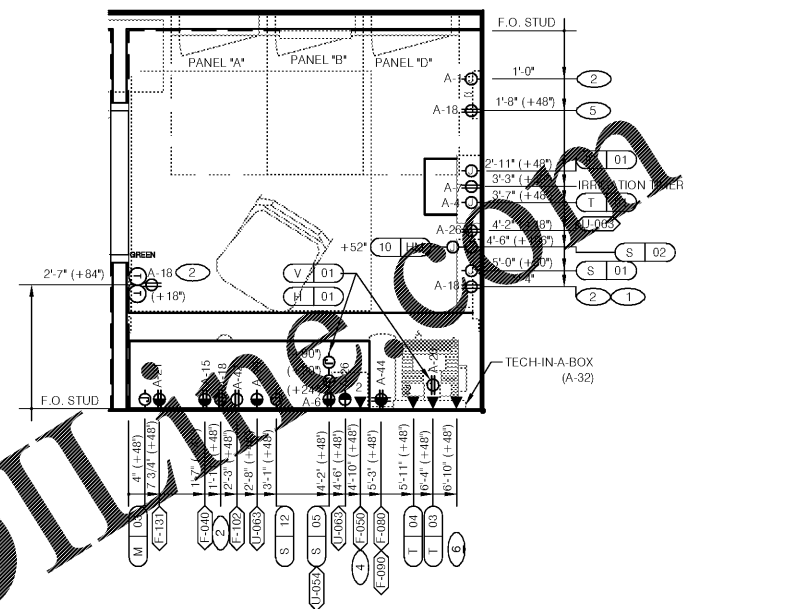
P.O.S. ISOLATED GROUND SYSTEM N.T.S. **F**



SECURITY BUTTON ON WALL N.T.S. **C**

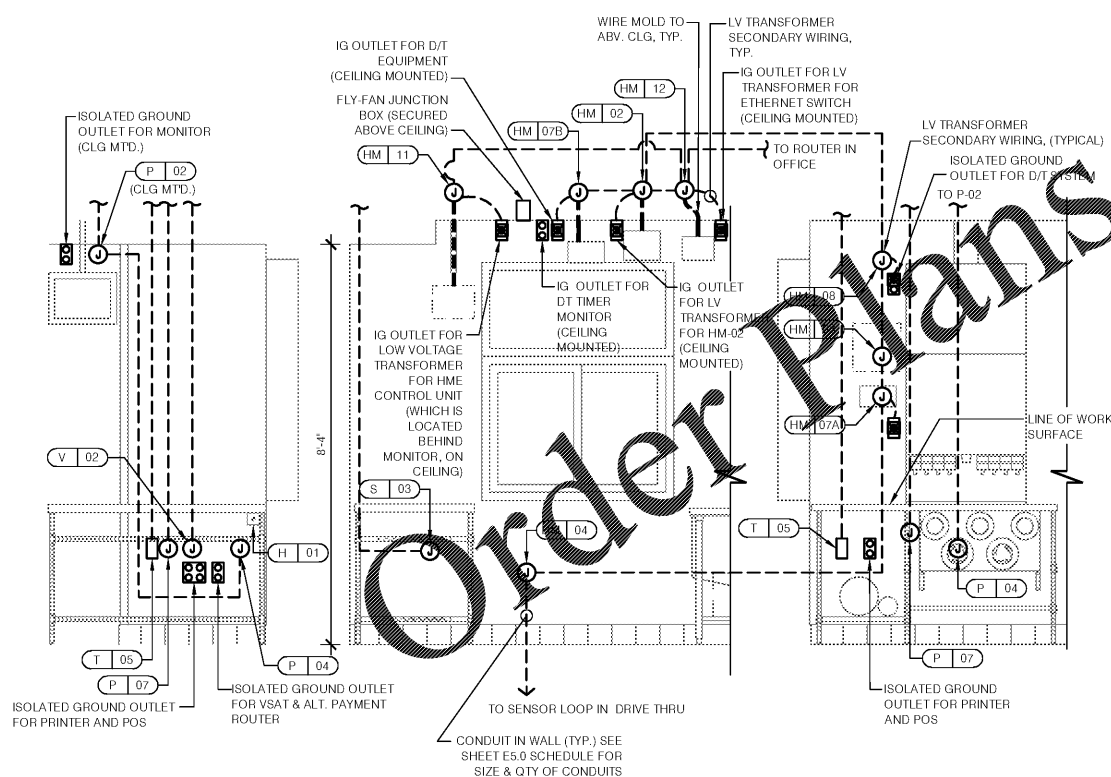


SECURITY BUTTON UNDER COUNTER N.T.S. **D**



REFER TO COMMUNICATIONS SCHEDULE ON SHEET E5.0 FOR EQUIPMENT DESCRIPTIONS/MOUNTING HEIGHTS.

ENLARGED POWER AND COMMUNICATIONS PLAN (OFFICE) 1/2" = 1'-0" **B**



REFER TO COMMUNICATIONS SCHEDULE ON SHEET E5.0 FOR EQUIPMENT DESCRIPTIONS/MOUNTING HEIGHTS.

DRIVE-THRU COMPONENT RELATION DETAIL 1/2" = 1'-0" **G**

1. THERMOSTAT CONTROLS
2. CONTROLLED RECEPTACLE (TBCCB OPTION): CIRCUIT THROUGH TBCCB CONTROL BOX (INSTALLED IN THE OFFICE) AND CONTROLLED VIA OCCUPANCY/VACANCY SENSOR, BUILT INTO FRONT OF THE CONTROL BOX. SEE E&X SERIES SHEETS FOR ADDITIONAL INFORMATION. RECEPTACLE SHALL BE PERMANENTLY MARKED, U.L. LISTED AND PROVIDE INDICATION OF CONTROLLED RECEPTACLE, FOR EACH REQUIRED RECEPTACLE.
3. NOT USED.
4. PHONE JACK FOR MODEM.
5. LOCATION OF TACO BELL COMBINED CONTROL BOX - TBCCB. CONTRACTOR TO VERIFY (IN THE FIELD). CONSIDER OPERATOR NEED TO ACCESS SWITCHES ON THE FRONT OF THE CONTROL BOX AND BUILT-IN OCCUPANCY SENSOR FOR MANAGERS OFFICE.
6. DATA JACK FOR TECH-IN-A-BOX WITH 2 PORTS.

△	
△	
△	
△	
△	
△	
△	
△	
△	

CONTRACT DATE: 11/17/20
 BUILDING TYPE: ENDEAVOR MED 40
 PLAN VERSION: SEPT 2020
 BRAND DESIGNER: 200109
 SITE NUMBER: 297222
 STORE NUMBER: 003717
 ARCVISION: 200188

TACO BELL

6151 HWY 278 NW
 COVINGTON, GA 30014



**ENLARGED
 POWER PLAN
 AND DETAILS**

E3.1

NOT USED N.T.S. **E**

KEY NOTES N.T.S. **A**