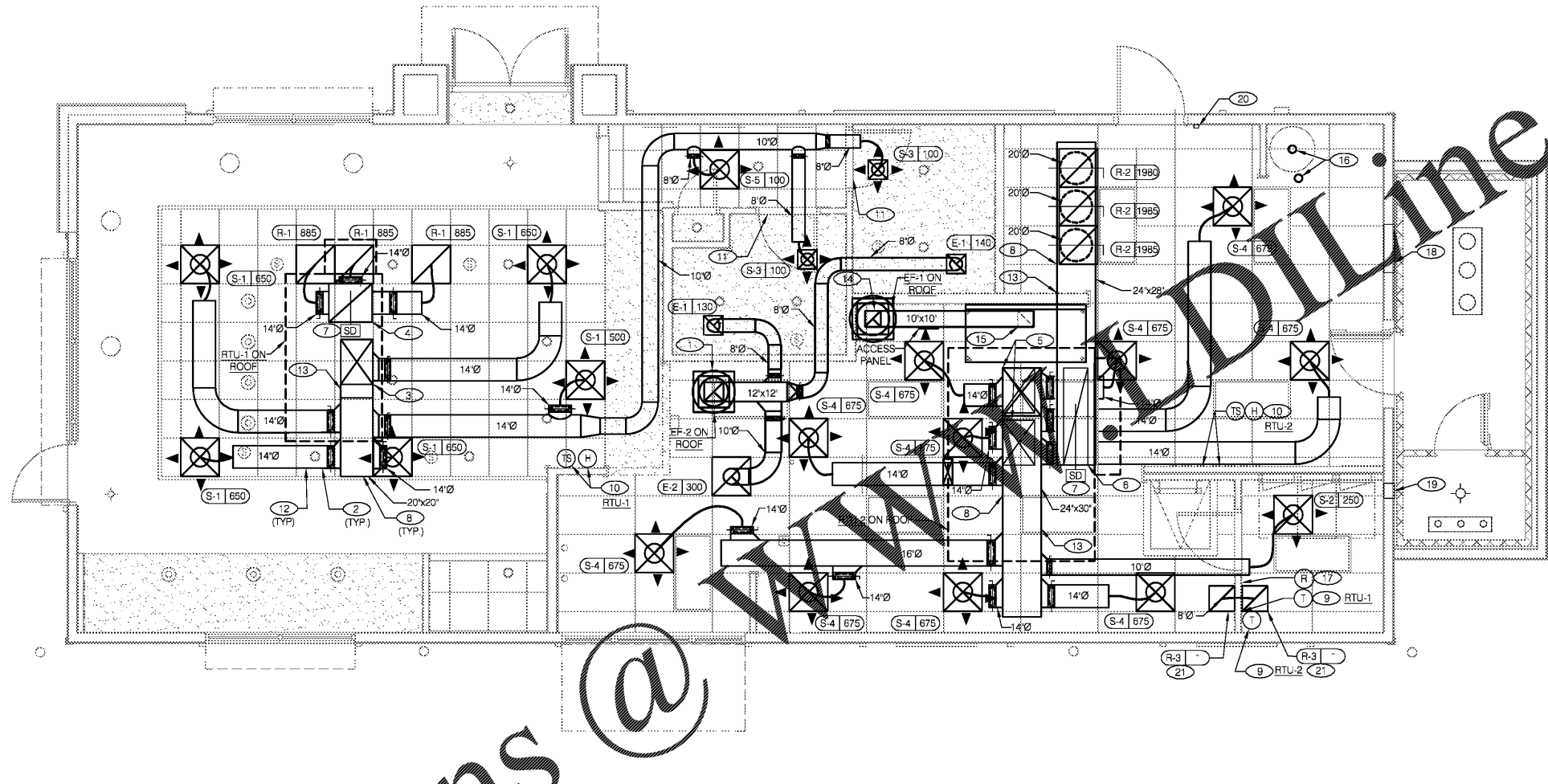


COVER ALL HVAC DUCT SYSTEM OPENINGS TO PROTECT FROM CONSTRUCTION DUST AND DEBRIS UNTIL CONSTRUCTION IS COMPLETE. IF THE HVAC SYSTEM IS OPERATED BEFORE CONSTRUCTION IS COMPLETE, PROVIDE MERV8 FILTERS AT ALL AIR INTAKES INSIDE THE BUILDING.



Order Plans @

DUCT AND DIFFUSER PLAN 1/4"=1'-0" A

1. DINING ROOM LIGHT FIXTURE LOCATIONS ARE CRITICAL. COORDINATE DUCTWORK LOCATIONS SO AS NOT TO CONFLICT WITH LIGHT FIXTURE LOCATIONS.
2. THERMOSTATS SHALL BE PROGRAMMABLE THERMOSTAT WITH SUBBASE, REMOTE TEMPERATURE SENSOR, AND REMOTE HUMIDITY SENSOR. (PROVIDED WITH TRANE PACKAGE).
3. HUMIDITY SENSOR APPLICATION IS VARIABLE PER SITE SPECIFIC CONDITIONS. REFER TO HVAC UNIT SCHEDULE, 1/M1 0, FOR APPLICATION CONDITIONS.
4. COORDINATE DUCTWORK LOCATIONS WITH LIGHTING AND STRUCTURAL.

- 1 12"x12" EXHAUST AIR DUCT UP THROUGH ROOF TO EF-2.
- 2 SEE DETAIL 6 ON DRAWING M4.0 FOR SUPPLY AIR TAKE-OFF TO CEILING DIFFUSERS RETURN OR EXHAUST AIR TAKE-OFFS SHALL BE SIMILAR.
- 3 20"x28" SUPPLY AIR DUCT UP. CONNECT TO SUPPLY AIR PLENUM AT ROOFTOP UNIT RTU-1.
- 4 28"x24" RETURN AIR DUCT UP. CONNECT TO RETURN AIR PLENUM AT ROOFTOP UNIT RTU-1.
- 5 (2)20"x28" SUPPLY AIR DUCT UP. CONNECT TO SUPPLY AIR PLENUM AND AT ROOFTOP UNIT RTU-2.
- 6 16"x60" RETURN AIR DUCT UP. CONNECT TO RETURN AIR PLENUM AT ROOFTOP UNIT RTU-2.
- 7 FURNISH AND INSTALL SMOKE DETECTOR IN THE RETURN AIR DUCT, IN ACCORDANCE WITH LOCAL CODES. DUCT SMOKE DETECTOR WIRED BY ELECTRICAL CONTRACTOR. SEE SHEET E6.0.
- 8 INSULATE SUPPLY AND RETURN AIR DUCTWORK WITH 2" THICK (0.75 LB. DENSITY) EXTERNAL INSULATION. MIN. VALUE R-6.
- 9 LOCATE THERMOSTAT CONTROLS ON WALL IN OFFICE AT 48" A.F.F. COORD LOCATION WITH LIGHT SWITCHES.
- 10 MOUNT THERMOSTAT REMOTE AND HUMIDITY SENSORS AT 60" ABOVE FINISHED FLOOR.
- 11 UNDERCUT RESTROOM DOORS MIN. 3/4" FOR MAKE-UP AIR.
- 12 RUN DUCT THROUGH OPEN WEBBING OF ROOF JOISTS (WHERE POSSIBLE). COORDINATE WITH TRUSS DESIGN PRIOR TO DUCTWORK FABRICATION.
- 13 RUN DUCTWORK BETWEEN TRUSSES AS HIGH AS POSSIBLE BETWEEN ROOF JOISTS.

- 14 10"x10" EXHAUST AIR DUCT DOWN AND TRANSITION TO FIELD CUT EXHAUST CONNECTION AT HOOD.
- 15 EXHAUST DUCT SHALL RUN BETWEEN ROOF TRUSS TO CONNECT TO ROOF EXHAUST FAN EF-1. SEE HOOD DETAILS ON DRAWING M3.0 SEE DETAIL 9 ON SHEET M4.0 FOR FIRE PROTECTION OF DUCT WORK. SEE DETAIL 11 ON SHEET M4.0 FOR EXHAUST DUCT TRANSITION. PROVIDE ACCESS PANEL AFTER 90 DEGREE TURN IN DUCT.
- 16 FURNISH AND INSTALL 3" PVC WATER HEATER INTAKE AND FLUE VENT TERMINATION ON ROOF. INSTALL AS PER MANUFACTURER'S DIRECTION. VENT DISCHARGE SHALL BE AT LEAST 10'-0" AWAY FROM ANY OUTSIDE AIR INTAKE AND AWAY FROM ANY ROOF CRICKETS. ADJUST DISCHARGE LOCATION AS REQUIRED.
- 17 NEW SMOKE DETECTOR RESET SWITCH WITH KEY. MFR. IS 'SYSTEM SENSOR' MODEL # RT5151 KEY. MOUNT NEXT TO THERMOSTATS @ 48" A.F.F. - INSTALL PER MFR. SPECIFICATIONS.
- 18 ACCESS OPENING TO SPACE ABOVE WALK-IN. SEE SHEET A7.1.
- 19 AIR TRANSFER GRILLS.
- 20 LOCATE NEW ANSUL PULL STATION FOR TYPE I EXHAUST HOOD 10'-20" FROM HOOD. INSTALL 48" A.F.F.
- 21 PROVIDE TRANSFER AIR GRILLES AS REQUIRED TO RETURN AIR FROM OFFICE TO RTU-2 AS SHOWN.

NOT USED F

GENERAL NOTES E

KEY NOTES B

CONTRACT DATE: 11/17/20
 BUILDING TYPE: ENDEAVOR MED 40
 PLAN VERSION: SEPT 2020
 BRAND DESIGNER: 200109
 SITE NUMBER: 297222
 STORE NUMBER: 003717
 ARCVISION: 200188

TACO BELL
 6151 HWY 278 NW
 COVINGTON, GA 30014

ENDEAVOR
 'GO MOBILE'

DUCT AND DIFFUSER PLAN
M2.0

ARCVISION
 INCORPORATED
 ARCHITECTURE • ENGINEERING • STORE PLANNING
 SAINT LOUIS / DALLAS / LAS VEGAS / ORLANDO
 1950 CRAIG ROAD, SUITE 300 ST. LOUIS, MO 63146
 PH. (314) 415-2400 FAX (314) 415-2300
 www.arcv.com