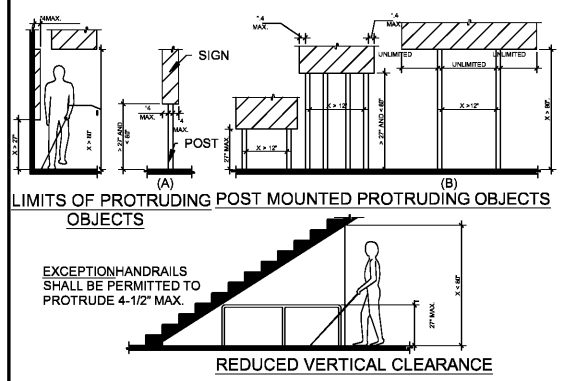
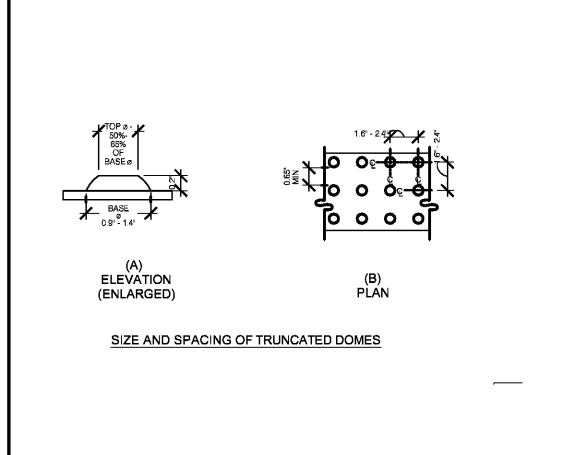


CLEAR WIDTH 1/4" = 1'-0" **17**



PROTRUDING OBJECTS 3/16" = 1'-0" **13**

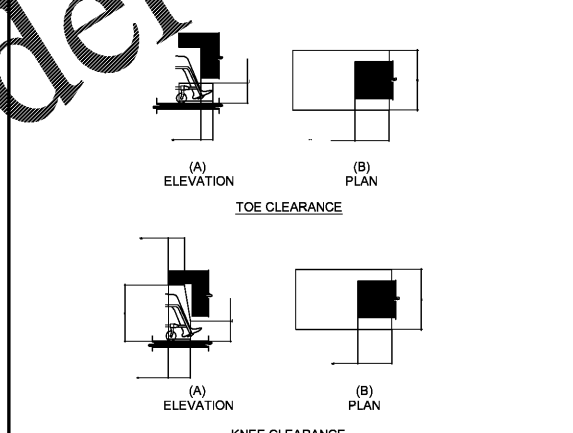


DETECTABLE WARNINGS 3" = 1'-0" **14**

PARKING SPACES

TOTAL NUMBER OF PARKING SPACES PROVIDED IN PARKING FACILITY	MINIMUM NUMBER OF REQUIRED ACCESSIBLE PARKING SPACES
1 TO 25	1
26 TO 50	2
51 TO 75	3
76 TO 100	4
101 TO 150	5
151 TO 200	6
201 TO 300	7
301 TO 400	8
401 TO 500	9
501 TO 1000	10
1001 AND OVER	2% PLUS ONE FOR EACH 100, OR FRACTION THEREOF, OVER 1000

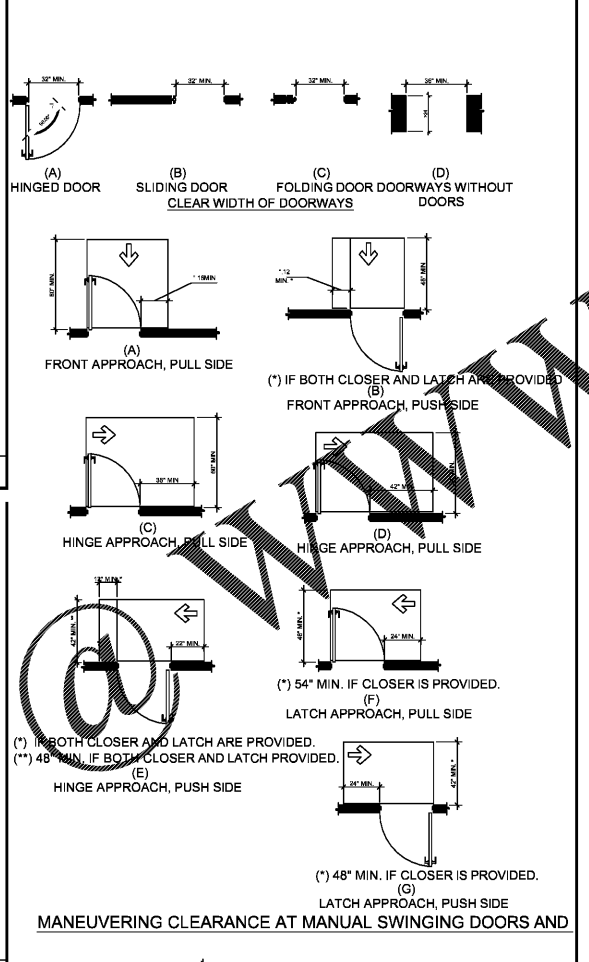
PARKING SPACES 6" = 1'-0" **15**



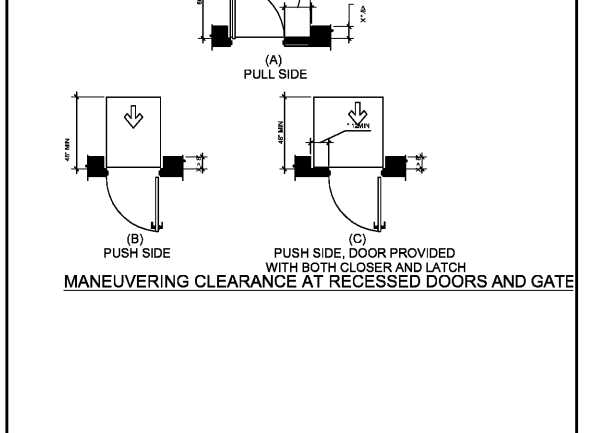
KNEE AND TOE CLEARANCE 1/4" = 1'-0" **16**

NOTES:

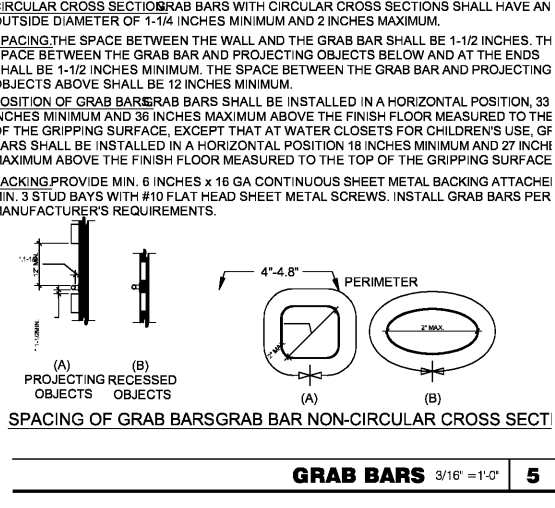
- FLOOR OR GROUND SURFACE WITHIN REQUIRED MANEUVERING CLEARANCES SHALL COMPLY WITH [FLOOR OR GROUND SURFACES & CHANGES IN LEVEL] DETAIL AND SHALL SLOPE NOT STEEPER THAN 1:48. CHANGES IN LEVEL ARE NOT PERMITTED AT DOOR LANS.
- THRESHOLDS, IF PROVIDED AT DOORWAYS SHALL BE 1/2" HIGH MAX. RAISED THRESH AND CHANGES IN LEVEL AT DOORWAYS SHALL COMPLY WITH [FLOOR OR GROUND SURF, CHANGES IN LEVEL] DETAIL.
- HANDLES, PULLS, LATCHES, LOCKS AND OTHER OPERABLE PARTS ON DOORS AND GATE SHALL BE OPERABLE WITH ONE HAND AND SHALL NOT REQUIRE TIGHT GRASPING, PINCH TWISTING OR THE WRIST.
- THE FORCE REQUIRED TO ACTIVATE OPERABLE PARTS SHALL BE 5 LBS (22.5 N) MAX.
- OPERABLE PARTS OF DOOR HARDWARE SHALL BE 34" MIN. AND 48" MAX. ABOVE THE FLOOR OR GROUND.
- WHERE SLIDING DOORS ARE IN THE FULLY OPEN POSITION, OPERATING HARDWARE SHALL BE EXPOSED AND USABLE FROM BOTH SIDES.
- DOOR AND GATE CLOSERS SHALL BE ADJUSTED SO THAT FROM AN OPEN POSITION C THE TIME REQUIRED TO MOVE THE DOOR TO A POSITION OF 12" FROM THE LATCH IS 5 SECONDS MIN.
- DOOR AND GATE SPRING HINGES SHALL BE ADJUSTED SO THAT FROM THE OPEN POS OF 70% THE DOOR OR GATE SHALL MOVE TO THE CLOSED POSITION IN 1.5 SECONDS MIN.
- THE FORCE FOR PUSHING OR PULLING OPEN A DOOR OR GATE SHALL BE AS FOLLOWS:
 - INTERIOR HINGED DOORS AND GATES: 5 LBS (22.5 N) MAX.
 - SLIDING OR FOLDING DOORS: 5 LBS (22.5 N) MAX.
 - REQUIRED FIRE DOORS: THE MINIMUM OPENING FORCE ALLOWABLE BY THE APPROPRI ADMINISTRATIVE AUTHORITY, NOT TO EXCEED 15 LBS (66.7 N).
 - EXTERIOR HINGED DOORS: 5 LBS (22.5 N) MAX.
- SWINGING DOOR AND GATE SURFACES WITHIN 10" OF THE FINISH FLOOR OR GROUND MEASURED VERTICALLY SHALL HAVE A SMOOTH SURFACE ON THE PUSH SIDE EXTENDING FULL WIDTH OF THE DOOR OR GATE. PARTS CREATING HORIZONTAL OR VERTICAL JOINTS THESE SURFACE SHALL BE WITHIN 1/16" OF THE SAME PLANE AS THE OTHER AND BE FREE SHARP OR ABRASIVE EDGES. CAVITIES CREATED BY ADDED KICK PLATES SHALL BE CAPED.
- WHERE AUTOMATIC AND POWER-ASSISTED DOORS AND GATES WITHOUT STANDBY P ARE PART OF A MEANS OF EGRESS THE CLEAR BREAK OUT OPENING AT SWINGING OR S DOORS AND GATES SHALL BE 32" MIN. WHEN OPERATED IN EMERGENCY MODE.



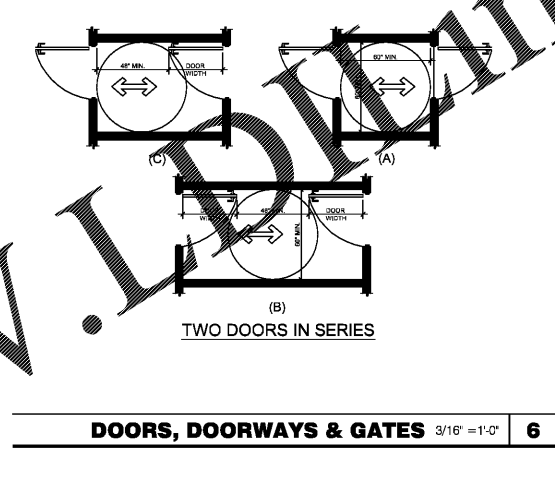
DOORS, DOORWAYS & GATES 3/16" = 1'-0" **12**



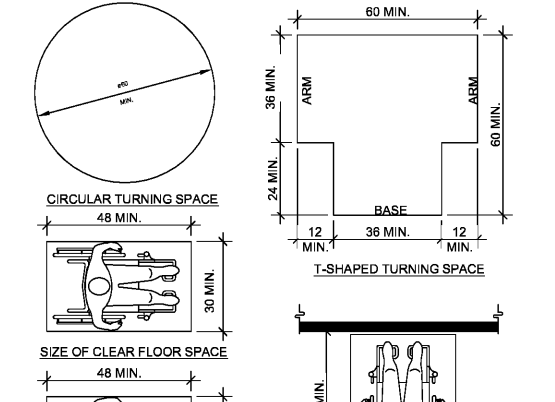
DOORS, DOORWAYS & GATES 3/16" = 1'-0" **12**



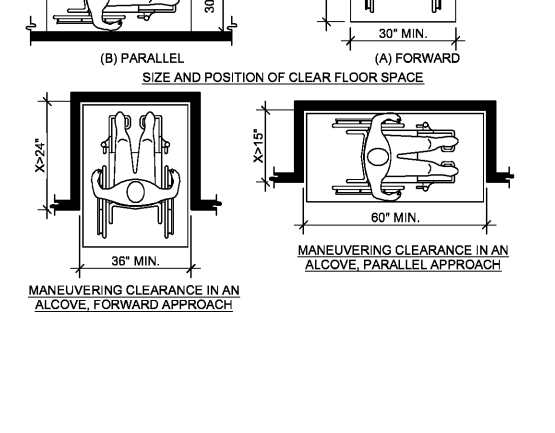
CLEAR FLOOR OR GROUND SPACE 3/8" = 1'-0" **8**



DOORS, DOORWAYS & GATES 3/16" = 1'-0" **6**



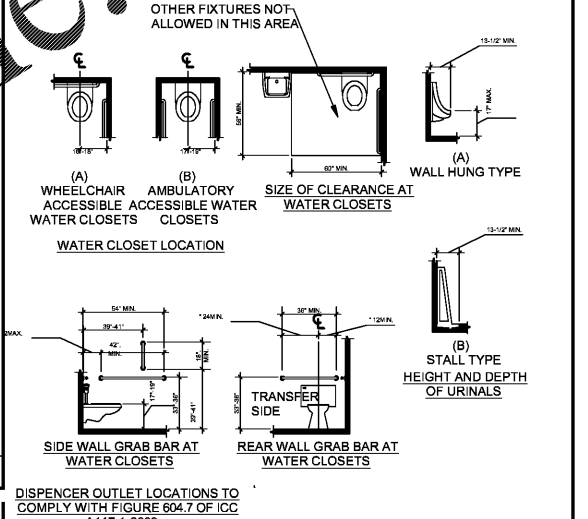
CLEAR FLOOR OR GROUND SPACE 3/8" = 1'-0" **8**



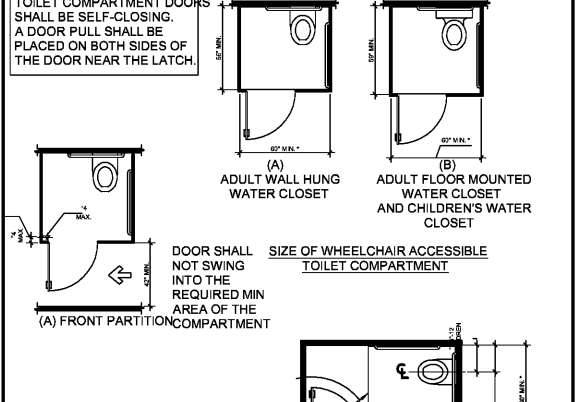
CLEAR FLOOR OR GROUND SPACE 3/8" = 1'-0" **8**

ACCESSIBILITY NOTES

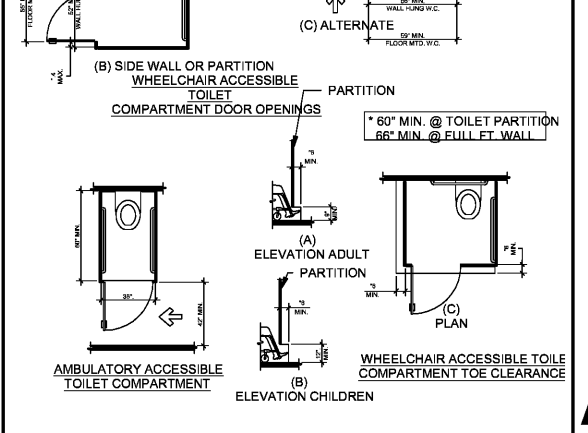
- THE ACCESSIBILITY GUIDELINES AND CODES MENTIONED BELOW REFER TO ALL APPLICABLE LOCAL/STATE BUILDING CODES REFERENCED ON THE PROJECT DATA SHEET OF THIS SET IN ADDITION TO THE FEDERAL REQUIREMENTS OF THE ADA (THE AMERICANS WITH DISABILITIES ACT).
- DETAILS ON THIS SHEET ARE FOR REFERENCE ONLY. REFER TO THE ACCESSIBILITY GUIDELINES AND CODES FOR ALL ACCESSIBILITY REQUIREMENTS.
- THE GENERAL CONTRACTOR SHALL BECOME FAMILIAR WITH THE ACCESSIBILITY GUIDELINES AND CODES.
- ANY DISCREPANCY CONTAINED HEREIN DOES NOT RELIEVE THE GENERAL CONTRACTOR OR OWNER FROM COMPLYING WITH THE ACCESSIBILITY GUIDELINES AND CODES.



WC AND TOILET COMPARTMENTS 3/16" = 1'-0" **4**



WC AND TOILET COMPARTMENTS 3/16" = 1'-0" **4**



WC AND TOILET COMPARTMENTS 3/16" = 1'-0" **4**

Order Plans

FREDERICK J. GOGLIA
 ARCHITECT, NCARB, FIDI
 1850 CRAIG ROAD, SUITE 300
 ST. LOUIS, MO 63146
 PH: (634) 415-2400 FAX (634) 415-2400
 WWW.FRJGOGLIA.COM

CONTRACT DATE: 11/17/20
 BUILDING TYPE: ENDEAVOR MED 40
 PLAN VERSION: SEPT 2020
 BRAND DESIGNER: 200109
 SITE NUMBER: 297222
 STORE NUMBER: 003717
 REVISION: 200188

TACO BELL
 6151 HWY 278 NW
 COVINGTON, GA 30014



ENDEAVOR
 'GO MOBILE'

ACCESSIBILITY REQUIREMENTS

ADA 1.2