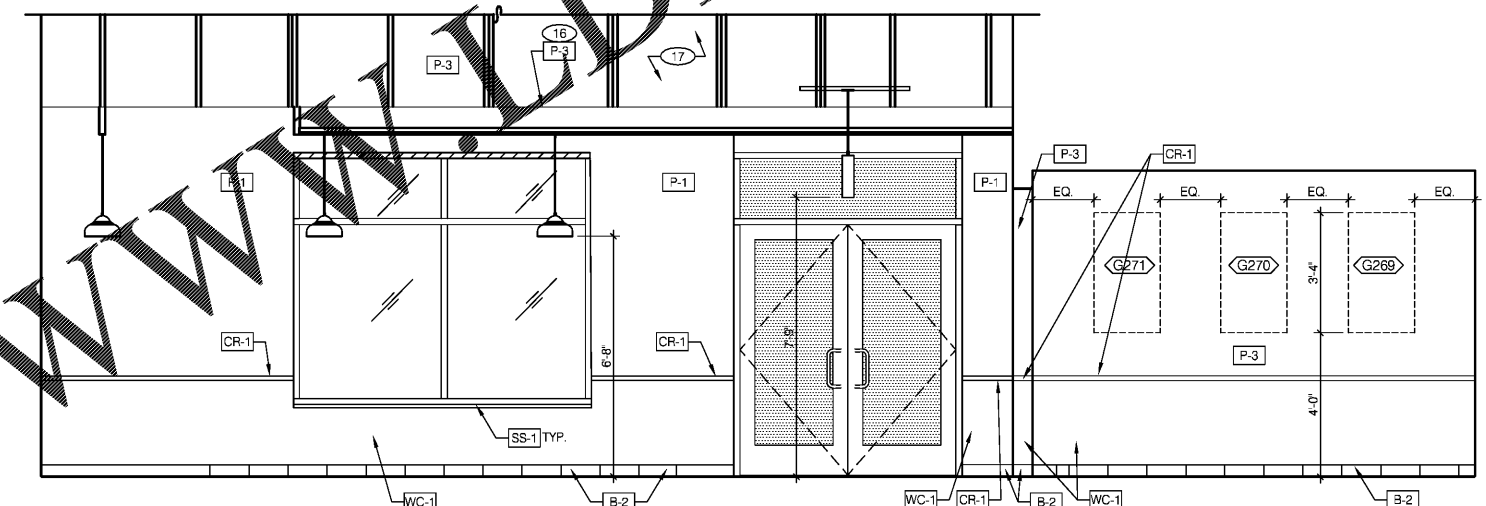
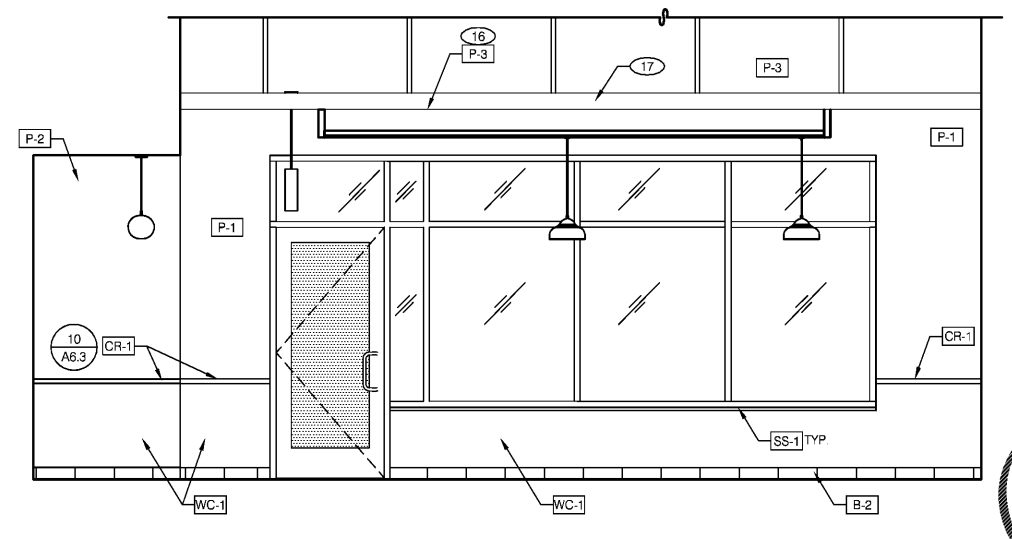


- 3 NOT USED
- 7 6" X 6" 18 GAUGE STAINLESS STEEL CH-ASE
- 9 *PLEASE ASK IF YOU NEED ASSISTANCE* SIGN SMALLWARE PACKAGE
- 15 SS CORNER/ END WALL CHANNEL GUARD, FULL HEIGHT. ALCOVE MURAL, APPLY TO BOTH- END WALLS AND CEILING OF ALCOVE
- 16 PAINT LINE.
- 17 STRUCTURAL JOIST. REFER TO STRUCTURAL DRAWINGS FOR ADDITIONAL INFORMATION

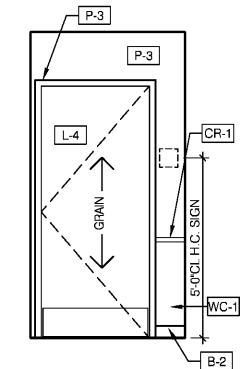
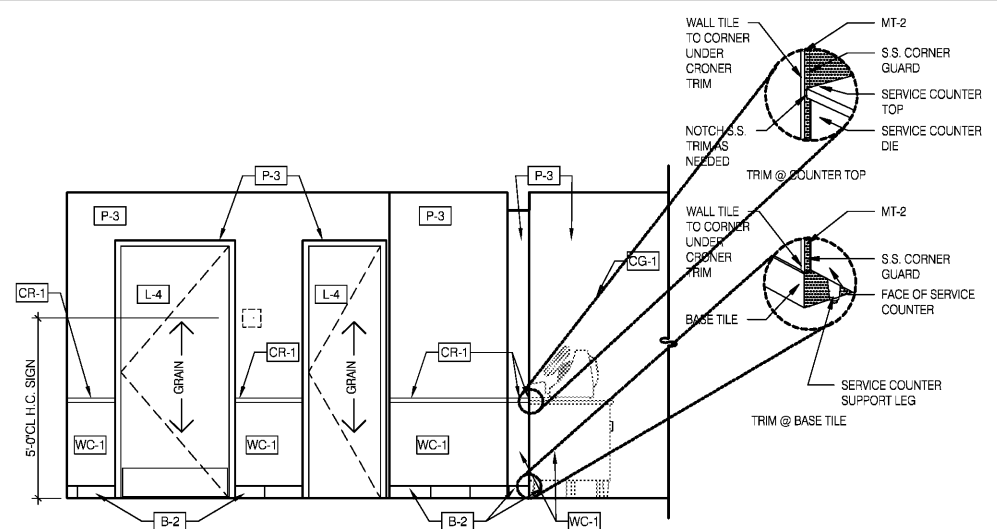
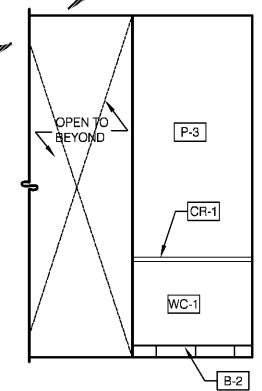
DINING 3/8" = 1'-0" B

KEY NOTES A



DINING 3/8" = 1'-0" C

Order Plans @



SERVING 3/8" = 1'-0" E

6

5

PASSAGE 3/8" = 1'-0" D

FREDERICK J. GOGLIA
 ARCHITECT, NCARB, FDI
 1850 CRAIG ROAD, SUITE 300
 ST. LOUIS, MO 63146
 PH. (314) 415-9400 FAX (314) 415-2800
 www.rjgvc.com

CONTRACT DATE: 11/17/20
 BUILDING TYPE: ENDEAVOR MED 40
 PLAN VERSION: SEPT 2020
 BRAND DESIGNER: 200108
 SITE NUMBER: 297222
 STORE NUMBER: 003717
 ARCVISION: 200188

TACO BELL
 6151 HWY 278 NW
 COVINGTON, GA 30014

TACO BELL
 ENDEAVOR
 'GO MOBILE'
 INTERIOR
 ELEVATIONS
 DINING
 ROOM
A8.0