

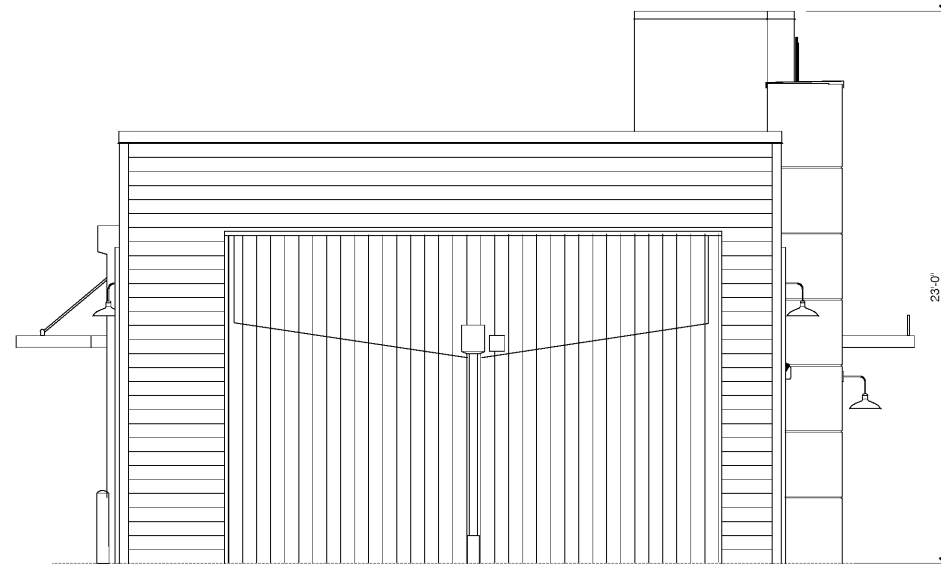
**RIGHT SIDE ELEVATION** 1/4" = 1'-0" **A**



**LEFT SIDE ELEVATION** 1/4" = 1'-0" **B**



**FRONT ELEVATION** 1/4" = 1'-0" **F**



**REAR ELEVATION** 1/4" = 1'-0" **E**

- 1 SOLID BLOCKING FOR FASTENERS AS REQUIRED FOR SIGN MOUNTING.
- 2 PROVIDE BLOCKING FOR CANOPY. SEE DETAIL 13/S4.3

**KEY NOTES** **C**

1. EXTEND BLOCKING AS REQUIRED TO FIT BETWEEN STUDS.
2. ELEVATION AT BOTTOM OF CANOPIES SHALL BE 9'-0" A.F.F. (U.N.O.).
3. COORDINATE SIGNAGE ELEMENTS and BLOCKING REQUIREMENTS WITH SIGNAGE VENDOR; SEE SCOPE OF WORK.
4. THIS SHEET IS TO INDICATE BLOCKING REQUIREMENTS FOR AWNINGS & CANOPIES. ADDITIONAL BLOCKING IS REQUIRED FOR OTHER ITEMS AS SHOWN ON OTHER DRAWINGS.
5. FOR CUPOLA ATTACHMENTS, SEE SHEET S3.0.

**GENERAL NOTES** **D**

**GEORGINA CORPORATION**  
 ARCHITECTURE / ENGINEERING / STORE PLANNING  
 SAINT LOUIS / DALLAS / LAS VEGAS / ORLANDO  
 1950 CRAIG ROAD, SUITE 300 ST. LOUIS, MO 63146  
 PH. (314) 415-2400 FAX (314) 415-2300 www.gev.com

**REGISTERED PROFESSIONAL ENGINEER**  
 PAUL G. SCOTT  
 No. 4202999

10/30/2020

PROJECT NUMBER 20-1272  
 PROJECT MANAGER RAD  
 PROJECT ENGINEER SA  
 PROJECT DRAFTER ATG

**CARUSO TURLEY SCOTT INC.**  
 consulting structural engineers  
 1215 N. Rio Salado Parkway  
 Suite 200  
 Tempe, Arizona 85281  
 (480) 774-1700  
 (480) 774-1701 FAX

- △
- △
- △
- △

CONTRACT DATE: XX/XX/20  
 BUILDING TYPE: ENDEAVOR MED 40  
 PLAN VERSION: SEPT 2020  
 BRAND DESIGNER: 200109  
 SITE NUMBER: 297222  
 STORE NUMBER: 003717

**TACO BELL**  
 6151 HWY 278 NW  
 COVINGTON, GA 30014

**TACO BELL**  
**ENDEAVOR**  
 "GO MOBILE"

**CANOPY/AWNING  
 BLOCKING  
 ELEVATIONS**

**S5.0**

Order Plans @ [www.lidline.com](http://www.lidline.com)