

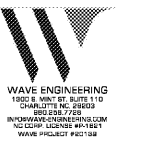


ROBERT JOHNSON
architects
1808 West Morehead St.
Charlotte, NC 28208
T 704 / 342.1058
F 704 / 342.3043

STAMPS



CONSULTANT



MIDSOUTH
CARPENTER'S
TRAINING
TRUST

La Vergne, TN

PROJECT NUMBER 1982
ISSUE DATE
FOR PERMIT 09.30.20

DRAWING DATA
DRAWN BY: GKG
CHECKED BY: MJS

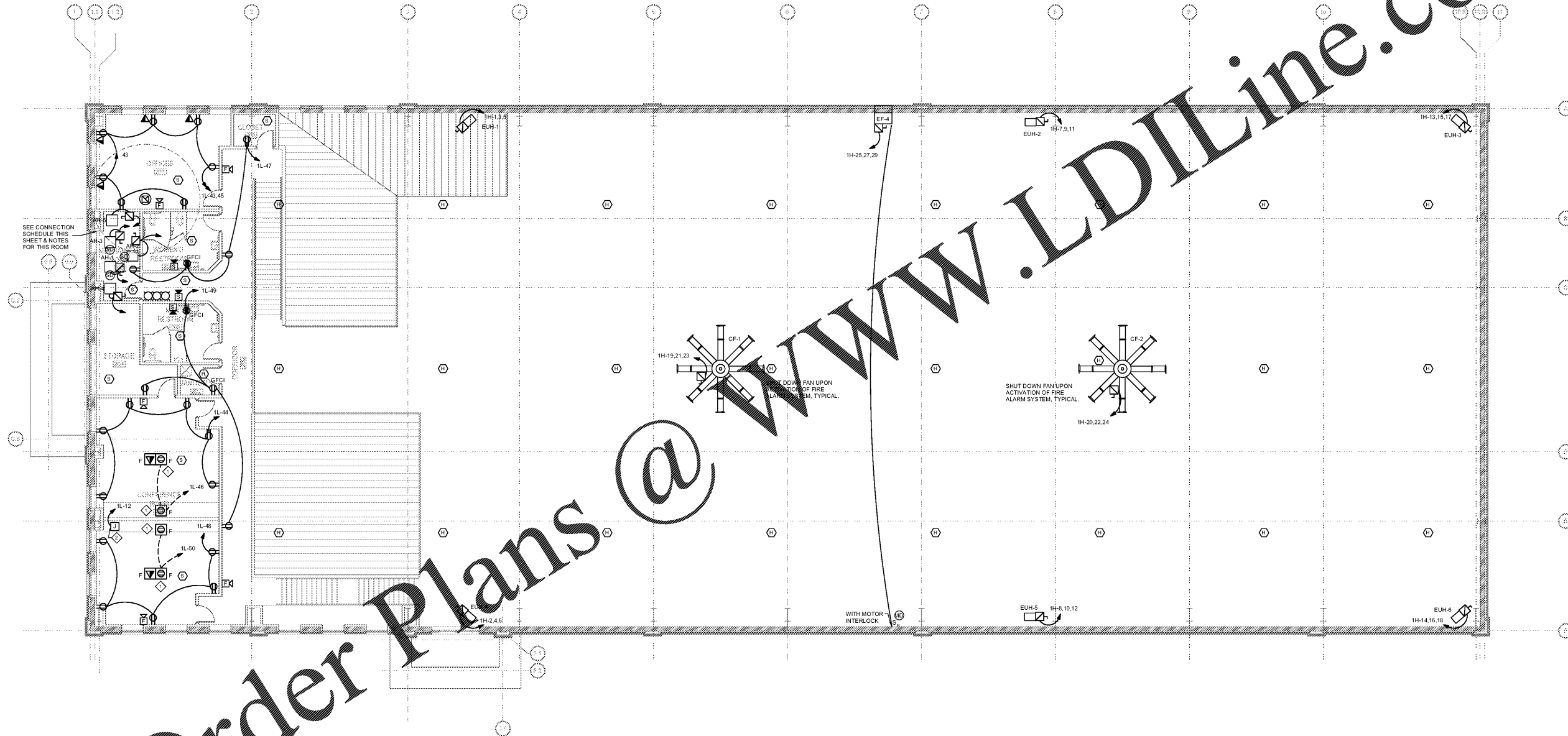
SHEET TITLE
POWER
MEZZANINE
PLAN

This drawing is the property of ROBERT JOHNSON ARCHITECTS, Inc. and is not to be reproduced or copied in whole or in part. It is only to be used for the project and is specifically identified herein and is not to be used on any other project. It is to be returned upon request.

SHEET NUMBER

E-2.2

Order Plans @ www.LDILine.com



1 POWER MEZZANINE PLAN
SCALE: 1/8" = 1'-0"

MECHANICAL ROOM 205 CONNECTION SCHEDULE:

AH-1:	1H-31.33.35
AH-2:	1H-37.39.41
AH-3:	1H-26.28.39
AH-4:	1H-32.34.36
AH-5:	1H-38.40.42

NOTE:
THE CONTRACTOR SHALL CLOSELY COORDINATE DISCONNECT LOCATIONS WITH MECHANICAL SHOP DRAWINGS, DUCTWORK AND FIELD CONDITIONS PRIOR TO ANY ROUGH-IN WORK AND ENSURE THAT NEC CLEARANCES ARE MET FOR DISCONNECTING MEANS.

- ◆ KEYED NOTES THIS SHEET
- COORDINATE ROUGH-IN WORK WITH ALL OWNER PRIOR TO ROUGH-IN. COMPLY WITH 2017 NEC 210.71(B)(2).
 - PROVIDE CONNECTION TO PARTITION DOOR AS REQUIRED FOR OPERATION. COORDINATE WITH SELECTED MANUFACTURER'S INSTALLATION INSTRUCTIONS. PROVIDE CONNECTION/CONDUIT FOR CONTROL. LOCATION TO BE DETERMINED IN FIELD WITH OWNER REPRESENTATIVE AND ARCHITECT.