



ROBERT JOHNSON
architects
1808 West Morehead St.
Charlotte, NC 28208
T 704 / 342.1058
F 704 / 342.3043

STAMPS



MIDSOUTH
CARPENTER'S
TRAINING
TRUST
La Vergne, TN

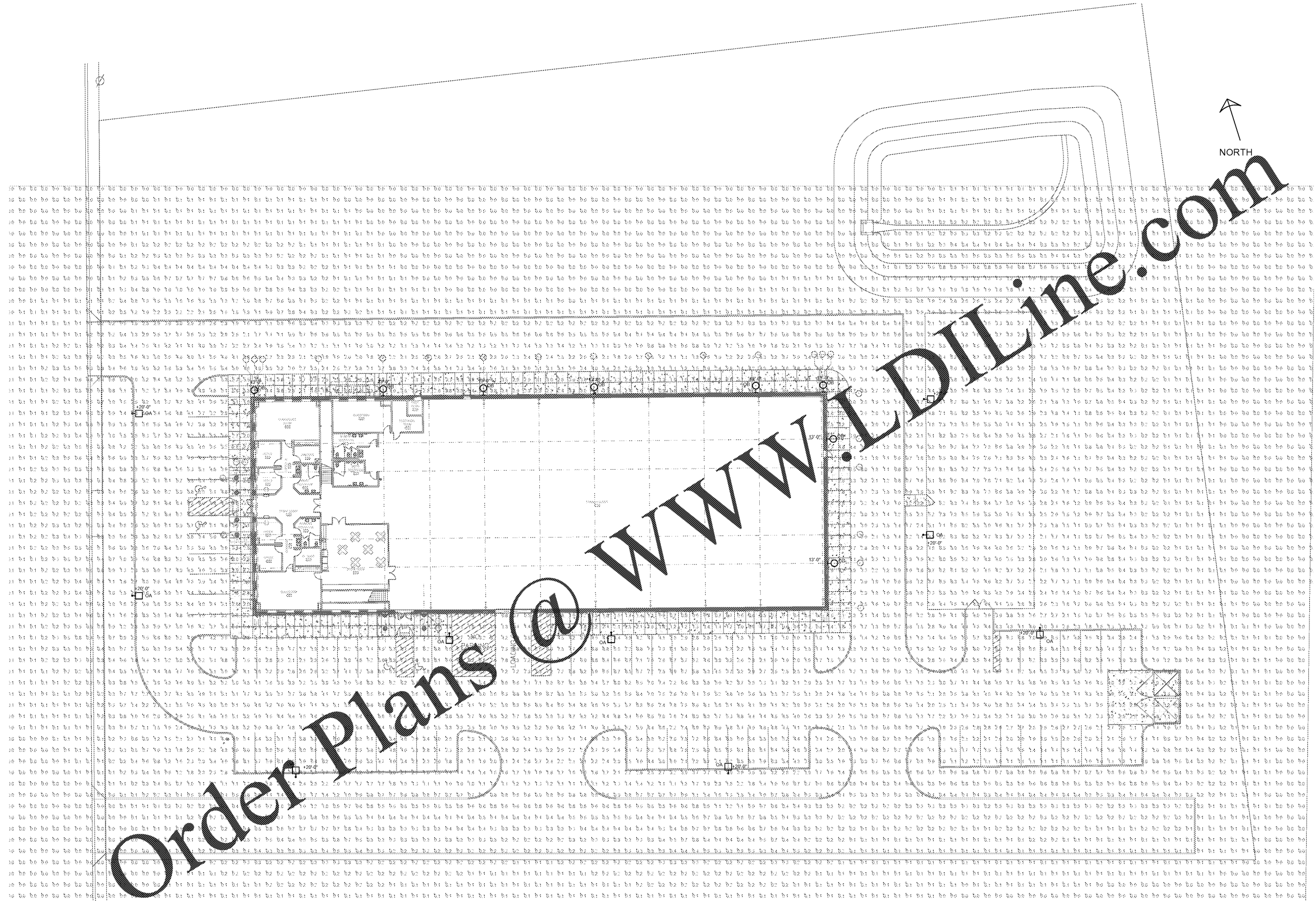
PROJECT NUMBER 1992
ISSUE DATE
FOR PERMIT 09.30.20

DRAWING DATA
DRAWN BY: GKG
CHECKED BY: MIS

SHEET TITLE
PHOTOMETRIC
SITE PLAN

SHEET NUMBER

E-1.0P



Order Plans @

1 PHOTOMETRIC SITE PLAN
SCALE: 1/16" = 1'-0"

Statistics					
Description	Symbol	Avg	Max	Min	Avg/Min
OVERALL CALC GRID	+	16 fc	22 fc	0.0 fc	N/A

Symbol	Label	Quantity	Manufacturer	Catalog Number	Description	Lamp	Number Lamps	File Name	Lumens Per Lamp	Light Loss Factor	Wattage
□	OA	9	NAL LIGHTING Fixtures, Government, Healthcare, Hotel, Industrial, Institutional, Manufacturing, Railway, Prison, Roadway, Sign, Sports, Street, Direct, Warehouse	AL 12-150L-240-4K-7-40W	AL TITLIDE 2.0	C-70-CR/DATA SHOWN B ABSOLUTE	1	AL 12-150L-240-4K-7-40W	2818	89	241
□	OB	8	NAL LIGHTING Fixtures, Government, Healthcare, Hotel, Sidewalk, Sign, Warehouse, Direct, Well Location	MDS-D-04L-40-4K-F3	MDS	C-70-CR/DATA SHOWN B ABSOLUTE	1	MDS-D-04L-40-4K-F3	4074	89	42

This drawing is the property of ROBERT JOHNSON ARCHITECTS, INC. and is not to be reproduced or copied in whole or in part. It is only to be used for the project and site specifically mentioned herein and is not to be used on any other project. It is to be returned upon request.