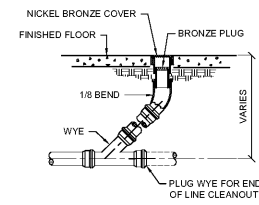
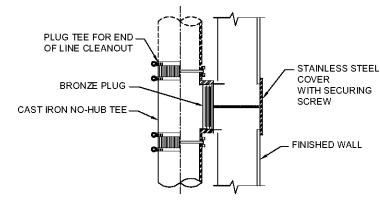


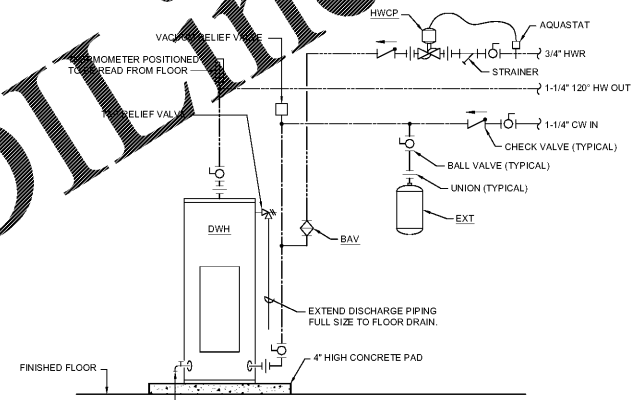
1 FLOOR DRAIN DETAIL
P-3.1 NOT TO SCALE



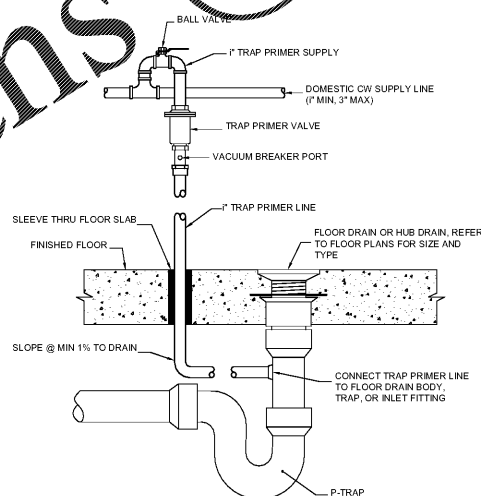
2 FLOOR CLEANOUT DETAIL
P-3.1 NOT TO SCALE



3 WALL CLEANOUT DETAIL
P-3.1 NOT TO SCALE

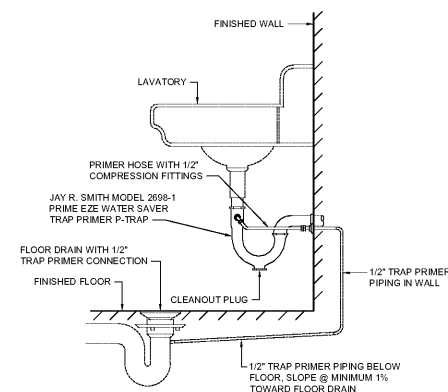


4 DOMESTIC WATER HEATER "DWH-1" DETAIL
P-3.1 NOT TO SCALE

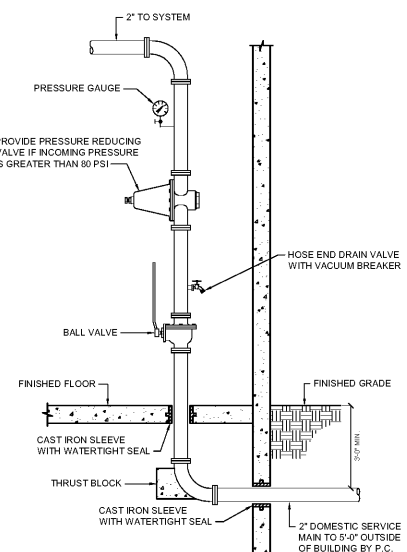


- TRAP PRIMER NOTES:
1. PROVIDE TRAP PRIMER VALVES FOR ALL FLOOR DRAINS AND HUB DRAINS, EXCEPT SHOWER DRAINS.
 2. TRAP PRIMER VALVES SHALL BE SIOUX CHIEF PRIME PERFECT SERIES 695, OR EQUAL.
 3. CONNECT TRAP PRIMER VALVE TO DW LINE: 7" MIN. - 3" MAX.
 4. PROVIDE SIOUX CHIEF WYE SPLITTER AND/OR DISTRIBUTOR FOR TRAP PRIMER VALVES SERVING MORE THAN ONE FLOOR DRAIN.
 5. MAXIMUM OF EIGHT FLOOR DRAINS MAY BE SERVED BY ONE TRAP PRIMER VALVE.

5 TRAP PRIMER DETAIL
P-3.1 NOT TO SCALE



6 TRAP PRIMER DETAIL
P-3.1 NOT TO SCALE



7 DOMESTIC SERVICE RISER DETAIL
P-3.1 NOT TO SCALE

Order Plans @ www.LDILine.com



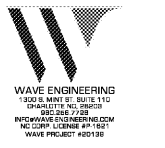
ROBERT JOHNSON
architects
1808 West Morehead St.
Charlotte, NC 28208
T 704 / 342.1058
F 704 / 342.3043

STAMPS



9/30/2020

CONSULTANT



MIDSOUTH
CARPENTER'S
TRAINING
TRUST

La Vergne, TN

PROJECT NUMBER 1982
ISSUE DATE

FOR PERMIT 09.30.20

DRAWING DATA
DRAWN BY: MJS
CHECKED BY: MJS

SHEET TITLE
PLUMBING
DETAILS

This drawing is the property of ROBERT JOHNSON ARCHITECTS, Inc. and is not to be reproduced or copied in whole or in part. It is only to be used for the project and site specifically identified therein and is not to be used on any other project. It is to be returned upon request.

SHEET NUMBER

P-3.1