

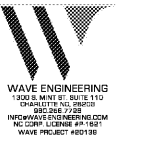


ROBERT JOHNSON  
architects  
1808 West Morehead St.  
Charlotte, NC 28208  
T 704 / 342.1058  
F 704 / 342.3043

STAMPS



CONSULTANT



- KEYED NOTES THIS SHEET**
- ① 18" OUTSIDE AIR DUCT UP TO GREENHECK GRS-16 OR EQUAL ON ROOF. PROVIDE WITH MOTORIZED DAMPERS ON OUTSIDE AIR DUCT TO ROOF.
  - ② ROUTE CONDENSATE AT FULL SIZE OF EQUIPMENT CONNECTION OUTSIDE BUILDING TO SITE STORM OR DRY WELL. COORDINATE EXACT LOCATION WITH SITE CIVIL. (TYP.)
  - ③ INTERLOCK MOTORIZED DAMPER ON LOUVER WITH EF-4 SUCH THAT WHEN FAN IS ENERGIZED DAMPER SHALL BE OPEN.
  - ④ OUTSIDE AIR LOUVER EQUAL TO GREENHECK EPH-401 48x48 WITH BIRD SCREEN AND 12" INSULATED PLENUM. MINIMUM FREE AREA OF 6.25 SQ. FT.

MIDSOUTH  
CARPENTER'S  
TRAINING  
TRUST

La Vergne, TN

PROJECT NUMBER 1987  
ISSUE DATE  
FOR PERMIT 09.30.20

DRAWING DATA  
DRAWN BY: MRM  
CHECKED BY:

SHEET TITLE  
MECHANICAL  
MEZZANINE  
FLOOR PLAN

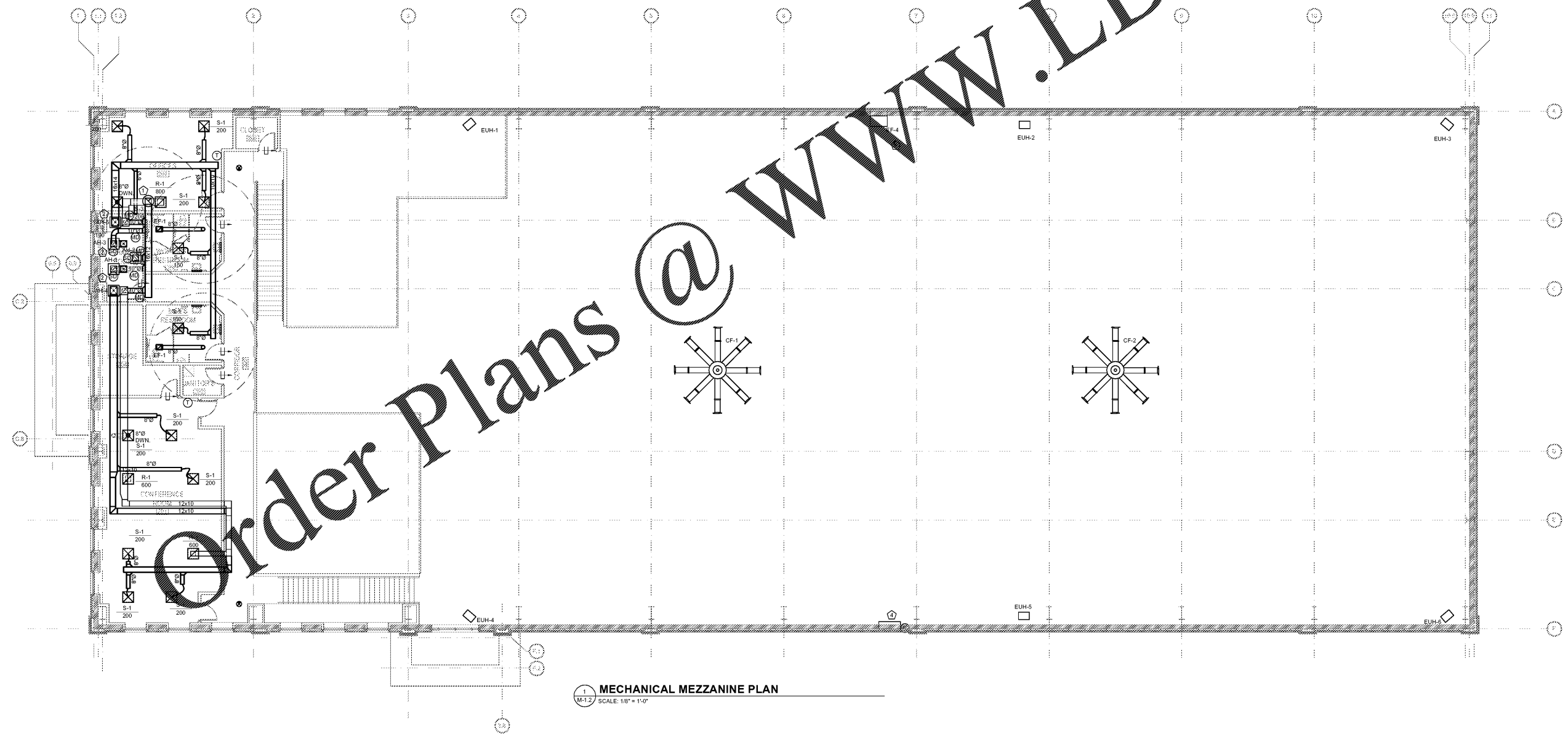
This drawing is the property of ROBERT JOHNSON ARCHITECTS, Inc. and is not to be reproduced or copied in whole or in part. It is only to be used for the project and site specifically identified herein and is not to be used on any other project. It is to be returned upon request.

SHEET NUMBER

M-1.2

WWW.LDILine.com

Order Plans @



1 MECHANICAL MEZZANINE PLAN  
SCALE: 1/8" = 1'-0"