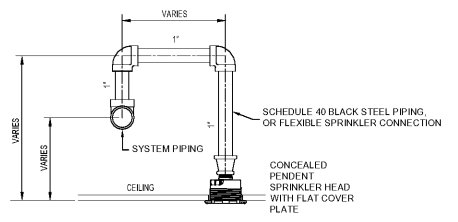
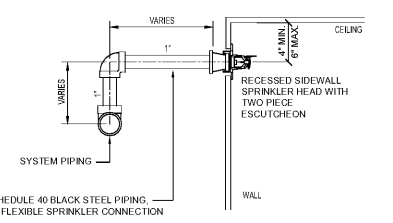


FIRE PROTECTION LEGEND	
PIPING	
	FIRE MAIN
	PIPE CONTINUES
	PIPE DOWN
	PIPE UP
SYMBOLS	
	ALARM BELL
	FIRE DEPARTMENT INLET CONNECTION (FDC)
	FIRE SERVICE ENTRANCE RISER
SPRINKLER HEADS	
	PENDANT SPRINKLER HEAD
	SIDEWALL SPRINKLER HEAD
	UPRIGHT SPRINKLER HEAD

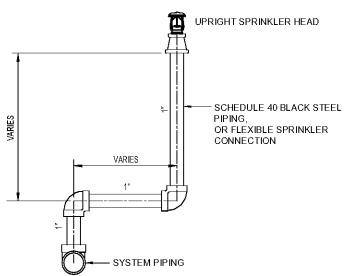
- ### FIRE PROTECTION GENERAL NOTES
- GENERAL REQUIREMENTS:**
- THE DESIGN, MATERIALS, AND INSTALLATION SHALL MEET OR EXCEED ALL REQUIREMENTS OF THE APPLICABLE NFPA STANDARDS, STATE FIRE MARSHALL, LOCAL FIRE MARSHALL HAVING JURISDICTION, OWNER'S INSURANCE CARRIER, AND GOVERNING CITY AND COUNTY CODES.
 - PROVIDE A COMPLETE AUTOMATIC WET PIPE SPRINKLER SYSTEM IN ALL AREAS OF THE BUILDING.
 - THE FIRE PROTECTION SYSTEM SHALL BE DESIGNED, HYDRAULICALLY SIZED, AND INSTALLED IN FULL COMPLIANCE WITH THE REQUIREMENTS OF NFPA 13, OWNER'S INSURANCE UNDERWRITER, LOCAL AUTHORITIES, AND OTHER APPLICABLE CODES AND STANDARDS.
 - WARRANT THE SYSTEM LABOR, MATERIALS, AND EQUIPMENT FOR ONE YEAR AFTER COMPLETION AND ACCEPTANCE. REPLACE OR REPAIR ALL DEFECTIVE WORKMANSHIP, EQUIPMENT, AND MATERIALS AT NO ADDITIONAL COST TO THE OWNER.
 - THE INFORMATION GIVEN HEREIN AND ON THE DRAWINGS SHALL BE SUBJECT AS COULD BE SECURED FOR BIDDING PURPOSES AND SHALL NOT BE GUARANTEED.
 - INCLUDE ALL NECESSARY PERMITS, FEES, AND CHARGES IN THE BID.
- DESIGN:**
- THE SPRINKLER SYSTEM SHALL BE DESIGNED AND HYDRAULICALLY CALCULATED UTILIZING THE INFORMATION PROVIDED HEREIN AND MEET ALL NFPA STANDARDS. THE DESIGNER SHALL NOT INDICATE ANYTHING WITHIN THESE DOCUMENTS.
 - THE DESIGN, INCLUDING HYDRAULIC CALCULATIONS, MATERIALS, AND LAYOUT, SHALL BE BY A SPECIALTY DESIGNER WHO IS A NICET LEVEL 3 OR HIGHER, AS REQUIRED BY STATE LAW, AND LICENSED FOR FIRE PROTECTION DESIGN.
 - BEFORE TO PERFORMING HYDRAULIC CALCULATIONS, OBTAIN APPROVED FIRE FLOW DATA (FLOW AND PRESSURE) FROM THE NEAREST WATER SUPPLY.
 - THE CONTRACTOR IS RESPONSIBLE FOR PROVIDING SHOP DRAWINGS INCLUDING, BUT NOT LIMITED TO, ALL ITEMS WHICH APPLY AS OUTLINED IN NFPA 13, CHAPTER 23, "PLANS AND CALCULATIONS".
 - THE SPRINKLER SYSTEM SHALL BE ZONED, AS A MINIMUM, BY FLOOR.
 - PROVIDE ALL NECESSARY OFFSETS, RISES, OR DROPS IN THE PIPING AND AUXILIARY DRAINS AS REQUIRED BY BUILDING CODES.
 - SPRINKLER SYSTEM DESIGN CRITERIA:
TRAINING FLOOR, MECHANICAL, ELECTRICAL AND STORAGE AREAS:
ORDINARY HAZARD, GROUP 1
DENSITY: .15 GPM OVER AN AREA OF OPERATION OF 1500 SF.
ALL OTHER AREAS: LIGHT HAZARD
DENSITY: .10 GPM OVER AN AREA OF OPERATION OF 1500 SF.
- PIPING AND COMPONENTS:**
- VALVES, SPRINKLER HEADS, FLOW SWITCHES, AND ALL OTHER COMPONENTS USED IN THE SPRINKLER SYSTEM SHALL BE UL LISTED AND SHALL CONFORM TO ALL REQUIREMENTS AS LISTED IN THE LATEST EDITION OF THE NFPA CODES.
 - PIPE AND FITTINGS, WET PIPE SYSTEMS:
MINIMUM SIZE IS 1" FOR 1" TO 2" PIPING, SCHEDULE 40 BLACK STEEL, ASTM A 53 / A 53M, WITH THREADED, WELDED, OR GROOVED-END FITTINGS AND JOINTS. FOR 2" AND LARGER PIPING, SCHEDULE 40 BLACK STEEL, ASTM A 53 / A 53M, WITH GROOVED-END FITTINGS AND JOINTS, OR THINWALL BLACK STEEL, ASTM A 135 OR ASTM A 796 / A 796M, WITH WALL THICKNESS EQUAL TO OR GREATER THAN SCHEDULE 40, WITH GROOVED-END FITTINGS AND JOINTS. SCHEDULE 5 PIPING WILL NOT BE PERMITTED.
 - PIPE HANGERS:
SHALL CONFORM TO NFPA AND UL STANDARDS FOR SPACING, NUMBER, SIZE, AND TYPE. PIPE TO BE GENERALLY SUPPORTED BY CLAMPS AND RODS SECURED TO OVERHEAD CONSTRUCTION.
 - VALVES:
O.S.&Y. GATE VALVES, CAST IRON BODY, WITH BRONZE TRIM, SOLID WEDGE, OR BUTTERFLY VALVES, DUCTILE IRON BODY, WITH STAINLESS STEEL STEM, DUCTILE IRON DISC. VALVES SHALL BE UL LISTED AND APPROVED FOR FIRE PROTECTION SERVICE.
 - ESCUTCHEONS:
PROVIDE CHROME PLATED BRASS ESCUTCHEONS WHERE EXPOSED PIPES PASS THROUGH WALLS, FLOORS, OR CEILINGS.
 - PROVIDE FIRE DEPARTMENT CONNECTION IN COMPLIANCE WITH LOCAL FIRE DEPARTMENT REQUIREMENTS.
- SPRINKLER HEADS:**
- SPRINKLER HEAD LOCATIONS ARE SHOWN AS A BASIS OF DESIGN ONLY. FINAL SPRINKLER HEAD LOCATIONS SHALL BE DETERMINED BY THE CONTRACTOR BASED ON HYDRAULIC CALCULATIONS AND NFPA 13 REQUIREMENTS.
 - SPRINKLERS IN AREAS WITH CEILINGS SHALL BE BRASS CONCEALED PENDENT TYPE, WITH COVER PLATE, COLOR SELECTED BY ARCHITECT.
 - SPRINKLERS IN AREAS WITHOUT CEILINGS, AND IN COMBUSTIBLE CONCEALED SPACES BELOW STAIRS, SHALL BE BRASS UPRIGHT TYPE OR SIDEWALL TYPE.
 - INSTALL WIRE CAGE SPRINKLER GUARDS ON ALL EXPOSED SPRINKLERS IN STORAGE AREAS, AND IN MECHANICAL AND ELECTRICAL ROOMS.
- APPROVALS:**
- THE DESIGN SHALL BE SUBMITTED TO AND APPROVED BY THE AUTHORITY HAVING JURISDICTION, AND THE OWNER'S INSURANCE COMPANY, PRIOR TO FABRICATION OR INSTALLATION.
 - BEFORE STARTING INSTALLATION OF THE WORK, THE CONTRACTOR SHALL SUBMIT EQUIPMENT DATA, PIPING DRAWINGS, AND HYDRAULIC CALCULATIONS OF THE PROPOSED LAYOUT TO THE ARCHITECT FOR REVIEW. NUMBER OF COPIES AS SPECIFIED BY THE ARCHITECT.
- INSTALLATION:**
- SPRINKLER SYSTEMS SHALL BE INSTALLED BY PERSONNEL WHO HAVE FACILITIES AND EXPERIENCE IN SUCH WORK, AND WHO ARE REGULARLY EMPLOYED TO DO SUCH WORK.
 - COORDINATE THE LOCATION OF ALL INSPECTOR'S TEST VALVES AND ROUTE TO EXTERIOR. PROVIDE AND INSTALL ACCESS PANELS AS REQUIRED.
 - IN ROOMS WITH 2"x2" LAY IN TILE CEILINGS, SPRINKLER HEADS SHALL BE LOCATED IN THE CENTER OF CEILING TILES (BOTH DIRECTIONS). IN ROOMS WITH GYPSUM BOARD CEILINGS, SPRINKLER HEADS SHALL BE LOCATED SYMMETRICALLY WITH RESPECT TO OTHER ELEMENTS IN THE CEILING (LIGHTS, GRILLES, ETC.).
 - PROVIDE ALL REQUIRED DRAINS, TEST STATIONS, VALVES, TAMPER SWITCHES, FLOW SWITCHES, ETC. FOR A COMPLETE SPRINKLER SYSTEM. PROVIDE ALL REQUIRED DEVICES AND COMPONENTS FOR INTER-LOCK WIRING WITH THE BUILDING FIRE ALARM.
 - SPRINKLER PIPING SHALL BE CONCEALED ABOVE CEILINGS WHERE POSSIBLE. COORDINATE ROUTING OF PIPING WITH DUCTWORK, PIPING, CONDUIT, ETC. INSTALLED BY OTHER TRADES. DO NOT INSTALL PIPING BENEATH AIR HANDLING BOXES OR WITHIN CLEARANCES REQUIRED FOR MAINTENANCE. INSTALL PIPING AT LEAST 4" ABOVE LIGHT FIXTURES TO ALLOW FOR FUTURE REMOVAL OF FIXTURES.
 - REFER TO THE ARCHITECTURAL DRAWINGS FOR LOCATIONS OF ALL SMOKE AND FIRE WALLS. PIPING WHICH PENETRATES SMOKE OR FIRE WALLS SHALL BE SEALED IN AN APPROVED MANNER. PROVIDE SLEEVES OR OTHER APPROVED MEANS AND SEAL OPENINGS IN WALLS, FLOORS, AND CEILINGS IN SUCH A MANNER AS TO MAINTAIN THE SMOKE AND FIRE RATING.
 - THE CONTRACTOR SHALL EXAMINE THE JOB CONDITIONS AND VERIFY ALL MEASUREMENTS, DISTANCES, ELEVATIONS, CLEARANCES, PIPE SIZES, ETC. BEFORE STARTING THE WORK. THE LOCATION OF THE SPRINKLER HEADS SHALL BE COORDINATED WITH OTHER ELEMENTS IN THE CEILING INCLUDING, BUT NOT LIMITED TO, ARCHITECTURAL FEATURES, ELECTRICAL LIGHTS AND DEVICES, AND HVAC GRILLES.
- TESTING:**
- ALL PIPING AND ALL ATTACHED APPURTENANCES SHALL BE HYDROSTATICALLY TESTED AT 200 PSI AND SHALL MAINTAIN THAT PRESSURE WITHOUT LOSS FOR TWO HOURS.



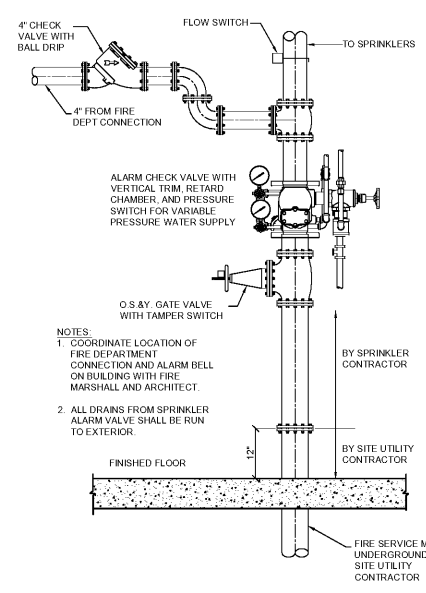
2 TYPICAL CONCEALED PENDANT SPRINKLER HEAD DETAIL
FP-0.1 NOT TO SCALE



3 TYPICAL SIDEWALL SPRINKLER HEAD DETAIL
FP-0.1 NOT TO SCALE



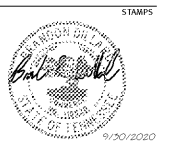
4 TYPICAL UPRIGHT SPRINKLER HEAD DETAIL
FP-0.1 NOT TO SCALE



1 FIRE SERVICE ENTRANCE RISER DETAIL
FP-0.1 NOT TO SCALE

Order Plans @ www.LDILine.com

ROBERT JOHNSON
architects
1808 West Morehead St.
Charlotte, NC 28208
T 704 / 342.1058
F 704 / 342.3043



CONSULTANT
WAVE ENGINEERING
1325 W. HART ST. SUITE 110
CHARLOTTE, NC 28203
PH: 704.375.1100
F: 704.375.1101
WAVE PROJECT #20190

MIDSOUTH CARPENTER'S TRAINING TRUST
LA VERGNE, TN

PROJECT NUMBER 1992
ISSUE DATE
FOR PERMIT 09.30.20

DRAWING DATA
DRAWN BY: MJS
CHECKED BY: MJS

SHEET TITLE
FIRE PROTECTION NOTES AND DETAILS

This drawing is the property of ROBERT JOHNSON ARCHITECTS, INC. and is not to be reproduced or copied in whole or in part. It is only to be used for the project and site specifically identified herein and is not to be used on any other project. It is to be returned upon request.

SHEET NUMBER
FP-0.1