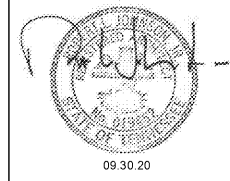




ROBERT JOHNSON
architects
1808 West Morehead St.
Charlotte, NC 28208
T 704 / 342.1058
F 704 / 342.3043

STAMPS



09.30.20

CONSULTANT

MIDSOUTH
CARPENTER'S
TRAINING
TRUST
LA VERGNE, TN

PROJECT NUMBER 1992
ISSUE DATE
FOR PERMIT 09.30.20

DRAWING DATA
DRAWN BY: BM/LM
CHECKED BY: TH

SHEET TITLE

DOOR &
WINDOW
SCHEDULES

This drawing is the property of ROBERT JOHNSON ARCHITECTS, INC. and is not to be reproduced or copied in whole or in part. It is only to be used for the project and site specifically mentioned herein and is not to be used on any other project. It is to be returned upon request.

SHEET NUMBER

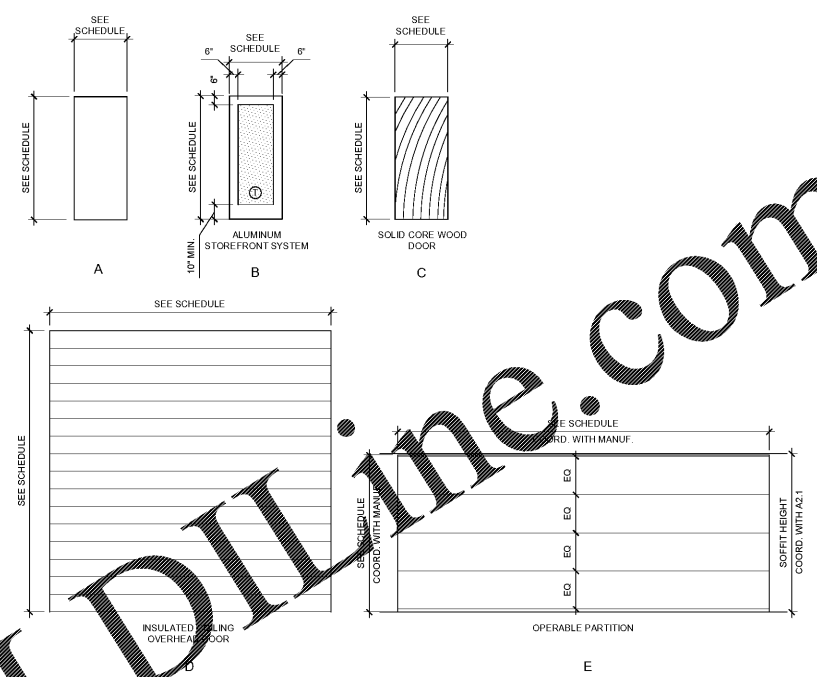
A7.0

DOOR SCHEDULE

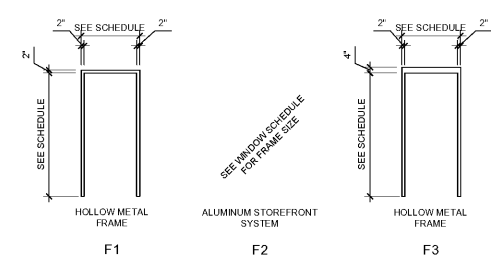
LEVEL	NO.	ROOM NAME	SIZE			DOOR			FRAME			CLOSER	HINGES (PER DOOR)	HINGES (PER DOOR)	THRESHOLD	WEATHER STRIPPING/SWEEP	KICKER	HURDLE	HURDLE/PULL	PRIVACY SET	STORAGE LOCKSET	CLASSROOM LOCKSET	STORAGE LOCKSET	STORAGE LOCKSET	H.H. BY MANUF.	CYLINDER	SMOKE SEAL	CARD READER	WALL STOP	FLOOR STOP	KICK PLATE	RATING	NOTES				
			W	H	T	TYPE	MATERIAL	FINISH	TYPE	MATERIAL	FINISH																										
GROUND FLOOR	100	100 - FRONT LOBBY	(2) 3'-0"	7'-0"	1-3/4"	B	ALUMINUM	DARK BRONZE	F2	ALUMINUM	DARK BRONZE																					PROVIDE MAIL SLOT - SEE WINDOW TYPES					
	101	101 - OFFICE	3'-0"	7'-0"	1-3/4"	C	SOLID CORE WOOD	ST-1	F1	HOLLOW METAL	PT-4																										
	102	102 - OFFICE	3'-0"	7'-0"	1-3/4"	C	SOLID CORE WOOD	ST-1	F1	HOLLOW METAL	PT-4																										
	103	103 - CONFERENCE ROOM	3'-0"	7'-0"	1-3/4"	C	SOLID CORE WOOD	ST-1	F1	HOLLOW METAL	PT-4																										
	104	104 - JANITOR'S	3'-0"	7'-0"	1-3/4"	C	SOLID CORE WOOD	ST-1	F1	HOLLOW METAL	PT-4																										
	105	105 - MEN'S RESTROOM	3'-0"	7'-0"	1-3/4"	C	SOLID CORE WOOD	ST-1	F1	HOLLOW METAL	PT-4																										
	106	100 - FRONT LOBBY	(2) 3'-0"	7'-0"	1-3/4"	B	ALUMINUM	CLEAR ANODIZED	F2	ALUMINUM	TBD																							PROVIDE SIGNAGE PER DETAIL 2/A-7.0 OVERHEAD STOP			
	107	107 - OFFICE	3'-0"	7'-0"	1-3/4"	C	SOLID CORE WOOD	ST-1	F1	HOLLOW METAL	PT-4																										
	108	108 - OFFICE	3'-0"	7'-0"	1-3/4"	C	SOLID CORE WOOD	ST-1	F1	HOLLOW METAL	PT-4																										
	109	109 - CLASSROOM	3'-0"	7'-0"	1-3/4"	C	SOLID CORE WOOD	ST-1	F1	HOLLOW METAL	PT-4																										
	110	110 - STORAGE	3'-0"	7'-0"	1-3/4"	C	SOLID CORE WOOD	ST-1	F1	HOLLOW METAL	PT-4																										
	111	111 - WOMEN'S RESTROOM	3'-0"	7'-0"	1-3/4"	C	SOLID CORE WOOD	ST-1	F1	HOLLOW METAL	PT-4																										
	112	109 - CLASSROOM	3'-0"	7'-0"	1-3/4"	C	SOLID CORE WOOD	ST-1	F1	HOLLOW METAL	PT-4																										
113	113 - BREAK ROOM	(2) 3'-0"	7'-0"	1-3/4"	B	ALUMINUM	CLEAR ANODIZED	F2	ALUMINUM	TBD																											
114	113 - BREAK ROOM	(2) 3'-0"	7'-0"	1-3/4"	B	ALUMINUM	CLEAR ANODIZED	F2	ALUMINUM	TBD																											
115	114 - MEN'S RESTROOM	3'-0"	7'-0"	1-3/4"	C	SOLID CORE WOOD	ST-1	F1	HOLLOW METAL	PT-4																											
116	115 - WOMEN'S RESTROOM	3'-0"	7'-0"	1-3/4"	C	SOLID CORE WOOD	ST-1	F1	HOLLOW METAL	PT-4																											
117	116 - CLASSROOM	3'-0"	7'-0"	1-3/4"	C	SOLID CORE WOOD	ST-1	F1	HOLLOW METAL	PT-4																											
118	117 - ELECTRICAL ROOM	3'-0"	7'-0"	1-3/4"	C	SOLID CORE WOOD	ST-1	F1	HOLLOW METAL	PT-4																											
119	118 - RISER ROOM	3'-0"	7'-0"	1-3/4"	A	HOLLOW METAL	PT-7	F3	HOLLOW METAL	PT-7																											
120	119 - TRAINING FLOOR	3'-0"	7'-0"	1-3/4"	A	HOLLOW METAL	PT-7	F3	HOLLOW METAL	PT-7																											
121	119 - TRAINING FLOOR	3'-0"	7'-0"	1-3/4"	A	HOLLOW METAL	PT-7	F3	HOLLOW METAL	PT-7																											
122	119 - TRAINING FLOOR	16'-0"	16'-0"		D	METAL	BROWN		PER MANUFACTURER																										CHI ROLLING DOOR MODEL 6202		
123	119 - TRAINING FLOOR	(2) 3'-0"	7'-0"	1-3/4"	B	ALUMINUM	DARK BRONZE	F2	ALUMINUM	DARK BRONZE																											
MEZANINE FLOOR	200	201 - CONFERENCE ROOM	3'-0"	7'-0"	1-3/4"	C	SOLID CORE WOOD	ST-1	F1	HOLLOW METAL	PT-4																										
	201	201 - CONFERENCE ROOM	3'-0"	7'-0"	1-3/4"	C	SOLID CORE WOOD	ST-1	F1	HOLLOW METAL	PT-4																										
	202	202 - JANITOR'S	3'-0"	7'-0"	1-3/4"	C	SOLID CORE WOOD	ST-1	F1	HOLLOW METAL	PT-4																										
	203	203 - MEN'S RESTROOM	3'-0"	7'-0"	1-3/4"	C	SOLID CORE WOOD	ST-1	F1	HOLLOW METAL	PT-4																										
	204	204 - STORAGE	3'-0"	7'-0"	1-3/4"	C	SOLID CORE WOOD	ST-1	F1	HOLLOW METAL	PT-4																										
	205	205 - MECHANICAL ROOM	3'-0"	7'-0"	1-3/4"	C	SOLID CORE WOOD	ST-1	F1	HOLLOW METAL	PT-4																										
	206	206 - WOMEN'S RESTROOM	3'-0"	7'-0"	1-3/4"	C	SOLID CORE WOOD	ST-1	F1	HOLLOW METAL	PT-4																										
	207	207 - OFFICES	3'-0"	7'-0"	1-3/4"	C	SOLID CORE WOOD	ST-1	F1	HOLLOW METAL	PT-4																										
	208	208 - CLOSET	3'-0"	7'-0"	1-3/4"	C	SOLID CORE WOOD	ST-1	F1	HOLLOW METAL	PT-4																										
	209	201 - CONFERENCE ROOM	DOOR TYPE "E" - HUFCOR OPERABLE PARTITION - SERIES 643E - UNIT HEIGHT: 8'-11"; UNIT WIDTH: 21'-1 1/4" (FINISH TO BE SELECTED BY OWNER)																																		

NOTES

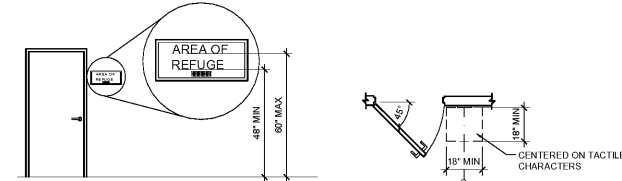
- HARDWARE SET TYPES ARE SHOWN NUMBERED ACCORDING TO RELATIVE FUNCTION. THE CONTRACTOR IS TO SUBMIT SHOP DRAWINGS OF EACH SET FOR ARCHITECT APPROVAL.
- ALL DOOR HARDWARE SHALL BE A.D.A. COMPLIANT & TO COMPLY WITH 2009 ICC/ANSI A117.1.
- GENERAL CONTRACTOR TO COORDINATE WITH ARCHITECT FOR ALL STOREFRONT GLASS COLORS.
- ALL LOCKSETS TO HAVE HARDWARE REMOVAL CORES FOR MASTER KEYING SYSTEM.
- GC TO COORDINATE QUANTITIES AND LOCATIONS OF ALL ROOM IDENTIFICATION SIGNAGE WITH INSPECTOR IN THE FIELD. GC TO COORDINATE WITH ARCHITECT AND OWNER ON DESIGN AND SHALL INSTALL ALL SIGNAGE AS REQUIRED.



DOOR TYPES
SCALE: 1/4" = 1'-0"

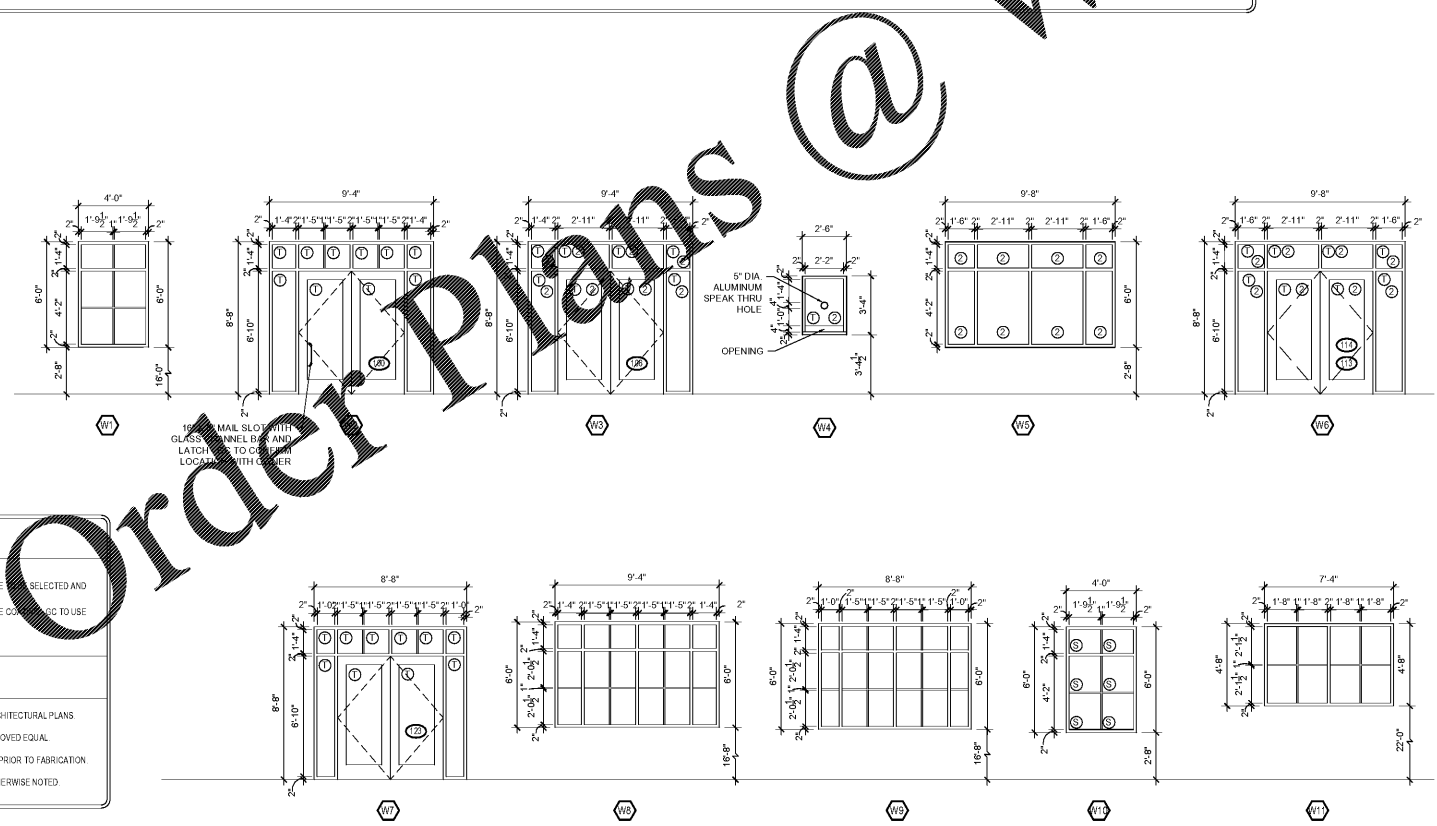


FRAME TYPES
SCALE: 1/4" = 1'-0"



- NOTES:
- THE SIGN SHALL BE LOCATED ALONGSIDE THE DOOR AT THE LATCH SIDE. WHERE A TACTILE SIGN IS PROVIDED AT DOUBLE DOORS WITH ONE ACTIVE LEAF, THE SIGN SHALL BE LOCATED ON THE INACTIVE LEAF. WHERE A TACTILE SIGN IS PROVIDED AT DOUBLE DOORS WITH TWO ACTIVE LEAFS, THE SIGN SHALL BE LOCATED TO THE RIGHT OF THE RIGHT HAND DOOR. WHERE THERE IS NO WALL SPACE AT THE LATCH SIDE OF A SINGLE DOOR OR AT THE RIGHT SIDE OF DOUBLE DOORS, SIGNS SHALL BE LOCATED ON THE NEAREST ADJACENT WALL. SIGNS CONTAINING TACTILE CHARACTERS SHALL BE LOCATED SO THAT A CLEAR FLOOR SPACE OF 18 INCHES MINIMUM BY 18 INCHES MINIMUM, CENTERED ON THE TACTILE CHARACTERS, IS PROVIDED BEYOND THE ARC OF ANY DOOR SWING BETWEEN THE CLOSED POSITION AND 45 DEGREE OPEN POSITION.
 - TACTILE CHARACTERS ON SIGNS SHALL BE LOCATED 48" MINIMUM ABOVE FINISH FLOOR, MEASURED FROM THE BASELINE OF THE LOWEST TACTILE CHARACTER AND 60" MAXIMUM ABOVE THE FINISH FLOOR, MEASURED FROM THE BASELINE OF THE HIGHEST TACTILE CHARACTER.
 - MOUNTING LOCATION SHALL BE SUCH THAT A PERSON MAY APPROACH WITHIN 3" OF THE SIGN WITHOUT ENCOUNTERING PROTRUDING OBJECTS OR STANDING WITHIN THE SWING OF THE DOOR.
 - ALL SIGNAGE SHALL CONFORM WITH ICC A117.1-2009 SECTION 703.
 - BRAILLE SHALL BE POSITIONED BELOW THE CORRESPONDING TEXT IF THE TEXT IS MULTI-LINED BRAILLE SHALL BE PLACED BELOW THE ENTIRE TEXT. BRAILLE SHALL BE SEPARATED 3/8" MINIMUM FROM ANY OTHER TACTILE CHARACTERS AND 3/8" MINIMUM FROM RAISED BORDERS AND DECORATIVE ELEMENTS.
 - CHARACTER HEIGHT MEASURED VERTICALLY FROM THE BASELINE OF THE CHARACTER SHALL BE 2" MINIMUM AND 2" MAXIMUM BASED ON THE HEIGHT OF THE UPPERCASE LETTER "I".

SIGNAGE DETAIL
SCALE: 1/4" = 1'-0"



WINDOW TYPES

- ① TEMPERED GLAZING
- ② SPANDREL GLAZING - COLOR AND STYLE SELECTED AND APPROVED BY ARCHITECT
- ③ 1" INSULATED CLEAR GLASS WITH LOW E COATING TO USE SOLARBAND XL70 AS BASIS OF DESIGN
- ④ 3/4" CLEAR GLASS

NOTES

- LOCATIONS TO BE COORDINATED WITH ARCHITECTURAL PLANS.
- MANUFACTURER TO BE KAWNEER OR APPROVED EQUAL.
- FELD VERIFY DIMENSIONS AND OPENINGS PRIOR TO FABRICATION.
- ALL GLAZING SHALL BE TYPE UNLESS OTHERWISE NOTED.

WINDOW TYPES
SCALE: 1/4" = 1'-0"