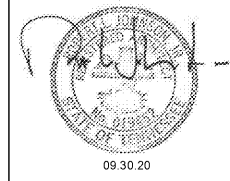




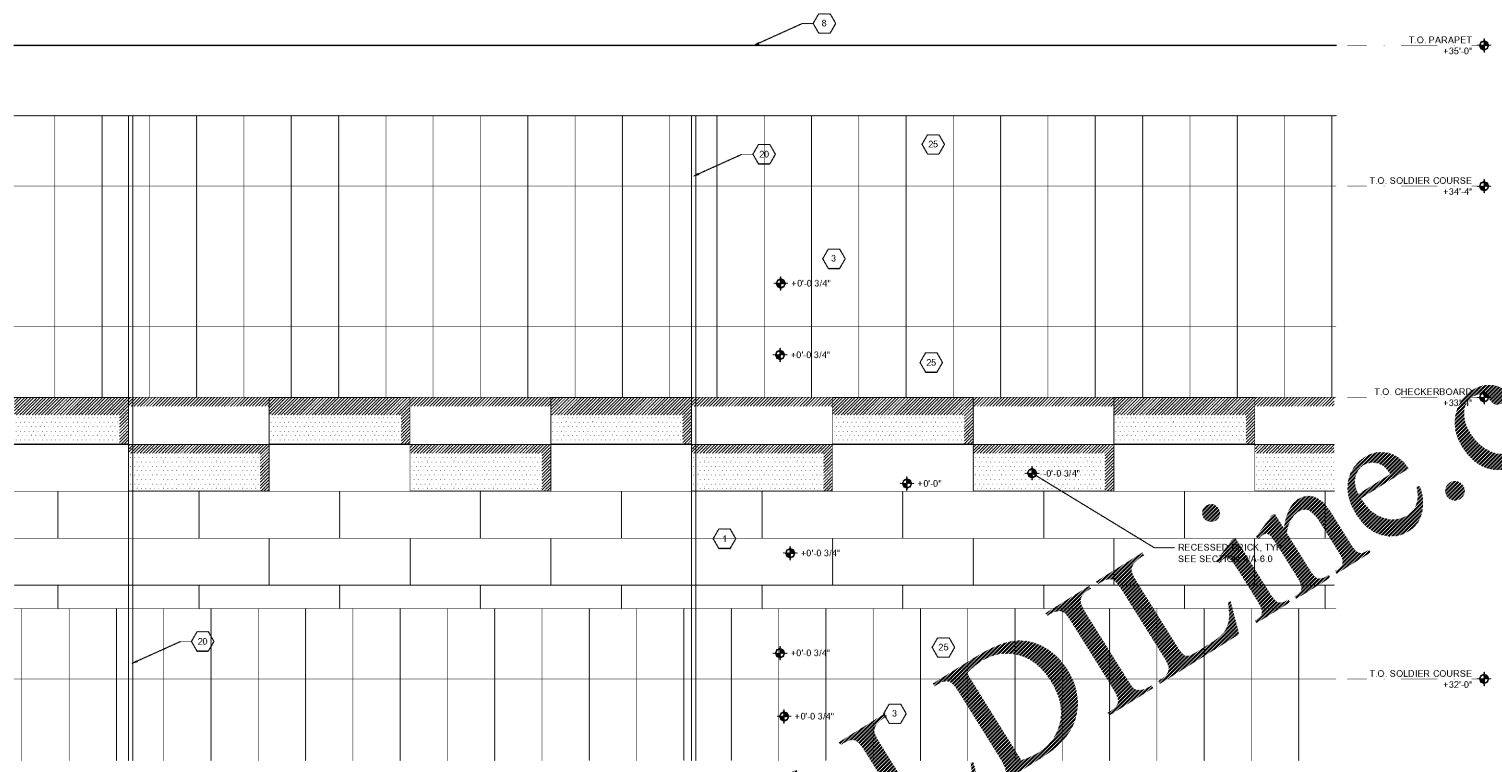
ROBERT JOHNSON
architects
1808 West Morehead St.
Charlotte, NC 28208
T 704 / 342.1058
F 704 / 342.3043

STAMPS



09.30.20

CONSULTANT



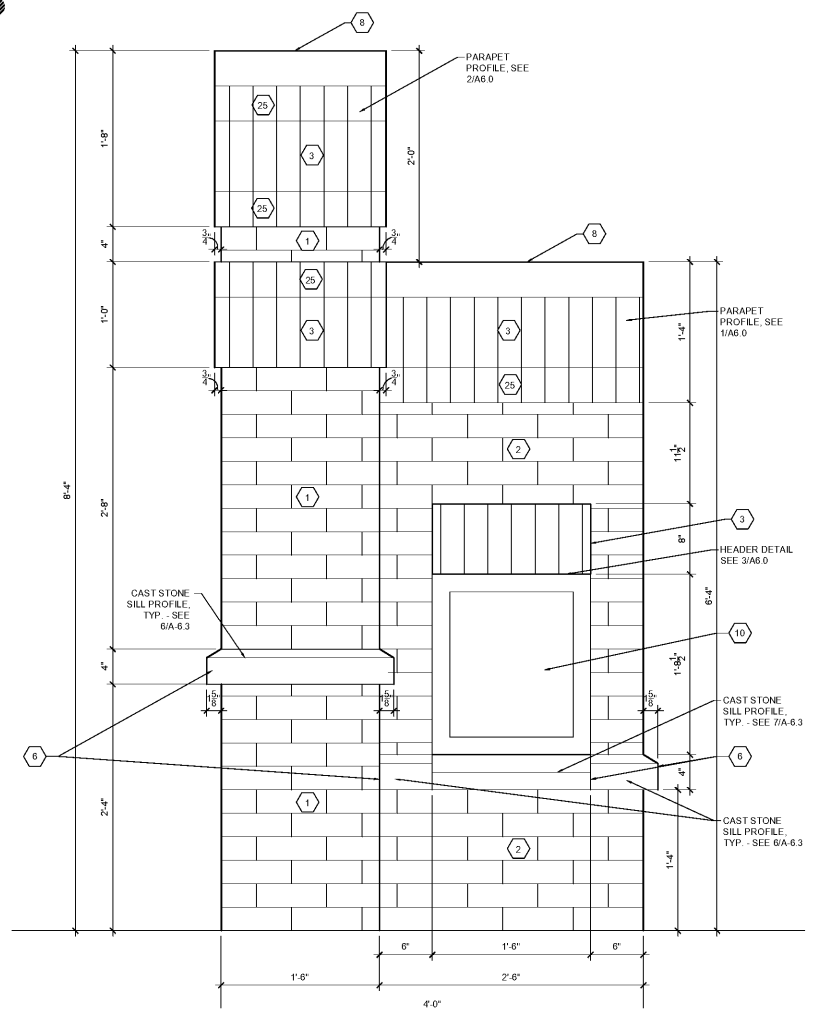
1 EXTERIOR DETAIL
SCALE: 3" = 1'-0"

KEYED NOTES

- 1 MODULAR BRICK VENEER - GENERAL SHALE "SILVERSTONE VELOUR" WITH STANDARD GROUT
- 2 MODULAR BRICK VENEER - GENERAL SHALE "DUTCH CHOCOLATE" WITH STANDARD GROUT
- 3 MODULAR BRICK VENEER SOLDIER COURSE - GENERAL SHALE "SILVERSTONE VELOUR" WITH STANDARD GROUT
- 4 MODULAR BRICK VENEER ROWLOCK SLOPED AT SILL - GENERAL SHALE "SILVERSTONE VELOUR" WITH STANDARD GROUT
- 5 MODULAR BRICK VENEER CHECKERBOARD PATTERN - GENERAL SHALE "SILVERSTONE VELOUR" WITH STANDARD GROUT
- 6 CAST STONE SILL - ROCKCAST - "CHARLOTTE TAN"
- 7 STANDING SEAM METAL ROOFING - BERRIDGE OR APPROVED EQUAL - "DARK BRONZE"
- 8 PREFINISHED ALUMINUM METAL COPING - PAC-CLAD OR APPROVED EQUAL - "DARK BRONZE"
- 9 PREFINISHED ALUMINUM METAL GUTTER / DOWNSPOUT - PAC-CLAD OR APPROVED EQUAL - "DARK BRONZE" - DISCHARGE DOWNSPOUT AT FACE OF CURB - SEE CIVIL
- 10 ALUMINUM STOREFRONT - KAWNEER OR APPROVED EQUAL - "DARK BRONZE"
- 11 PRE-FAB CORNICE - EDON CORNICE - MODEL CR-455; COLOR TO MATCH SHERWIN WILLIAMS "POPULAR GRAY" SW 6071
- 12 FIBERGLASS REINFORCED POLYESTER (FRP) COLUMN COVERS ROUND TAPERED COLUMNS - PROFILE TO BE APPROVED BY ARCHITECT - COLOR TO MATCH SHERWIN WILLIAMS "POPULAR GRAY" SW 6071
- 13 HOLLOW METAL DOOR AND FRAME - PAINTED SHERWIN WILLIAMS "URBANE BRONZE" SW 7048
- 14 CHI ROLLING DOOR - MODEL 6202 - "BROWN"
- 15 SIGNAGE SHOWN FOR REFERENCE ONLY - ALL SIGNAGE TO BE PERMITTED UNDER SEPARATE COVER BY TENANT
- 16 EXTERIOR WALL SCONCE - FIXTURE TYPE A - SEE ELECTRICAL
- 17 EXTERIOR EGRESS EMERGENCY LIGHT FIXTURE TYPE B - SEE ELECTRICAL
- 18 EXTERIOR WALL PACK - FIXTURE TYPE C - SEE ELECTRICAL
- 19 4" HIGH x 5" WIDE SCUPPER - SEE 2/A.3.0 AND 3/A.3.0
- 20 CONTROL JOINT
- 21 HOSE BIB - SEE PLUMBING
- 22 MECHANICAL LOUVERS - TO MATCH STOREFRONT - SEE MECHANICAL
- 23 ELECTRICAL PANEL - SEE ELECTRICAL
- 24 FDC CONNECTION
- 25 MODULAR BRICK VENEER ROWLOCK - GENERAL SHALE "SILVERSTONE VELOUR" WITH STANDARD GROUT

MOCK-UP PANEL GENERAL NOTES

MOCK-UP PANEL TO BE CONSTRUCTED ON SITE AS EARLY IN THE CONSTRUCTION PROGRAM AS POSSIBLE. THE PANEL SHALL INCLUDE ALL COMPONENTS OF THE EXTERIOR WALL SYSTEM THROUGH THE BUILDING CONSTRUCTION INCLUDING BUT NOT LIMITED TO: FRAMING, FLASHING, AIR/WEATHER BARRIERS, WATERPROOFING, ANCHORS, FLASHING, JOINT SEAMANTS, ACCESSORIES, ETC. PANEL WILL BE REVIEWED BY THE OWNER AND ARCHITECT TO PROVIDE FINAL APPROVAL OF ALL MATERIALS AND COLORS, AS WELL AS TO BE THE STANDARD FOR THE WORKMANSHIP AND EXECUTION TO BE EXPECTED THROUGHOUT THE COURSE OF THE PROJECT. O.C. SHALL NOTIFY ARCHITECT AND OWNER WITHIN A MINIMUM OF SEVEN DAYS NOTICE WHEN THE PANEL HAS BEEN COMPLETED AND IS READY FOR REVIEW. ALL MATERIALS SHOWN ON THE PANEL MUST BE COMPLETELY INSTALLED BEFORE ANY APPROVALS OR RELEASES ON MATERIALS ARE PROVIDED. ANY MATERIALS ORDERED FOR THE PROJECT PRIOR TO THE APPROVAL OF THE PANEL BY BOTH THE OWNER AND THE ARCHITECT ARE AT THE SOLE RISK OF THE O.C. THE O.C. IS TO COORDINATE WITH CIVIL ENGINEER, ARCHITECT, AND OWNER FOR BEST LOCATION OF THE MOCK PANEL SO THAT IT CAN REMAIN IN PLACE AND PROTECTED WITHOUT INTERFERING WITH THE REQUIRED SITEWORK OF THE PROJECT. TO THE EXTENT POSSIBLE, PANEL SHALL BE ORIENTED FACING SOUTH. PANEL SHALL REMAIN ON-SITE AND PROTECTED THROUGHOUT THE ENTIRE DURATION OF CONSTRUCTION AND SHALL NOT BE REMOVED UNTIL THE PUNCHLIST HAS BEEN COMPLETED. AT THAT TIME O.C. SHALL DEMOLISH AND REMOVE ALL ELEMENTS OF THE MOCK-UP PANEL AND PATCH THE SITEWORK AS REQUIRED.



2 MOCK-UP PANEL
SCALE: 1 1/2" = 1'-0"

MIDSOUTH
CARPENTER'S
TRAINING
TRUST
LA VERGNE, TN

PROJECT NUMBER 1982
ISSUE DATE
FOR PERMIT 09.30.20

DRAWING DATA
DRAWN BY: BM/LM
CHECKED BY: TH

SHEET TITLE
EXTERIOR
ELEVATION
DETAILS &
MOCK UP
PANEL

This drawing is the property of ROBERT JOHNSON ARCHITECTS, INC. and is not to be reproduced or copied in whole or in part. It is only to be used for the project and for specifically mentioned herein and is not to be used on any other project. It is to be returned upon request.

SHEET NUMBER

A-4.2