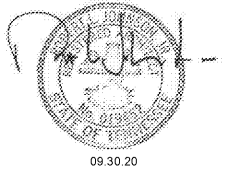




ROBERT JOHNSON  
architects  
1808 West Morehead St.  
Charlotte, NC 28208  
T 704 / 342.1058  
F 704 / 342.3043

STAMPS



CONSULTANT

MIDSOUTH  
CARPENTER'S  
TRAINING  
TRUST

LAVERGNE, TN

PROJECT NUMBER 1982  
ISSUE DATE  
FOR PERMIT 09.30.20

DRAWING DATA  
DRAWN BY: BM/LM  
CHECKED BY: TH

SHEET TITLE

EXTERIOR  
ELEVATIONS

This drawing is the property of ROBERT JOHNSON ARCHITECTS, INC. and is not to be reproduced or copied in whole or in part. It is only to be used for the project and for specifically intended therein and is not to be used on any other project. It is to be returned upon request.

SHEET NUMBER

A-4.1

NOTE:

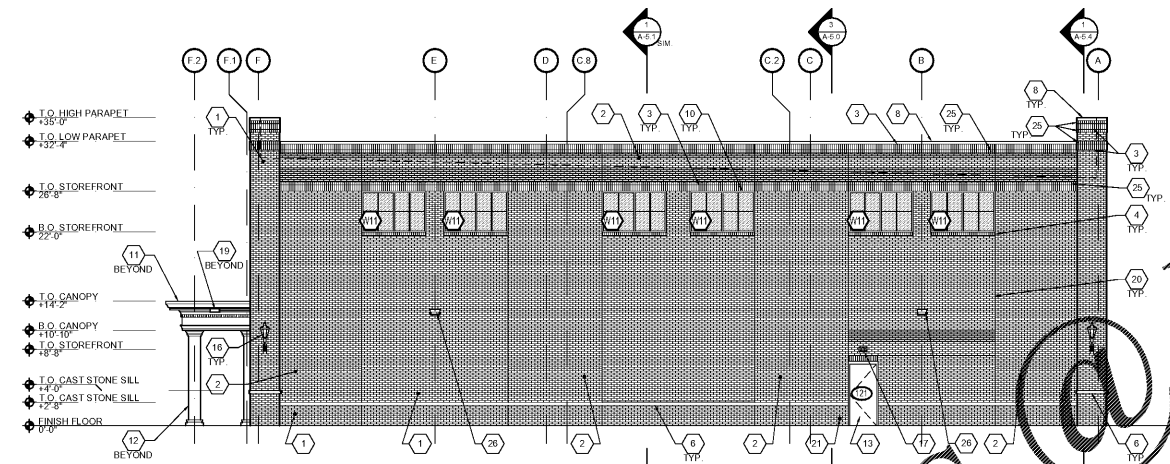
ARCHITECT TO PROVIDE DIGITAL MATERIAL BOARD FOR COLORED ELEVATIONS. THESE WILL DEPICT COLORS AND MATERIALS FOR THE EXTERIOR ELEVATIONS.

NOTE:

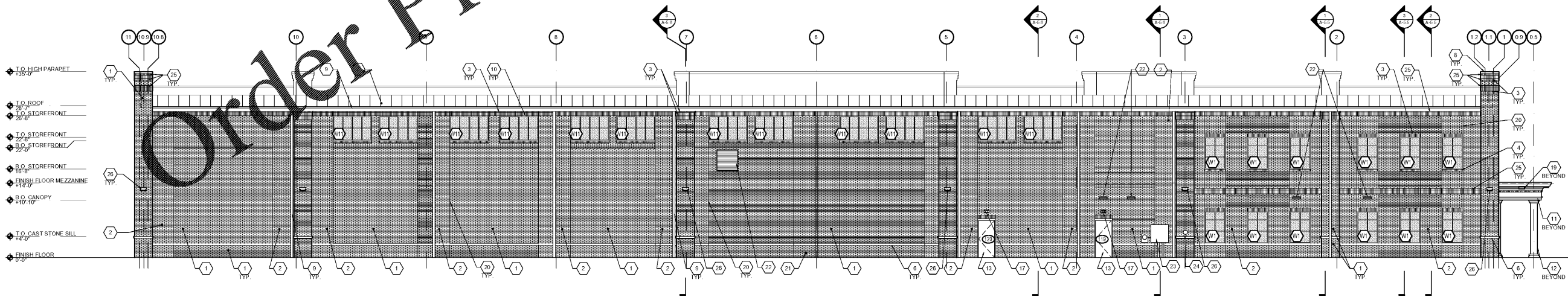
ALL BRICK CONTROL JOINTS TO BE PLACED ON INSIDE CORNER OF PIERS AS REQUIRED.

LEVEL NOTES

- 1 MODULAR BRICK VENEER - GENERAL SHALE "SILVERSTONE VELOUR" WITH STANDARD GROUT
- 2 MODULAR BRICK VENEER, GENERAL SHALE "DUTCH CHOCOLATE" WITH STANDARD GROUT
- 3 MODULAR BRICK VENEER - OLDER COURSE - GENERAL SHALE "SILVERSTONE VELOUR" WITH STANDARD GROUT
- 4 MODULAR BRICK VENEER ROWLOCK SLOPED AT SILL - GENERAL SHALE "SILVERSTONE VELOUR" WITH STANDARD GROUT - SEE DETAIL 2/A-4.2
- 5 MODULAR BRICK VENEER CHECKERBOARD PATTERN - GENERAL SHALE "SILVERSTONE VELOUR" WITH STANDARD GROUT - SEE DETAIL 2/A-4.2
- 6 CAST STONE SILL - ROCKCAST - "CHARLOTTE TAN"
- 7 STANDING SEAM METAL ROOFING - BERRIDGE OR APPROVED EQUAL - "DARK BRONZE"
- 8 PREFINISHED ALUMINUM METAL COPING - PAC-CLAD OR APPROVED EQUAL - "DARK BRONZE"
- 9 PREFINISHED ALUMINUM METAL GUTTER / DOWNSPOUT - PAC-CLAD OR APPROVED EQUAL - "DARK BRONZE" - DISCHARGE DOWNSPOUT AT FACE OF CURB - SEE CIVIL
- 10 ALUMINUM STOREFRONT - KAWNEER OR APPROVED EQUAL - "DARK BRONZE"
- 11 PRE-FAB CORNICE - EDON CORNICE - MODEL CR-455; COLOR TO MATCH SHERWIN WILLIAMS "POPULAR GRAY" SW 6071
- 12 FIBERGLASS REINFORCED POLYESTER (FRP) COLUMN COVERS ROUND TAPERED COLUMNS - PROFILE TO BE APPROVED BY ARCHITECT - COLOR TO MATCH SHERWIN WILLIAMS "POPULAR GRAY" SW 6071
- 13 HOLLOW METAL DOOR AND FRAME - PAINTED SHERWIN WILLIAMS "URBANE BRONZE" SW 7048
- 14 CHI ROLLING DOOR - MODEL 6202 - "BROWN"
- 15 SIGNAGE SHOWN FOR REFERENCE ONLY - ALL SIGNAGE TO BE PERMITTED UNDER SEPARATE COVER BY TENANT
- 16 EXTERIOR WALL SCONCE - FIXTURE TYPE A - SEE ELECTRICAL
- 17 EXTERIOR EGRESS EMERGENCY LIGHT FIXTURE TYPE B - SEE ELECTRICAL
- 18 EXTERIOR WALL PACK - FIXTURE TYPE C - SEE ELECTRICAL
- 19 4" HIGH x 5" WIDE SCUPPER - SEE 2/A-3.0 AND 3/A-3.0
- 20 CONTROL JOINT
- 21 HOSE BIB - SEE PLUMBING
- 22 MECHANICAL LOUVERS - TO MATCH STOREFRONT - SEE MECHANICAL
- 23 ELECTRICAL PANEL - SEE ELECTRICAL
- 24 FDC CONNECTION
- 25 MODULAR BRICK VENEER ROWLOCK - GENERAL SHALE "SILVERSTONE VELOUR" WITH STANDARD GROUT
- 26 WALL PACK LIGHT FIXTURE, MOUNT AT 13'-0" A.F.F. - SEE ELECTRICAL



1 EAST ELEVATION  
A-4.1 SCALE: 1/8" = 1'-0"



2 NORTH ELEVATION  
A-4.1 SCALE: 1/8" = 1'-0"