

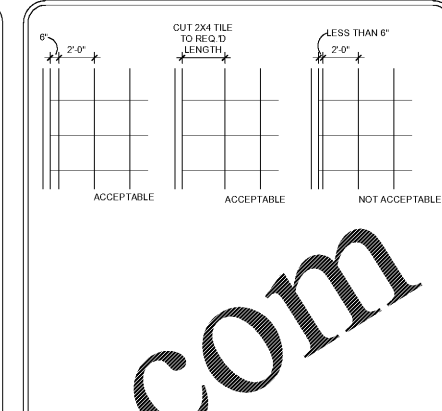
SYMBOL LEGEND

	2" X 2" X 3/4" SUSPENDED ACOUSTICAL TILE ARMS TRONG "ULTIMA" BEVELED TEGULAR TILE WITH 9/16" SUPRAFINE XL EXPOSED TEE GRID - COLOR TO BE WHITE - SEE RCP FOR HEIGHTS A.F.F.		EXTERIOR WALL SCONCE FIXTURE TYPE A - SEE SECTION FOR MOUNTING HEIGHT TO CENTER OF FIXTURE - SEE ELECTRICAL		CONFERENCE ROOM PENDANT FIXTURE TYPE H - SEE PLAN FOR MOUNTING HEIGHT TO BOTTOM OF FIXTURE - SEE ELECTRICAL		EXIT SIGN - SEE ELECTRICAL
	PAINTED GYPSUM CEILING - SEE RCP FOR HEIGHTS A.F.F. - FINISH AS SCHEDULED		EXTERIOR EGRESS EMERGENCY LIGHT FIXTURE TYPE B - SEE PLAN FOR MOUNTING HEIGHT TO CENTER OF FIXTURE - SEE ELECTRICAL		BREAK ROOM PENDANT FIXTURE TYPE I - SEE PLAN FOR MOUNTING HEIGHT TO BOTTOM OF FIXTURE - SEE ELECTRICAL		RETURN AIR GRILLE - SEE MECHANICAL
	ARMSTRONG "ULTIMA" 2" X 2" X 3/4" BEVELED TEGULAR ITEM #1912 TO BE INSTALLED ON 9/16" SUPRAFINE XL TEE-BAR SUSPENSION SYSTEM WITH AXIOM 6" CLASSIC EXTRUDED ALUMINUM PERIMETER TRIM - COLOR TO BE WHITE - PROVIDE THREAD ROD FOR MOUNTING - SEE RCP FOR SIZE AND MOUNTING HEIGHT TO BOTTOM OF FIXTURE		EXTERIOR WALL PACK FIXTURE TYPE C - SEE PLAN FOR MOUNTING HEIGHT TO CENTER OF FIXTURE - SEE ELECTRICAL		RESTROOM WALL SCONCE FIXTURE TYPE J - SEE PLAN FOR MOUNTING HEIGHT TO BOTTOM OF FIXTURE - SEE ELECTRICAL		SUPPLY AIR DIFFUSER - SEE MECHANICAL
	ARMSTRONG "ULTIMA" 2" X 2" X 3/4" BEVELED TEGULAR ITEM #1912 TO BE INSTALLED ON 9/16" SUPRAFINE XL TEE-BAR SUSPENSION SYSTEM WITH AXIOM 6" CLASSIC EXTRUDED ALUMINUM PERIMETER TRIM - COLOR TO BE WHITE - PROVIDE THREAD ROD FOR MOUNTING - SEE RCP FOR SIZE AND MOUNTING HEIGHT TO BOTTOM OF FIXTURE		RECESSED CAN CANOPY LIGHT FIXTURE TYPE D - SEE PLAN FOR MOUNTING HEIGHT TO BOTTOM OF FIXTURE - SEE ELECTRICAL		CUSTOM STRIP LIGHT FIXTURE TYPE K - SEE 1/AS 6 - SEE ELECTRICAL		RECESSED EXHAUST FAN - SEE MECHANICAL
	ARMSTRONG "ULTIMA" 2" X 2" X 3/4" BEVELED TEGULAR ITEM #1912 TO BE INSTALLED ON 9/16" SUPRAFINE XL TEE-BAR SUSPENSION SYSTEM WITH AXIOM 6" CLASSIC EXTRUDED ALUMINUM PERIMETER TRIM - COLOR TO BE WHITE - PROVIDE THREAD ROD FOR MOUNTING - SEE RCP FOR SIZE AND MOUNTING HEIGHT TO BOTTOM OF FIXTURE		EMERGENCY RECESSED CAN CANOPY LIGHT FIXTURE TYPE DE - SEE PLAN FOR MOUNTING HEIGHT TO BOTTOM OF FIXTURE - SEE ELECTRICAL		2" X 4" LAY-IN LED LIGHT FIXTURE TYPE L - SEE ELECTRICAL		ELECTRIC UNIT HEATER - SEE MECHANICAL
	ARMSTRONG "ULTIMA" 2" X 2" X 3/4" BEVELED TEGULAR ITEM #1912 TO BE INSTALLED ON 9/16" SUPRAFINE XL TEE-BAR SUSPENSION SYSTEM WITH AXIOM 6" CLASSIC EXTRUDED ALUMINUM PERIMETER TRIM - COLOR TO BE WHITE - PROVIDE THREAD ROD FOR MOUNTING - SEE RCP FOR SIZE AND MOUNTING HEIGHT TO BOTTOM OF FIXTURE		RECESSED CAN LIGHT FIXTURE TYPE E - SEE PLAN FOR MOUNTING HEIGHT TO BOTTOM OF FIXTURE - SEE ELECTRICAL		SERVICE AREA LINEAR LIGHT FIXTURE TYPE M - SEE PLAN FOR MOUNTING HEIGHT TO BOTTOM OF FIXTURE - SEE ELECTRICAL		CEILING FAN - SEE ELECTRICAL
	ARMSTRONG "ULTIMA" 2" X 2" X 3/4" BEVELED TEGULAR ITEM #1912 TO BE INSTALLED ON 9/16" SUPRAFINE XL TEE-BAR SUSPENSION SYSTEM WITH AXIOM 6" CLASSIC EXTRUDED ALUMINUM PERIMETER TRIM - COLOR TO BE WHITE - PROVIDE THREAD ROD FOR MOUNTING - SEE RCP FOR SIZE AND MOUNTING HEIGHT TO BOTTOM OF FIXTURE		CORRIDOR PENDANT FIXTURE TYPE F - SEE PLAN FOR MOUNTING HEIGHT TO BOTTOM OF FIXTURE - SEE ELECTRICAL		2" X 4" HIGH BAY LINEAR LIGHT FIXTURE TYPE N - SEE PLAN FOR MOUNTING HEIGHT TO BOTTOM OF FIXTURE - GC TO COORDINATE FINAL MOUNTING HEIGHT WITH OWNER - SEE ELECTRICAL		WALL PACK LIGHT FIXTURE, MOUNT AT 13'-0" A.F.F. - SEE ELECTRICAL
	ARMSTRONG "ULTIMA" 2" X 2" X 3/4" BEVELED TEGULAR ITEM #1912 TO BE INSTALLED ON 9/16" SUPRAFINE XL TEE-BAR SUSPENSION SYSTEM WITH AXIOM 6" CLASSIC EXTRUDED ALUMINUM PERIMETER TRIM - COLOR TO BE WHITE - PROVIDE THREAD ROD FOR MOUNTING - SEE RCP FOR SIZE AND MOUNTING HEIGHT TO BOTTOM OF FIXTURE		DOMESTIC FIXTURE TYPE G - SEE PLAN FOR MOUNTING HEIGHT TO BOTTOM OF FIXTURE - SEE ELECTRICAL		2" X 4" HIGH BAY LINEAR LIGHT FIXTURE TYPE N - SEE PLAN FOR MOUNTING HEIGHT TO BOTTOM OF FIXTURE - GC TO COORDINATE FINAL MOUNTING HEIGHT WITH OWNER - SEE ELECTRICAL		

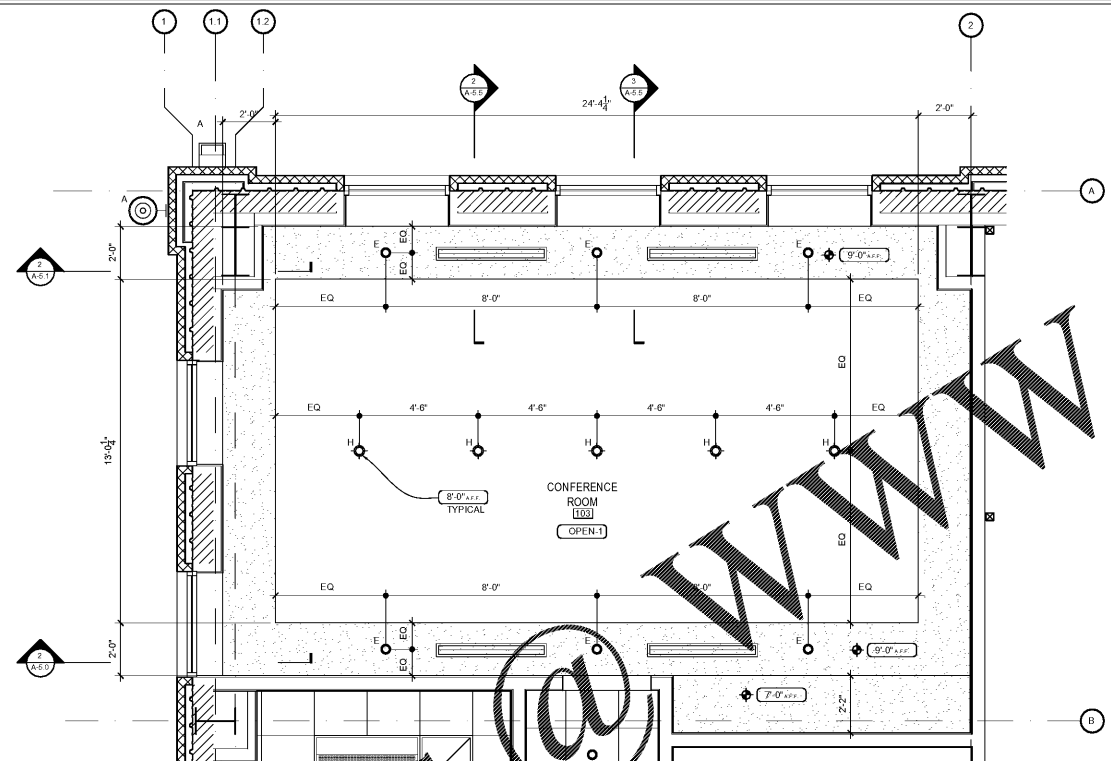
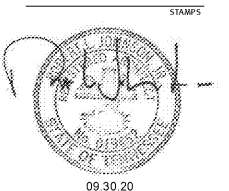
R.C.P. NOTES

- COORDINATE WITH ARCHITECT AND ELECTRICAL ENGINEER FOR COLOR TEMP REQUIREMENTS FOR ALL LIGHTING.
- COORDINATE WITH GENERAL NOTES AND ELECTRICAL/MECHANICAL DRAWINGS
- ALL FINISHES FOR LIGHTS, MECHANICAL SUPPLIES AND DIFFUSERS, AND EXIT SIGNS TO BE SELECTED AND APPROVED BY ARCHITECT PRIOR TO BIDDING AND PURCHASE
- CEILING TILE GRIDS SHALL BE CENTERED IN ROOMS UNLESS OTHERWISE NOTED. #4 MINIMUM TILE SHALL BE USED AT ALL AREAS WHERE CEILING GRID TERMINATES. IF LESS THAN 4", GC SHALL CUT A 2X4 OR 2X2 TILE RESPECTIVELY TO THE REQUIRED LENGTH.
- ALL EXPOSED STRUCTURE, CONDUIT, UNISTRUT, BRACING, SPRINKLER PIPES, AND MECHANICAL TO BE PAINTED IN OPEN-1 CEILING AREAS. REFER TO A.7.1 FOR SCHEDULE.

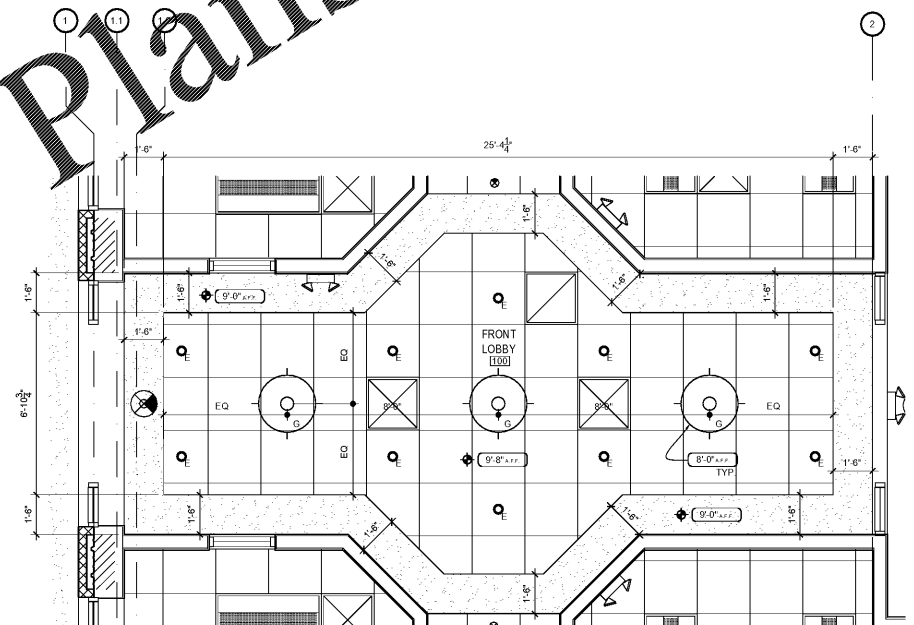
NOTES



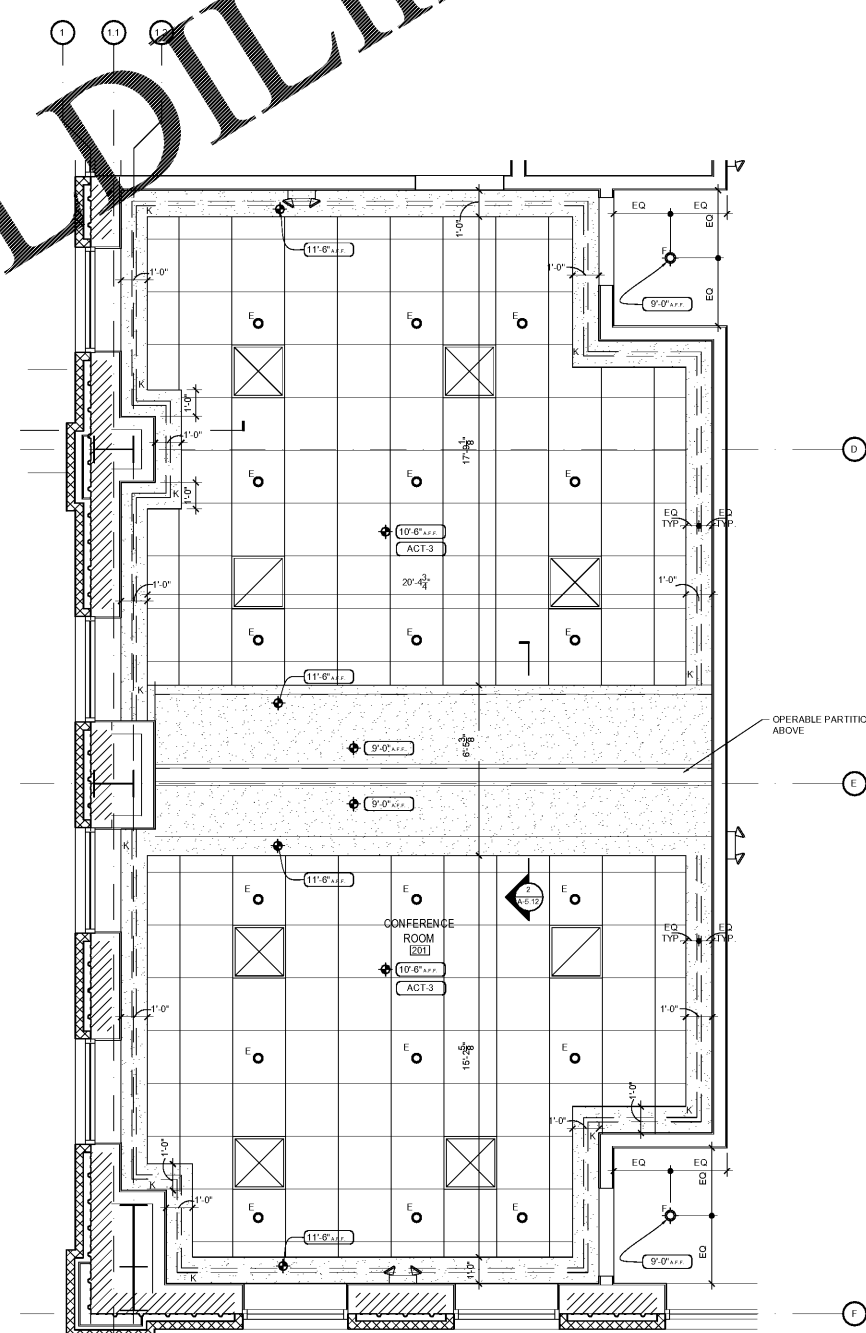
ROBERT JOHNSON architects
 1808 West Morehead St.
 Charlotte, NC 28208
 T 704 / 342.1058
 F 704 / 342.3043



1 ENLARGED GROUND FLOOR REFLECTED CEILING PLAN
 A-2.2 SCALE: 3/8" = 1'-0" CONFERENCE ROOM 103



2 ENLARGED GROUND FLOOR REFLECTED CEILING PLAN
 A-2.2 SCALE: 3/8" = 1'-0" FRONT LOBBY 100



3 ENLARGED MEZZANINE REFLECTED CEILING PLAN
 A-2.2 SCALE: 3/8" = 1'-0" CONFERENCE ROOM 201

Order Plans

WWW.LDILine.com

MIDSOUTH CARPENTER'S TRAINING TRUST
 LA VERGNE, TN

PROJECT NUMBER 1982
 ISSUE DATE
 FOR PERMIT 09.30.20

DRAWING DATA
 DRAWN BY: BM/LM
 CHECKED BY: TH

SHEET TITLE

ENLARGED REFLECTED CEILING PLANS

This drawing is the property of ROBERT JOHNSON ARCHITECTS, INC. and is not to be reproduced or copied in whole or in part. It is only to be used for the project and for specifically mentioned therein and is not to be used on any other project. It is to be returned upon request.

SHEET NUMBER

A-2.2