

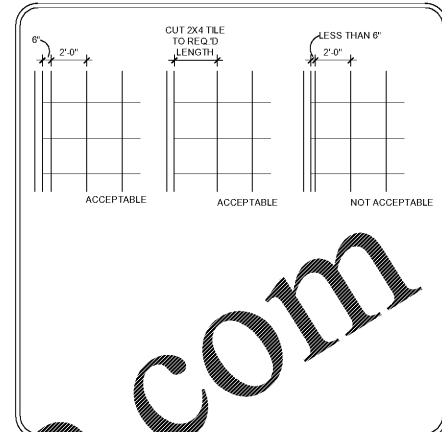
**SYMBOL LEGEND**

	2' X 2' X 3/4" SUSPENDED ACOUSTICAL TILE. ARMS TRONG "ULTIMA" BEVELED REGULAR TILE WITH 9/16" SUPRAFINE XL TEE BAR SUSPENSION SYSTEM. COLOR TO BE WHITE. SEE RCP FOR HEIGHTS A.F.F.	A		EXTERIOR WALL SCONCE FIXTURE TYPE A. SEE SECTION FOR MOUNTING HEIGHT TO CENTER OF FIXTURE. SEE ELECTRICAL.	H		CONFERENCE ROOM PENDANT FIXTURE TYPE H. SEE PLAN FOR MOUNTING HEIGHT TO BOTTOM OF FIXTURE. SEE ELECTRICAL.		EXIT SIGN - SEE ELECTRICAL.
	PAINTED GYPSUM CEILING. SEE RCP FOR HEIGHTS A.F.F. FINISH AS SCHEDULED.	B		EXTERIOR EGRESS EMERGENCY LIGHT FIXTURE TYPE B. SEE PLAN FOR MOUNTING HEIGHT TO CENTER OF FIXTURE. SEE ELECTRICAL.	I		BREAK ROOM PENDANT FIXTURE TYPE I. SEE PLAN FOR MOUNTING HEIGHT TO BOTTOM OF FIXTURE. SEE ELECTRICAL.		RETURN AIR GRILLE - SEE MECHANICAL.
	ARMS TRONG "ULTIMA" 2' X 2' X 3/4" BEVELED REGULAR ITEM #1912 TO BE INSTALLED ON 9/16" SUPRAFINE XL TEE BAR SUSPENSION SYSTEM WITH ANOM 10" CLASSIC EXTRUDED ALUMINUM PERIMETER TRIM. COLOR TO BE WHITE. PROVIDE THREAD ROD FOR MOUNTING. SEE RCP FOR SIZE AND MOUNTING HEIGHT TO BOTTOM OF FIXTURE.	C		EXTERIOR WALL PACK FIXTURE TYPE C. SEE PLAN FOR MOUNTING HEIGHT TO CENTER OF FIXTURE. SEE ELECTRICAL.	J		RESTROOM WALL SCONCE FIXTURE TYPE J. SEE PLAN FOR MOUNTING HEIGHT TO CENTER OF FIXTURE. SEE ELECTRICAL.		SUPPLY AIR DIFFUSER - SEE MECHANICAL.
	ARMS TRONG "ULTIMA" 2' X 2' X 3/4" BEVELED REGULAR ITEM #1912 TO BE INSTALLED ON 9/16" SUPRAFINE XL TEE BAR SUSPENSION SYSTEM WITH ANOM 10" CLASSIC EXTRUDED ALUMINUM PERIMETER TRIM. COLOR TO BE WHITE. PROVIDE THREAD ROD FOR MOUNTING. SEE RCP FOR SIZE AND MOUNTING HEIGHT TO BOTTOM OF FIXTURE.	D		RECESSED CAN CANOPY LIGHT FIXTURE TYPE D. SEE PLAN FOR MOUNTING HEIGHT TO BOTTOM OF FIXTURE. SEE ELECTRICAL.	K		CUSTOM STRIP LIGHT FIXTURE TYPE K. SEE 1/A5.6 - SEE ELECTRICAL.		RECESSED EXHAUST FAN - SEE MECHANICAL.
	ARMS TRONG "ULTIMA" 2' X 2' X 3/4" BEVELED REGULAR ITEM #1912 TO BE INSTALLED ON 9/16" SUPRAFINE XL TEE BAR SUSPENSION SYSTEM WITH ANOM 10" CLASSIC EXTRUDED ALUMINUM PERIMETER TRIM. COLOR TO BE WHITE. PROVIDE THREAD ROD FOR MOUNTING. SEE RCP FOR SIZE AND MOUNTING HEIGHT TO BOTTOM OF FIXTURE.	DE		EMERGENCY RECESSED CAN CANOPY LIGHT FIXTURE TYPE DE. SEE PLAN FOR MOUNTING HEIGHT TO BOTTOM OF FIXTURE. SEE ELECTRICAL.	L		2' X 4' LAY-IN LED LIGHT FIXTURE TYPE L. SEE ELECTRICAL.		ELECTRIC UNIT HEATER - SEE MECHANICAL.
	ARMS TRONG "ULTIMA" 2' X 2' X 3/4" BEVELED REGULAR ITEM #1912 TO BE INSTALLED ON 9/16" SUPRAFINE XL TEE BAR SUSPENSION SYSTEM WITH ANOM 10" CLASSIC EXTRUDED ALUMINUM PERIMETER TRIM. COLOR TO BE WHITE. PROVIDE THREAD ROD FOR MOUNTING. SEE RCP FOR SIZE AND MOUNTING HEIGHT TO BOTTOM OF FIXTURE.	E		RECESSED CAN LIGHT FIXTURE TYPE E. SEE PLAN FOR MOUNTING HEIGHT TO BOTTOM OF FIXTURE. SEE ELECTRICAL.	M		SERVICE AREA LINEAR LIGHT FIXTURE TYPE M. SEE PLAN FOR MOUNTING HEIGHT TO BOTTOM OF FIXTURE. SEE ELECTRICAL.		CEILING FAN - SEE ELECTRICAL.
	ARMS TRONG "ULTIMA" 2' X 2' X 3/4" BEVELED REGULAR ITEM #1912 TO BE INSTALLED ON 9/16" SUPRAFINE XL TEE BAR SUSPENSION SYSTEM WITH ANOM 10" CLASSIC EXTRUDED ALUMINUM PERIMETER TRIM. COLOR TO BE WHITE. PROVIDE THREAD ROD FOR MOUNTING. SEE RCP FOR SIZE AND MOUNTING HEIGHT TO BOTTOM OF FIXTURE.	F		CORRIDOR PENDANT FIXTURE TYPE F. SEE PLAN FOR MOUNTING HEIGHT TO BOTTOM OF FIXTURE. SEE ELECTRICAL.	N		2' X 4' HIGH BAY LINEAR LIGHT FIXTURE TYPE N. SEE PLAN FOR MOUNTING HEIGHT TO BOTTOM OF FIXTURE. GC TO COORDINATE FINAL MOUNTING HEIGHT WITH OWNER. SEE ELECTRICAL.		WALL PACK LIGHT FIXTURE, MOUNT AT 13'-0" A.F.F. - SEE ELECTRICAL.
	ARMS TRONG "ULTIMA" 2' X 2' X 3/4" BEVELED REGULAR ITEM #1912 TO BE INSTALLED ON 9/16" SUPRAFINE XL TEE BAR SUSPENSION SYSTEM WITH ANOM 10" CLASSIC EXTRUDED ALUMINUM PERIMETER TRIM. COLOR TO BE WHITE. PROVIDE THREAD ROD FOR MOUNTING. SEE RCP FOR SIZE AND MOUNTING HEIGHT TO BOTTOM OF FIXTURE.	G		DOME PENDANT FIXTURE TYPE G. SEE PLAN FOR MOUNTING HEIGHT TO BOTTOM OF FIXTURE. SEE ELECTRICAL.	NE		2' X 4' HIGH BAY LINEAR LIGHT FIXTURE TYPE NE. SEE PLAN FOR MOUNTING HEIGHT TO BOTTOM OF FIXTURE. GC TO COORDINATE FINAL MOUNTING HEIGHT WITH OWNER. SEE ELECTRICAL.		

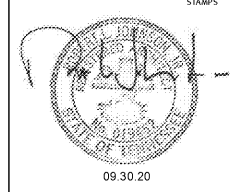
**R.C.P. NOTES**

- COORDINATE WITH ARCHITECT AND ELECTRICAL ENGINEER FOR COLOR TEMP REQUIREMENTS FOR ALL LIGHTING.
- COORDINATE WITH GENERAL NOTES AND ELECTRICAL/MECHANICAL DRAWINGS.
- ALL FINISHES FOR LIGHTS, MECHANICAL SUPPLIES AND DIFFUSERS, AND EXIT SIGNS TO BE SELECTED AND APPROVED BY ARCHITECT PRIOR TO BIDDING AND PURCHASE.
- CEILING TILE GRIDS SHALL BE CENTERED IN ROOMS UNLESS OTHERWISE NOTED. \*MINIMUM TILE SHALL BE USED AT ALL AREAS WHERE CEILING GRID TERMINATES. IF LESS THAN 4", GC SHALL CUT A 2X4 OR 2X2 TILE RESPECTIVELY TO THE REQUIRED LENGTH.
- ALL EXPOSED STRUCTURE, CONDUIT, UNSTRUT, BRACING, SPRINKLER PIPES, AND MECHANICAL TO BE PAINTED IN OPEN-1 CEILING AREAS. REFER TO A-7.1 FOR SCHEDULE.

**NOTES**



**ROBERT JOHNSON**  
architects  
1808 West Morehead St.  
Charlotte, NC 28208  
T 704 / 342.1058  
F 704 / 342.3043



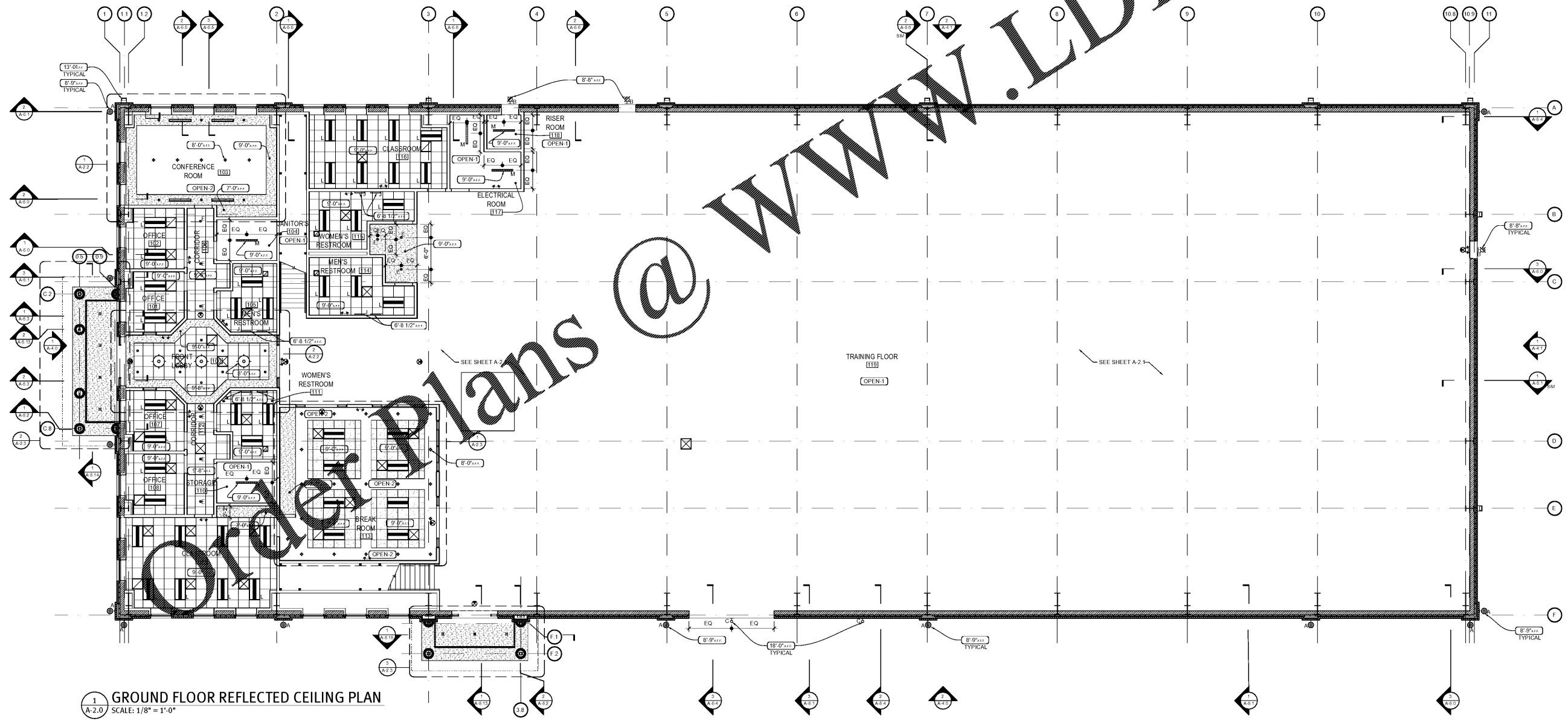
**MIDSOUTH CARPENTER'S TRAINING TRUST**  
LA VERGNE, TN

PROJECT NUMBER 1992  
ISSUE DATE 09.30.20  
FOR PERMIT

**DRAWING DATA**  
DRAWN BY: BM/LM  
CHECKED BY: TH  
**SHEET TITLE**  
**GROUND FLOOR REFLECTED CEILING PLAN**

This drawing is the property of ROBERT JOHNSON ARCHITECTS, Inc. and is not to be reproduced or copied in whole or in part. It is only to be used for the project and for specifically intended therein and is not to be used on any other project. It is to be returned upon request.

**SHEET NUMBER**  
**A-2.0**



**1 GROUND FLOOR REFLECTED CEILING PLAN**  
A-2.0 SCALE: 1/8" = 1'-0"