

NORTH

Date: 03-30-2020
Revisions: 06-20-2020

MATERIALS SCHEDULE

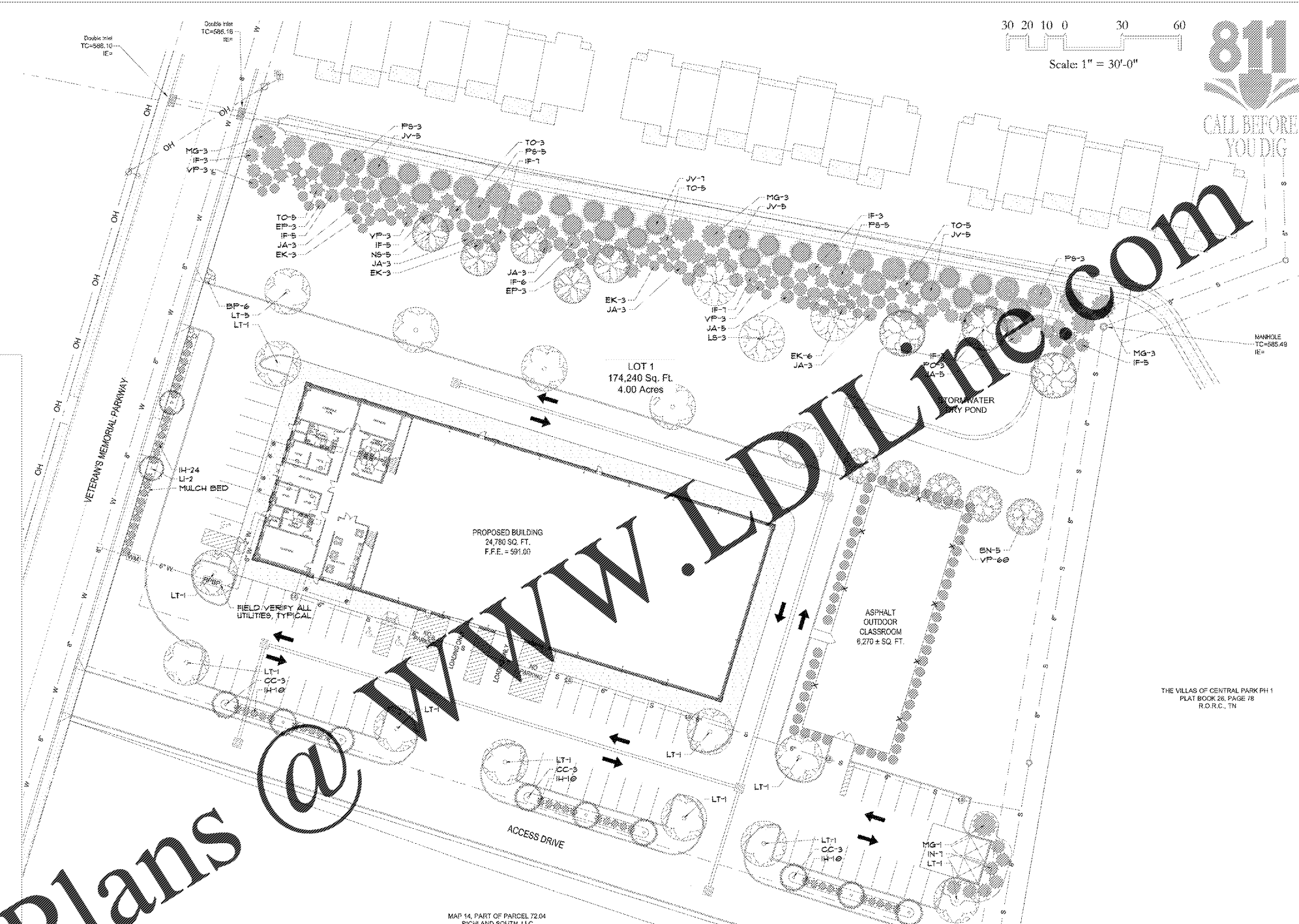
KEY AMOUNT	SCIENTIFIC NAME/ COMMON NAME	HEIGHT	SPREAD	TRUNK	NOTES
TREES					
BN 5	Betula nigra/ River Birch	8'-10'	4'-5'	3 Canes, 1" Each	
CC 9	Cercis canadensis 'Merlot'/ Merlot Redbud	6' Min.	2'-3'	1.5"	
IF 48	Ilex x 'Fosterii'/ Foster's Holly	5' Min.	2'-3'	FTB	
BI 7	Ilex x 'Nellie R. Stevens'/ Nellie R. Stevens Holly	5' Min.	2'-3'	FTB	
JA 25	Juniperus virginiana 'Idyllwild'/ Idyllwild Juniper	5' Min.	2'-3'	FTB	
JV 22	Juniperus virginiana/ Virginia Holly	7' Min.	2'-3'	FTB	
LI 2	Lagerstroemia indica/ Crapemyrtle	6' Min.	2'-3'	6 Canes, 1/2" Each	
LS 3	Liquidambar styraciflua/ Sweetgum	12'-14'	5'-6'	2.5"	
LT 16	Liriodendron tulipifera/ Tulip Poplar	12'-14'	5'-6'	2.5"	
MO 10	Magnolia grandiflora/ Southern Magnolia	7' Min.	2'-3'	FTB	
RS 5	Nyssa sylvatica/ Blackgum	12'-14'	5'-6'	2.5"	
PD 3	Platanus occidentalis/ American Sycamore	12'-14'	5'-6'	2.5"	
PI 16	Pinus strobus/ White Pine	7' Min.	2'-3'	FTB	
TO 18	Thuja occidentalis/ Arborvitae	6' Min.	2'-3'	FTB	
SHRUBS					
EK 15	Euonymus alatus 'Compactus'/ Manhattan Euonymus	18" Min.	15"-18"	F.T.B.	
EP 6	Elaeagnus pungens/ Thorny Elaeagnus	18" Min.	15"-18"	F.T.B.	
RI 54	Rosa rugosa 'Helen'/ Helen's Rose	18" Min.	15"-18"	F.T.B.	
VP 69	Viburnum x coccineum/ Prague Viburnum	18" Min.	15"-18"	F.T.B.	
TURF					
SEED	Rebel II Fine Filled Fescue	Seed @ 5 lbs per 1,000 sq ft			Install w/ wood chip straw
MISCELLANEOUS					
Mulch Bed	Hardwood Bark Mulch				Minimum 3" depth throughout.
NOTES					
FTB = Full To Bottom					
THE LANDSCAPE CONTRACTOR SHALL NOT MAKE SUBSTITUTIONS					

REQUIREMENTS

- PROPERTY AREA: 174,240 SF (4 ACRES)
- SITE LANDSCAPING:
 - 4 x 3 = 12 CANOPY
 - 4 x 3 = 12 UNDERSTORY
 - 4 x 15 = 60 SHRUBS
- PROPERTY ZONING: C-2
- ADJACENT ZONING: C-2 / RESIDENTIAL
- SUFFERYARD: TRANSITIONAL 3
- 467 LF AT 50' WIDE
- 467 / 10 = 47 LARGE EVERGREEN
- 467 / 5 = 94 MEDIUM EVERGREEN
- 467 / 30 = 16 CANOPY TREE
- 467 / 15 = 32 EVERGREEN SHRUBS

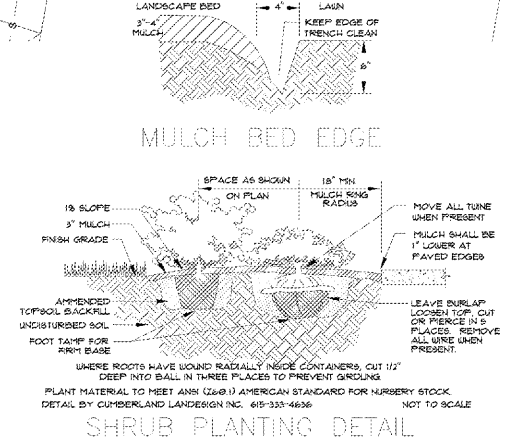
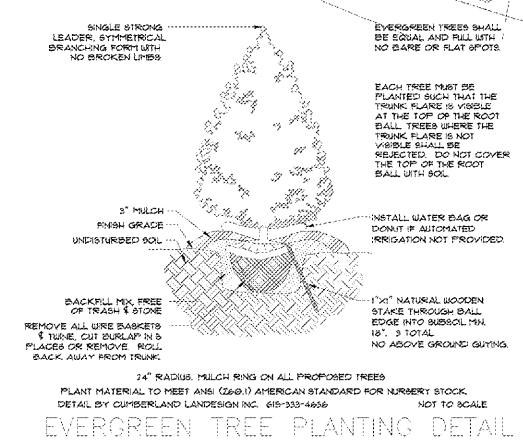
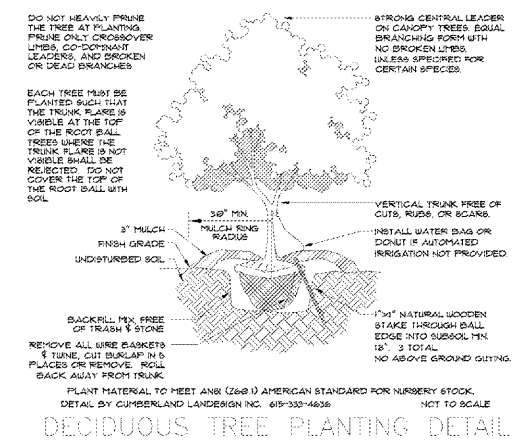
NOTES

- THE LANDSCAPE CONTRACTOR SHALL COORDINATE WITH THE APPROPRIATE UTILITY COMPANY AND SHALL BE RESPONSIBLE FOR ANY DAMAGE TO UTILITIES.
- THE LANDSCAPE CONTRACTOR SHALL BE RESPONSIBLE FOR THE FINE GRADING OF ALL PLANTING AREAS.
- ALL PLANTING AREAS SHALL BE FERTILIZED WITH 128/1000 S.F. OF 10-10-10 FERTILIZER.
- PLANTING MATERIAL SHALL HAVE A MINIMUM OF 3" DEPTH OF SHREDDED BARK MULCH FINELY FINISHED. NO BRICKS, 1/2" DIAMETER MAX. PIECES. REFUSE, CLAY, & STONE FREE.
- THE LANDSCAPE CONTRACTOR SHALL VERIFY ALL MATERIAL QUANTITIES.
- ALL DISTURBED AREAS SHALL BE PLANTED WITH TURF AS INDICATED ON THE MATERIALS SCHEDULE.
- PLANT SIZES SHOWN ARE MINIMUMS REQUIRED BY THE LOCAL MUNICIPALITY AND MATERIALS SHOWN HAVE BEEN SELECTED SPECIFICALLY FOR THIS PROJECT.
- ALL WIRE BASKETS SHALL BE COMPLETELY REMOVED AND DISPOSED OF. BURLAP SHALL BE PUNCTURED IN AT LEAST 5 PLACES. REMOVE ALL TWINE FROM BURLAP MATERIALS.
- SHAKE TREES IN PLACE PER DETAIL - WIRE OR ROPE GUYING IS NOT ALLOWED.
- NO CANOPY TREE SHALL BE LOCATED WITHIN 15' OF AN OVERHEAD UTILITY, POWER LINE, OR LIGHT POLE.
- NO CANOPY TREE SHALL BE LOCATED WITHIN A GAS, WATER, SEWER, UNDERGROUND ELECTRIC, CABLE, FIBER, OR PUBLIC UTILITY EASEMENT WITHOUT SIGNING OF A RELEASE WAIVER AND APPROVAL BY THE EASEMENT HOLDER.

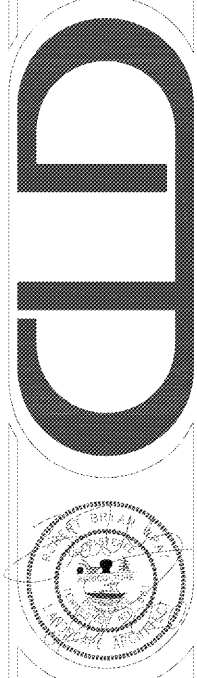


@

Order Plans



Landscape Compliance Plan for:
Mid South Carpenter's Regional Training Trust Fund
LaVergne, Rutherford County, Tennessee



20117
Sheet:
L1.0
1 of 1