

PANEL HLS														
VOLTAGE		480 /277		MAIN AMPS		100A		LOCATION		ELECTRICAL ROOM				
PHASE		3		A.L.C. RATING		35,000		MOUNTING		SURFACE				
WIRE		4						MAIN		BREAKER				
SERVING			LOAD (KVA)			BREAKER			LOAD (KVA)			SERVING		
LTS	REC	HVAC	MISC	AMPS	P	NO.	NO.	P	AMPS	LTS	REC	HVAC	MISC	
WAREHOUSE LIGHTS	2.8			20	1	1	2	1	20	0.8				
RELAY PANEL "RPLS"			0.6	20	1	3	4	1	20	1.0				
SPARE				20	1	5	5	1	20	1.5				
SPARE				20	1	7	8	1	20	1.2				
SPARE				20	1	9	10	1	20					
SPARE				20	1	11	12	1	20					
SPARE				20	1	13	14	1	20					
SPARE				20	1	15	16	1	20					
SPARE				20	1	17	18	1	20					
PANEL HLS1			6.7	60	3	19	20	3	30			0.6	TRANSFORMER TLS	
						21								
						22								
						23								

PANEL LLS														
VOLTAGE		208 /120		MAIN AMPS		60A		LOCATION		ELECTRICAL ROOM				
PHASE		3		A.L.C. RATING		10,000		MOUNTING		SURFACE				
WIRE		4						MAIN		BREAKER				
SERVING			LOAD (KVA)			BREAKER			LOAD (KVA)			SERVING		
LTS	REC	HVAC	MISC	AMPS	P	NO.	NO.	P	AMPS	LTS	REC	HVAC	MISC	
FA CONTROL PANEL			0.6	20L	1	1	2	1	20			0.6	BUS MAINT POWER SUPPLY	
SPARE				20	1	3	4	1	20			0.6	TRANSPORT POWER SUPPLY	
SPARE				20	1	5	6	1	20			0.6	IT POWER SUPPLY	
SPARE				20	1	7	8	3	40				TVSS	
SPARE				20	1	9	10							
SPARE				20	1	11	12							

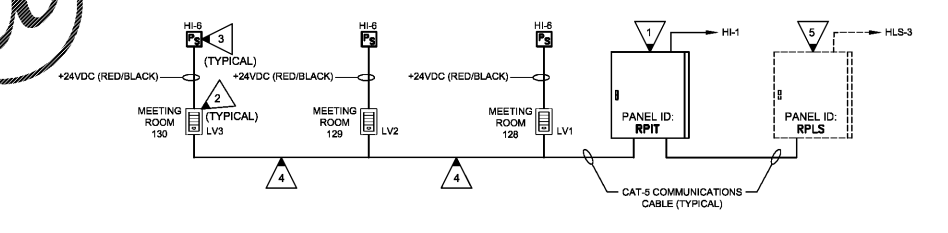
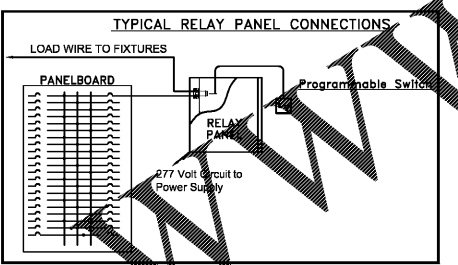
LOW VOLTAGE SWITCHING SCHEDULE			
RELAY PANEL		RPLS	
RELAY	SWITCH	CIRCUIT PANELBOARD	LIGHTING CONTROLLED (AREA)
1	LV1	HLS-1	WAREHOUSE LIGHTS
2	PE/TC	HLS-2	EXTERIOR WALL PACKS
3	PE/TC	HLS-4	EXTERIOR WALL PACKS
4	LV3	HLS-10	IT MEETING ROOM 128 LIGHTS
5	LV4	HLS-10	IT MEETING ROOM 129 LIGHTS
6	LV5	HLS-10	IT MEETING ROOM 130 LIGHTS
7			SPARE
8			SPARE

- LOW VOLTAGE CONTROL NOTES:**
- ALL LOW VOLTAGE CABLING SHALL BE INSTALLED IN CONDUIT.
  - COORDINATE ALL FINAL WIRING AND CONNECTIONS WITH MANUFACTURE PRIOR TO INSTALLATION.
  - DIVISION 26 IS RESPONSIBLE FOR REVIEWING LOW VOLTAGE SWITCHING SCHEDULE AND PROVIDING REQUIRED NUMBER OF PHASE (SWITCH/LEG) CONDUCTORS FROM PANEL RELAYS IN ORDER TO ACHIEVE SWITCHING OPTIONS AS NOTED.
  - PROGRAMMING AS INDICATED IN SWITCHING LEGEND AND RELAY SCHEDULE IS DEFAULT FUNCTIONALITY DURING HOURS OF OPERATION ONLY. DIVISION 26 SHALL COORDINATE HOURS OF OPERATION AND EXACT CONTROL FUNCTIONS WITH OWNER'S REP DURING TRAINING SESSION AS NOTED IN SPECIFICATIONS.
  - PROVIDE CABLING PER SPECIFICATIONS FROM ALL WALL CONTROLLER TO RELAY PANEL AS SHOWN. PROVIDE NUMBER OF SCENES FOR EACH CONTROLLER AS SHOWN IN LOW VOLTAGE SWITCHING LEGEND.
  - LOW VOLTAGE CABLES SHALL BE AS RECOMMENDED BY MANUFACTURER OF SYSTEM BEING INSTALLED, CONDUIT SHALL BE SIZED IN ACCORDANCE WITH N.E.C.
  - COORDINATE ALL FINAL PROGRAMMING OF ALL LOW VOLTAGE SWITCHES WITH OWNER.
  - PANEL SHALL BE FULLY PROGRAMMABLE AND CAPABLE OF BEING CONTROLLED VIA NETWORK.
  - PROVIDE FEED THROUGH TYPE PANEL.
  - COORDINATE EXACT RELAYS REQUIRED WITH FIXTURES.

LOW VOLTAGE SWITCHING SCHEDULE			
RELAY PANEL		RPIT	
RELAY	SWITCH	CIRCUIT PANELBOARD	LIGHTING CONTROLLED (AREA)
1	LV3	HI-6	MEETING ROOM 128 LIGHTS
2	LV4	HI-6	MEETING ROOM 129 LIGHTS
3	LV5	HI-6	MEETING ROOM 130 LIGHTS
4	PE/TC	HI-3	
5-8			

- LOW VOLTAGE SWITCHING LEGEND FOR "RPIT":**
- LV3** LOCATED AT MEETING ROOM #128
    - SCENE 1: "MEETING ROOM 128" FUNCTION - ON/OFF - DIM UP/DOWN (CONTROLS RELAYS #1)
    - SCENE 2: "MEETING ROOM 128/129" FUNCTION - ON/OFF - DIM UP/DOWN (CONTROLS RELAYS #1 & #2)
    - SCENE 3: "MEETING ROOM 128/129/130" FUNCTION - ON/OFF - DIM UP/DOWN (CONTROLS RELAYS #1 THRU #3)
    - SCENE 4: "SPARE" FUNCTION - ON/OFF - DIM UP/DOWN
  - LV4** LOCATED AT MEETING ROOM #129
    - SCENE 1: "MEETING ROOM 129" FUNCTION - ON/OFF - DIM UP/DOWN (CONTROLS RELAYS #2)
    - SCENE 2: "MEETING ROOM 128/129" FUNCTION - ON/OFF - DIM UP/DOWN (CONTROLS RELAYS #1 & #2)
    - SCENE 3: "MEETING ROOM 128/130" FUNCTION - ON/OFF - DIM UP/DOWN (CONTROLS RELAYS #2 & #3)
    - SCENE 4: "MEETING ROOM 128/129/130" FUNCTION - ON/OFF - DIM UP/DOWN (CONTROLS RELAYS #1 THRU #3)
  - LV5** LOCATED AT MEETING ROOM #130
    - SCENE 1: "MEETING ROOM 130" FUNCTION - ON/OFF - DIM UP/DOWN (CONTROLS RELAYS #3)
    - SCENE 2: "MEETING ROOM 128/130" FUNCTION - ON/OFF - DIM UP/DOWN (CONTROLS RELAYS #2 & #3)
    - SCENE 3: "MEETING ROOM 128/129/130" FUNCTION - ON/OFF - DIM UP/DOWN (CONTROLS RELAYS #1 THRU #3)
    - SCENE 4: "SPARE" FUNCTION - ON/OFF - DIM UP/DOWN

- PROGRAMMING NOTES:**
- CONTROLLERS SHALL BE CAPABLE OF LOCKING OUT CONTROL FROM A SINGLE ROOM TO MULTIFUNCTIONAL ROOMS WHEN MULTIFUNCTIONAL ROOMS ARE IN USE.



1 DETAIL - RELAY PANEL RISER  
E.6.1 SCALE: NONE

Order Plans @



This document is property of 2KM Architects, Inc. The unauthorized reproduction, copying, or otherwise use of this document is strictly prohibited and any infringement thereupon may be subject to legal action. Copyright © 2020, 2KM Architects, Inc.

KEY PLAN:

REVISIONS:	
Date	Description

**CCSD  
I.T./TRAINING  
DEPARTMENT**

FOR  
COLUMBIA COUNTY SCHOOL DISTRICT

4395 RIVERWATCH PARKWAY  
EVANS, GA 30809

DRAWING TITLE	
<b>EXISTING PANELBOARD SCHEDULES</b>	
PROJECT NO. 20-04C	DRAWING NO.
DATE 10/26/2020	<b>E6.1</b>
DRAWN BY JH	
PAPER 24"x36"	
ISSUE CD	

