

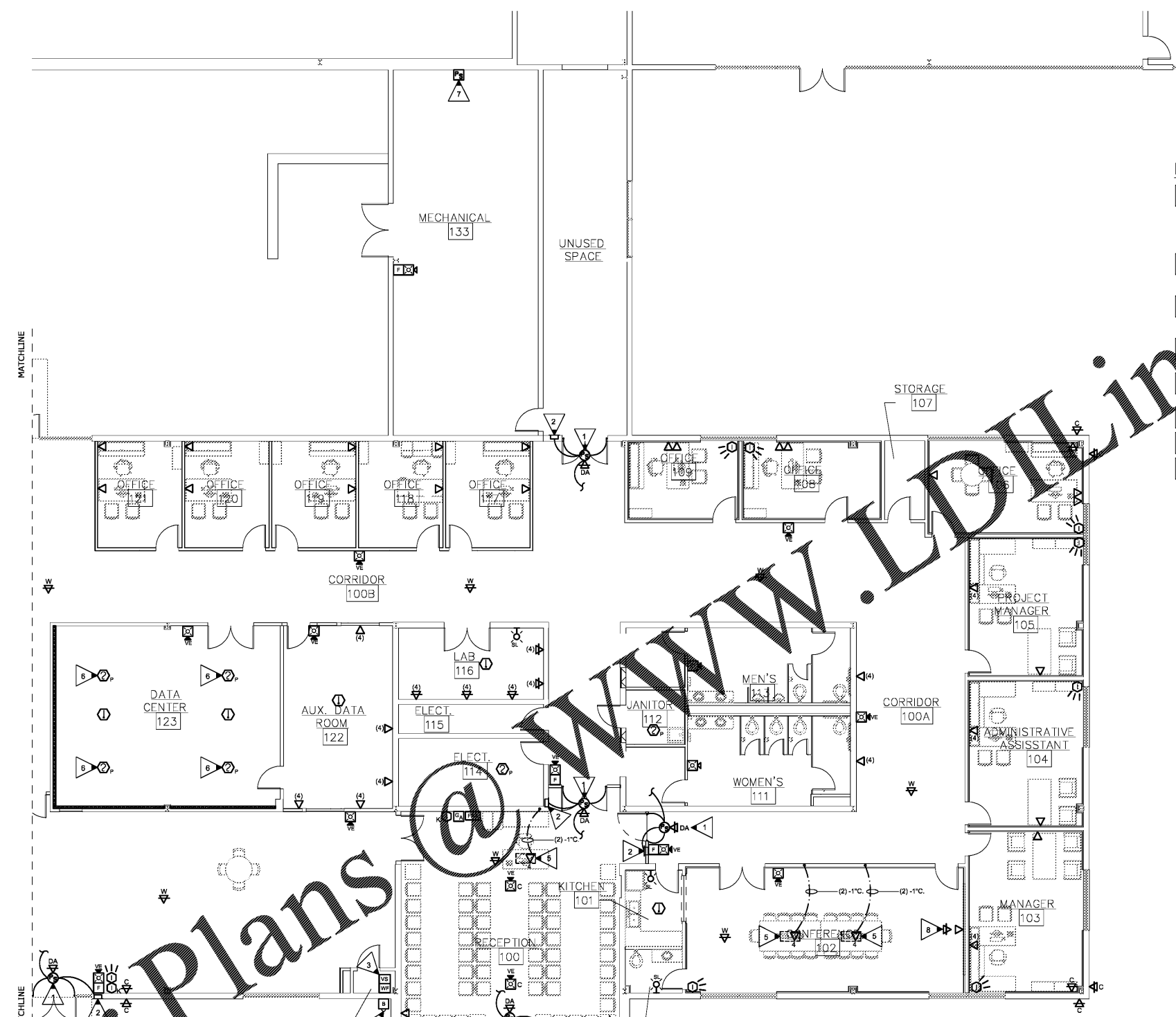
This document is property of 2KM Architects, Inc. The unauthorized reproduction, copying, or otherwise use of this document is strictly prohibited and any infringement thereupon may be subject to legal action.
 Copyright © 2020, 2KM Architects, Inc.

GENERAL NOTES:

- DO NOT SCALE DRAWINGS TO LOCATE DEVICES.
- ALL NOTES PER SHEET E1.0 APPLY TO THIS SHEET.
- SEE SHEET E1.1 FOR EXISTING NOTIFIER FIRE ALARM CONTROL PANEL LOCATION. CONNECT ALL NEW FIRE ALARM DEVICES TO EXISTING FIRE ALARM SYSTEM. PROVIDE ALL EQUIPMENT AND PROGRAMMING AS REQUIRED FOR A COMPLETE AND OPERATIONAL SYSTEM.
- SEE SHEET E1.1 FOR EXISTING ADEMCO INTRUSION ALARM CONTROL PANEL LOCATION. PROVIDE ALL EQUIPMENT AND PROGRAMMING AS REQUIRED FOR A COMPLETE AND OPERATIONAL SYSTEM. INTRUSION ALARM CABLING SHALL BE ROUTED IN CONDUIT FROM CONTROL PANEL THRU OPEN WAREHOUSE AREA TO ABOVE ACCESSIBLE CEILING IN CORRIDOR 302A.
- SEE SHEET E1.3 FOR P.I.V. LOCATION AND NOTES.
- SEE SHEET E5.2 FOR COMMUNICATION RISER, AND DETAILS.
- SUBSCRIPT "C" AT FIRE ALARM HORN STROBE DEVICE INDICATES CEILING MOUNTED DEVICE.

KEYED NOTES:

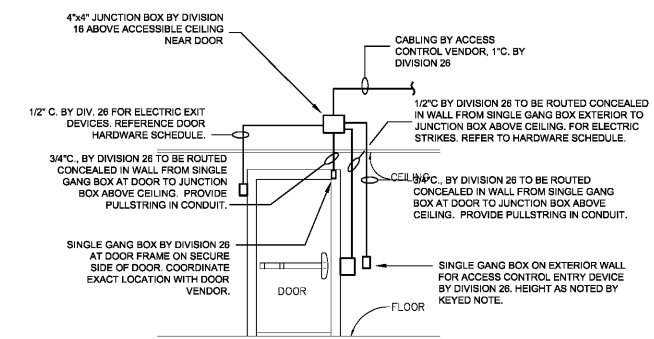
- PROVIDE 120 VOLT POWER TO POWER SUPPLY FOR DOOR ACCESS CONTROL HARDWARE. PROVIDE 120V RECEPTACLE NEAR DOOR ACCESS CONTROLS JUNCTION BOX ABOVE DOOR TO SERVE POWER SUPPLY AND DOOR ACCESS SYSTEM. ROUTE 3/4" C. FROM JUNCTION BOX TO DOOR FRAME. SEE DETAIL 2/E5.0 FOR DOOR ACCESS CONTROL ROUGH IN.
- JUNCTION BOX FOR CARD READER MOUNT AT 4'-0" OFF. STUB UP 1" CONDUIT TO DOOR ACCESS CONTROLS. JUNCTION BOX VENT TO EXTERIOR AT ROOF. PROVIDE J-BOX WITH OWNER PRIOR TO ROUGH IN.
- PROVIDE QUANTITY OF FLOW AND TAMPER SWITCHES AS REQUIRED. COORDINATE EXACT LOCATION AND IDENTITIES OF FLOW AND TAMPER SWITCHES WITH FIRE PROTECTION CONTRACTOR PRIOR TO ROUGH IN.
- PROVIDE 120V BELL FROM NEAREST RECEPTACLE. BELL SHALL SOUND UPON ACTIVATION OF FLOW AND TAMPER SWITCHES.
- SAW CUT, PATCH AND REPAIR CONCRETE SLAB TO ROUTE FRESH CONDUIT AND DATA CABLING FOR FLOOR BOX. DATA CABLING SHALL BE RATED FOR UNDERGROUND USE.
- LOCATE SMOKE DETECTOR UNDER RAISED FLOOR.
- FIRE ALARM POWER SUPPLY TO SERVE IT DEPARTMENT. PROVIDE QUANTITY AS REQUIRED.
- COORDINATE EXACT HEIGHT AND LOCATION OF TV MONITOR WITH ARCHITECT/OWNER PRIOR TO ROUGH IN. LOCATE DEVICES DIRECTLY BEHIND TV MONITOR.



Order Plans @ WWW.LDOnline.com

- DATA OUTLET BOX/CONDUIT LEGEND**
- DATA OUTLET, +18" TO CENTER LINE OF OUTLET UNLESS NOTED OTHERWISE. STUB UP 1.25" C. TO CEILING SPACE ABOVE. PROVIDE 4 1 1/8" SQUARE x 1.50" D BOX WITH 1 GANG PLASTER RING.
 - DATA OUTLET, +48" TO CENTER LINE OF OUTLET UNLESS NOTED OTHERWISE. STUB UP 1.25" C. TO CEILING SPACE ABOVE. PROVIDE 4 1 1/8" BOX WITH 1 GANG PLASTER RING.
 - DATA OUTLET, +18" TO CENTER LINE OF OUTLET UNLESS NOTED OTHERWISE. STUB UP 1" C. IN EACH BOX TO CEILING SPACE ABOVE. PROVIDE TWO (2) 4" SQUARE x 1.50" D BOX WITH 1 GANG PLASTER RING.
 - DATA OUTLET, +48" TO CENTER LINE OF OUTLET UNLESS NOTED OTHERWISE. STUB UP 1" C. IN EACH BOX TO CEILING SPACE ABOVE. PROVIDE TWO (2) 4" SQUARE x 1.50" D BOX WITH 1 GANG PLASTER RING.

1 SYSTEMS PLAN
 E5.0 SCALE: 1/8" = 1'-0"

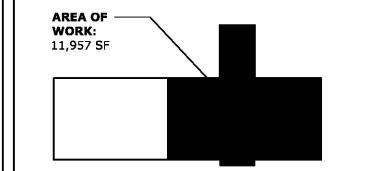


2 DETAIL - ACCESS CONTROL FOR DOORS
 E5.0 SCALE: NONE
 NOTE: TYPICAL FOR ALL ACCESS CONTROL DOORS.

EDC ELECTRICAL ENGINEERS
 1201 BROAD ST., SUITE 1-A
 AUGUSTA, GA 30901
 PH: (706) 724-3551
 FAX: (706) 724-8507
 EDC PROJECT #: 19130

KEY PLAN:

PLAN NORTH



REVISIONS:

Date	Description

CCSD I.T./TRAINING DEPARTMENT
 FOR
 COLUMBIA COUNTY SCHOOL DISTRICT
 4395 RIVERWATCH PARKWAY
 EVANS, GA 30809

DRAWING TITLE

SYSTEMS PLAN

PROJECT NO.	20-04C	DRAWING NO.	E5.0
DATE	10/26/2020		
DRAWN BY	JH		
PAPER	24"x36"		
ISSUE	CD		