

This document is property of 2KM Architects, Inc. The unauthorized reproduction, copying, or otherwise use of this document is strictly prohibited and any infringement thereupon may be subject to legal action. Copyright © 2020, 2KM Architects, Inc.

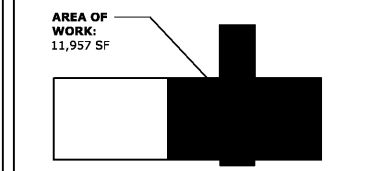
GENERAL NOTES:

- DO NOT SCALE DRAWINGS TO LOCATE DEVICES.
- ALL NOTES PER SHEET E1.0 APPLY TO THIS SHEET.
- HOMERUN CIRCUITS ARE SHOWN AS NOTED IN CONNECTION SCHEDULES OR ON DRAWINGS. PROVIDE ALL BRANCH CIRCUITS, CONDUITS AND CONDUCTORS AS NECESSARY TO CONNECT ALL EQUIPMENT OR DEVICES SHOWN ON THE CIRCUIT.

KEYED NOTES:

- COORDINATE EXACT HEIGHT AND LOCATION OF TV MONITOR WITH ARCHITECT/OWNER PRIOR TO ROUGH IN. LOCATE DEVICES DIRECTLY BEHIND TV MONITOR.
- SAW CUT, PATCH AND REPAIR CONCRETE SLAB TO ROUTE NEW CONDUIT AND CONDUCTORS FOR FLOOR BOX.
- COORDINATE LOCATION OF DATA RACK RECEPTACLES AND UPS RECEPTACLE/RECEPTACLE TYPES WITH OWNER PRIOR TO INSTALLATION.
- ROUTE 1" C, 1#6G TO DESIGNATED PANEL. PROVIDE GROUND BAR AND GROUNDING OF RACK PER SHEET E5.1 DETAIL 1/ES.1. COORDINATE EXACT LOCATION OF GROUND BAR WITH OWNER PRIOR TO ROUGH IN AND ADJUST ACCORDINGLY.
- CONDUIT FOR SPRINKLER CONTROLS. COORDINATE LOCATION WITH SPRINKLER CONTRACTOR.
- FIRE ALARM POWER SUPPLY. ROUTE 3/4" C, 3#10 TO PANEL "LLS". SEE SHEET E1.1 FOR PANEL "LLS" LOCATION. UTILIZE EXISTING QUADIP BREAKER IN PANEL "LLS" AT DESIGNATED SPACE TO SERVE POWER SUPPLY. SEE SHEET E6.1 FOR EXISTING PANEL SCHEDULE.
- UTILIZE EXISTING BACKBOX/CONDUIT AND PROVIDE NEW CONDUCTORS/DEVICES AS SHOWN AT THIS LOCATION. FIELD VERIFY EXACT LOCATION OF EXISTING BACKBOX. EXISTING FIELD CONDITIONS SHALL GOVERN.

KEY PLAN:



REVISIONS:

Date	Description

**CCSD
 I.T./TRAINING
 DEPARTMENT**

FOR
 COLUMBIA COUNTY SCHOOL DISTRICT

4395 RIVERWATCH PARKWAY
 EVANS, GA 30809

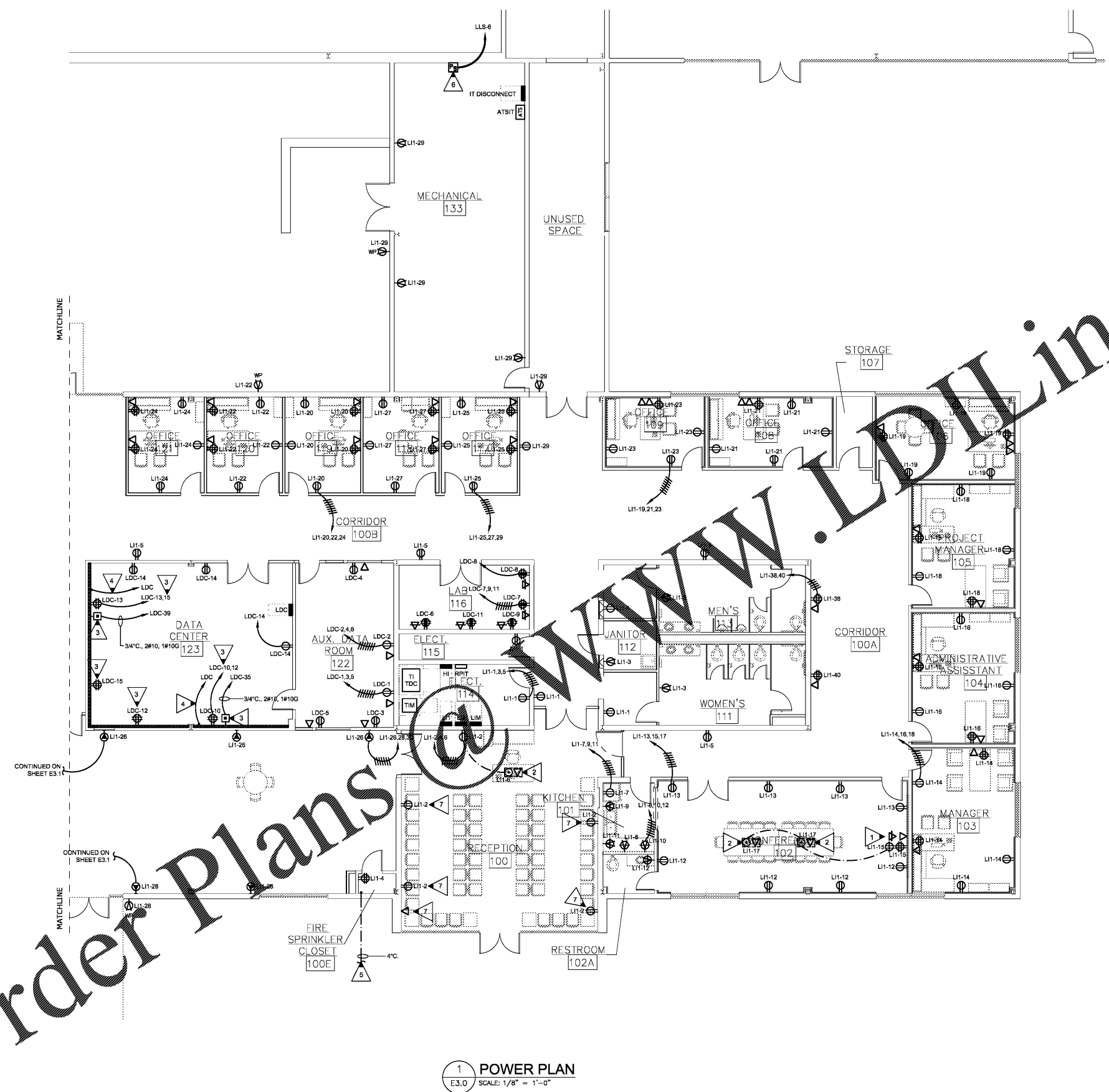
DRAWING TITLE

POWER PLAN

PROJECT NO.	20-04C	DRAWING NO.	
DATE	10/26/2020		
DRAWN BY	JH		
PAPER	24"x36"		
ISSUE	CD		

EDC ELECTRICAL ENGINEERS
 1201 BROAD ST., SUITE 1-A
 AUGUSTA, GA 30901
 PH: (706) 724-3551
 FAX: (706) 724-8507
 EDC PROJECT #: 19130

Order Plans @ www.LDOnline.com



1 POWER PLAN
 E3.0 SCALE: 1/8" = 1'-0"