

This document is property of 2KM Architects, Inc. The unauthorized reproduction, copying, or otherwise use of this document is strictly prohibited and any infringement thereupon may be subject to legal action. Copyright © 2020, 2KM Architects, Inc.

**GENERAL NOTES:**

- DO NOT SCALE DRAWINGS TO LOCATE EQUIPMENT.
- ALL NOTES PER SHEET E1.0 APPLY TO THIS SHEET.

**KEYED NOTES:**

- EXISTING "MSB".
- EXISTING (4) 4" EMPTY CONDUITS INSTALLED IN PREVIOUS PROJECT TO SERVE "IT DEPARTMENT" ARE SHOWN AT APPROXIMATE LOCATION. PROVIDE MISCELLANEOUS MATERIAL AS REQUIRED TO EXTEND (2) EXISTING 4" CONDUITS TO "IT DEPARTMENT DISCONNECT". (2) EXISTING 4" CONDUITS SHALL REMAIN AT CEILING SPACE. PROVIDE CAPS ON EXISTING REMAINING CONDUITS. CONTRACTOR SHALL FIELD VERIFY EXACT ROUTING WITH EXISTING CONDITIONS. SHEET E6.0 FOR CONDUCTOR REQUIREMENTS.
- EXISTING NOTIFIER FIRE ALARM CONTROL PANEL.
- EXISTING ADEMCO INTRUSION ALARM PANEL. PROVIDE ALL EQUIPMENT AND PROGRAMMING AS REQUIRED FOR A COMPLETE AND OPERATIONAL SYSTEM. EXISTING INTRUSION ALARM PANEL SHALL BE PARTITIONED TO ALLOW IT DEPARTMENT AREA TO BE INDEPENDENTLY CONTROLLED FROM THE REMAINDER OF THE FACILITY. INTRUSION ALARM CABLING SHALL BE ROUTED IN CONDUIT FROM CONTROL PANEL THRU OPEN WAREHOUSE AREA TO ABOVE ACCESSIBLE CEILING IN "UNUSED SPACE".
- EXISTING CABLE TRAY INSTALLED IN PREVIOUS PROJECT SHOWN AT APPROXIMATE LOCATION. CONTRACTOR SHALL FIELD VERIFY EXACT LOCATION WITH EXISTING CONDITIONS.
- SEE SHEET E6.1 FOR ADDITIONAL REQUIREMENTS FOR CONNECTIONS TO EXISTING RELAY PANELS.
- COORDINATE EXACT TERMINATION POINT OF CONDUIT(S) WITH OWNER PRIOR TO ROUGH IN.

**KEY PLAN:**

PLAN NORTH

**AREA OF WORK:**  
19,600 SF

**REVISIONS:**

Date	Description

**CCSD  
 I.T./TRAINING  
 DEPARTMENT**

FOR  
 COLUMBIA COUNTY SCHOOL DISTRICT

4395 RIVERWATCH PARKWAY  
 EVANS, GA 30809

**DRAWING TITLE**

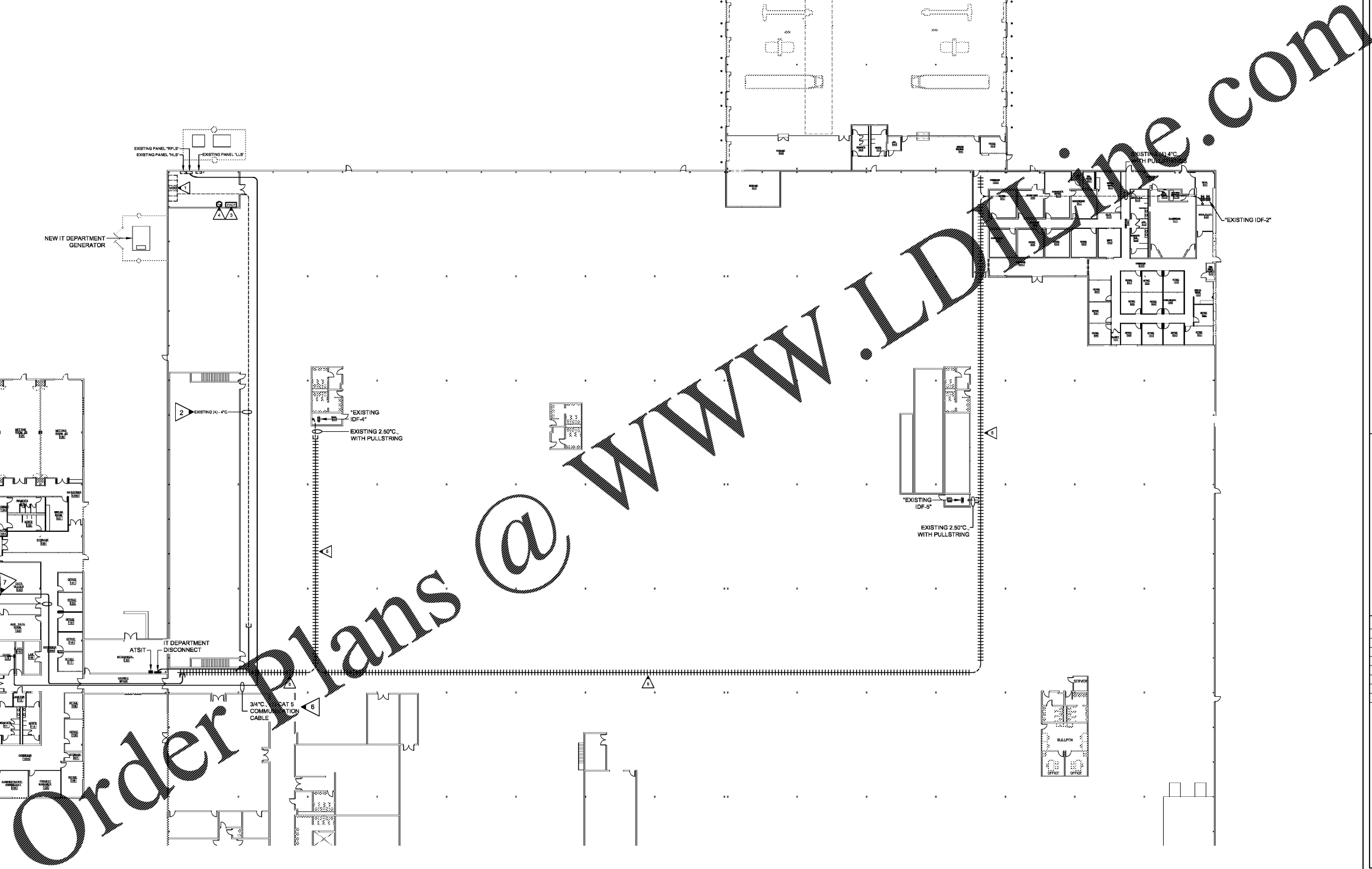
**FLOOR PLAN-WEST**

PROJECT NO.	20-04C	DRAWING NO.	
DATE	10/26/2020	DRAWN BY	JH
PAPER	24"x36"		
ISSUE	CD		

**E1.1**

**EDC** ELECTRICAL ENGINEERS  
 1201 BROAD ST., SUITE 1-A  
 AUGUSTA, GA 30901  
 PH: (706) 724-3551  
 FAX: (706) 724-8507  
 EDC PROJECT #: 19130

1 FLOOR PLAN- WEST  
 E1.1 SCALE: 1" = 30'-0"



**Order Plans @**

**WWW.LDOnline.com**