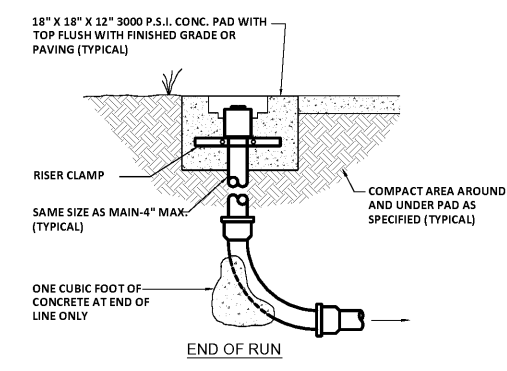
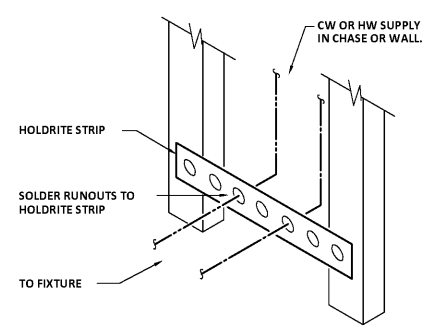


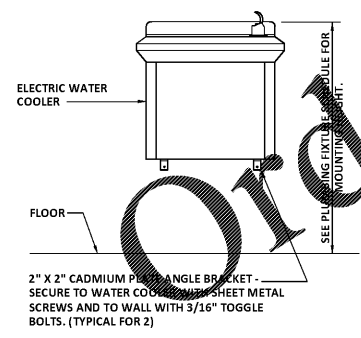
1 WATER VALVE LOCATOR TAG
P3.1 NOT TO SCALE



2 CLEANOUT DETAILS
P3.1 SCHEMATIC ONLY



3 RUNOUT ANCHOR DETAILS
P3.1 SCHEMATIC



4 WATER COOLER DETAIL
P3.1 NOT TO SCALE

GENERAL PLUMBING NOTES

NOT ALL EXISTING WORK IS SHOWN AND THAT SHOWN IS IN ITS APPROXIMATE LOCATION AND ARRANGEMENT. CONTRACTOR SHALL BE RESPONSIBLE FOR VERIFYING LOCATIONS, ARRANGEMENTS, SIZES AND CONDITIONS AND IN CASE OF DISCREPANCY TO CONTACT THE ARCHITECT FOR RELOCATION AND REMOVAL OF SAID ELEMENTS IN ACCORDANCE WITH THE BASIC INTENTIONS INDICATED BY THE DRAWINGS AND DETAILS. NOT ALL EXISTING WORK IS SHOWN AND THAT SHOWN IS IN ITS APPROXIMATE LOCATION AND ARRANGEMENT. EXACT LOCATION, ARRANGEMENT, AND SIZES SHALL BE VERIFIED ON THE JOB BEFORE PROCEEDING WITH ANY NEW WORK. EXACT LOCATIONS AND ROUGHING REQUIREMENTS FOR ALL FIXTURES AND EQUIPMENT SHALL BE DETERMINED FROM ARCHITECTURAL DRAWINGS, LARGE SCALE ARCHITECTURAL DETAILS AND APPROVED MANUFACTURER'S SHOP DRAWINGS. PARTICULAR ATTENTION SHALL BE DIRECTED TO FIXTURES OR EQUIPMENT FURNISHED UNDER OTHER DIVISIONS.

EXERCISE CARE SO AS NOT TO CUT ANY EXISTING UTILITIES OR SERVICES. WHERE AN EXISTING UTILITY LINE OR SERVICE LINE IS CUT IT SHALL BE REPAIRED TO "LIKE-NEW" CONDITION. INTERRUPTION OF SERVICE SHALL NOT BE MADE WITHOUT PRIOR WRITTEN PERMISSION OF THE OWNER.

EXACT LOCATIONS AND ROUGHING REQUIREMENTS FOR ALL FIXTURES AND EQUIPMENT SHALL BE DETERMINED FROM ARCHITECTURAL DRAWINGS, LARGE SCALE ARCHITECTURAL DETAILS AND APPROVED MANUFACTURER'S SHOP DRAWINGS. INVERT ELEVATIONS SHOWN SHALL BE VERIFIED ON THE JOB BEFORE INSTALLING ANY NEW PIPE. INSTALL TEST-TEES WHEN THE SANITARY SEWER SYSTEM IS TO BE TESTED IN SECTIONS. PIPING IS SHOWN IN ITS GENERAL LOCATION (UNLESS DIMENSIONED).

REFER TO ARCHITECTURAL FINISH SCHEDULE AND ELEVATIONS FOR DETAILS OF FLOORS WHERE FLOOR DRAINS AND CLEANOUTS ARE LOCATED.

PROVIDE SLEEVES FOR PIPES PASSING THRU FLOORS, MASONRY WALLS AND FIRE OR SMOKE PARTITIONS. PACK ANNULAR SPACE BETWEEN PIPE WITH MATERIAL APPROVED IN U.L. BUILDING DIRECTORY.

COORDINATE LOCATIONS OF FLOOR DRAINS AND CLEANOUTS IN MECHANICAL ROOMS WITH HVAC EQUIPMENT.

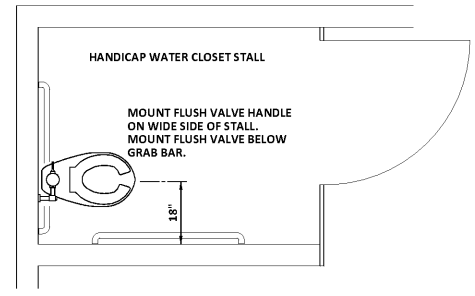
PROVIDE DRAIN TRAP SEALS FOR ALL HUB DRAINS, FLOOR DRAINS & FLOOR SINKS.

VENT TERMINALS SHALL NOT BE LOCATED WITHIN 10' OF FRESH AIR INTAKE. COORDINATE WITH APPROPRIATE TRADE.

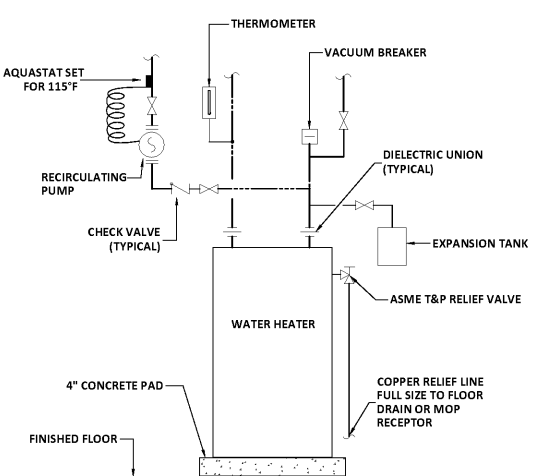
CENTER CLEANOUTS IN ALL CORRIDORS.

PLUMBING LEGEND

SYMBOL	DESCRIPTION	SYMBOL	DESCRIPTION
---	WASTE OR SANITARY SEWER	⊘	SHUTOFF VALVE
---	VENT	---	COLD WATER
---	EXISTING CLEANOUT	---	HOT WATER
---	NEW WORK CONNECTION TO EXISTING WORK	---	HOT WATER CIRCULATING
---	EXISTING WASTE OR SANITARY SEWER	WH +	WALL HYDRANT
FD ⊕	FLOOR DRAIN	CO ⊕	CLEANOUT
PDI'X' ⊕	WATER HAMMER ARRESTOR	WH +	WALL HYDRANT
---	EXISTING VENT	---	EXISTING COLD WATER
---	EXISTING FLOOR DRAIN	---	EXISTING HOT WATER
		EWH +	EXISTING WALL HYDRANT



5 CONTROL LOCATIONS AT HANDICAPPED WATER CLOSET
P3.1 SCHEMATIC



6 WATER HEATER PIPING DETAIL
P3.1 NOT TO SCALE

PLUMBING FIXTURE SCHEDULE

SYMBOL	FIXTURE	WASTE CONN. BRANCH	VENT	COLD WATER	HOT WATER	RIM HGT. BASIS OF DESIGN	NOTES
P-1	WATER CLOSET (A.D.A. ADULT)	4"	2"	1"	-	18"	KOHLER K-96057-B, SLOAN 111-1.28 F.V., BENEKE 527-55 WHITE SEAT
P-2	WATER CLOSET	4"	2"	1"	-	15"	KOHLER K-96053, SLOAN 111-1.28 F.V., BENEKE 527-55 WHITE SEAT
P-3	URINAL (ADA)	2"	1-1/2"	1"	-	24"	K-5016-ET, SLOAN 186-0.5 FLUSH VALVE
P-4	URINAL	2"	1-1/2"	1"	-	24"	K-5016-ET, SLOAN 186-0.5 FLUSH VALVE
P-5	LAVATORY (WALL HUNG)(ADA)	1-1/4"	1-1/2"	1/2"	1/2"	APRON BOTTOM 29"	K-2032, CHICAGO 802A-E2805 FAUCETS McGUIRE 155A GRID DRAIN
P-6	LAVATORY (DECK MOUNT) (A.D.A. ADULT)	1-1/4"	1-1/2"	1/2"	1/2"	DECK	K-2905-4 (20x16), CHICAGO 802A-E2805 FAUCETS McGUIRE 155A GRID DRAIN
P-7	MOP SINK	3"	2"	1/2"	1/2"	FAUCET @ 36"	FIAT TSB 610, 832-AA, 889-CC, CHICAGO 802A-E2805 RCF FAUCET,
P-8	ELECTRIC WATER COOLER (A.D.A.)	1-1/4"	1-1/2"	1/2"	-	APRON BOTTOM 27"	EIKAY 9885 STAINLESS STEEL FINISH
P-9	WATER HEATER (30 GALLON)	-	-	1"	3"	-	RHEEM EGSP30, 30 GALLON, 4.5 KW, 23 GAL/HR @ 80°F RISE
P-10	RECIRCULATING PUMP	-	-	-	-	48"	B&G NBF-22 2 GPM @ 14 FT. HEAD
P-11	DOUBLE SINK (A.D.A.)	1-1/2"	1-1/2"	1/2"	1/2"	DECK	JUST DL-ADA-1933-AGR 6" DEEP, 18GA SYMMONS S-23-1.5 FAUCET, (2) McGUIRE 151A DRAINS
P-12	CONDENSATE DRAIN BOX	1-1/2"	1-1/2"	-	-	-	ACORN M8200-ES10 BOX WITH 1" DAM & LOCKING COVER
HB	ROSE BIBS	-	-	3/4"	-	-	WOODFORD B-74 SERIES (BOX)
WH	WALL HYDRANT	-	-	3/4"	-	-	SMITH 5519 SERIES (BOX)
CO-1	CLEANOUT (INTERIOR)	-	-	-	-	-	SMITH 4031
CO-2	CLEANOUT (PLUG TYPE)	-	-	-	-	-	SMITH 4292
FD-1	FLOOR DRAIN (GENERAL)	-	-	-	-	-	SMITH 2005L (4)(7)
FD-2	FLOOR DRAIN (MECH.)	-	-	-	-	-	SMITH 2005L-F37-CI (5)(7)

- ### PLUMBING FIXTURE SCHEDULE KEYNOTES
- RIM HEIGHT FOR GUIDANCE ONLY. SEE ARCHITECTS DRAWINGS FOR EXACT MOUNTING HEIGHT. ROUGH WATER AND SANITARY CONNECTION AS REQUIRED. RIM HEIGHT INCLUDES SPECIFIED SEAT ON WATER CLOSETS.
 - PROVIDE AQUASTAT EQUAL TO HONEYWELL L4006 SERIES & TIME CLOCK EQUAL TO INTERMATIC ET1125C SERIES.
 - PROVIDE "TRUEBRO LAV GUARD" PROTECTIVE PIPE COVERS ON WASTE AND SUPPLY PIPING.
 - PROVIDE 7" STRAINER ON 3" DRAINS AND 9" STRAINER ON 4" DRAINS. PROVIDE ROUND TOP FOR ALL FLOOR DRAINS.
 - RIM FLUSH WITH FINISHED FLOOR.
 - PROVIDE AMTROL ST-5 EXPANSION TANK.
 - PROVIDE DRAIN TRAP SEAL EQUAL TO MIFAB MI-GARD.

2.K.M. ARCHITECTS, INC.
529 GREENE ST. AUGUSTA, GA. 30901
(706) 735-3131 FAX (706) 735-7100

REGISTERED PROFESSIONAL ENGINEER
STATE OF GEORGIA
No. 25888
Exp. 12/31/2020

This document is property of 2KM Architects, Inc. The unauthorized reproduction, copying, or otherwise use of this document is strictly prohibited and any infringement thereupon may be subject to legal action. Copyright © 2020, 2KM Architects, Inc.

PFA ENGINEERING
PRUETT, FORD & ASSOCIATES, INC.
GA. LIC. PEP000760 EXP. 06/30/2022
1201 BROAD STREET, SUITE 30A
AUGUSTA, GEORGIA 30901
WWW.PRUETT-FORD.COM

KEY PLAN:

Date	Description

CCSD I.T./TRAINING DEPARTMENT

FOR
COLUMBIA COUNTY SCHOOL DISTRICT

4395 RIVERWATCH PARKWAY
EVANS, GA 30809

PLUMBING DETAILS, SCHEDULE & NOTES

PROJECT NO.	20-04C	DRAWING NO.	
DATE	10/26/2020	P3.1	
DRAWN BY			
PAPER	24"x36"		
ISSUE	CD		

